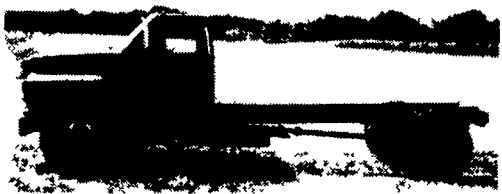
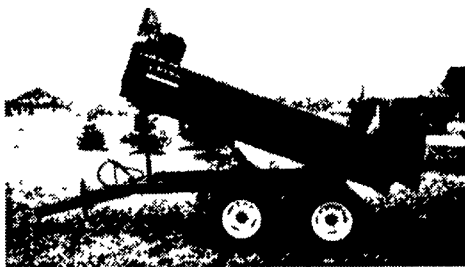


FARM DUMP TRAILERS

(Direct from the Manufacturer)



'88 Ford F-700
Cab & Chassis, 6.6L Diesel, 5+2 Trans.,
PTO and Pump, 22,800 GVW, Good
Condition **\$8,500 OBO**
610/383-7710

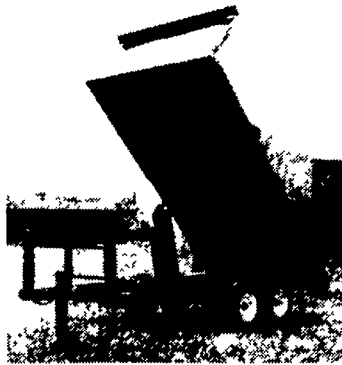


6-Ton Dump Trailer

- 10 ft. x 7 ft
- Floating Tandem Axle
- 3 ft. Front, 3 ft Tailgate & Grain Chute
- 16 in. Extendable Sides
- 10 ga. Floor & Sides
- 11Lx15 Flotation Tires
- 2-Way 4 in x 24 in Hydraulic Cylinder

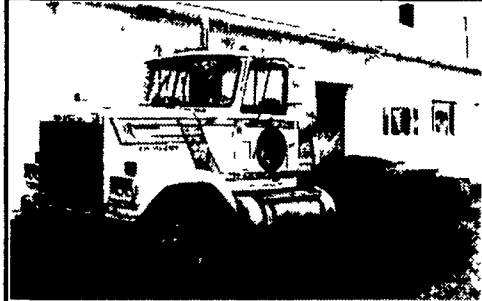
7-Ton Road Dump Trailer

- Fifth wheel or bumper type
- 16 ft x 8 ft. deck 3 ft. front rack and pockets side & back
- D.C. hydraulic pump & battery mounted in locking tool box
- 12 ton drop leg jack
- 10 ga floor
- 6x3x3/16 tube main frame
- Sealed beam lighting
- 7000 lbs. per axle rating
- Electric brakes on both axle
- 16" tires on white spoked rims
- \$6400 U.S. delivered in Northeast U.S.A.



BERKELMAN'S WELDING

RR 7, AYLMEER, ONTARIO, CANADA N5H 2R5
(519) 765-4230



GMC TRUCK
6V-92 Detroit, 8 Sp., Wet Line, Alum. Cab,
11R-22.5 Tires 80% (not caps).....**\$5,650**

CURRY SUPPLY CO.

Curryville, PA
1-800-345-2829



95 Dodge 3500 4x4 Dually Pickup Turbo Diesel, A/T, Laramie SLT, Loaded, Damage on Right Front \$ 11,900
Also Have 96 Dodge 2500 Extra Cab 4x4, Front Damage Turbo Diesel, A/T **\$8,500**

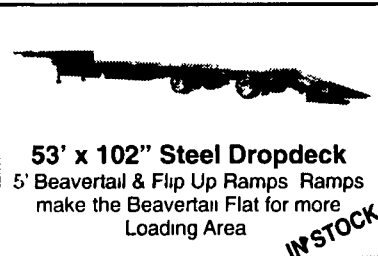
THOMPSON MOTORS

610/346-8588

Fax on Demand Inventory List

610/346-8890

BUY THE BEST - BUY A JET



53' x 102" Steel Dropdeck
5' Beavertail & Flip Up Ramps Ramps
make the Beavertail Flat for more
Loading Area

IN STOCK

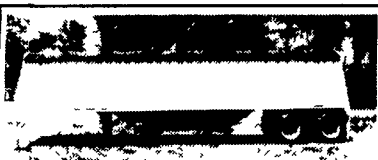
- Steel or Composite
- Tested For Heavy Loading and Severe Twisting w/110,000# in 8'
- 10'1" Air Ride Spread w/25,000# Axles Std.
- Strong Rear Bumper
- Sealed Wire Harness

- Sealed Lights
- Lightweight, More Profit
- 1 1/2" Alum. or Apitong Floor
- 5/16 Zinc Plated Floor Screws
- Engineered To Last
- Bulkheads, Tool Boxes Available



36' x 96" Steel Dropdeck
10' Top Deck, 26' Lower Deck with 5'
Beavertail & Ramps

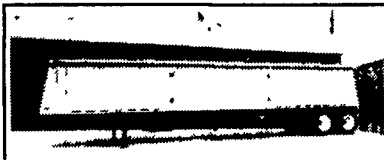
CALL US FOR YOUR SPECIALTY TRAILERS



34' Steel 1080 Bu. Capacity

- 22' Thru 42' Available
- Steel or Alum
- Long Lasting DuPont Imron Paint
- Full Width King Pin Plate for Severe Twisting and Heavy Loading
- New Axles 5-yr or 500,000 Mile Warranty

- Severely Tested w/Over 100,000#
- 40° Slopes All Four Sides-Better, Clean Out
- Engineered To Last
- Excellent Resale Value
- Jet Builds The Right Size Trailers to Fit The Laws



42' Aluminum 1340 Bu. Capacity
Extremely Lightweight

IN STOCK

MANY NEW PATENT PENDING FEATURES ONLY ON JET TRAILERS

"We're Here To Serve You"

SNOOK'S EQUIPMENT

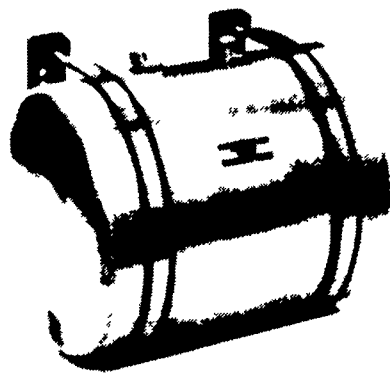
R.D.#3, Box 130, Mifflinburg, PA 17844

717-966-2736

Ask for Ernie or Dean

Attention: Truck Owners

We install wet lines on all types of trucks

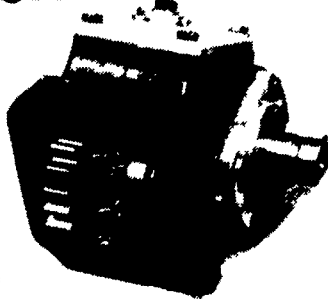


PERMCO



Gates

CHELSEA



Call Mark TODAY for a quote on your next installation.

Beiler Hydraulics

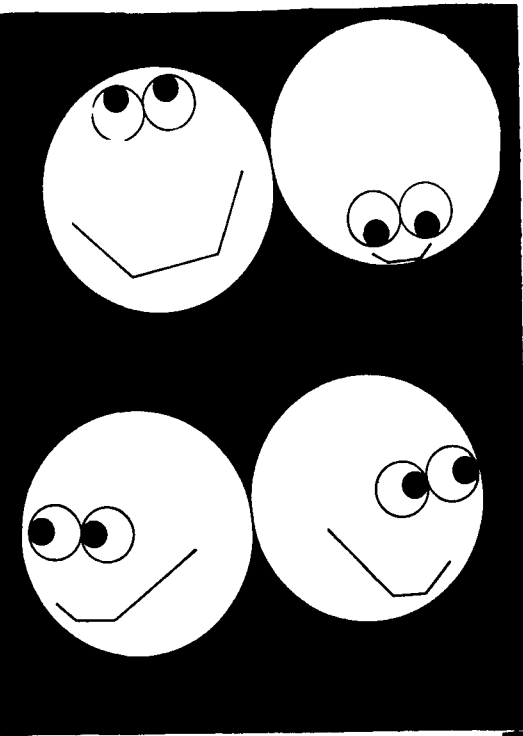
HYDRAULICS • PNEUMATICS • POWER TRANSMISSION
440 Concrete Ave., Leola, PA 17540 • 717-656-4878 • Fax 717-656-4682



(717)

949-6513

Birchwood
Auto & Truck Sales



DON'T LOOK ANY FURTHER!

YOU'LL FIND IT IN LANCASTER FARMING'S CLASSIFIEDS