

**Weekly Livestock Summary**  
Friday, Nov. 6, 1998  
Report Supplied By PDA

14 livestock auctions  
**CATTLE** 5165 Compared with 5106 head last week and 6100 head a year ago. Compared with last Friday's summary slaughter steers uneven, mostly steady to 75 lower, sl heifers steady to 150 higher, sl cows 100 to 250 lower, sl bulls steady to 100 lower. **SLAUGHTER STEERS** High Choice & Prime 2-4 61 50-65 25, few to 68 00, Choice 1-3 58 00-63 00, Select and Low Choice 2-3 55 00-61 00, Select 1-3 52 50-59 50, Standard 1-2 43 00-52 00. **HOLSTEINS** few High Choice and Prime 53 75-57 00, Choice 2-3 50 00-54 50, Select 1-2 44 00-51 00, few Standard 35 25-45 00. **HEIFERS** Choice 2-4 58 00-61 25, few to 63 00, Select 1-3 52 00-59 75, Standard 1-2 44 00-52 00, few to 37 00.  
**COWS** Breakers 75-80% lean 30 00-36 00, few to 28 00, Boners 80-85% lean 27 00-34 50, Lean 85-90% lean 21 00-29 50, few to 32 00. Shells down to 15 00. **BULLOCKS** few Choice 2-3 45 25-54 00, few Select 1-2 40 00-49 00.  
**BULLS** Yield Grade 1 1000-2400 lbs 38 00-48 00, few to 50 50, Yield Grade 2 900-2000 lbs 31 00-39 00. **FEEDER CATTLE STEERS** Medium and Large 1 300 565 lbs 60 00-79 00, 500-800 lbs 53 00-68 00, Medium and Large 2 300-600 lbs 50 00-60 00, few 550-850 lbs 44 00-55 00, **HEIFERS** Medium and Large 1 275-575 lbs 40 00-54 00, 550-900 lbs 34 00-50 00, **BULLS** Medium and Large 1 275-600 lbs 58 00-75 00, few to 79 00, few 550-800 lbs 49 00-63 00, few Medium and Large 2 275-500 lbs 44 00-60 00, few 500-800 lbs 35 00-55 00.  
**CALVES** 3643 Compared with 3330 head last week and 3464 head a year ago.  
**VEALERS** VEALERS steady to strong few Good 140-250 lbs 40 00-

65 00, Standard and Good 70-115 lbs 22 00-35 00, Utility 55-100 lbs 8 00-25 00. **FARM CALVES** Holstein bull calves steady to strong, Holstein heifers steady to 20 00 lower. No 1 Holstein bulls 90-125 lbs 65 00-102 00, No 2 85-125 lbs 40 00-80 00, few to 30 00. No 1 Holstein heifers 80-125 lbs 140 00-200 00, No 2 70-120 lbs 65 00-140 00, few to 40 00. Beef type bulls and heifers 75 115 lbs 30 00-75 00, few to 102 50.  
**HOGS** 1841 Compared with 2242 head last week and 3278 head a year ago. Barrows and gilts 4 00 to 7 00 lower most decline latter part of week, cows 2 00 to 3 00 lower. **BARROWS AND GILTS** 49-54% lean 220-265 lbs 17 00-24 00, few to 32 00, 45-50% lean 21-280 lbs 16 00-23 00, few to 32 00. **SOWS** US 1-3 300-700 lbs 12 00-20 50, few to 26 00. **BOARS** 5 50-7 00.  
**FEEDER PIGS** 392 Compared with 521 head last week and 362 head a year ago. Feeder pigs US 1-3 30-50 lbs 8 00-16 00, few to 3 50, 50-75 lbs 12 00-25 00 --- per head.  
**SHEEP** 1892 Compared with 1900 head last week and 1691 head a year ago. Slaughter lambs under 80 lbs steady to 10 00 higher, over 80 lbs mixed mostly steady to 5 00 lower. **SLAUGHTER LAMBS** few Choice 40-60 lbs 85 00-120 00, 55-80 lbs 75 00-100 00, 80-110 lbs 60 00-75 00, few to 94 00, 105-125 lbs 55 00-75 00, few to 50 00, few Good and Choice 80-110 lbs 48 00-65 00. **SLAUGHTER SHEEP** 19 00-45 00.  
**ONE GRADED FEEDER PIG SALE** 1488 Compared 2965 last week and 505 head a year ago. Feeder pigs steady to 8 00 lower. US 1-2 35-45 lbs 25 00-32 00, 50-60 lbs 22 00-26 00, 50-60 lbs 22 00-26 00, few Slaughter- 20-25 lbs 30 00-100 00, 25-70 lbs 20 00-28 00, few to 80 00 --- per hundred-weight

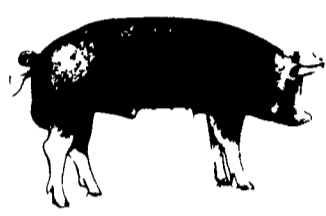
**Middleburg Livestock Auction**  
Middleburg, Pa.  
Nov. 10, 1998  
Report Supplied By PDA

**CATTLE** 499 [PDA] Compared with last week's sale slaughter steers steady, sl cows steady to 50 higher. **SLAUGHTER STEERS** High Choice and Prime 2-4 1195-1440 lbs 63 00-65 00 with one at 66 50, Choice 2-3 1150 1450 lbs 58 50 62 75, Yield Grade 4 1475-1575 lbs 54 00-57 75. Select 1-3 54 00-58 75, Standard 1-2 45 00-53 75.  
**HOLSTEIN STEERS** few High Choice and Prime 1250-1545 55 50-57 00. Choice 2-3 1050-1515 lbs 51 00-55 50, Select 1-2 45 00-51 75, Standard 1-2 38 00-42 75.  
**HEIFERS** High Choice and Prime 1120-1390 lbs 62 00-64 50 with one at 67 75, Choice 2-4 1050-1370 lbs 58 00-61 50, few 1500-1510 lbs 54 25-56 75, Select 1-3 54 25-58 50, Standard 1-2 42 00-53 25.  
**COWS** Breakers 75-80% lean 33 00-38 50, Boners 80-85% lean 31 00-35 25, low dressing 28 75-30 00, Lean 85-90% lean 23 00-30 50. Shells down to 15 00.  
**BULLOCKS** few Select 1-3 45 00-48 00.  
**BULLS** few Yield Grade 1 1170-2035 lbs 37 50-40 75, Yield Grade 2 1210-2145 lbs 28 50-37 00.  
**FEEDER CATTLE STEERS** Medium and Large 1 325-440 lbs 52 00-66 00, 500-600 lbs 61 50-69 00 with one at 73 00, Medium and Large 2 250-490 lbs 33 00-48 50, 700-1000 lbs 39 50-49 00, **HEIFERS** Medium and Large 1 325-495 lbs 49 00-59 50, 500-625 lbs 46 00-54 00, Medium 2 350 485 lbs 34 00-45 00, 650-800 lbs 30 00-37 00, **BULLS** Medium and Large 1 47 00 58 50, 500-675 lbs 47 50-59 00, Medium and Large 2 350-500 lbs

31 00-42 00, 625-990 lbs 33 50-45 00.  
**CALVES** 166 VEALERS, Standard and Good 80-125 lbs 21 00-30 00. Utility 50-75 lbs 10 00-19 00.  
**FARM CALVES** Holstein bulls steady. No 1 Holstein bulls 90-125 lbs 72 50-97 50, 80 90 lbs 67 00-82 50. No 2 90-115 lbs 40 00 70 00 80 90 lbs 30 00-35 00. No 1 Holstein heifers 95 130 lbs 130 00-195 00, No 2 75-115 lbs 80 00 125 00.  
**HOGS** 252 (11/09 & 10/98) Bulk of supply sold on Monday and reported by the auction. Barrows and gilts mostly steady.  
**BARROWS AND GILTS** 49 54% lean 230 270 lbs 27 00-29 00 45 50% lean 235-270 lbs 22 00 26 50, 40-45% 270 300 lbs 20 00-25 00.  
**SOWS** US 1 3 300 470 lbs 12 00-21 00, late sales 24 00-28 00, 515-540 lbs 14 00 19 00.  
**BOARS** 380 720 lbs 5 00-8 25 255-270 lbs 9 00-11 00.  
**FEEDER PIGS** 47 US 1-3 35 50 lbs 6 50-11 00 --- per head.  
**SHEEP** 8 **SLAUGHTER LAMBS** couple Choice 85 lbs 69 00 & 71 00, few 105-135 lbs 54 00-61 00.  
**SLAUGHTER SHEEP** one at 42 00.  
**GOATS** 15 Large Billies 58 00-74 00, couple Medium 39 00 & 47 00, couple Large Nannies 38 00 & 48 00, one Medium 36 00, Large Kids 31 00 35 00, Small 15 00-17 00 --- per head

**Belleville Livestock Auction**  
Belleville, Pa.  
Nov. 11, 1998  
Report Supplied By PDA

**CATTLE** 312 [SUPPLIED BY THE AUCTION]  
**SLAUGHTER STEERS** Choice 2 3 1250 1500 lbs 58 75 61 25 Select 1 3 52 25 56 00  
**HEIFERS** Choice 2 4 1100-1450 lbs 53 00-55 50, Standard 39 00 44 50  
**COWS** Breakers 75 80% lean 28 50 34 75 Boners 80 85% lean 23 75 28 25 Lean 85 90% 19 00 23 50 Shells down to 15 00  
**BULLS** Yield Grade 1 1200 1600 lbs 35 50 37 25  
**FEEDER CATTLE STEERS** 45 00 55 00, **HEIFERS** 33 00 40 00 **BULLS** 42 00-56 00  
**CALVES** 97 VEALERS Standard and Good 80 100 lbs 20 00 23 00, Utility 70-80 lbs 12 00 20 00 Utility 55 75 lbs 8 00 12 00  
**FARM CALVES** No 1 Holstein bulls 95-110 lbs 48 00-88 00, No 2 90 120 lbs 33 00 50 00 No 1 Holstein heifers 95-110 lbs 100 00-145 00  
**HOGS** 25 **BARROWS AND GILTS** 49-54% lean 230 250 lbs 23 50-26 00, few to 29 50  
**SOWS** Medium 300 500 lbs 12 00-18 00  
**BOARS** two at 10 00  
**FEEDER PIGS** 128 US 1-3 8 00-21 00 --- per head  
**SHEEP** 18 **SLAUGHTER LAMBS** Good and Choice 70 90 lbs 55 00 77 00  
**SLAUGHTER SHEEP** 19 00 32 00  
**GOATS** 25 Large Billies 80 00 96 00 Medium 55 00 77 00 Large Nannies 35 00 55 00 Large Kids 20 00 29 00 Small 4 00 12 00 per head

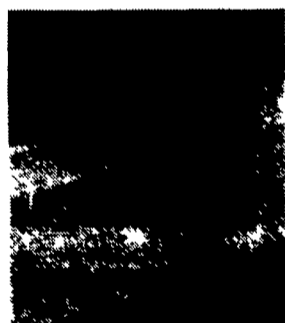


**FOR SALE GYPSUM**

\***GYPSUM** - (Calcium Sulfate) •Great calcium source without increasing the soil pH. Ideal for home gardens, pastures, and agricultural fields. Available Bagged or bulk  
 \***QUALITY BEDDING** - available in 3 cu. foot reusable containers.  
**\$5 Per Container, FREE Delivery Within 10 Miles of Leola.**  
 For pick-up or delivery...call  
**Agri-Marketing, Inc.**  
**Call (717) 627-2468**

**YOU CAN PRODUCE MORE MILK BY SUPPLYING MORE WATER**

Introducing the all new **Ritchie WaterMaster 72/144**



Easy access to valve & float by removing one cover panel

The best valve and float combination featuring a large throat for rapid fill. Fills at 20 gal / min at 50 psi. Ask about special low and high pressure valves

Optional electric heat available.



A rotocast polyethylene body features thick urethane insulation. Each 72" unit has 6 recessed heavy web anchors

**Plenty of water is important!**  
 • Large 3" drains are located at each end. The complete fountain will fill in 78 seconds at 50 PSI. A single 72" model will water 125 head of dairy stock or 250 head of beef cattle. These capacities double with the 144" model.  
 • Easy access to valve and float.  
 • Thick urethane insulation.  
 • Rotocast polyethylene body.  
 • Available in 72" and 144" models.  
 • Available in 72" and 144" models.



A single 72" model is just half of the 144" unit

**RYDER SUPPLY CO.**

539 Falling Spring Road  
 P.O. Box 219  
 Chambersburg, PA 17201-0219  
**Phone 717-263-9111**  
 rydersup@innernet.net



MEANS DEPENDABILITY

The best investment you'll ever make is a trouble free Ritchie fountain!

**LEBANON VALLEY ENTERPRISES, INC.**  
 Manufacturing • Powder Coating • Precast

- X Baked on High Gloss, high impact and acid resistant TGIC polyester powder coating
- X 20 Year rust thru guarantee
- X Adjustable head rail to accommodate different size animals
- X Wide lunge area for superior cow comfort
- X High Quality
- X Constructed from 12 ga 2 3/8" OD tubing
- X Affordable Prices
- X Optional lengths available upon request



**LOOP STALLS**

P.O. Box 187, Myerstown, PA 17067 • (717) 866-2030

Call us for your nearest Dealer!