

Conestoga Celebrates

(Continued from Page B2)

Eventually the society was offered the tobacco shed if they would move it. At that time, the Society had no land, but township supervisors suggested that the tobacco shed could be erected on park grounds. Because part of the park grounds is highly sloped and unsuitable for recreational activities, the land was the ideal setting for the tobacco shed.

With a building, the society became more aggressive in soliciting items. They were amazed at the historical pieces that area businesses and individuals began to donate.

Tom Grassel, local farmer and businessman, is attributed with being able to solicit many of the items.

"He knows everyone and has a way of convincing people of the value of preserving the past," Hoak said.

Grassel dismisses the importance of his involvement by saying that "Everyone worked together to accomplish the project."

But the low level of the museum is named Grassel Hall in honor of Grassel's tireless service in seeing the completion of the hall.

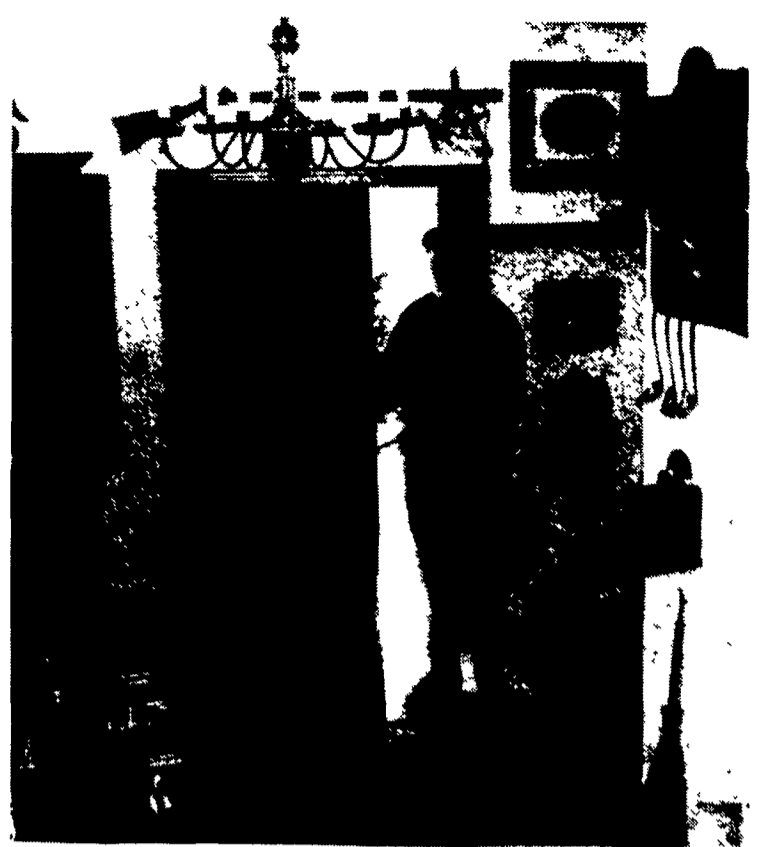
Grassel said that he grew up

hearing fascinating stories about the area and never forgot them. In the 1700s, the Conestoga River was the Route between Safe Harbor and Lancaster.

"The river was the source of transportation and people migrated to adjoining communities," Grassel said.

The river was also used to send supplies by raft. Nearby Safe Harbor became a booming town and hotels sprang up along the riverbanks. In 1876, the Columbia and Port Deposit Railroad brought more activity to the area.

In 1904 a ice jam wiped out the
(Turn to Page B5)



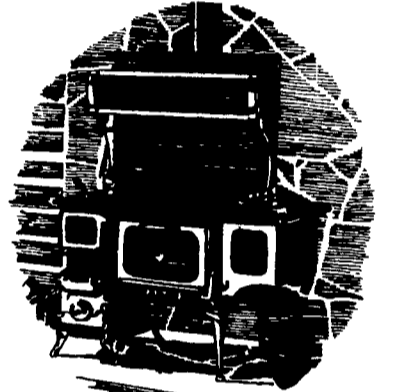
Kenneth Hoak, president of the Conestoga Area Historical Society, said the furnishings in the house have all been donated by local craftsmen.



The Fall Festival celebration concluded with a Civil War ball.

Wood Burning Cookstoves

Get ready for the turn of the century



Also available in gas or electric self-clean convection

Heartland Appliances Inc.

LEACOCK **Coleman** CENTER

89 Old Leacock Rd., Ronks, PA 17572
717-768-7174
Mon, Wed, Thurs 7 to 5,
Tues, Fri 7 to 8, Sat 7 to 12

Accurate. Productive.

Other Models Include...

453
600 lbs. rated capacity
15.7 hp diesel engine

553
950 lbs. rated capacity
22.5 hp diesel engine

751
1,250 lbs. rated capacity
38 hp diesel engine

753
1,350 lbs. rated capacity
43.5 hp diesel engine

763
1,500 lbs. rated capacity
46 hp diesel engine

863
1,900 lbs. rated capacity
73.5 hp diesel engine

873
2,400 lbs. rated capacity
73.5 hp turbo-charged diesel engine

963
3,000 lbs. rated capacity
105 hp turbo-charged diesel engine

Drill with plumb-line accuracy with a **Bobcat 773** skid-steer loader and Bobcat auger!



1,700 lb. Rated Operating Capacity **773** **46 hp** Diesel Engine
See One Of These Local Dealers Today!

Quarryville, PA
GRUMELLI'S FARM SERV.
717-786-7318

Lebanon, PA
EVERGREEN TRACTOR CO.
717-866-2585
1-800-441-4450

Harrisburg, PA
HIGHWAY EQUIPMENT
717-564-3031
Lititz, PA
717-625-2800

Muncy, PA
BEST LINE LEASING, INC.
717-546-8422
800-321-2378

Reading, PA
CSI ENTERPRISES INC.
610-926-4400
Bethlehem, PA
610-868-1481

Martinsburg, PA
BURCHFIELDS, INC.
814-793-2194

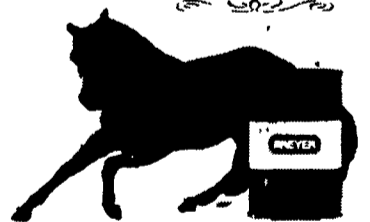
Chambersburg, PA
CLUGSTON AG & TURF INC
717-263-4103

Mifflinburg, PA
BS & B REPAIR
717-966-3756



Ask for a copy of the Discover the Bobcat Advantage video & 32 page buyers guide

Equestrian International



BREYER DAY

MODEL HORSE SHOW

SAT, NOV. 21st 11-5

Special Breyer Horse On Sale - Signed With Certificate
Awards & Ribbons For Different Classes
Free Drawing For Breyer Horse Give-Away Must Be Present To Win
Storewide Sale

10-15% OFF Everyday Low Prices



Call For Details And Entry Forms

EQUESTRIAN INTERNATIONAL

116 King Court, New Holland, PA 17557

717-354-4822 1-800-347-0033

E-Mail answers@equips.com