

35 TRUCKS & TRAILERS

Woodcrest Motors

SPECIALIZING IN TRUCKS & VANS

1200 North Reading Rd., (Rt. 272) Stevens, (Lancaster Co.) PA 17578
717-336-3130



89 FORD F450 SUPER DUTY ROLL BACK 7.3 Diesel, 5-Speed, A/C



97 FORD F150 EXT. CAB XLT, 4.2, AT, Most Options, 3-Door, 8,000 Miles



94 CHEV. KODIAK DUMP 10 ft. Dump Body, 3116 CAT, 6-spd., A/C, 25,700 GVW, 41,000 Miles



91 CHEV 3500 DUMP 350 V8, 4 Spd., 35,000 Miles



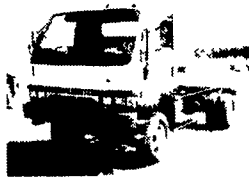
95 CHEV S-10 LS, 4x4 4.3 V6, 5-Speed, 50,000 Miles, Red



95 FORD F350 XLT 351 V-8, Auto, AC, Cruise, AM/FM Cassette, 66,000 Miles, Dual Tanks, PS

RIVER'S TRUCK CENTER

ROUTE 24 - CAPE HORN RD
RED LION, PA. 17356
(717) 244-4903
Now Providers of New Western Star Trucks, Slots Available



1998 MITSUBISHI FG 4X4 14' Cab and Chassis, Diesel, 5 Speed, 12,000 GVW
Call For Details



1991 FORD L9000 Single Axle, L10, 260 HP, 9 Speed, PS, Ac, Lease Maintained, Clean,
\$11,900



1995 ISUZU NPR 14' Van Body, 4 Cyl Turbo, Diesel, Automatic, 14,250 GVW, Clean
\$14,900



1990 Ford Super Duty 7.3L Diesel, 5 Speed, A/C, 12' Flatbed, 14,500 GVW
\$7,900

John E. Kreider

Specializing in Rebuildables
5348 Beagle Rd., E-town, PA 17022
717-361-9296



1995 Plymouth Grand Voyager SE 3.3L V6, AT, Loaded 67,641 mi Damage to left front \$3,900



1992 Dodge B-150 Van Short Wheelbase 3.9L V6, AT, AC, Most options Runs & drives excellent! Ready to go \$6,300



1994 Ford Aerostar Ext. 3.0L V6, AT, AC, PW, PL, Tilt, Cruise, Cass 69,319 mi Left rear damaged and has right side swiped Most parts available Runs & drives \$2,000.



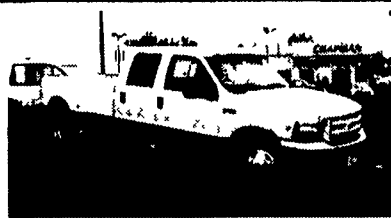
1992 Chevy Astro EXT 4.3 V6, AT, AC, PW, PL, Tilt, Cruise, Cass 121,770 mi. Right front damaged Parts available Runs & drives \$2,500



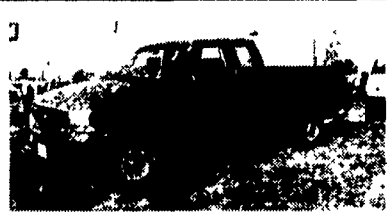
1990 Olds Cutlassiera 3.3L V6, AT, AC Loaded, 33,601 mi. Front swayed \$950



1992 Dodge Grand Caravan SE 3.3L V6, AT, AC, Loaded Theft recovery Nothing wrong with this one Factory black with gray interior Runs and drives great \$6,000.



1999 Ford F350 4x2 Crew Cab Dually, Loaded, Diesel, Automatic Eclipse Conversion



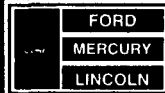
1999 Ford F250 Super Cab 4x4 XLT, V8, AT, Ready to go.



TRUCKS & MORE TRUCKS

All Ready For Immediate Delivery At Prices That will Make You Smile!

Unless the Chapman Emblem is on Your Car or Truck You Probably Paid Too Much!



CHAPMAN LEBANON

20th & CUMBERLAND STS. - RT 422 WEST

9-9 DAILY, 9-5 SATURDAY • CHAPMAN HOTLINE (717) 272-7671 OR 533-5293



PART DEPT OPEN DAILY 9-5 *A/C 9-12 *T 273-1108

ARMY TRUCK PARTS

CHAMBERSBURG, PA

COMPLETE TRUCK INVENTORY
COMPLETE PARTS INVENTORY
THE NATION'S LARGEST ARMY TRUCK AND PARTS DEALER



6x6 TRUCKS
2 1/2 & 5 TON
UNITS AVAILABLE
ENGINES
TRANSMISSIONS
TRANSFER CASES
DRIVE TRAIN
CAB KITS

Army truck parts catalogs available

MEMPHIS EQUIPMENT

821 Lincoln Way West
P.O. Box M
Chambersburg, PA 17201

717/263-4194 FAX 717/263-4555



GLENN ALLEMAN, GEN. MGR.
MARK SIPES, PARTS MGR.



"CLEANEST TRUCKS AROUND"



1995 Int. 4700 C&C, DT 466, 7 Spd Trans, 28,960 GVW, Hyd Brakes, 236 WB, 168 C to A, Custom Cab \$22,500



1992 Int. 4900 C&C, DT 466, 195 HP, 7 Spd Trans, 33,000 GVW, Air Brakes, PS, 236" WB, 168 C to A \$19,500



1986 INT. S1600 C&C 7.3L, 5 Sp Trans, Hyd Brakes, Cto A 138, WB 208. \$9,500



(2) 1994 Ford LN8000 C&C, 8.3 Cummins, 210 HP, 6 Sp Trans, Air Brakes PS, AC, 222" WB, 156" C to A, 32,700 GVW \$25,500/EA



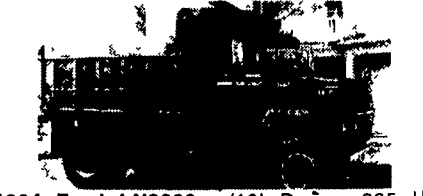
1988 Ford LN8000 C&C, 7.8L Diesel, 240 HP, 6 Spd Trans, Custom Cab, Air Brakes, PS, 33,000 GVW, WB 204", C to A 140" \$15,500



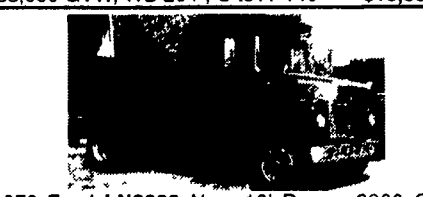
1992 Ford LN8000 C&C, 7.8L Diesel, 210 HP, 6 Spd Trans, Custom Cab, PS, Air Brakes, A/C, 33,000 GVW, WB 246", C to A 180" \$20,500



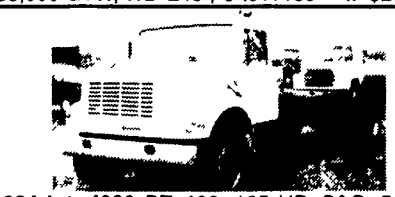
1984 Ford LN8000 C&C 3208T, 225 HP, 5 Sp, Trans, 2 Sp Rear, Air Brakes, PS, Custom Cab, 204" WB, 140" C to A 35,000 GVW... \$14,500



1994 Ford LN8000 w/10' Dump, 225 HP Cummins, 5 Spd Trans, 2 Sp. Rear, PS, AB, A/C, Pintle Hook, 33,000 GVW, 42,000 Miles, Like New, Set Up For Hauling Black Top.. \$42,500



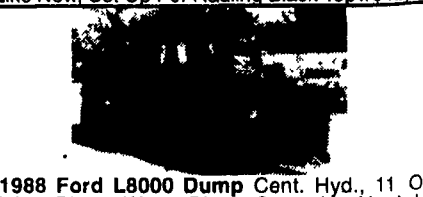
1979 Ford LN8000 New 10' Dump, 3208 Cat 210, 5 Spd Trans, 2 Spd Rear, 35,000 GVW, Air Brakes, PS, Custom Cab \$13,500



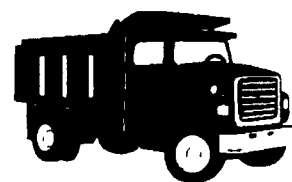
1994 Int. 4900 DT 466, 195 HP, C&C, 5 Spd Trans, Hyd Brakes, 25,500 GVW, 218 WB 150 C to A, PS, AC \$25,500



1995 Ford LNT 9000 C&C 3306 Cat, 300 HP, 9 Sp. Trans., PS, Air Brakes, A/C, GVW 52,000 WB. 274" C to A 210" \$42,500



1988 Ford L8000 Dump Cent. Hyd., 11 One Way Plow, Wing Plow, Spreader Hook-Up, 79,000 Miles, 7.8L-240 Hp, 10 Sp. Trans. Diff. Lock, PS, Air Brakes, Needs Minor TLC. \$12,500



AL HAMILTON MANAGEMENT COMPANY

Used Medium & Heavy Duty Trucks

P.O. Box 157 • 55 Doe Run Road • Manheim, PA 17545

Phone: 717-665-7145 • Fax 717-665-2137