

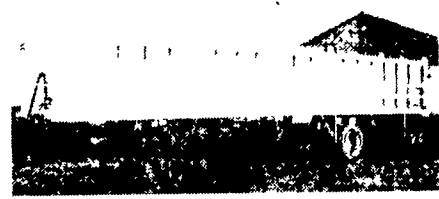
**Chassis Specifications**  
 1985 International - Model F2554 conventional tandem chassis  
 246 wheelbase 52,200 lbs G V W R  
 International DT466C 210 Horse Power engine  
 Eaton Fuller RT6613 13 speed transmission  
 Current mileage 349,000

**Tank Specification**  
 1983 Carmay 4,200 gallon insulated stainless steel tank

(215) 855-9074



**1995 Ford 350 Centurion Dually,**  
 7.3 Power Stroke, Automatic Transmission  
 Every available option included. Excellent condition. 153,000 thruway miles. All service records from dealer available. Price \$21,900.  
 315-493-1051

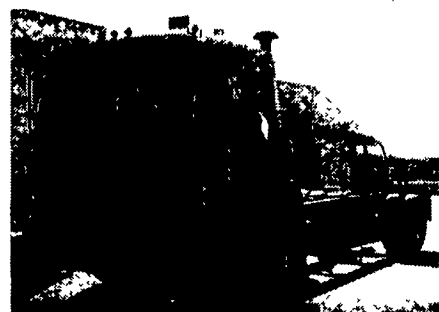


**92 Ravens Frameless Dump**

40'x96"x64"; 2-Way Gate; 11 Rx24.5 On 8 Aluminium Wheels; Air Ride Spread Axles; Front Axle Lift, All New Tires, Brakes, Inspection. **717-354-3199**



2150 S. Queen Street  
 York, Pennsylvania 17402  
 Telephone: (717) 741-4681



FE42 1995 Volvo Chassis, 6 Speed, 230 HP, 210" WB, 175,000 Miles, Clean



U685ST MACK 1982 300 HP, 6 Speed, Tandem - Camel Back, A/C, PS, Clean



1990 Ford E350 w/14' Cube, 51,000 Mi., V-8 Auto, A/C, PS, PB, AM/FM Stereo



1999 Isuzu NPR - Phoenix Blue Edition, 14,500# GVWR, 4 Cyl, Turbo Diesel w/Auto, 175 HP, A/C, AM/FM Cassette, Air Shield, Chrome Wheel Covers, 14' Morgan Van Body

**USED TRUCKS**



**97 Ford F-350, XL 4x4**  
 7.3 Powerstroke Diesel, 5 Speed AC AM FM Sliding Rear Window Dual Tanks, 9,000 GVW, 3.55 Rear Dk Green, 32,000 Mi.  
**\$24,700**



**96 GMC 2500 SLE**  
 4x2 454 Vortec Eng AT AC p wds p dls cruise tilt AM/FM Cass CD Player p sat 8600 GVW - 73 limited slip rear 3600 miles black like new  
**\$20,500**



**94 Chevy 2500 Cheyenne 4x4**  
 350 Fuel Injected 5 Sp A/C AM/FM Sliding Rear Window 8600 GVW 173 Ltd Slip Rear Maroon 43,000 Mi.  
**\$15,900**



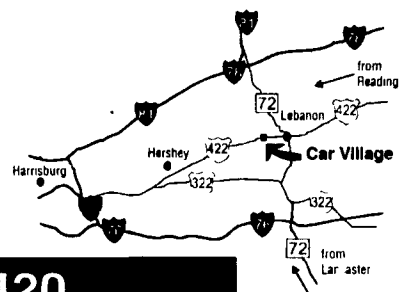
**96 Ford F-250 Super Cab,**  
 XL 4x4 35111 Eng 5 Speed AC AM/FM Cass Dual Tins 8800 GVW 410 Rear PA One Owner 53,000 Miles Dk Green  
**\$18,900**

**MARTIN'S AUTO SALES**  
 1025 W. Main St. New Holland, PA 17557  
**(717) 656-6621**

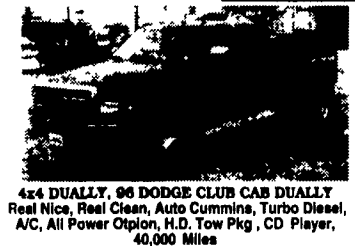
**Business Hours:**  
 Mon.-Fri. 9 to 9;  
 Sat. 9-4

RTE. 422 WEST  
 LEBANON, PA  
 (Across From  
 Lebanon Valley Mall)

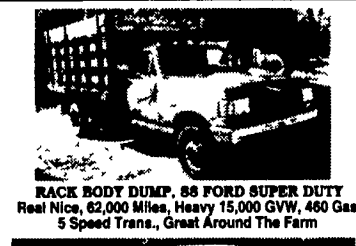
**CAR VILLAGE**  
**HEAVY DUTY TRUCKS**



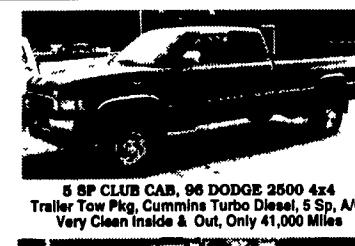
**PHONE 717-274-2000 Toll Free 1-800-650-1420**



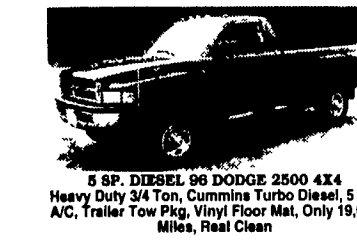
**4x4 DUALY, 96 DODGE CLUB CAB DUALY**  
 Real Nice, Real Clean, Auto Cummins, Turbo Diesel, A/C, All Power Opton, H.D. Tow Pkg, CD Player, 40,000 Miles



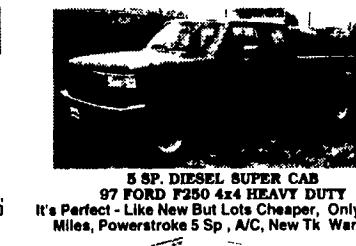
**RACK BODY DUMP, 88 FORD SUPER DUTY**  
 Real Nice, 62,000 Miles, Heavy 15,000 GVW, 460 Gas, 5 Speed Trans., Great Around The Farm



**5 SP CLUB CAB, 96 DODGE 2500 4x4**  
 Trailer Tow Pkg, Cummins Turbo Diesel, 5 Sp, A/C, Very Clean Inside & Out, Only 41,000 Miles



**5 SP, DIESEL 96 DODGE 2500 4X4**  
 Heavy Duty 3/4 Ton, Cummins Turbo Diesel, 5 Sp, A/C, Trailer Tow Pkg, Vinyl Floor Mat, Only 19,000 Miles, Real Clean



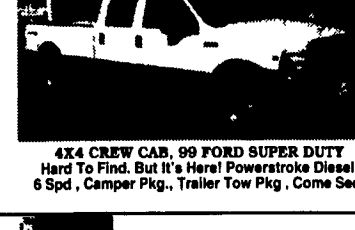
**5 SP, DIESEL SUPER CAB 97 FORD F250 4x4 HEAVY DUTY**  
 It's Perfect - Like New But Lots Cheaper, Only 15,000 Miles, Powerstroke 5 Sp, A/C, New Tk Warranty



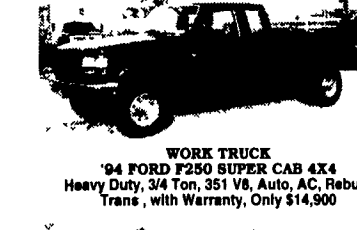
**TOW WITH STYLE 97 FORD F350 CREW CAB DUALY**  
 Very Nice, 24,000 Miles, Powerstroke Diesel, 5 Sp, A/C, 4:10 Gears, Aluminum Wheels, Big Mirrors



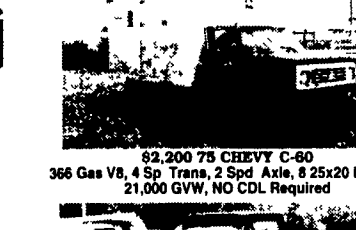
**87 FORD F250 4X4**  
 Diesel Power, 4Sp Trans, Gooseneck & Class 3 Hitches, Vinyl Floor, Great Farm Truck \$7,900



**4X4 CREW CAB, 99 FORD SUPER DUTY**  
 Hard To Find, But It's Here! Powerstroke Diesel, 6 Spd, Camper Pkg., Trailer Tow Pkg, Come See!



**WORK TRUCK 94 FORD F250 SUPER CAB 4X4**  
 Heavy Duty, 3/4 Ton, 351 V8, Auto, A/C, Rebuilt Trans, with Warranty, Only \$14,900



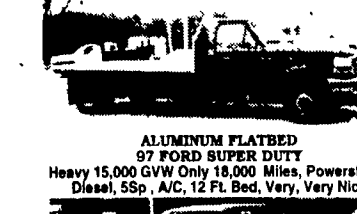
**\$2,200 75 CHEVY C-60**  
 366 Gas V8, 4 Sp Trans, 2 Spd Axle, 8 25x20 Rubber, 21,000 GVW, NO CDL Required



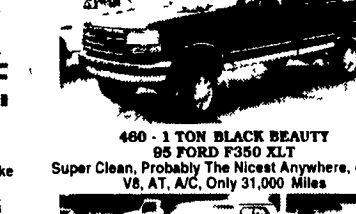
**TOW MACHINE 97 FORD F350 SUPERCAB DUALY**  
 This is One Strong Tk, Powerstroke Diesel, 5 Sp, 4:10 Gears, A/C, Big Mirrors, Gooseneck & Class 3 Hitch, Only 22,000 Miles



**PULLING POWER 5 SP. DODGE CLUB CAB DUALY 4X4**  
 We Have 5 Extra Clean, Low Miles, Very Strong, Very Nice  
 Call For Details



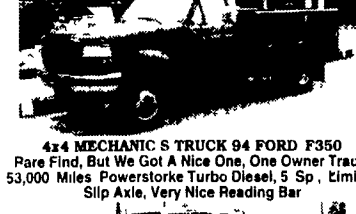
**ALUMINUM FLATBED 97 FORD SUPER DUTY**  
 Heavy 15,000 GVW Only 18,000 Miles, Powerstroke Diesel, 5Sp, A/C, 12 Ft. Bed, Very, Very Nice



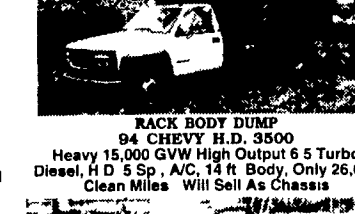
**460 - 1 TON BLACK BEAUTY 95 FORD F350 XLT**  
 Super Clean, Probably The Nicest Anywhere, 460 I V8, AT, A/C, Only 31,000 Miles



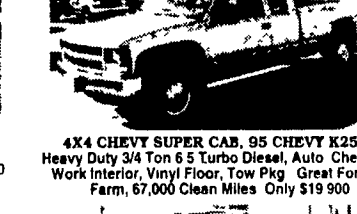
**4x4 SUPER CAB 99 FORD F350 SUPER DUTY**  
 XLT, Powerstroke Diesel, AT, A/C, Power Everything 4 Door Opening, CD Player



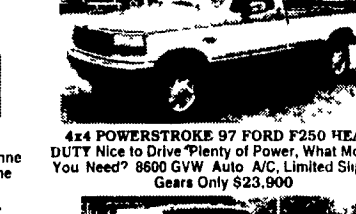
**4x4 MECHANIC'S TRUCK 94 FORD F350**  
 Rare Find, But We Got A Nice One, One Owner Trade, 53,000 Miles, Powerstroke Turbo Diesel, 5 Sp, Limited Slip Axle, Very Nice Reading Bar



**RACK BODY DUMP 94 CHEVY H.D. 3500**  
 Heavy 15,000 GVW High Output 6.5 Turbo Diesel, H D 5 Sp, A/C, 14 ft Body, Only 26,000 Clean Miles Will Sell As Chassis



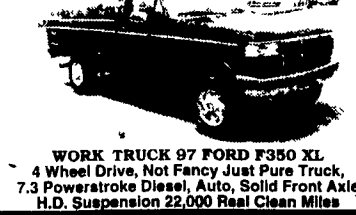
**4X4 CHEVY SUPER CAB, 95 CHEVY K2500**  
 Heavy Duty 3/4 Ton 6.5 Turbo Diesel, Auto Cheyenne Work Interior, Vinyl Floor, Tow Pkg Great For The Farm, 67,000 Clean Miles Only \$19,900



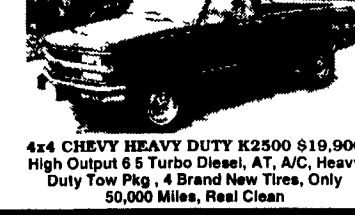
**4x4 POWERSTROKE 97 FORD F250 HEAVY DUTY**  
 Nice to Drive "Plenty of Power, What More Do You Need?" 8600 GVW Auto A/C, Limited Slip 4:10 Gears Only \$23,900



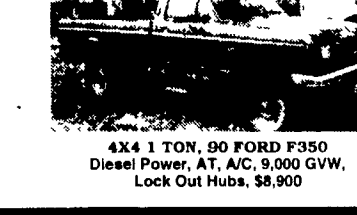
**NOTHING FANCY - JUST TRUCK 96 FORD F250 4X4**  
 Heavy Duty 3/4 Ton Powerstroke Turbo Diesel, Auto, A/C, Vinyl Seat & Floor, Only 36,000 Miles New Truck Warranty



**WORK TRUCK 97 FORD F350 XL**  
 4 Wheel Drive, Not Fancy Just Pure Truck, 7.3 Powerstroke Diesel, Auto, Solid Front Axle H.D. Suspension 22,000 Real Clean Miles



**4x4 CHEVY HEAVY DUTY K2500 \$19,900**  
 High Output 6.5 Turbo Diesel, AT, A/C, Heavy Duty Tow Pkg, 4 Brand New Tires, Only 50,000 Miles, Real Clean



**4X4 1 TON, 90 FORD F350**  
 Diesel Power, AT, A/C, 9,000 GVW, Lock Out Hubs, \$8,900



**95 DODGE 2500 4X4 \$21,900**  
 Very Nice, Very Clean, Only 55,000 Miles, Cummins Turbo Diesel, AT, A/C, Chrome Wheels, A Real Good Looker