

**12' Reefer Body,**  
under body refrigeration unit,  
Uses 220 electric. Has damage.



**1981 Volkswagon Rabbit**  
Diesel, 4 Spd., 177,354 Mi.,  
2 Door, Needs Driver-Side Fender



**3- 40' Steel Flatbed Trailers**  
with sliding tandems, all in good condition



**Michigan Loader Model L30**  
Quick Coupler, Comes With 1 Yard  
Bucket and 60" Forks, Runs Excellent



**Aluminum Tanker/Trailers**  
7500 gal. and up



**3000 Sludge Tank**

**4 I-Beams**  
49' Long, 28" High w/12-1/2" Web



**W7 Case Loader,**  
15 5x25 tires, runs good serial #9900486



**1947 Autocar C-50 Tractor**  
42,000 miles, 477 gas eng., 5 spd,  
air brakes, runs great, kept inside  
since new

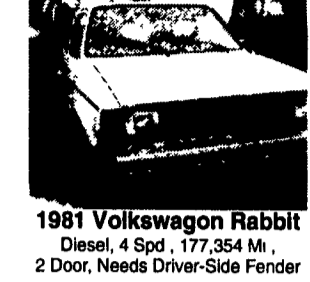
**Forklifts For Sale**



**Hyster 2,000 lb capacity, 3 wheeler, propane**  
gas, solid tires, 92" Fork height, 48" forks  
**Towmotor 4,000 lb capacity, 2 stage mast,**  
108" Fork height, 42" forks solid tires  
**Towmotor 2,000 lb capacity, 106" Fork**  
height, 42" forks, solid tires



**1988 Volvo/White**  
3306 Cat engine, 740 Allison, 44'  
Rockwell rears, 11x22.5 tires, Galton  
trash body model FLSC35



**1993 Toyota Pickup**  
4 Cyl., 5 Spd. Trans., AM-FM Radio,  
A/C, Excellent Condition, High Mileage



**1500 gallon Sludge Tank**



**New flatbeds available**  
Sizes currently available are 12', 14', 20',  
22' and 24'. Racks are also available



**19' NEW Lumber Body**  
w/Ratchet Tie-Downs//Dumping Hoist



**Clark Crane 14 Ton Capacity,**  
4-53 Detroit, 60' boom, 14.00x24 tires,  
runs good serial #720



**1981 Mack R-600 Dump**  
250 Mack Engine, 6 spd. trans., 38,000  
lb rears, P/S, 14' alum body,  
11x24 5 tires



**1948 International**  
KB Chassis, 50,000 miles, 269 gas  
engine, 2 spd trans, hydraulic brakes,  
excellent condition, been in storage over  
30 years

**ALUM-LINE, INC.**

The Leader In Heavy Duty Construction

"More Trailer - Less Money"



All-Aluminum Livestock  
Trailers, Bumpers &  
Goosenecks • 8' to 39'  
Lengths • Double Deck  
Package Available

"The Finest Truck Bed You'll Own"

All-Aluminum Stake  
Body Beds • 6' To 24'  
Lengths • Many  
Standard & Optional  
Features • All Types of  
Tool Boxes

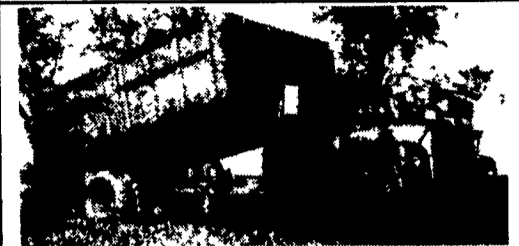


Also from Alum - Line, a complete line of  
aluminum pickup boxes and truck tool  
boxes

**Wolfe Auction**  
9801 Hansonville Rd.  
Frederick, MD 21702  
800-443-9580



**1983 International Truck, diesel S1700 series, 15' steel**  
bed w/PTO and power liftgate, 27,000 G V W **\$5,450**



**1976 International Loadstar, 16' dumpbox, V8, 5 spd,**  
2 spd rear, 26,500 G.V.W. **\$2,950**

**Call 717-865-3488**

After 5 p.m.



**1993 IHC 4900, DT466, 210 HP, 6 Speed,**  
11,000 FA, 22 900 RA, 32,900  
GVW, 178,855 Miles, Air Brakes, A/C,  
Yellow, 24' Util Master w/Lift Gate & Side  
Door. **\$21,900**



**1988 FORD F600, 370 Gas, 5/2 Trans,**  
21,200 GVW, 219,000 Miles, 18' Morgan  
Body, 3 Sets "E" Track & Lift Gate **\$8,900**



**1994 FORD E350, 7 3 Diesel, AT, 14 Ft**  
Van Body, 102,000 Miles, Clean Unit **\$13,400**



**1992 MITSUBISHI FH10, 6 Cyl, 155 HP, 5-**  
Speed, 17,196 GVW, 243, 263 Miles, PS,  
18' Morgan Van Body (w/10'6" Roll-up Side  
Door & Lift Gate) **\$15,900**



**1991 IHC 4900 466-185 HP, 5 Speed,**  
32,700 GVW, 236" WB, A/C, PS, 22  
Morgan Body With Lift Gate **\$18,900**



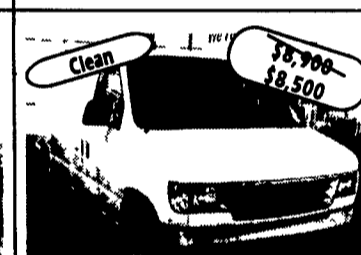
**1995 Ford F-Super Duty 7 3 Diesel, AT,**  
A/C, 15,000 GVW, 108,039 Miles, Myers  
Plow, 12' Flat Bed Dump Style **\$16,500**



**1992 FORD CF8000, 22' Wood Flat Bed**  
w/Lift Gate, 7 8 190 HP, 6 Speed, 33,000  
GVW 81,408 Miles, White Fresh **\$16,900**



**1994 Isuzu NPR, 14,000 GVW, AT-OD,**  
A/C, Cab & Chassis 138,000 miles **\$11,000**



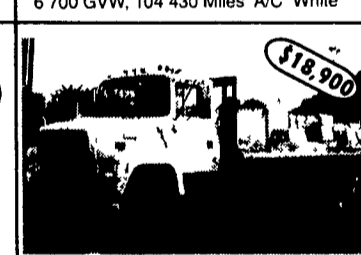
**1994 FORD E150 VAN, 4 9 EFI AT-OD**  
6 700 GVW, 104 430 Miles A/C White **\$8,900-\$8,500**



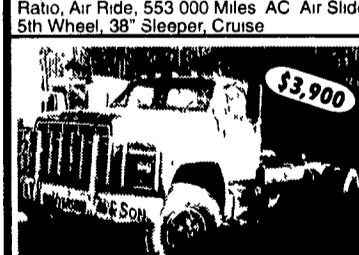
**1994 Volvo WIA 64T N14, 430 HP Eng.,**  
Super 10 Trans, FA 12,000, RA 40,000 3 9  
Ratio, Air Ride, 553 000 Miles AC Air Slide  
5th Wheel, 38" Sleeper, Cruise **\$24,900**



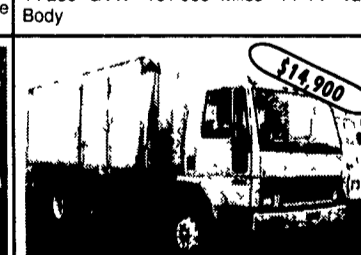
**1993 ISUZU NPR, 4 Cyl Diesel 4 Cyl OD**  
14 250 GVW 101 000 Miles 14 Ft Van  
Body **\$14,500-\$13,500**



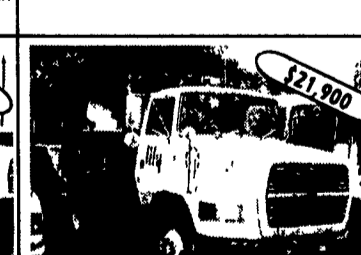
**1991 Ford LN8000, 7 8 210HP Engine FA**  
10 000, RA 23 000 33 000 GVW, 212,400  
Miles 22 Flat Bed w/wood floor **\$18,900**



**1988 Ford F800 C/C, 429 V8 Gas, 5/2**  
Trans, 33,000 GVW, WB 214, CA 144, C/5  
Wheels, PS, Gray, Air Dryer **\$3,900**



**(5) 1992 FORD CF8000, 7 8 190 HP, 6-**  
Speed, 33,000 GVW, 177" WB, PS, New  
Paint White/Choice Vertical EXH, 18  
Morgan Body w/Side Door  
Unpainted **\$14,900**  
Cab & Chassis Only **\$11,200**



**1991 FORD LA9000, L10 260 HP**  
9-Speed Trans, 34,700 GVW, 645,307  
Miles, A/C, PS, Fresh White Paint, New  
Galton 10' Dump w/Coal Door & Pull Plate **\$21,900**

**Wm. Cohen & Sons**  
**Thorndale, PA**

(610) 269-1298 Call between 7 am - 4:30 pm

**Hundreds of Used Truck Tires For Sale**  
Sizes from 16" to 24"

**1979 Crane Carrier Cement Mixer,**  
10 Yd. Rex Mixer, 230 Cummins,  
8 Spd. Trans., 44,000 Lb. Rears  
Asking **\$8,500**

**Used Overhead Door For Sale**  
18'H x 14'W  
Asking **\$550**

**Aluminum Loading Ramps**  
9' & 10', also some other sizes available

**Used Van Trailer — For Sale or Rent**

**Yale Electric Hoists**  
1/2 ton cap., 440 volt,  
single and three phase.  
Asking **\$350/ea.**

**Pedestal Grinder**  
Baldor 2 Hp., 3 phase, 220 amps

**Toledo Scale**  
1,000 lb. Capacity

**Oil Heaters**  
250,000 BTU's

**KEYSTONE**  
**TRUCK SALES**



470 Penhar Rd., I-83 at 322 East,  
P.O. Box 4194, Harrisburg, PA 17111

Sales Dept. Hours:

Monday-Friday 8 am to 5:30 pm



(717) 564-6661 or (800) 669-6235