

### Estimated Daily Livestock Slaughter

Under Federal Inspection  
November 4, 1998

	CATTLE	CALVES	HOGS	SHEEP
WEDNESDAY 11/4/98 (EST)	130,000	6,000	382,000	14,000
WEEK AGO (EST)	122,000	7,000	374,000	15,000
YEAR AGO (ACT)	133,000	6,000	371,000	17,000
WEEK TO DATE (EST)	393,000	20,000	1,139,000	40,000
SAME PD LT WK (EST)	381,000	20,000	1,137,000	45,000
SAME PD LT YR (EST)	391,000	19,000	1,088,000	47,000

### Central Carlot Pork Report

Des Moines, IA  
Wed Nov 4, 1998

USDA Market News  
USDA NATIONAL CARLOT PORK  
REPORT Equated to FOB Omaha Basis as  
3:00 P.M.

Compared to Tuesday's Close: Fresh bone-in 13-19# loins mostly 3.00 lower; butts, 1/4" trim, weak to mostly 1.00 lower; sknd hams 17-20 lbs. steady to firm, 20-27 lbs. steady to 2.00 lower; scls. bellies 1.00 to 2.50 higher; lean trimmings weak to 1.50 lower. Trading moderate to active, with light demand and moderate to heavy offerings. Loads PORK CUTS : 139.25 Loads TRIM/PROCESS PORK : 68.5 USDA ESTIMATED PORK CARCASS CUTOFF Based on FOB Omaha carlot pork prices and industry yields.

Calculations for a 185 lb Pork Carcass 51-52% lean, 0.80"-0.99" backfat at last rib Total Today's Primal Cutout Values Date Loads Carcass Loin Butt Pic Rib Ham Belly 11/04 207.8 42.58 61.89 36.64 19.96 88.87 39.80 39.15 Change : -1.51 -2.51 -0.99 -0.88 unc -3.86 1.89 11/03 107.3 44.09 64.40 37.63 20.83 88.87 43.66 37.26 11/02 70.8 44.79 65.47 39.06 20.87 88.87 43.83 38.76 10/30 58.3 46.10 66.69 39.78 20.40 88.87 46.30 40.95 10/29 92.5 46.48 68.05 39.25 19.74 88.87 45.75 42.78 Current Five Day Simple Average - 44.81 65.30 38.47 20.36 88.87 43.87 39.78

NOTE: Value may change without adequate test. A detailed description of the cutout is available upon request.

FRESH PORK CUTS PRICE RANGE WGHTD AVG. LOINS, BONE-IN Primal Cutout Value = 61.89 \*\*ABP Regular 14-18# = 46.00 - 60.00 56.50 Lds Price Range Wghtd Avg. 1/4" Trim 13-19# 22.0 79.00 - 85.00 82.84 1/8" Trim/less 13-19# 5.0 77.00 - 87.00 80.60 1/4" Bladeless 1/4" Trim 19-23# 7.0 72.00 - 79.00 74.86 combos 23/Up# 1.0 39.00 39.00 LOINS,CNTRCUT,10-11 RIB,1/4"TRM Tender-in FLO 8-13# 5.0 117.00 117.00 Tender-out FLO 8-13# unq BNLS Strap-on 5-9# 0.5 144.00 144.00 BNLS Strap-off 5-9# 3.5 155.00 - 166.00 157.14 WHLE BNLS LOINS 7-11# 0.5 112.00 112.00 BNLS SIRLOIN .75-1# 1.25 90.00 90.00 BONE-IN SIR 2.5-3.5# BLADE ENDS 2-4# TENDERLOIN 1.25/DN# 222.00 222.00 A LOIN BACKRIB (BOXED) FRSH/FRZN 1.5/DN# " 1.75/DN# " 1.75-2.00# unq " 2.00/UP# LOIN BACKRIB (COMBOS) 1.75/DN# PICNIC Primal Cutout Value = 19.96 \*\*ABP Untrmd Picnic = 15.00 15.00 Lds Price Range Wghtd Avg. Smkr Trm, RS, combo 1.0 27.50 27.50 Smkr Trm, SS, boxed 1.5 38.00 - 42.00 40.67 PICNIC CUSHION MEAT Combo 92% Fresh 80.00 80.00 B Boxed 92% Frozen 2.0 70.00 70.00 BOSTON BUTT Primal Cutout Value = 36.64 \*\*ABP Regular 4-8# = 21.00 - 31.00 25.18 Lds Price Range Wghtd Avg. 1/4" Trim 4-9# 16.0 46.00 - 52.00 47.84 1/8" Trim 4-9# 52.00 - 53.00 52.17 E 1/4" Trim

Neck-off 59.00 59.00 A 1/8" Trim Neck-off 4.0 55.00 - 57.00 55.50 BNLS, Cellar Trim combo's 9/UP# SPARERIB Primal Cutout Value = 88.87 \*\*ABP 1.5-3.5# = 76.00 76.00 C Lds Price Range Wghtd Avg. 3 BAG/3 PCVAC 3.8/DN# 99.00 99.00 C 2 BAG/3 PCVAC 3.8-5.8# unq COMBOS 3.8/DN# 83.00 83.00 E COMBOS 3.8-5.8# SKINNED HAM Primal Cutout Value = 39.80 \*\*ABP Untrm Sel 17-20# = 64.00 - 68.00 66.77 \*\*ABP Untrm Sel 20-26# = 30.00 - 50.00 36.29 Lds Price Range Wghtd Avg. BONE-IN, TRIMMED 17-20# Trim Spec 1 13.0 68.00 - 72.00 70.46 20-23# Trim Spec 1 6.0 48.00 - 54.00 49.33 23-27# Trim Spec 1 3.0 37.00 37.00 17-20# Trim Spec 2 68.50 68.50 B 20-27# Trim Spec 2 49.00 49.00 A 27#up Trim Spec 2 BONELESS MUSCLES 94-96% 3 Muscle Group 4 Muscle Group 13.0 101.00 - 104.00 102.15 5 Muscle Group 7.0 96.50 96.50 Inside Outside Knuckle Lite Butt Inner Shank HAM TRIMMINGS (CHEM LEAN) Combo 72% Fresh 20.00 20.00 B Boxed 72% Frozen Combo 90% Fresh Boxed 90% Frozen Outer Shank Frozen BELLY, SEEDLESS Primal Cutout Value = 39.15 \*\*ABP Untrmd 12-14# = 35.00 - 40.00 38.57 \*\*ABP Untrmd 14-16# = 34.00 - 40.00 36.40 \*\*ABP Untrmd 16-18# = 34.00 34.00 Lds Price Range Wghtd Avg. SKIN-ON, TRIMMED Fresh 10-12# 23.75 23.75 A Fresh 12-14# 7.0 38.00 - 44.00 42.29 Fresh 14-16# 20.0 38.00 - 44.00 40.15 Fresh 16-18# 2.0 37.50 37.50 Fresh 18-20# 33.00 33.00 A Fresh 20-25# 33.00 33.00 C SKINLESS, SQUARED Fresh 9-11# 39.00 39.00 E Fresh 11-13# 43.00 43.00 E Fresh 13-15# Fresh 15-17# SKINLESS, CENTER CUT Fresh 8-10# Fresh 10-12# Fresh 12-14# Fresh 14-16# PORK TRIMMINGS/BONELESS PROCESSING PORK (CHEMICAL LEAN) \*\*ABP:Combo 42% Frsh = 9.00 - 10.00 9.45 \*\*ABP:Combo 72% Frsh = 14.50 - 18.50 15.84 \*\*ABP:Combo Bnls Pic Frs = 19.00 - 22.50 20.75 \*\*ABP:Combo Jowl Frsh = 9.50 9.50 Lds Price Range Wghtd Avg. Combo 42% Fresh 26.0 10.50 - 12.00 11.07 Boxed 42% Frozen Combo 72%

Fresh 27.5 16.50 - 19.50 17.73 Boxed 72% Frozen 26.00 26.00 E BONELESS PICNIC MEAT Combo 72% Fresh 4.0 21.00 - 24.00 22.50 Boxed 72% Frozen 5.0 29.00 29.00 SKINNED JOWLS Combo Fresh 2.0 11.00 11.00 Boxed Frozen 2.0 17.00 17.00 FAT, VISUAL TRACE OF LEAN Combo Fresh Boxed Frozen TRIM, VISUAL TRACE OF LEAN Combo 12-16% Fresh unq Boxed 12-16% Frozen

\*\*Adjusted Base Price = Weighted average price for non-value added product calculated by subtracting the packer's value differential from the reported price of value-added product. Specifications for all reported cuts available upon request. STANDARD ADJUSTMENTS FOR CONVERTING TO VACUUM BASIS Loins (13-23#s): Butts (4-9#s): Vapack : report basis Vapack : report basis Gas Pak : minus \$2.00 Gas Pak : no price differential Paper : minus \$5.00 Paper : minus \$3.00 Combo : minus \$6.00 Combo : minus \$4.00 Spareribs: Adjustments for Trim - Vapack : report basis Bone-in Center Cut Loins: Polywrap: minus \$7.00 False Lean Off : basis Tenderloins: False Lean On : minus \$5.00 Vapack : report basis Boneless Center Cut Loins: Polywrap: minus \$10.00 1/4" Trim : report basis 1/8" Trim : add \$6.00

ABCDE after quotes represents days since last actual market test. Quotes are dropped after 5 days of no test or before if they no longer reflect current market conditions.

BELLY QUOTES FOR CME CASH SETTLEMENT - BELLY, SKIN-ON, UNTRIMMED LBS WGHTD AVG. Fresh 12-14# 7.0 38.57 Fresh 14-16# 20.0 36.40 Fresh 16-18# 2.0 34.00

### Frederick Livestock Auction

Frederick, Md.  
November 2, 1998

Report Supplied by Auction  
SLAUGHTER COWS: 85 HEAD, 1.00 LOWER. UTILITY 31.00-35.00; HIGH DRESSING 35.00-37.75; CANNERS 26.00-31.00; SHELLY 26.00 DOWN.  
BULLS: 4 HEAD, 1.00 LOWER. YG#1 1370 LBS. AT 40.00; YG#2 1600-1900 LBS. 36.75-38.00.  
FED STEERS: LOW CHOICE HOLSTEINS 1300-1660 LBS. 45.00-46.75; 1700-1850 LBS. 42.00-45.25.  
FED HEIFERS: 2 HOLSTEINS 1650 LBS. 35.50-36.75.  
VEAL CALVES: 182 HEAD. CULLS 85-110 LBS. 27.00-31.00, 60-85 LBS. 18.00-28.00.

FARM CALVES: HOLSTEIN BULLS STEADY. #1 95-120 LBS. 75.00-90.00; 90 LBS. 50.00-70.00; 85 LBS. 36.00-60.00; HOLSTEIN HEIFERS #1 90-120 LBS. 190.00-220.00; #1 85-110 LBS. 80.00-150.00; #2 75-85 LBS. 35.00-60.00; BEEF X BULLS 80.00-95.00; BEEF X HEIFERS 40.00-70.00.

BUTCHER HOGS: 47 HEAD SOLD IN LOTS OF 4 OR LESS. #1&2 12 HEAD 230-270 LBS. 27.50; 10 HEAD 235-285 LBS. TO 25.50; 5 HEAD 230-278 LBS. 21.00-23.50; #2&3 290-320 LBS. 21.00-23.00; 300-350 LBS. 29.00-31.00; 3 HEAD 400-450 LBS. 18.00-23.00.

SOWS: 1 HEAD 540 LBS. AT 18.50. STOCK CATTLE: FEW OFFERED. HEIFERS: 2 HOLSTEINS 200 LBS. AT 85.00; 1 HOLSTEIN FRESH HEIFER AT 810.00.

GOATS: 1 LARGE BILLY AT 94.00. PIGS AND SHOATS: BY THE HEAD, 16 HEAD 150-20 LBS. AT 4.00; BY THE LB., 4 HEAD 177 LBS. AT 30.00.

### Lebanon Valley Livestock

Fredericksburg, PA  
November 3

Report Supplied by Auction  
STEERS: CHOICE 60.25-63.50; SELECT 57.00-58.50.  
HOLSTEINS: CHOICE 53.50-54.50; SELECT 51.00-52.00; STANDARD 46.00-48.00.

HEIFERS: CHOICE 54.00-58.00; SELECT 50.75-52.00.

COWS: BREAKING UTILITY AND COMMERCIAL 33.00-36.00; CUTTER AND BONING UTILITY 31.50-32.75; CANNER AND LOW CUTTER 29.00-31.00; SHELLS 26.00-28.50.

BULLS: YG#1 1605-1900 LBS. 42.75-45.50; YG#2 1350-1715 LBS. 38.00-40.00.

FARM CALVES: #1 HOLSTEIN BULLS 95-115 LBS. 87.00-100.00, #2 HOLSTEIN BULLS 95-115 LBS. 72.00-85.00; #1 HOLSTEIN HEIFERS 95-100 LBS. 147.00-202.00, #2 HOLSTEIN HEIFERS 90 LBS. 125.00.

SOWS: US#1-3 14.00-17.50. BOARS: 560 LBS. .05. SLAUGHTER SHEEP: 145-165 LBS. 27.00-40.00.



**PRO-LIX**  
LIQUID FEED

In the dairy business, income over feed cost is the name of the game. Pro-Lix liquid feed supplements offer dairymen the means to maximize this value while getting the most from their cow's natural abilities.

Pro-Lix liquid feed supplements are concentrated sources of just what ordinary feeds lack: protein, energy, vitamins, minerals -- everything animals need for economical milk production and growth.

For replacement heifers, Pro-Lix means faster maturity and assurance that they'll get to the milking herd on time. If you trust your heifers to forage alone, they might not make it. (Bouvatec is Available)

For lactating cows, the nitrogen content of Pro-Lix means plenty of protein available for milk production and growth.

Finally, for dry cows, Pro-Lix not only helps maintain their health during the dry period it prepares them for the next lactation. The Ca P ratio in Pro-Lix helps control milk fever, while the Vitamin E and selenium aids in clean-up after the birth of a calf.

Best of all, Pro-Lix works with all types of pasture grass or forage, as a free-choice supplement, a top-dressing, or a ration mix.

The payoff is healthier animals and economical production, all year round!

#### MARYLAND

S/S Farm & Home  
Sykesville, MD  
410/795-1234

#### NEW JERSEY

Woodstown Ice & Coal  
Woodstown, NJ  
609/769-0069

#### WEST VIRGINIA

Cedar Ridge  
Fencing Co.  
Weston, WV  
304-873-1228

Stalnaker's Farm  
Weston, WV  
304-269-5042

#### PENNSYLVANIA

Bedford Farm Bureau  
Bedford, PA  
814/623-6194

Brookland Mills  
McVeytown, PA  
717/899-6772

Dayton Feed Mill  
Dayton, PA  
814-257-8812

G&R Liquid Feed  
Newville, PA  
717-776-4763

Heisey Farm Service  
Mt Joy, PA  
717-653-1568

#### Johnson Liquid Feed

Tunkhannock, PA  
717/836-1226  
717/836-4500  
1-800-475-4492

Martin's Ag Service  
New Holland, PA  
717/354-4996

Ross's Feed & Grain  
Quarryville, PA  
717/786-7361

Susquehanna Seed  
and Feed  
Mifflinburg, PA  
717/966-2580

H.R. Wentzel  
Bridgeport, PA  
717/789-3306

#### Seiple & Son

Easton, PA  
610/258-7146

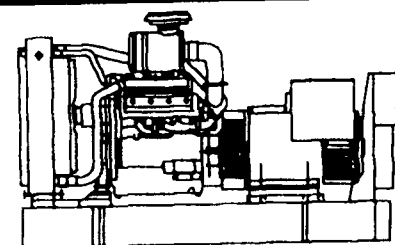
Tyrone Milling  
Tyrone, PA  
814/684-3400

Watson's Feed Service  
Mercer, PA  
412/662-5219

Whitmoyer Liquid Feed  
Myerstown, PA  
717/933-5011

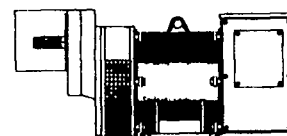
Farmers Union Co-Op  
Greencastle, PA  
717/597-3191

## GENERATOR SYSTEMS 1-800-779-8809



New & Used 5 to 2500 KW  
Diesel • Propane • Natural Gas

24 Hour Emergency Service  
Sales - Installation  
Maintenance Contracts • Rentals



### Tractor Driven

Generators 10-150 KW  
1800 RPM Brushless  
New & Used

**DYNA-TECH** Ind.

Dynamic Technologies

DYNA-TECH INDUSTRIES

602 E. Evergreen Rd., Lebanon, PA 17042  
717-274-8899 FAX 274-8934

Visit us on The Web Site: <http://www.dynagen.com>  
Ask About Our Lightning & Surge Protection Units  
Panel Mount • Plug-In • Electric Fence Protection



Leasing Available