

Meyers C-8.5 Snowplow
All Electric Controls
Fits 1 Ton & Large Trucks
Low Use, \$1,400
(717) 328-2336

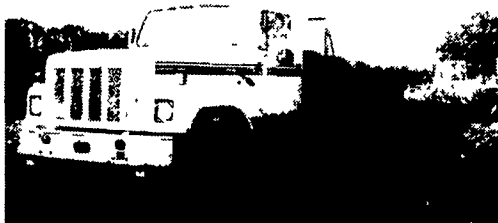


1992 Dodge 250 4x4
Cummins Diesel 120,000 Miles,
Loaded, Good Cond.
410-557-9559
No Calls After 9:00 PM

- 98 Ford Clubwagon XLT, 8/Pass., White, 5.4 V-8, AT, AM/FM/CAS, PW, PL, CC, Tilt, Dual-AC, Pwr-Seat, Airbags, 3,538 Mi.....**\$19,800**
- 97 Ford F-150 XLT 4x4, Blue, 4.6 V-8, 5 Sp., AM/FM/CAS, AC, PW, PL, CC, Tilt, Airbags, 39,103 Mi.....**\$17,900**
- 97 Ford Clubwagon XLT, 15/Pass., Maroon, V-10, AT, AM/FM/CAS, PW, PL, CC, Tilt, Dual-AC, Airbags, 52,083 Mi.....**\$16,900**
- 96 Ford F-150 4x4 Ext.-Cab, Eddie-Bauer, Maroon/Tan, 302 V-8, 5 Sp., AM/FM/CAS, AC, PW, PL, CC, Tilt, Airbag, 54,580 Mi.....**\$17,900**
- 95 Ford F-250 XL, 4x4, White, 351 V-8, AT, AM/FM/ST, Dual-Tanks, 8600/GVW, 2,411 Mi.....**\$16,900**
- 95 Chevy S-10, White, 4 Cyl., 5 Sp., 65,214 Mi.....**\$5,500**
- 95 Nissan Pathfinder XE, 4x4, Black, V-6, 5 Sp., AM/FM/CAS, AC, Tilt, 48,099 Mi.....**\$13,600**
- 94 Chevy 2500 Suburban Cheyenne, Blue/Gray 454 V-8, AT, AM/FM/CAS, AC, PW, PL, CC, Tilt, 8600/GVW, 110,174 Mi.....**\$12,900**
- 94 Chevy Astro LT AWD, 8/Pass., Maroon, 4.3 V-6, AT, AM/FM/CAS, AC, PW, PL, CC Tilt, PWR-Seat, 55,420 Mi**\$12,800**
- 93 Jeep Wrangler Hardtop, Teal, 4.0, 6 Cl., 5 Sp., AM/FM/ST, Tilt, 50,752 Mi. . .**\$10,900**
- 93 Chevy Beauville, 8/Pass., Tan, 350 V-8, AF, AM/FM/CAS, PW, PL, CC, Tilt, ABS, Dual-AC, 82,397 Mi**\$9,600**

Brubaker's Auto Sales
Myerstown, PA
717-866-5237

FOR SALE



International S-2500 Tandem
Axle Rollback, 26' Jerr Dann, Bed, 290
Cummins, 13-Speed RR, Needs Bed Work
\$22,500
717-866-2130
Ask For Ken

AM GENERAL 6x6



In-Line 6-Cylinder Cummins, with Turbo. 5 Speed with Hi/Low Transfer case. 900/20 Tires, Air Brakes, Locking differentials Cargo body A must for every farmer or off road work. Some with new engines and transmissions.
Priced from \$9,500 to \$11,500
All Road Ready EXCELLENT CONDITION
Call St. Marys, PA
(814) 834-1018

ULTIMATE spray-on linings



- PROTECT YOUR INVESTMENT**
- Spray-on up to 1/4" thick
 - Durable! Auto-stick truck bed liner
 - Chemical Resistant
 - Lifetime Warranty
 - Multiple Colors
 - Rust/Corrosion resistant

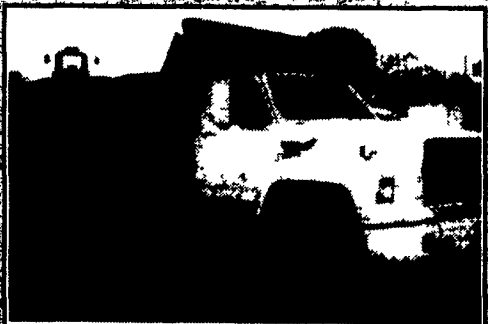
Rohrer Bus Service
1515 State Road, P.O. Box 100
Duncannon, PA 17020
1-800-735-2400 Fax: (717) 957-4884
Visit Us At: www.rohrerbus.com

35 TRUCKS & TRAILERS



1980 Mack Tri-Axle w/110 Apprentice
log loader, truck good, loader fair,
\$11,500 OBO

717-682-8557



92 FORD DUMP
Cummins Diesel, 6 Spd., 12 Ft. Bed, 28,000
GVW, Pinchle Hook, 23,000 Miles.....**\$19,500**

CURRY SUPPLY CO.
Curryville, PA
1-800-345-2829

FISHER TRAILER SALE

- Moritz '98 - (2) 13' Bumper 2-horse slant 7' tail \$3,600
- (1) 16' Gooseneck stock 6'8" wide 6000# axles \$4,800
- (1) 13' Bumper Stock \$3,200
- Colt '98 - (1) 16' Gooseneck stock \$3,500
- Used - 18' Gooseneck stock w/dress room 7' wide \$1,600
- 16' Gooseneck stock \$1,800
- 16' Gooseneck pipe stock \$2,800

RD 2 Box 136, McVeytown, PA
Phone **(717) 242-0941**
Fax **(717) 242-4377**

'92 Freightliner Model FLD112064 tandem axle tractor, Cummins L10 engine, 310hp, Jake brake, Rockwell 9-speed trans, 12,000# front axle, 36,000# rears, spring suspension, air ride cab, 176"WB, AC, AM/FM, heated mirrors, 10-aluminum wheels, good brakes & tires, 11R22.5, no caps, wetline, ready to work, light weight truck at 14,000#, \$16,500. 610-683-5438

'93 Chevy S10 Tahoe extended cab, V6, 5 spd, PS, PB, AM-FM cassette, 39,000 one owner miles, excellent condition, \$7,950 717-733-2873

'94 Dodge 1500, HD, 1/2 ton, 3.9 V6 Magnum, 5 spd, PS, PB, AM-FM, 6,400 GVW, new radials, excellent condition, \$8,900 717-733-2873

'95 Ford E150 Club Wagon, 8 passenger, 300 EFI, auto, PS, PB, AM-FM, 62,000 miles, dark blue, excellent condition, \$8,975. 717-733-2873

FOR SALE: 1994 FORD POWERSTROKE, Crew Cab, Dually, 130,000mi. Exc. Cond. (717)721-9866

For Sale: 45' Great Dane. 1982 Van Trailer, Very Good Condition. Good Chip Trailer. Call Destiny Transport. \$2,750. (814)228-3251.

HUNTER'S SPECIAL 1975 GMC Mobile Home. Runs Great. New Inspection. Sleeps 6. Oval-Appause. \$2,950. (717)859-2018.

'H 14' grain & cattle truck. Chevy '89 pickup body. Chevy 6000 22' box truck. 610-469-9633

JD 750, 4x4, 908-hrs w/ Loader Excellent Condition. \$8,600 (717)369-4115.

JD 8200 Series Grain Drill W/Grass Seed, 6x21 w/ Double Disc & Press Wheels. Excellent 7.30-10.30 (717)949-3769

KENWORTH FOR SALE, \$8,900 (negotiable) (717)927-6857

Little Giant Galvanized Gravity Bin, Excellent for Amish 7 30-10 30 (717)949 3769

MACK PARTS FOR SALE Engines, blocks, heads & cranks, cabs, hoods & doors, trans, rears, ALL MACK PARTS REASONABLE PRICES MACK TRUCKS BOUGHT (complete or parts) 888-625-6485

Menac 45' flatbed trailer, 1986 w/Tico 6-ton traveling boom (same as Hiab), \$11,000. 717/354-3105.

New 1997 F-350, 4x4, Dual Rear Wheel Cab/Chassis w/8 1/2' Steel Dump Body, 7.3 Diesel, Auto/Trans, Cab-White, Body-Green.; & New 1997 F-350, 4x4 Dual Rear Wheel Cab/Chassis w/8' Stake Body w/Dump, 7.3 Diesel Engine, Auto/Trans, Spd-Control, Tilt/Steer, A/C, Color-Dark Hunter Green. Please Call Joe Sheetz/Bill Martz (717)755-2911.

Snowplows: (2) 1997 Dodge 2500D, Myers E6 quick release. 1988 & 1978 Ford F250, Myers E47 angle frames. 8' airflow sand & salt spreader. Best offers. 717-865-3939

TRUCK PARTS: 3406-CAT, 325HP RT012513, Transmission w/Wetline. SQHD, Rears 4=33 Ratio. (610)489-0783. Leave Message.

WANTED: JEEP FC-170 C.O.E Cab, in good cond. (703)765-0938

WINROSS TRUCKS! Special limited editions, Penna Quality Eggs Ford Conventional/Tanker or Big Dutchman, cabover/dry van. \$43/ea. Postpaid Mastercard or Visa 717-393-5807



Includes 200,000 Mile Engine Warranty,
All Trucks Have Been Run on Dyno.
1994-195 E7-350 RTLO14610B 10 Spds.,
DS404 - 3.90R on Air, Steel Disc Hub Pilot,
295/75R 22.5 192 WB, 42" Highrise, 440,000
Miles.

ONE HERE & READY

To Put Out on LEASE
1999 Isuzu NPR 14 Ft.
Supreme Van Body,
Call For Details
Ask For Leasing Dept.



LESHER Mack SALES & SERVICE

2700 Cumberland Sts. Lebanon, Pa. (Route 422 West) 17042

717-273-4535

BOWERS USED CARS INC.

Route 30 West of Abbottstown, PA
7015 York Rd. 717-624-7072



93 FORD F250 XL 4X4
8600 GVW, Meyer Power Angle Snow
Plow 351 V-8 Auto PS
PB AC 99,000 Miles **\$11,900**



93 FORD PICKUP F150 EX. CAB, 4x4 351 V8, Auto Loaded, 12 Mo/12,000 Miles Warranty **\$10,900**



86 TRACK TRUCK 4 Cyl Jeep Eng Hydstatic Trans, Ski Low Low Hours **\$14,900**



94 CHEVY S-10 PICK-UP, V-6, Auto, PS, PB, AC **\$6,995**



96 DODGE RAM 350 Dually Cummins Diesel 5 Speed PS PB AC 410 Rear 63,000 Mi **\$19,900**



91 CHEVY 3500 EX CAB 4x4 DUALY Sitarado Loaded 48,000 Miles **\$14,900**



95 DODGE DAKOTA EXT CAB 4X4 SLT V8, Auto PS PB Loaded **\$11,900**



90 JEEP WRANGLER 6 Cyl, 5 Speed PS PB Mat Cond **\$5,995**



1991 Freightliner with 60 Series Detroit, 11.1 liter, 350 h p., Springride, Tandem, Air ride cab, 36" sleeper, 11 1-22.5 tires on Bud Wheels. Bergen rubber better 60% all around. \$12,500. Have 42" Kenworth sleeper, \$500. **(215) 822-3516**



GMC TRUCK 6V-92 Detroit, 8 Sp., Wet Line, Alum. Cab, 11R-22.5 Tires 80% (not caps)... **\$5,650**

CURRY SUPPLY CO.
Curryville, PA
1-800-345-2829