

JD 5300 4WD tractor w/540 front end loader, 1-owner, 5 years old, excellent condition, \$17,700; JD 455 manure spreader, 5 years old, good condition, \$3500. 814/367-5369.

JD 60, one owner w/#5 sickle, \$1,500. 410-833-9091

JD 6600 Combine, recent OH 1976 \$6900 800-919-3322.

JD 6620 Sidehill Combine, Excellent Condition, Low Hours, Shed Kept \$30,000/obo. (410)692-6825.

JD 6620 Sidehill, very good, \$25,900 717-437-2604.

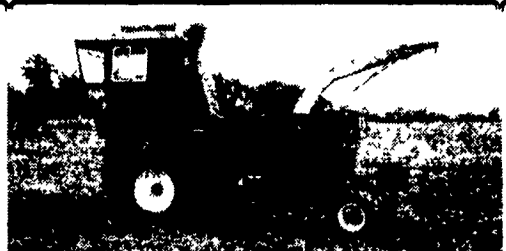
JD 7000 4-6 row corn planters from Mid-west, \$2900 to \$5500. Liquid fertilizer attachments. 7000 insecticide boxes, marker arms, hitches, monitors, soybean cups, transport wheels. 2-3 row planters, new & used. Gandy insecticide boxes. Cultivator, fertilizer, side dressers. PEQUEA PLANTERS 717-442-4406

JD 7000 corn planter w/monitor, best offer over \$4000. 814-349-5992

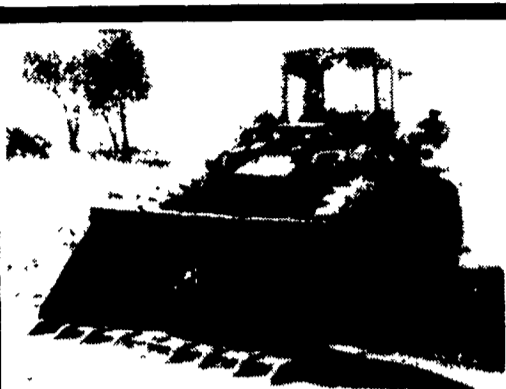
JD 70, gas, WF, rock shaft, \$2,700. 410-833-9091

JD 70 standard, PS, 3pt hitch, live PTO, 2800 hrs, \$1900. 609/769-4025.

JD 7210 NEW tractor, 4 WD, cab, power qd, left hand reverser, \$48,500 301-733-2195.



**NI 709 UNI 4X4,**  
With 767 Chopper, 2,400 Hrs.,  
Good Condition  
**\$8,500**  
**(717) 627-7381**



**Terex 72-31 Rubber Tired Loader, 4 Wheel Drive, Articulated, 2.5 Yard Bucket w/Teeth, Enclosed Cab**  
Curry Supply Co., Curryville, Pa.  
**1-800-345-2829**

**FORRESTER FARM EQUIPMENT LTD.**

1475 Orchard Rd. Chambersburg, PA 17201  
Phone: 717-263-0705

NEWHOLLAND Sales-Parts-Service Credit Company

**BEST BUYS IN USED EQUIPMENT**

**TRACTORS**

Ford 8630, Power Shift, 4WD, Cab & Air  
Ford 8210, 4WD, Cab & Air  
Ford 8210, 4WD, Cab & Air  
Ford 7710 w/Cab  
Ford 5640SL Cab & Air  
Ford 5600  
Ford 5600, New Paint, New Tires  
Ford 4600 w/New Paint  
Ford 4500 w/Ldr  
Ford 2600  
(2) Ford 2600 w/Power Steering  
Ford 555 TLB, 4WD Will Rent  
JD 3650, 4WD w/Cab & Air, 114 HP  
JD 2550 w/Cab & Air  
IH 460 w/Ldr  
Farmall H

**SKID STEER**

NH L555  
NH L553, 220 hrs. **SOLD**  
NH LX665 w/Cab & Heater  
NH LX865  
(2) NH LX885

**COMPACT TRACTORS**

**USED EQUIPMENT**

MF 1010 w/60" Mower  
NH 853 Round Baler  
NH 849 Round Baler  
NH 310 Baler w/70 Thrower  
JD 435 Round Baler  
NI 5209 9' Disc Mower  
NH 1411 Discbine  
NH 411 Discbine  
(2) NH 499 Haybine  
NH 469 Haybine  
Hesston 8200T, SP Haybine, 12' Cut, **SOLD**  
JD 1219 Haybine w/Stub Guards  
NH 962W4 Corn Head  
IH Crop Chopper  
NH 892 Chopper  
NH Super 717 Chopper  
ATI 800 Series Preseeder  
Better Bilt Tank Spreader, 3,600 Gallon

Located: 1 Mile Off Exit 8, On 696 North To Orchard Rd.

Hours: 8:00-5:00 Mon. Thru Fri. **Farm Plan**  
8:00-12:00 Saturday **A Service of FPC Financial**

**Take Your Pick**

Quick Attach Sweepster Brooms In Stock at Binkley & Hurst Bros. Inc.



For Case Unloaders and Other Brands with Universal Quick Attach - Ask For Rick or Amos Sr. Good For General Cleanup & Snow Removal

**BINKLEY-HURST BROS. INC.**

133 Rothsville Station Rd.  
P.O. Box 0395, Lititz, PA 17543-0395  
(717) 626-4705 1-800-414-4705 Fax (717) 626-0996

**Binkley & Hurst Bros. Inc. Has A Heavy Duty KNIGHT In Stock For You!**

*Retire Your Current Spreaders*

Get the soil nutrients needed to grow your corn crop this year. If you have pen pack, sticky feed lot or slurry-type material that needs to be spread fast...and spread evenly, you need the **KNIGHT PRO-TWIN SLINGER**.



8014

8018

8024

8030

DIMENSIONS	8014	8018	8024	8030
Weight (lbs.) - tow / truck	3700 / NA	5520 / 5200	6194 / 6000	8785 / 7270
Height				
- tow - single	w/ 19 x 16 1 tire = 57"	w/ 16.5 x 16.1 tire = 65 1/2"	w/ 19 x 16 1 tire = 77"	w/ 21.5 x 16 1 tire = 81"
- tandem	w/ 14L x 16.1 tire = 60 1/2"	w/ 10.00 x 20 tire = 65 1/2"	w/ 15 x 22.5 tire = 77"	w/ 18 x 22.5 tire = 82.5"
- truck	NA	50" above trk frame	59 1/2" above trk frame	64" above trk frame
with wood rails	add 4"	add 4"	add 4"	add 4"
with splash guard	add 9 1/2"	add 9 1/2"	add 9 1/2"	add 9 1/2"
with lid	NA	contact factory	contact factory	add 20 1/2"
Width at top (inside/outside)	63 62/69 65	67/ 74	71/ 78	90/96
Width outside of tires - tow only	19 x 16.1 = 95"	16.5 x 16.1 = 98 1/2"	19 x 16.1 = 106"	21.5 x 16.1 = 111"
Length inside hopper	14'	10 00 x 20 = 93"	15 x 22.5 = 101"	18 x 22 5 = 108"
overall - tow / truck	20' 5"	16'	18'	18'
Capacity gals./cu.ft./cu.yds.		22' 10" / 18'	22' 10" / 18'	22' 10" / 18'
w/o rails (struck level)	1241/165/ 6.1	1584/212/ 7.9	2176/291/10 8	2780/372/ 13 8
with 4" rails (struck level)	1426/190 6 / 7 1	1807/242/ 9.0	2400/321/ 11 9	3080/412/ 15.3

See Binkley & Hurst Bros. For The Latest In High Capacity Spreaders

**INTRODUCING THE NEW KNIGHT 1170 COMMERCIAL MANURE SPREADER**

700 Bushel Heaped, 443 Cubic Feet Struck, 22' Length

**LOOK AT THESE EXCLUSIVE FEATURES!**

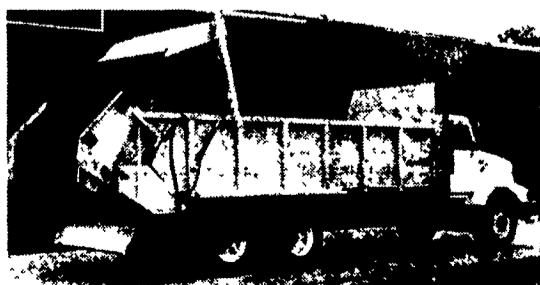
- Two Piece 3/4" HMW Polyethylene Floor Less Friction, Less Power Required For Unloading, Heavy Duty For Long Life, Less Freeze Down
- Hydraulic Dual Apron Drive With 2" Shaft Variable Speed Control, More Durable, Each Apron Has Separate Drive Shaft, Easier To Maintain, Load Can Be Unloaded Even If One Apron Is Broken
- Parallel Shaft Apron Gearbox - 90% Efficient vs. Worm Gear Box of Approximately 55% Efficiency, Requires Less Power, Generates Less Heat, More Than Twice as Strong as Standard 50:1 Gearbox, Less Wear
- Mechanical Swing-Out Beaters Standard Equipment, Allows Beaters to Swing Out To Clear Foreign Objects
- Hydraulic Swing-Out Beaters Optional, Allows The Operator To Open The Beaters "On The Go" From The Cab

**OPTIONS: Allow The Customer To "Customize" A Spreader For His Application**

- 3/16" All Steel Hydraulic Endgate with Two Cylinders
- Hydraulic Rear Pan
- Hydraulic "On The Go" Swing-Out Beaters
- Lower Spinner Beater
- Highway Light Kit

**SPECIFICATIONS:**

Capacity: 700 Bushel (heaped)  
443 Cubic Feet (struck)  
Inside Width: 81 50"  
Loading Height: 57 25" (truck frame to top of side)  
Beater Diameter: Two - 24" diameter  
Weight: 8500 lb  
Width (overall): 100 50"  
Overall Length: 281"  
Number of Rooster Comb Paddles Per Beater: 16



1170 shown with optional hydraulic lower rear pan, lower spinner beater, hydraulic end gate, and hydraulic "on the go" swing out beaters

**NEW!**

**Built New from the Ground Up With 50 Years of Testing**

**NEW 300 Bushel Model 1030, 400 Bushel Model 1040, 500 Bushel Model 1050, 600 Bushel Model 1060, Knight Box Spreaders**

featuring:

- 3/4", ultra-high molecular weight, solid poly floor.
- Thicker, 10 gauge copper bearing steel sides and front featuring all-welded construction.
- 3/16" thick, all steel rear endgate.
- Variable speed hydraulic apron drive with tractor-mounted control.
- 26" rooster-comb beater.

10 Year Warranty on Side Rust Through and on the Poly Floor

500 & 600 BUSHEL MODELS ALSO

**BINKLEY-HURST BROS. INC.**

133 Rothsville Station Rd.  
P.O. Box 0395, Lititz, PA 17543-0395  
(717) 626-4705 1-800-414-4705 Fax (717) 626-0996