

Public Auction Register

Closing Date Monday 5:00 P.M.

of each week's publication

Internet Sale Register will be updated every Sat. at 2:23 P.M.

SAT NOV 7 - 8AM 1044 Ridge Rd Shippensburg PA Toys train set & acc literature manuals antique tools pony size buggy Plasticville Pcs & more By Clare A Kerns Little IKE Eichelberger, Auct 717-432-0006

SAT NOV 7 - 8 30AM Farm Machinery Tools Household Guns Hay At 17527 Spielman Rd Owner Georle Stotler C Floyd Davis, auct

SAT NOV 7 - 8 30AM Amish/Mennonite Quilts Antiques Coins Owl Barn Auction Cos Rustic 1800's Bank

Barn 1/2 mile N of Exit 14 of the PA along Rt 75 on the right-hand side In Willow Hill PA Stephen D Bartos owner/auctioneer

SAT NOV 7 - 8 30AM Antiques, toys pedal cars 2135 Cloverleaf Rd Milton Grove PA Rt 283 to Rheems/Elizabethtown Exit, turn N on Cloverleaf Rd By Skip Martin Harold "Abe" Shaffner, auct

SAT NOV 7 - 8 30AM Antiques Diamond & Gold Jewelry Coins Estate of Helen W Snyder 25 Bentz Mill Road, Kraltown, PA York Estate of Helen W Snyder Rentzel's Auction Service

SAT NOV 7 - 9AM Koser Building Materials, 523 Koser Rd,

Elizabethtown, PA 17022 Wolgemuth Auction Service

SAT NOV 7 - 8 30AM Trains Murry Auction Emporium, 23 N Water St, Lititz, PA Elmer Murry Aucts

SAT NOV 7 - 8 30AM Tractors & toys located at 128 Weaver Rd, Lancaster, PA By Jay Richard Low Estate Witman Aucts

SAT NOV 7 - 9AM 50 Yr Private Collection Al Starr Fireman's Building Willow St Pa Rt 272 N directly behind Willow St Fire Hall For Donald & Dorothy Alt-house Miller & Siegrist Aucts

SAT NOV 7 - 9AM Auction of the Beatrice Lantz Estate Approx 2 miles N of Reading and 5 miles S of Bernville on Rt 183 take Upper Van Reed Rd south 1.5 miles to sale site Richard A Kramer, auct

SAT NOV 7 - 9AM Tractors, farm machinery, lawn mowers, tools & misc At 16794 Gun Club Rd, New Park, Pa Approx 5 miles NE of Stewartstown, Pa Mr & Mrs Gentry Day, owners Sechrist, aucts

Auction Service

SAT NOV 7 - 9AM Tower City, PA 1.3 miles SE of Tower City & Rt 209, take exit 33 off I-81 & follow auction signs from Rt 209 day of auction Clocks, toys, music boxes, etc from the residence of Donald I Lucas Lele Dockey, auct

SAT NOV 7 - 9AM 230 Elizabethville btwn Elizabethville & Berrysburg, PA Farm machinery glassware coins By Carl R Martha Hess David Deibler & Ed Shoop Aucts, 717-896-8530

Outstanding Unreserved Antique Auction Of Valuable Carnival Glass-Furniture-Antiques-Etc.

On: SAT., NOV. 7, 1998 at 9 A.M.

At: 3013 E. Market St., York, Pa. at the Springettsbury Fire Co. Social Hall. To be sold for the Estate of Chester & Helen Swank of New Cumberland, Pa. & others.

Carnival Glass

Approx. 450 pieces of Carnival Glass consisting of: bowls, vases, candle holders, water sets, compotes, berry sets, plates, small & large dishes, tumblers, ash trays, Bon bon dishes, goblets, sugar & creamers, rose bowls, etc. Also furniture & general antiques.

NOTE: Please call auction firm for a more complete listing. Not responsible for accidents on day of auction.

TERMS: Cash or approved check. no out of town or out of state checks.

INSPECTION; Friday, Nov. 6, 6:30 P.M. to 8 P.M. & 1 Hr. prior to auction.

Gilbert & Gilbert Auctioneers
Brian L. Gilbert Lic. #2256
Jacob A. Gilbert Lic. #336
Phone (717)252-3591

Farmersville Auction

Located in Farmersville, 3 miles east of Brownstown, Lancaster Co., PA

Antiques and Collectibles of all kinds.

Too much to list!

Tues., Nov. 3rd 1:00 P.M.

Furniture sells at 7:00 P.M.

Visa, Mastercard, Discover, MAC Accepted

Consignments Welcome

Call Larry E. Rutt 717-354-5095

Auct. Lic. #AU-2455-L



Consignment Auction

WINROSS, ERTL, HESS TRUCKS, FARM TRACTORS & MISC. TOYS

Wed. Nov. 4, 1998 - 6:30 PM

LOCATED AT: A. & C. DIFFENBACH AUCTION, INC.

100 W. JACKSON ST., NEW HOLLAND, PA 17557

AUCTION HELD 1ST WEDNESDAY

OF EVERY MONTH

Consignments Welcome!

Call (717) 355-7253

Receiving Time - Mon Thru Fri.

8:00 AM To 4:00 PM At The Auction Center

TRUCK SALE WILL BEGIN AT 6:30 PM

A. & C. DIFFENBACH AUCTION INC.

100 W. Jackson St., Box 186

New Holland, PA 17557

Phone: (717) 355-7253

Fax: (717) 355-9547 Alan Diffenbach Auct. - AU2258-L

PUBLIC ESTATE AUCTION SAT., NOV. 7, 1998 TIME-9AM

Located in Cumberland Co., at the Empire Friendship Firehall, 177 Spring Road (Rt. 34), Carlisle, PA

ANTIQUES-COLLECTIBLES-PRIMITIVES

Sun Mfg. Co. lap coffee grinder; early electric toasters & metal toast racks; various kitchen utensils to incl. bone handled flatware & carving set; tin spice box w/6-md spice tins; 24-hole tin candle mold; rug beaters; 3-straight razors; lg. & sm sadirons; coal ash sifter; oil lamp w/wall bracket; miniature oil lamps; barn lanterns & 1-PRR lantern frame; 2-kerobuggy lights; kerosene slide projector w/orig. box; stoneware crocks & jugs (1-2 gal ES & B jug); Bennington spittoon; yellowware bowl; wooden document type box; balance scale housed in carved wooden box w/marble top; castiron pcs-sm. scales, bull dog & turtle door stops, FA fire mark; cow bells; early photo album w/Civil War soldier (photo taken by local Blain photographer); Kaleidoscope w/pedestal stand; Pianonette Advert co. string instrument; early framed prints; men's 7-1/4" derby hat; tool-Russell & Jennings Spur auger wood bit set w/3-dwr wooden case; large bottle & jar collection (over 100) to incl embossed baby, ink, medicine (Lancaster's Indian veg. Jaundice Bitters & Warner's Safe Kidney & Liver Cure), milk, soda, whiskey, canning, etc. Note-some to be offered individually, most to be offered in group lots; 2-Planters Peanut counter jars (1-w/4-lg peanuts on corners & 1-oct. jar w/5ct & Mr. peanut on 4-sides); paper weight, turtle & match pack cover collections; china & glassware--large qty of fine china & glassware to incl Aynsley bone china, Austria, Bavaria, Belleek (6-pcs), Germany, Limoges (lots of it), Maastricht, Meissen; Noritake & Nippon, Royal Doulton, & other signed pcs; lg Sebring platter; 2-Gaudy Welsh dishes; 7-Majolica pcs; ironstone & copper lustre; Meakin 6pc & Burgess 2pc bowl & pitcher sets; B&G & Goebel plates; Buffalo Pottery blue willow pitcher; few Stangl pcs; 2-cow lid covered dishes; lg qty of bone china cups & saucers; fine cut glass bowls, pitchers, vases & glasses; lead crystal decanters; stemware glasses; lion & elephant glass lid covered dishes; milk glass covered dish; cobolt liqueur set; Ruby Flash decanter set; other Ruby Flash incl 2-Hanover Fair pcs (1920) & 1-Atlantic City pc; Note--there's much more china & glassware; Books-Chandler's Perry Co Railroads, Arrowmaker, & Hunting in Perry Co; reprints of local histories incl Atlas of Perry, Juniata, & Mifflin Co; Wrights perry Co History; A Bicentennial History of the presbytery of Carlisle; Anesthesiology & medical books; cook books; few doll books; 2-early 1900's postcard albums & few perry Co photo cards.

DOLLS-TOYS

Castiron "Champion" motor cycle; sm castiron gas & fire trucks; tin wind-up train engines; lehmann friction tin seal; tin Bumper car w/clown; other early wind-ups; celluloid animals; paper mache rooster & Chinese man; lg qty of fisher Prices--numerous wooden pull toys, Elizabeth doll (205) in box, rag dolls, circus wagon, house & hospital, bull dozer & front end loader; Hubley cap gun (new); Ideal OB mtr boat w/real motor (in box); Mattel carboard "Jolly Time" Jack-in-the-Box; Tonka toys (some in boxes); lg. Model "Adam" Motor Grader No. 512; Tru Scale tractor, disc, & plw; AC combine; 1961-red Corvair promo in box; Tootsie cars; 48-car Hotwheel case; several china & metal child's tea sets to incl 48pc lit'l Bo Peep alum set w/box; Betty Crocker elect tin cook stove w/pots & pans; Flexible Flyer No. 47 sled 9excel cond); Horsman dolls--Mary Popins, Michael & Jane, Teensie Baby; Mattel--Todd & Dr. Dolittle, 2-Astronaut Barbies; Hasbro's Flying Nun; Coleco's Holly Hobbie; 2-Effanbee; paper dolls--Marilyn Monroe, Loraine Day, Janet Leigh, Patti Page, Indians, Country cousins, White House Party Dresses, Chuck & Di (1982); Shirley Temple No. 301 magnetic doll; premium dolls--Play Doh. Ronald McDonald, Little Hans "Chocolate Maker", Nestles; 9" German bisque head doll w/oc eyes marked 500.2/ox; 3-comp dolls (rough); sm china hd doll w/cloth body; 2-Navajo cloth dolls; other misc dolls; doll wicker buggy, stroller; poster beds, high chair, rockers, playpen & cradles; little bit of doll clothing & sm shoes.

FURNITURE

Cherry school teachers slant top desk (nice); tilt top pie crust table; 1-dwr cherry night stand; 2-dwr dbl dropleaf stand; bent & ladder back side chairs; 1-decorated Federal style side chair; 2-childrens arm rockers; decorated plank bottom nursing rocker; dovetailed baby cradle; washstand w/side towel bars (needs work); walnut card table & 4-folding chairs; 3-section rm divider; early metal & glass medical display cabinet w/cabriolet legs (5'h).

FISHING-TOOLS-MISC

Harnell 642R 2 pc & Kingfisher 370-6 1/2 2pc spin rods w/protective case; Mitchell Garcia C.A.P reel; 2-tackle boxes; CC Injured Minnow w/box; tools-Gravely Super tractor w/frt end mower; Stihl FS52 weed wacker; Garden Way Brush cutter & pwr scythe; 2-yard spreaders (1-pull-behind); Sears wet/dry vac; 1/2hp Campbell Hausfeld tankless air comp; Leroy Lettering Kit (Keuffel & Esser Co) w/dovetailed box; sm pwr tools; 6/12v, 4amp Marquette charger; handtools; wooden step ladders; misc-doctor's exam table; cameras & photo equip.

Auctioneers notes--Dr. Hampton was head of the Anesthesiology Dept at Hanover Hosp, Jefferson medical (Phila.) & Yale University, he collected bottles & jars, match pack covers, & toys. Mrs. Hampton enjoyed fine china, glassware, dolls, turtles, & antiques. It's impossible to list everything!!!

Special preview 5-7pm, Fri., Nov. 6th. Doors open 7:30am day of auction. Plenty of parking. Seats provided. Food stand provided by Empire Friendship Fire Co.

Terms-Cash or approved Pa check only. No-out-of-state checks accepted w/o prior approval.

Nevin AU 2553-L
FAHNESOCK'S
582-245-
8565 Auction Service 2727

the Elinor D. Hampton estate
Lou Hampton, Executor
D. Magee, aa-2387-L

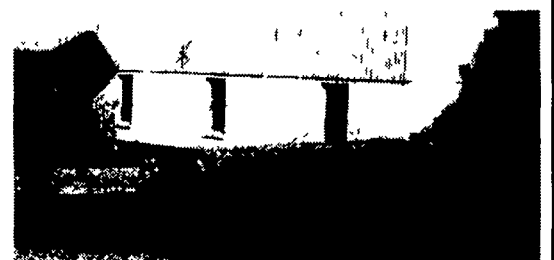
SKE CONSTRUCTION INC. PUBLIC AUCTION MASONRY EQUIP. & TOOLS

TRUCKS, 2 PETTIBONES - SKID LOADER THURS., NOVEMBER 12, 1998 Auction Time 11 A.M.

LOCATION: 426 California Rd, Morgantown, PA From Morgantown Rt 23 West approx 2-1/2 miles turn right onto California Rd go approx 1-1/2 mi to auction on right Caernarvon Twp, Lanc Co



1995 Pettibone B-66 just under 2000 hrs. Cummins diesel, ex cond



1977 Mack truck, 300 HP Mack diesel eng, 5 spd trans, 8,000 lb front axle, 34,000 lb comb rear axles, 14' flat bed w/dump, good cond



1986 Bobcat #743 skid loader w/stone & dirt buckets, pallet forks & mounting for backhoe approx 2200 hrs.



1987 Eager Beaver trailer - GVWR 39,040 lb

1987 Pettibone B-66 approx 7500 hrs Cummins Diesel, good cond; 1986 Ford F-250 pickup 302 V8 heavy duty, 4 spd trans; 1986 Ford F-350 crew cab pickup - 6.9L diesel, Warner 4 spd. trans; Hyster Mod H50H tow motor - 5,000 lb. lift cap. - propane fuel, 1978 Zimmer trailer, GVWR 6000 lb

Non-stop Masonry Tower Scaffolding - Components to set up a complete operating system to cover approx. 100 lin. ft. of wall approx. 25' high - ex. cond. between 3 & 4 yrs. old - (call SKE for more info.)

Biljax Pipe Scaffolding - approx 14 sections 6'6" high x 5' wide, approx 25 sections of 5' high x 5' wide - access include approx 30 screwjack leveling feet 27 Side Brackets & Misc safety railing, approx 50 - 16' Laminated Scaffold Planks, Misc 8' Planks, Target Masonry Table Saw 220 V w/ 14" Diamond Blade, Linc AC 225 Welder, Stow 2 Bagger Mortar Mixer, Stone Mod, 850 2-

1/2 Bagger Mortar Mixer, Stow 6 cu ft Concrete Mixer; Wyco Concrete Vibrator, Multiton Pallet Jack - 5500 lb. lift; Stihl 12" & 14" Cutoff Saws; Makita Mitre Saw w/14" Wood-cutting Blade; Rockwell Wood-cutting Table Saw; 2 Propane Heaters; Misc Shovels, Wheelbarrows; Mud Pans; Chains; Chain Binders, Ratchet Tiedown Straps, Etc.

NOTE: SKE Construction Inc also trading as Morgantown Masonry, has operated a residential carpentry & commercial masonry business since 1980 Jeff King & Rich Esh have recently sold their masonry operations to Robert Miller who will continue to do masonry work as Morgantown Masonry Inc while SKE will continue to do residential carpentry. As a result of this transition, the following machinery & equipment will be offered at Public Auction Very Few Small Items. Auction to begin w/sm items followed by larger equipment & trucks. Be there early - not a long auction Terms are cash or good PA check No out of state checks unless current bank letter of credit addressed to this particular auction Food stand

Auction conducted by Randal V Kline, Lloyd Kreider Roy Good, Jr., Auctioneers Lic #2116, #499, #513 717-445-4309

Terms by

SKE CONSTRUCTION, INC.

610-286-6166



AUCTIONEERS