

Lawrence County Holds Junior Livestock Sale

MARSHA ANN CHESS
Mercer Co. Correspondent
NEW CASTLE (Lawrence Co.) — Buyers, who wanted to support the 4-H and FFA youth programs snatched up prize winning animals at the Lawrence County junior livestock sale held during the Lawrence County Fair at the fairgrounds near New Castle.

The grand champion market goat was shown by Courtney Stickle, Volant, and was purchased by Dale and Mark Cunningham auctioneers for the

(Turn to Page A41)



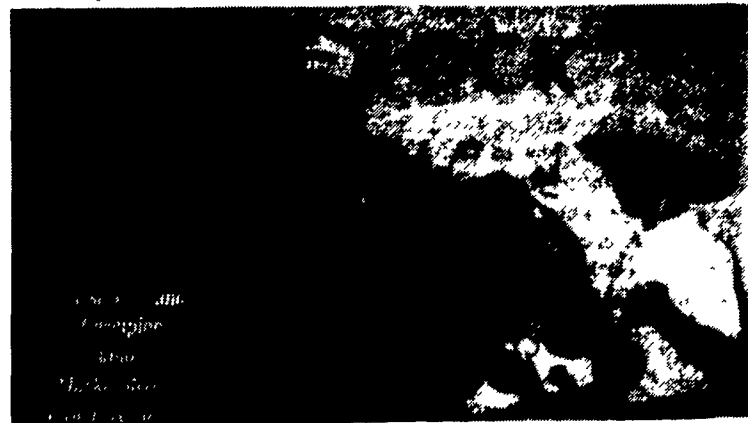
John Altmeyer of Custom Fab Trailers purchased Dennis Book's grand champion hog for \$5.00/lb.



Amy Jo Burry poses with Nancy Bishop of First Federal Saving Bank of New Castle who paid \$7.50/lb. for her grand champion market lamb and Lawrence County Lamb and Wool Queen Sally Galbreath.



Jill Book shows off her grand champion steer to Craig Campbell and Jo Hirsch of Hoss's Steak and Sea house who purchased it for \$2.40/lb.



Josh Coulter and buyer Jo Hixenbaugh of Tractor Supply Company pose with the reserve grand champion steer, which brought \$1.40/lb.

6th Annual TOY SHOW
SATURDAY, NOV. 14, 1998
9:00 A.M. TO 2:00 P.M.
MASON-DIXON AUTO AUCTION
GREENCASLE, PA
Take I-81 to PA Exit 2 (Rt. 11 North)
TRUCKS * CARS
BANKS * BARBIES
RACING COLLECTIBLES
FARM & CONSTRUCTION
GAS STATION PROMOS
ACTION FIGURES
FAST FOOD COLLECTIBLES
& MORE!
Admission \$2.00- Children Under 12 FREE
For Information Call:
Dale Martin (301) 797-4428

Wood Burning Cookstoves
Get ready for the turn of the century

Also available in gas or electric self-clean convection

Heartland® Appliances Inc.

LEACOCK CENTER
89 Old Leacock Rd., Ronks, PA 17572
717-768-7174
Mon., Wed., Thurs. 7 to 5.
Tues., Fri. 7 to 8 Sat. 7 to 12

CONCRETE Problems? Ritchie Solutions.

54" and 90" Units Available

Rugged Construction
The WaterMaster from Ritchie is built for long life... and we'll guarantee it for 10 years. With its one-piece body construction of durable impact-resistant roto-cast polyethylene plastic, the WaterMaster won't deteriorate like concrete.

Dependable, Economical Water Delivery
Sealed urethane foam insulation protects water from cold, allowing the unit to operate longer before the constant flow is turned on, creating a reduction in water waste. An optional supplemental electric heater is available. Ritchie's nonmetallic valve delivers 18 gallons of water per minute at 60 psi, with 30 years of time-tested reliability.

Easier to Maintain
WaterMaster fits over an existing stem wall and unlike concrete is lightweight and easy to install. Built-in overflow and drain eliminate troublesome standpipes. Plus, the WaterMaster is easier to clean and service than concrete. Top cover opens without tools, for ease of service. Smooth, rounded trough slopes toward a protected 3" drain for fast, easy cleaning.

Durability, easy maintenance and reliability — with less water waste. All backed by 75 years of dependable service. Guaranteed. Just ask a user, then

Buy a Ritchie and Relax... Your Water's Worth It!

Ritchie®

ASK ABOUT OUR MANY MODELS IN STOCK! ELECTRIC OR ENERGY-FREE

DISCOVER

Real Versatility...
An Electric-Free Fountain from Ritchie

Our unique disc-shaped closure could make the Ritchie Thrifty King the most versatile fountain on the market. Unlike a ball closure, our disc "tips". The higher water level means livestock don't have to lean in so far to drink. That makes drinking easier for smaller animals and with our tapered opening, it's easier for larger animals too. Water both from the same unit.

Ritchie Protects From The Cold Too
If you worry about freezing, Ritchie's patented water seal and insulated drink well keep cold air from getting to the valve and prevent heat loss. Plus, our nonmetallic float and valve have proven their resistance against corrosion and cold, with 30 years of time-tested reliability. For extra protection, the optional thermal tube helps prevent supply line freeze-up.

Discover the versatility and freeze protection of a Ritchie Thrifty King electric-free fountain, all backed by 75 years of dependable service.

Buy a Ritchie and Relax... Your Water's Worth It!

Ritchie®
Ritchie Industries, Inc.

Patent Design/Patent Nos. 4,739,727 & 4,646,687

RYDER SUPPLY CO.

539 Falling Spring Road
P.O. Box 219
Chambersburg, PA 17201-0219
Phone 717-263-9111