



Clydesdale show grand champion stallion, Nebergall Bros., Arthur, Ill.



Percheron show grand champion stallion, Windmere Farms, Spring Mills.



Clydesdale show grand champion mare, Pat McMahan, Houston, Texas.

## Horse Judging Concludes At KILE

HARRISBURG (Dauphin Co.) — The Keystone International Livestock Exposition (KILE) showcases some of the nation's finest horse breeders and exhibitors at the Farm Show Complex.

Now in its 42nd year, the show is sponsored by the Pennsylvania Livestock Association in cooperation with the Pennsylvania Department of Agriculture and the Pennsylvania Farm Show Commission. The following champions were selected in the horse competition:

Appaloosa Show "A": grand champion stallion, Michael and Kathy Wachter, Harrisburg, Pa.; grand champion mare, John and Phyllis Harkins, Forest Hill, Md.; grand champion gelding, Tammy Long-Mace, Newmanstown, Pa.

Appaloosa Show "B": grand champion stallion, Ronald and Rita Cluck, Richfield, Pa.; grand champion mare, Dennis and Barbara Dixon, Berry, Ky.; grand champion gelding, Tammy Long-Mace, Newmanstown, Pa.

Arabian Show: grand champion stallion, Randy Stoneback, Oxford, Pa.; grand champion mare, Fred and Sherry Lutz, Oxford, Pa.; grand champion gelding, Mary Jane Hanson, Lehigh, Pa.

Belgian Show: grand champion stallion, C. Orendorf and C. Lemley, Waynesburg, Pa.; grand champion mare, Jim Curtis, Urbana, Ohio; grand champion gelding, Dean

and Kelly Woodbury, Winchester, Ind.

Clydesdale Show: grand champion stallion, Nebergall Brothers, Arthur, Ill.; grand champion mare, Pat McMahan, Houston, Texas; grand champion gelding, George Hofmeister, Paris, Ky.

Hafflinger Show "A": grand champion stallion and mare, Spring View Farm, Bellefonte, Pa. and grand champion gelding, Easton-Ayers Hafflingers, Caldeonia, N.Y.

Hafflinger Show "B": grand champion stallion, Spring View Farm, Bellefonte, Pa.; grand champion mare, Bryan E. Wynn, Acme, Pa.; and grand champion gelding, Zane and Arlene Brown, Acme, Pa.

Paso Fino Show "A": Bella Formas Championship stallion, Joshua Swimer, Ohiopyle, Pa.; Bella Formas Championship mare, Earl and Dawn Burg, Red Lion, Pa.; Bella Formas Championship gelding, Sandra Thomas, Sykesville, Md.

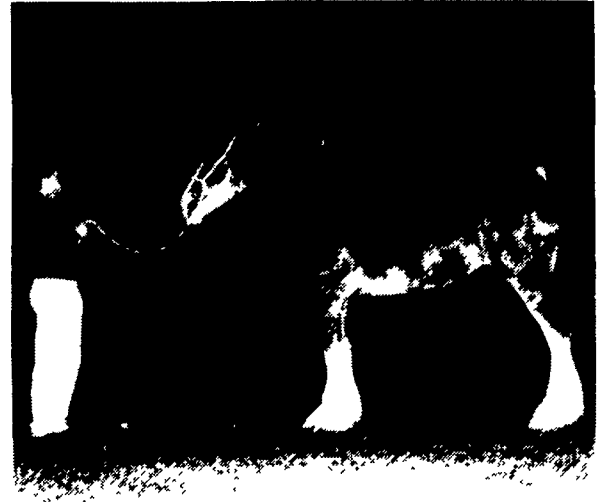
Paso Fino Show "B": Bella Formas Championship stallion, John Armstrong, Franklin, Mass.; Bella Formas Championship mare and gelding, Earl and Dawn Burg, Red Lion, Pa.

Shire Show: grand champion stallion, Robert and Michele, Oxford, N.C.; grand champion mare, Lisa and Ronald Young, Lebanon, Ind.; grand champion gelding,

Hobert O. Skaggs, Indianapolis, Ind.

Hitch Show: Supreme champion six-horse hitch, Gregory J. Lurvey, Oconomowoc, Wis.

(Turn to Page A25)



Clydesdale show grand champion mare, Pat McMahan, Houston, Texas.

# BRINGING TECHNOLOGY Down to Earth

Your NC+ Dealer has the genetically superior hybrids and varieties that will yield for you

### NC+ 2395

100 Days

Performance pacesetter in a wide range of 100-day environments.

### NC+ 3448 New

107 Days

The new pacesetter in the 105-107 maturity zone

### NC+4646

111 Days

Defensive yield performer for higher-stress environments.



### NC+ 4880

112 Days

Number one yield performer in the 109-113 day range.

### NC+ 5445

114 Days

The proven leader in 114 day yield and agronomics.

### NC+5697

114 Days

Top-end yield potential and solid early growth.

Call District Sales Manager Harvey Doyle at 724-459-8580 or see one of these NC+ Dealers.

AARONSBURG  
MICHAEL SPEICHER

CANTON  
ED PEPPER • 717-364-5242

ELLIOTSBURG  
WAYNE FREEMAN • 717-582-2397

HALIFAX  
BETHTEL FARMS, KENNETH  
BECHTEL • 717-896-8314

KINTNERSVILLE  
WAYNE LITZENBERGER  
• 610-847-5563

KUNKLETOWN  
JEFFREY BORGER • 610-381-3785

LEBANON  
CLARENCE MULL • 717-865-2037

LEWISBURG  
AARON MARTIN • 717-524-2952

LITITZ  
ELVIN HURSH • 717-733-3538

MANCHESTER  
ANIMAL MEDIC • 717-266-5611

MANHEIM  
ARTHUR AUKER • 717-665-6627

RICHFIELD  
SAMUEL KNOUSE • 717-463-2885

SALEM  
DONALD EMEL • 609-769-1577

THOMPSONTOWN  
ROGER SANER • 717-535-5307

WYALUSING  
ANDY CAMPBELL • 717-363-2133



America's  
down to earth  
seed company