



1999 Ford F350 4x2 Crew Cab Dually, Loaded, Diesel, Automatic Eclipse Conversion.

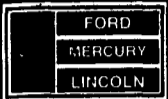
1999 Ford F250 Super Cab 4x4 XLT, V8, AT, Ready to go.



TRUCKS & MORE TRUCKS

All Ready For Immediate Delivery At Prices That will Make You Smile!

Unless the Chapman Emblem is on Your Car or Truck - Don't Forget to Buy Your Truck!



LEBANON



20th & CUMBERLAND STS - RT 422 WEST

9-9 DAILY 9-5 SATURDAY • CHAPMAN HOTLINE (717) 272-7671 OR 933-5293

USED TRUCKS



95 Chevy 2500 Cheyenne 350 V8, AT, A/C, AM/FM Cassette, Cruise, Tilt, 8600 GVW, 4 10 Lid, Slip Rear, PA 1-Owner Truck 15 000 Mi., Lt. Blue **\$15,900**



96 GMC 2500 SLE 4x2 454 Vortec eng., AT, AC, p wds, p dls, cruise, tilt, AM/FM Cass. CD Player p seat, 8600 GVW, 3 73 limited slip rear, 3,600 miles, black like new **\$20,500**



94 Chevy 2500 Cheyenne 4x4, 350 Fuel Injected, 5 Sp. A/C, AM/FM, Sliding Rear Window, 8600 GVW, 3 73 Ltd. Slip Rear, Maroon 43 000 Mi **\$15,900**



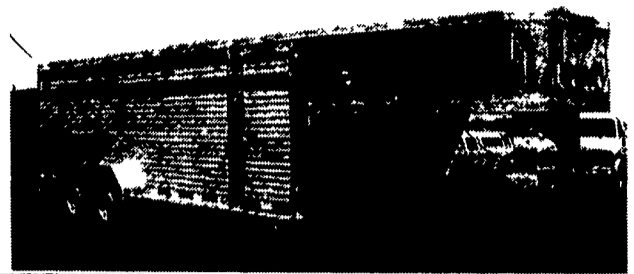
96 Ford F-250 Super Cab, XL 4x4 351 F1 Eng. 5 Speed, AC, AM FM Cass Dual Tanks 8800 GVW, 4 10 Rear PA One Owner 53 000 Miles Dk Green **\$18,900**

MARTIN'S AUTO SALES
1025 W. Main St. New Holland, PA 17557
(717) 656-6621



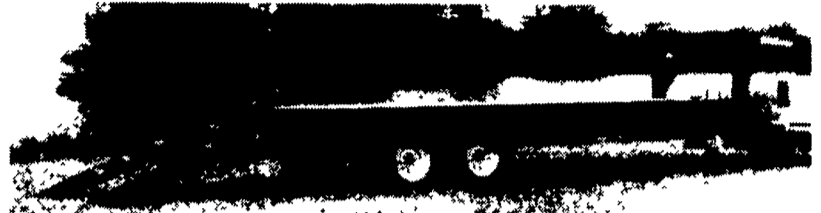
25th ANNIVERSARY LIMITED EDITION

Model 8100SA
7'x20'
#14 of 25

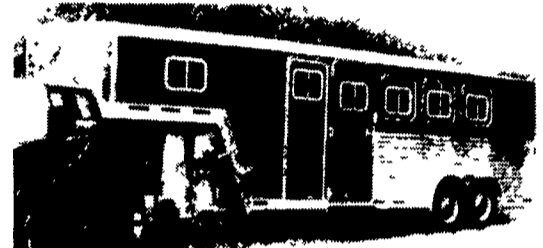


ECONOLITE STEEL FLATBED

Model 5595
8'X24'
Steel Flatbed
w/4' Flip-Up Beavertail



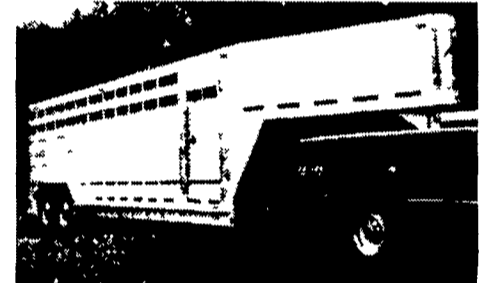
Model 9418 - 2 Horse Side By Side with Walk-Thru Manger to 4' Dressing Room



MODEL 8546 - 3 Horse



Econolite Enclosed Utility Trailer
6x10 & 6x12 In Stock



Model 8110 7'x24' All Aluminum Livestock Trailer with V Nose. Also Available With 5' Nose



4161 Oregon Pike, Ephrata, PA 17522

Chevrolet • Oldsmobile • Geo

717-627-1220 or 717-859-7700

AT THE BROWNSTOWN EXIT OF RT. 222

"CLEANEST TRUCKS AROUND"



1995 Int. 4700 C&C, DT 466, 7 Spd. Trans., 28,960 GVW, Hyd Brakes, 236 WB, 168 C to A, Custom Cab **\$22,500**



1992 Int. 4900 C&C, DT 466, 195 HP, 7 Spd. Trans, 33,000 GVW, Air Brakes, PS, 236" WB, 168 C to A **\$19,500**



1986 INT. S1600 C&C 7.3L, 5 Sp. Trans, Hyd Brakes, Cto A 138, W.B. 208 **\$9,500**



(2) 1994 Ford LN8000 C&C, 8 3 Cummins, 210 HP, 6 Sp. Trans, Air Brakes, PS, AC, 222" WB, 156" C to A, 32,700 GVW **\$25,500/Ea.**



1988 Ford LN8000 C&C, 7.8L Diesel, 240 HP, 6 Spd Trans., Custom Cab, Air Brakes, PS, 33,000 GVW, WB 204", C to A 140" **\$15,500**



1992 Ford LN8000 C&C, 7.8L Diesel, 210 HP, 6 Spd Trans, Custom Cab, PS, Air Brakes, A/C, 33,000 GVW, WB 246", C to A 180" **\$20,500**



1984 Ford LN8000 C&C 3208T, 225 HP, 5 Sp., Trans, 2 Sp. Rear, Air Brakes, PS, Custom Cab, 204" WB, 140" C to A 35,000 GVW **\$14,500**



1994 Ford LN8000 w/10' Dump, 225 HP Cummins, 5 Spd Trans, 2 Sp Rear, PS, AB, A/C, Pintle Hook, 33,000 GVW, 42,000 Miles, Like New, Set Up For Hauling Black Top **\$42,500**



1979 Ford LN8000 New 10' Dump, 3208 Cat 210, 5 Spd. Trans, 2 Spd. Rear, 35,000 GVW, Air Brakes, PS, Custom Cab **\$13,500**



1994 Int. 4900 DT 466, 195 HP, C&C, 5 Spd. Trans, Hyd. Brakes, 25,500 GVW, 218 W.B. 150 C to A, PS, AC **\$25,500**



1995 Ford LNT 9000 C&C 3306 Cat, 300 HP, 9 Sp Trans, PS, Air Brakes, A/C, GVW 52 000 WB 274" C to A 210" **\$42,500**



AL HAMILTON MANAGEMENT COMPANY

Used Medium & Heavy Duty Trucks

P.O. Box 157 • 55 Doe Run Road • Manheim, PA 17545

Phone: 717-665-7145 • Fax 717-665-2137