



3 1999 F-350 4x4 DRW Crew Cabs
Power Stroke Diesel XLTs.

Also Available:

'99 F-350 Crew Cab 4x4 SRW Powerstroke

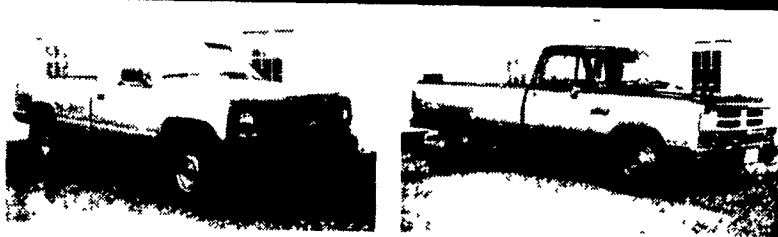
'99 F-350 Supercab 4x4 DRW Diesel XLT

METZLER AUTO SALES

Portage, PA

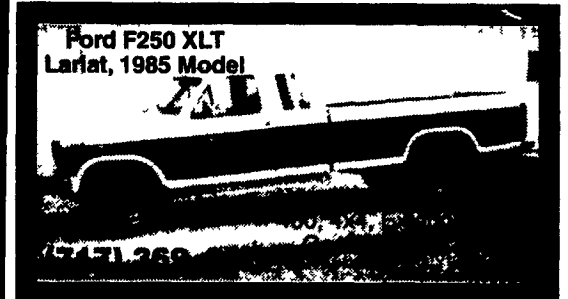
814-793-3725

Landis **AUTO BODY & SALES**
3394 Division Hwy
New Holland, PA • 717-355-0614



91 CHEVY CHEYENNE
Z10 4x4, 4.3 5 Spd., PS, PB,
82,500 Miles
\$7,895

89 DODGE D350
Cummins Diesel, AT, PS, PB,
A/C, PW, PL, 8700 GVW,
72,000 Mi.
\$8,995



Ford F250 XLT
Lariat, 1985 Model



- 98 Chevy 3500 Express LS, 12 Pass., Gray, 350 V-8, AT, AM/FM/CAS, PW, PL, CC, Tilt, Dual AC, Airbags, 33,873 Mi. **\$20,900**
- 97 GMC 1500 Sierra SLE Ext.-Cab 4x4, Green, 350 V-8, AT, AM/FM/CAS, AC, PW, PL, CC, Tilt, Keyless Entry, Pwr Seat, Airbags, 25,154 Mi. **\$23,900**
- 97 Ford F-150 "Off Road" 4x4 Stepside, Black, 4.6 V-8, 5 sp., AM/FM/CAS, AC, PW, PL, CC, Tilt, Airbags, 38,429 Mi. **\$17,900**
- 97 Ford Clubwagon XLT, 8 Pass., Green, 4.6 V-8, AT, AM/FM/CAS, PW, PL, CC, Tilt, Dual AC, Airbags, 35,441 Mi. **\$17,900**
- 96 GMC Sonoma SLS 4x4, Green, 4.3 V-6, 5 sp., AM/FM/CAS, AC, CC, Tilt, Airbag, 15,416 Mi. **\$12,600**
- 95 GMC Safari SLT AWD, 8 Pass, Blue, 4.3 V-6, AT, AM/FM/CAS, PW, PL, CC, Tilt, Dual-AC, Pwr-Seat, Keyless Entry, Sunroof, 83,856 Mi. **\$11,500**
- 94 Isuzu Rodeo 4 dr 4x4, Green, V-6 5 sp., AM/FM/CAS, AC, PW, PL, CC, Tilt, 58,049 Mi. **\$13,600**
- 93 Jeep Wrangler 4x4 Soft Top, Teal, 4.0 6 cyl, AT, Tilt, Western/Power Angle/Plow, 84,103 Mi. **\$9,600**
- 93 GMC Safari XT SLX 8 Pass., Blue, 4.3 V-6, AT, AM/FM/CAS, AC, PW, PL, CC, Tilt, Wheelchair Lift, 22,866 Mi. **\$10,900**
- 91 Ford Explorer XL 4x4, 2 dr., Red, 4.0 V-6, 5 sp., AM/FM/ST, AC, 123,164 Mi. **\$5,900**
- 90 Ford E-150 Catalina Coachmen MTRH, Beige, 460 V-8, AT, AC, CC, 109,762 Mi. **\$13,500**

Brubaker's Auto Sales
Myerstown, PA
717-866-5237



HOSTETLER
Truck Bodies & Trailers
717-667-3921

Milroy, PA - Located between Lewistown
And State College on Rt. 322 in PA.



25' Montz Gooseneck Flatbed, Adj. Dovetail, Deck Over Neck, 14,000# GVW, Triple Ramps
\$5,250



Dump Trailers
5'x8' Single Axle 5000# GVW **\$2,650**
6'x10' Tandem Axle 7000# GVW **\$3,495**
6'x10' Tandem Axle 10,000# GVW **\$3,655**

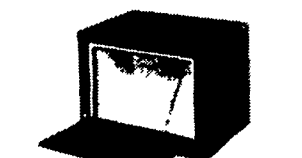
Financing & Leasing Available



Grain Bodies, Removable Sides, Various Rears Available, With or Without Hoist 16" w/40" Sides Not Installed
\$2,550



Used 8' Eby Pick Up Truck Cap, Drop Down Rear Door, Roll Up Rear Door
\$1,795



Tool Boxes, 36"x18"x18" **\$162**
24"x18"x18" **\$146** 42"x18"x18" **\$169**
30"x18"x18" **\$156** 48"x18"x18" **\$178**



18' Deck Over Trailer, 16' Flat 2' Dovetail with 5' Ramps, 10,000 Lg GVW, Adj Coupler
\$3,395



Skid Loader Trailers, 82" Between the Fenders, 10,000# GVW
14' Long **\$2,495**
16' Long **\$2,595**
18' Long **\$2,760**



New Design Moritz Livestock Trailers Semi Round Front, New Sides and Rear
6'x16 7000# GVW **\$3,360**
6'8" x 16 Long 7000# GVW **\$3,675**



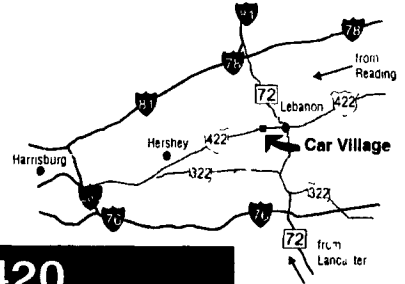
Eby Trailers In Stock, Both Gooseneck & Bumper Pull
CALL FOR PRICES AND AVAILABILITY

Business Hours:
Mon.-Fri. 9 to 9;
Sat. 9-4

RTE. 422 WEST
LEBANON, PA

(Across From Lebanon Valley Mall)

CAR VILLAGE
HEAVY DUTY TRUCKS



PHONE 717-274-2000 Toll Free 1-800-650-1420



4x4 DUALY, '96 DODGE CLUB CAB DUALY
Real Nice, Real Clean, Auto Cummins, Turbo Diesel, A/C, All Power Option, H.D. Tow Pkg., CD Player, 40,000 Miles



4x4 PLAIN JANE
\$19,900
'95 Chevy K2500 4x4 Supercab
Cheyenne work pkg., 6.5 turbo AT, heavy duty 3/4 ton, only 67,000 miles



5 SP CLUB CAB, '96 DODGE 2500 4x4
Trailer Tow Pkg, Cummins Turbo Diesel, 5 Sp, A/C, Very Clean Inside & Out, Only 41,000 Miles



5 SP, DIESEL '96 DODGE 2500 4x4
Heavy Duty 3/4 Ton, Cummins Turbo Diesel, 5 Sp, A/C, Trailer Tow Pkg, Vinyl Floor Mat, Only 19,000 Miles, Real Clean



5 SP, DIESEL SUPER CAB
'97 FORD F250 4x4 HEAVY DUTY
It's Perfect - Like New But Lots Cheaper, Only 15,000 Miles, Powerstroke 5 Sp, A/C, New Tk Warranty



TOW WITH STYLE
'97 FORD F350 CREW CAB DUALY
Very Nice, 24,000 Miles, Powerstroke Diesel, 5 Sp, A/C, 4 10 Gears, Aluminum Wheels, Big Mirrors



'95 FORD F250 4X4
Diesel Power, 4Sp, Trans, Gooseneck & Class 3 Hitches, Vinyl Floor, Great Farm Truck \$7,900



NOTHING FANCY '96 FORD F250 XL HEAVY DUTY 4X4
Runs & Drives Great, 36,000 Miles, Powerstroke Diesel, AT, A/C, Vinyl Floor Mat, Dual Tanks, Great Tk. For The Farm



WORK TRUCK
'94 FORD F250 SUPER CAB 4X4
Heavy Duty, 3/4 Ton, 351 V8, Auto, AC, Rebuilt Trans, with Warranty, Only \$14,900



63,000 00 78 CHEVY C-60
366 Gas V8, 4 Sp, Trans, 2 Spd Axle, 8 25x20 Rubber, 21,000 GVW, NO CDL Required



TOW MACHINE '97 FORD F350 SUPERCAB DUALY
This is One Strong Tk., Powerstroke Diesel, 5 Sp, 4:10 Gears, A/C, Big Mirrors, Gooseneck & Class 3 Hitch, Only 22,000 Miles



PULLING POWER
5 SP, DODGE CLUB CAB DUALYS 4X4
We Have 5 Extra Clean, Low Miles, Very Strong, Very Nice
Call For Details



ALUMINUM FLATBED
'97 FORD SUPER DUTY
Heavy 15,000 GVW Only 18,000 Miles, Powerstroke Diesel, 5Sp, A/C, 12 Ft. Bed, Very, Very Nice



460 - 1 TON BLACK BEAUTY
'95 FORD F350 XLT
Super Clean, Probably The Nicest Anywhere, 460 f1 V8, AT, A/C, Only 31,000 Miles



4x4 SUPER CAB '99 FORD F350 SUPER DUTY XLT, Powerstroke Diesel, AT, A/C, Power Everything, 4 Door Opening, CD Player



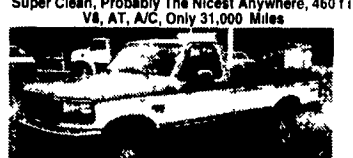
4x4 MECHANIC'S TRUCK '94 FORD F350
Rare Find, But We Got A Nice One, One Owner Trade, 53,000 Miles, Powerstroke Turbo Diesel, 5 Sp., Limited Slip Axle, Very Nice Reading Bar



RACK BODY DUMP
'94 CHEVY H.D. 3500
Heavy 15,000 GVW High Output 6.5 Turbo Diesel, H.D. 5 Sp., A/C, 14 ft. Body, Only 26,000 Clean Miles. Will Sell As Chassis



4 DOORS + 4X4 '97 FORD F350 XLT
Nice & Clean, The Way You Like It, 22,000 Miles, Powerstroke Turbo Diesel AT, A/C, Tow Pkg, New Tk Warranty



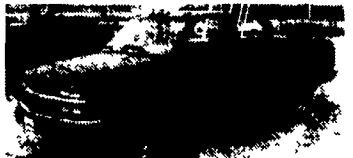
4x4 POWERSTROKE '97 FORD F250 HEAVY DUTY
Nice to Drive, Plenty of Power, What More Do You Need? 8600 GVW, Auto, A/C, Limited Slip 4 10 Gears Only \$23,900



DUMP IT
'96 GMC H.D. 3500
Heavy 15,000 GVW 6.5 Turbo Diesel, 5 Sp., 8 Ft. Hell Dump, Pantli Hitch, Tool Box, 27,000 Miles



WORK TRUCK '97 FORD F350 XL
4 Wheel Drive, Not Fancy Just Pure Truck, 7.3 Powerstroke Diesel, Auto, Solid Front Axle H.D. Suspension 22,000 Real Clean Miles



4x4 CHEVY HEAVY DUTY K2500 \$19,900
High Output 6.5 Turbo Diesel, AT, A/C, Heavy Duty Tow Pkg., 4 Brand New Tires, Only 50,000 Miles, Real Clean



1 TON DIESEL 4WD '95 FORD F350 XLT
Powerstroke turbo diesel, AF, A/C, Dual Tanks, Tow Pkg., Limited Slip 4:10 Gears



\$15,900 5 Sp. Diesel
'92 FORD F250 4X4
Heavy Duty 3/4 Ton, 7.3 Diesel, 5 spd, A/C, Gooseneck Hitch, only 79,000 miles, very nice, clean tk.