

1989 Ford Maxi-Van, (Black) Good Condition. 150,000/Miles. \$3,800. (717)776-7725.

'83-Jeep, CJ-7 Laredo, 6Cyl, 5Spd. 5 Mag/Wheels, 2-Tops. \$3,800. (610)489-0783. Leave Message.

'89 Chevy Cavalier, 2 door, 4 cyl., auto, PS, PB, air, AM-FM cassette, 75,000 miles, new radials, excellent condition, \$2,450. 717-733-2873

CHEVY'S, FORD'S, etc. Cars and trucks. Over 300 vehicles. Every Monday 6:30PM. PUBLIC AND DEALERS. YORK SPRINGS PUBLIC AUTO AUCTION, RT 15, York Springs, PA 1-800-222-2038.

See Our Ad In Today's Auction Section

Over 1000 Vehicles

York Springs Public Auto Auction

## 35 TRUCKS & TRAILERS

18' aluminum Fontaine feed body 4-compartment, good condition, \$2500. 540-929-4488

18' tag-a-long trailer, inspected, good condition, new deck, 10,000 GVWS. Call 717-866-7777

1912 Circle D Deck-Over Gooseneck Trailer. 36'L, Dually Tandem, Wet Axles, Elec. Brakes w/Beaver Tail. 7:30-10:30 (717)949-3769.

1957 Chevy 6500 flatbed dump truck, \$1500. 410-692-5042

1965 Chevy Viking 60 Truck Tilt Cab, 21' Bed, Stock Rack, 8-Cyl. Hi-Lo Range Excellent Condition 85,000-Miles. \$2,500. Augusta County. (540)337-6561.

1965 Ford F750 dump, 9' bed, rebuilt motor, good condition, \$1900 OBO. '76 GMC cab & chassis, 48,000 GVW, 8V-71 Detroit, runs good, \$1800 OBO. 717/739-4650 Sch. Co.

1968 Chevy 3/4 ton dual wheel stake body truck, 350 cu.in. 4-speed, good farm truck, runs good, inspected, good rear tires, \$1500 OBO. 717-739-0038

1969 Trailco aluminum dump trailer, 28' frame, 26' box, 11Rx22 tubless tires, \$4,500 OBO. 717-438-3205

1970 Chevy truck dump w/ grain sides, 26,000 GVW. 717-442-4171

1986 ISUZU DIESEL, 5-Spd., 11,500 GVW, with or without 12-foot Van Body, \$4,900. 1986 Ford E-350, 14-foot Cube Van, V-8 Auto., 90,000 miles, excellent cond., needs motor work, \$1,500. 24-Foot Van Body, Roll-up rear door, large-side door, \$1,200. 12-Foot Van Body, \$350. MARTIN'S USED TRUCKS & EQUIP. (717)299-6200

1986 MACK TRI-AXLE, 350h.p., 9-spd. 20 Front with wide tires, 44 Rears. With or Without 19-1/2ft. heated alum. bed. Bed has auto. tarp. Both are in good condition & make an excellent grain or farm truck. \$27,500 (717)483-6538

1988 F-350 Dually, Diesel, A/T, Clean, Plus 2-Horse Trailer Gooseneck. (610)932-5968.

1988 Ford F-350 dump, 460, 5-speed, limit slip, nice, \$7300. 304-274-3412

1988 Int. 2575, Big Cam 315 Cummins, 50,000 GVW, 30' flatbed, Jake brake, air ride. 717/258-5224.

1971 Int. Loadstar 1600 4WD, V8 5-spd, PS, 21,000 GVW, 23,500 miles, 9' Hercules dump box, 9' snowplow. 610/678-3464.

1972 Autocar all wheel drive tandem axle liquid manure truck, 400hp Detroit engine, less than 200 hrs on rebuild, Allison auto trans, 3500gal vacuum tank w/rebuilt vacuum pump, 4 chisel injectors, very good condition, \$30,000 OBO. 301/842-3829.

1974 JERSEY TRAILER, 18,000 lbs. w/Beaver Tail and Ramp. 3-Axles. (717)721-9866

1976 Mack U model, needs minor work, \$2500. 717/336-7375 No Sunday Calls.

1977 Chevy C60, 14' dump body, new everything! \$4750. 610-353-9663 anytime.

1977 F-350 FORD Stake Body. Runs well, inspected until 4/99. \$2,500 OBO (610)380-1502

1978 Ford 9000 tri-axle, 22' body w/blower, new 350 engine, 13-speed, 46R, 18F, excellent condition, \$19,000 OBO. 315-789-3667

1980 Peterbilt, 359, day cab, 50,000 miles on rebuilt 3406-A Cat, aluminum wheels, w/or without walking floor wetline. Ready to go. \$18,000 OBO. 717-949-2371

1981 Ford F-350 Dually, 351 w/4spd. Sharp Pick-Up! MD Inspected. \$4,900. (410)758-0979.

1984 IH S-1700, gas, hay grain truck, 98,000 miles, \$2900. 610-683-7206

1986 Barrett gooseneck cattle trailer, 24'x8', \$5000. 717/464-3304.

1986 IH Eagle, day cab, 80,000 miles on rebuilt 3406-B Cat, aluminum wheels, Jake, w/or without walking floor wetline, excellent condition, \$25,000 OBO. 717-949-2371

'86 Freightliner Conventional w/22' Flatbed w/ Pintle Hook, 300HP, Cummins. 15-Spd./O/D, Air Ride w/40" Bunk. \$14,500. (717)925-2804.

86 IH 52500 300 Cummins 9-sp., R.R., 22ft flatbed, 32,000 GVW, \$13,500 OBO. 98 Pequea 22ft. bumperpull trailer, Torflex axles, 14,000 GVW, \$3,200 OBO. (814)473-8231

87 F350 crew cab 4x4 diesel, air, new paint, runs strong, high miles, \$8500 OBO. 215/679-2471 anytime.

'88 Ford Ranger XLT, long bed, 4 cylinder, 5 spd, PS, PB, air, AM-FM cassette, new radials, burgundy w/ matching fiberglass cap, 57,000 miles, excellent condition, \$3,975. 717-733-2873

1988 Peterbilt truck, \$11,000 OBO. 717/859-6601 days, 717/336-6004 evenings.

1991 FREIGHTLINER, CONVENTIONAL CAB, w/ Sleeper. Exc. Cond., Rebuilt 350 Cummins w/Jake. \$18,000 OBO. Ask for Ben. (410)679-8298. Also, 1984 Ty-Brook Alum. Dump Trailer. Exc. Cond., new Cyl. \$12,000 OBO. See Ben.

1992 Ford Super Duty XLT, 12' steel flatbed, 460, 5-speed, 15,000#, air, set-up for towing, 1-owner, garaged kept, \$14,900. 717-345-4882

1994 GMC Topkick LoPro 6.6 turbo, 3116 Cat, Allison auto, AC, 60,000 miles, 40" bunk, \$24,500. 717/649-6436.

1995 Ford F-350XL, 4x4, "Powerstroke" diesel, 4:10 rears, 5sp, red, class IV hitch, bedliner, 35x12.5 BFG mod-terrains, 44,500 miles, \$19,000 OBO. 610-682-2894

1996 Chevy crew cab dually, 6.5 turbo diesel, 17,000 miles, red, 2WD, loaded, excellent condition, \$24,900. 717/436-8792.

1997 Ford F250 4X4, Power Stroke Diesel, extended cab, gooseneck towing package, 27,000 miles. Mt Aetna Auto Sales 717-933-8060.

2-Horse trailer w/tack room, fair condition, \$500 OBO. 717/336-7846.

'69 Ford F950 w/11' Root snowplow, cinder spreader, new clutch, only 49K, \$2800 OBO. 610-582-3629

'74 Mack RD tandem axle, 13' steel bed, 237 engine, pintle hitch, air to back, hard nose, new rubber, \$11,000. 717-753-3391

'75 IH Pacestar 5000, tri-axle, 318 Detroit, 44,000 rears, 13 speed RR, 18' aluminum box, good rubber, new trans, \$17,000. 717-753-3391

'77 Dodge bus 400, high gears, drive train, good condition, \$750 OBO. 717-532-7261

'78 Ford Truck 23,000 GVW, 2 Yr Old Engine & Radiator, 3020 JD Power-shift. (717)933-5224.

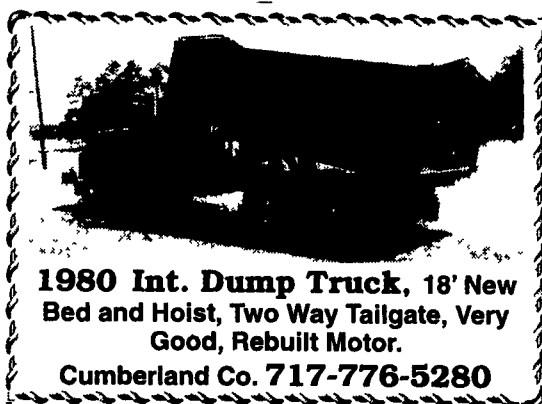
'79 CL9000, 400 Cummins, 13 speed Roadranger, wetline, 20" aluminum Budds, inspected, \$5000 OBO. '75 LN600 flatbed dump, 391 engine, 5+2 speed, \$3000 OBO. 12-cylinder Deutz engine, low hrs., \$2800 OBO. 215-234-0587

85 BUDD Van Trailer, 48-ft.x96-in., good brakes & tires, roll-up door, auto slacks, \$4,700 (610)374-8401

92 Ford F250 4X4, 7.3 diesel, AT, DMI rear bumper, very good condition \$9800. (908)359-5934.

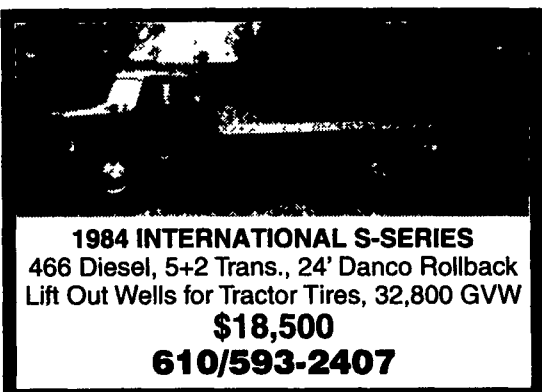
'90 Ford F150, 4x4, 300 EFI, 5 spd, PS, PB, AM-FM, dual tanks, 66,000 one owner miles, 2 tone blue, new radials, excellent condition, \$8,300. 717-733-2873

'92 Ford XL F150 super cab, 300 EFI, 5 spd, PS, PB, AM-FM, dual tanks, 50,000 one owner miles, burgundy, \$8,600. 717-733-2873



1980 Int. Dump Truck, 18' New Bed and Hoist, Two Way Tailgate, Very Good, Rebuilt Motor.

Cumberland Co. 717-776-5280



1984 INTERNATIONAL S-SERIES 466 Diesel, 5+2 Trans., 24' Danco Rollback Lift Out Wells for Tractor Tires, 32,800 GVW \$18,500 610/593-2407



1988 FORD F150 5 sp., V-8, 2-wheel drive, high miles, loaded, Lanat cab. \$2,800 717/838-8222



1990 Dorsey 40' Aluminum Frameless Dump Trailer, 10' Spread, Airride \$15,500 Weavers Truck & Equipment Sales 717/523-9598

**ULTIMATE spray-on linings**

PROTECT YOUR INVESTMENT

- Spray-on up to 1/4" thick
- Durable/Anti-acid truck bed liner
- Chemical Resistant
- Lifetime Warranty
- Multiple Colors
- Rust/Corrosion resistant

Rohrer Bus Service  
1515 State Road, P.O. Box 100  
Duncannon, PA 17020  
1 800 735-2400 Fax: (717) 957-4884  
Visit Us At: www.rohrerbus.com

**FOR SALE**

International S-2500 Tandem Axle Rollback, 26' Jerr Dann, Bed, 290 Cummins, 13-Speed RR, Needs Bed Work \$22,500 717-866-2130 Ask For Ken

'91 Int. 7.3 engine, auto trans, air ride, rear compactor plus side dump bins \$9,500 610-944-9871 after 5 pm

**CASH FOR USED DIESEL TRUCKS!**

WE NEED 1/4 TON TO ONE TON:

- FORD DIESELS
- SUPERCABS
- CREW CABS
- DODGE CUMMINS
- 2WD OR 4X4
- DUALIES
- DUMPS
- UTILITY BODY
- FLAT BEDS
- CAB & CHASSIS
- SUPER DUTIES

LOW MILEAGE ONLY PLEASE

Before you sell or trade your diesel in somewhere else for LESS. CALL US! We Pay More for Used Diesel Trucks Than Anyone. TRY US!

717-949-2000 OR 610-678-3243 Ask for Smokey or Kay

**KELLER BROS.** RD 7, Box 405 Lebanon, PA 17042

**6x6 INTERNATIONAL BRIDGE TRUCKS**

All wheel drive 6 cyl. engine, 5 speed transmission 2 speed transfer case double frame, 1400/20 flotation tires, hard top cab, heater, front winch, P.S. air brakes, 20 ft bed. Fully reconditioned. \$14,850 814-834-1018 PA

1991 Freightliner with 60 Series Detroit, 11.1 liter, 350 h p, Springride, Tandem, Air ride cab, 36" sleeper, 11 1-22 5 tires on Bud Wheels Bergen rubber better 60% all around \$12,500 Have 42" Kenworth sleeper. \$500 (215) 822-3516

95 Dodge 3500 4x4 Dually Pickup Turbo Diesel, A/T, Laramie SLT, Loaded, Damage on Right Front \$11,900 Also Have 96 Dodge 2500 Extra Cab 4x4, Front Damage Turbo Diesel, A/T \$8,500 **THOMPSON MOTORS** 610/346-8588 Fax on Demand Inventory List 610/346-8890

Truck-Trailer 42' Drop Deck with White Single Axle \$5,000 717/838-8222

**NUSSBAUM WRECKERS & ROLLBACKS**

- 1985 Int'l S-1900 Jerr-Dan 24ft. Super 10 Rollback with Hydraulic Rear Stabilizer, D-T 466 5 speed, New PA Inspection.....\$16,900
- 1995 GMC HD-3500 Aluminum Rollback with Independent Wheel Lift, 454, V-8, Auto Trans., A/C.....\$19,900
- 1981 F-350 Ford Holmes 440 Wrecker..\$3,950

(717) 684-0189