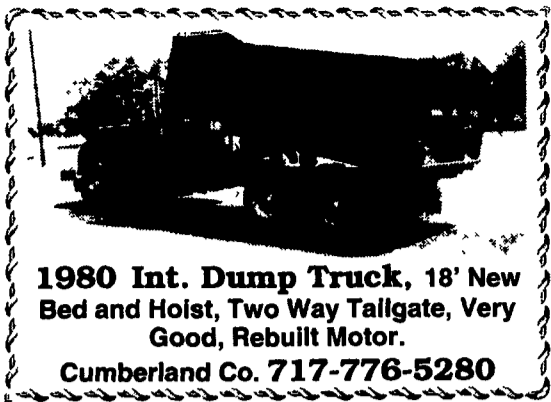


1994 Chevy Diesel Turbo, 5 Speed, 12,000 GVW, With Custom Hwey Alum Back Pack Tool Box & 9 Ft. Alum Landscapers' Dump Bed, PB., PS., Air, AM-FM Phone

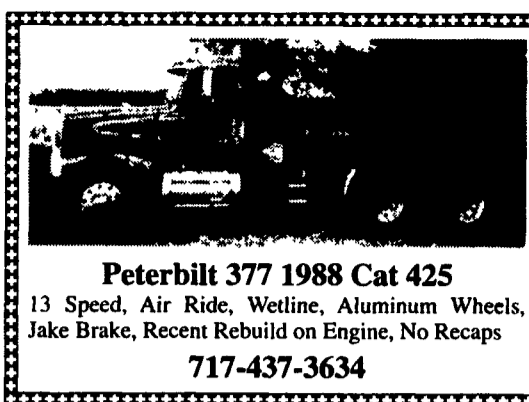
Boss Snow Plow
9FT., 6-Way Byers Slide-In Salt Spreader, W/In-Cab Controls, All In Excellent Contition \$23,900 Neg. Lancaster Co. 717/872-0755



1980 International S-2500, Detroit V6, RTO 958 L L. Rockwell Rear, G.V.W. 29,900, W.B. 204, 35,000 miles, tank odorless sanitary cleaner by Gorman Rupp, Deutz diesel, self priming pump, 3" outlets, like new, \$17,500. Blair County 814/942-3821 Eves.



1980 Int. Dump Truck, 18' New Bed and Hoist, Two Way Tailgate, Very Good, Rebuilt Motor.
Cumberland Co. 717-776-5280



Peterbilt 377 1988 Cat 425
13 Speed, Air Ride, Wetline, Aluminum Wheels, Jake Brake, Recent Rebuild on Engine, No Recaps
717-437-3634

**WE HAVE GAS AND DIESEL NOW!!!
Call Keith For Yours!**



82 FORD F700
23,000# GVW, 370 4V Gas, 5 Spd., 22 Morgan Van with 2000# Liftgate, Low Miles, A/C



99 ISUZU FTR
6 Speed, 200 HP. Call For Specs



93 CHEV G30 HD
14' Body, A/C, Shelved, Low Miles



98 & 99 ISUZU NPR
NPR-Gas, NQR & Frt Models In Stock Call Keith For Yours.



89 MACK R688ST
E6350, T2090 Trans 12FA & 38RA, 187" WB, Jake, 11R22.5 on Spokes, A/C, White



92 MACK CH613
60" Double Bunk; E7350 VMAC, Fuller 9-spd, Lo Pro 22.5 on Disc (Alum Front), Air Ride Nice Truck

Berks, Lebanon & Schuylkill Counties **ONLY AUTHORIZED** Isuzu Dealer

"0" DOWN LEASE PROGRAM CONTINUES THROUGH 12/31/98

ISUZU TRUCK OF READING

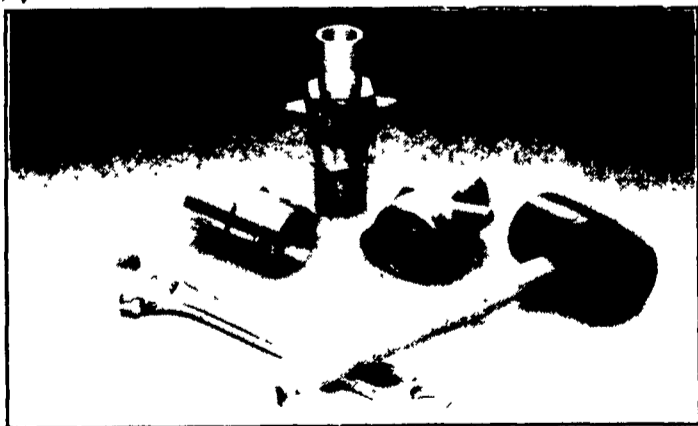
READING MACK DIST.

800-485-2556

4226 Pottsville Pike, Reading, PA

**ATTENTION TRUCKERS:
NEWS FROM **FASTER** USA INC.**

NEW FORGED WING NUT COUPLING
Stronger, More Durable



NEW IMPROVED WING NUT DESIGN

- Stronger and more durable providing longer service life.
- Interchanges with industry standard couplings.
- Resists breaking associated with castings
- Hammer, Wrench, or Hand tighten.
- Eliminates need for special nuts.

Beiler Hydraulics
HYDRAULICS • PNEUMATICS • POWER TRANSMISSIONS
440 Concrete Ave • Leola PA 17540 • 717-656-4878 • Fax 717-656-4682

CHEVROLET GEO BUICK Oldsmobile PONTIAC CHEVY TRUCKS
OUTTEN
TOTAL TRANSPORTATION CENTER



96 GMC K1500 EXT. CAB 4x4, SLE Pkg, AT, A/C, V8, Nicely Equipped, 11,500 Miles
GM Certified - Ask For Details
\$26,995



97 GMC K3500 4X4 CREW CAB DUALY
SLT Sierra, 454 V8, Black, Most Options
GM Certified - Ask for Details



97 CHEV K1500 4X4
3rd Dr., Ext. Cab, 350 V8, Silverado, Most Options, 26,000 Miles
\$25,995



98 CHEV K2500 PLOW TRUCK
4x4, 350 Vortec, A/C
MSRP \$28,961
Sale Price **\$25,700**



98 CHEV K3500 STAKE BODY TRUCK
4x4, 350 V8, AT, MSRP \$30,521
Sale Price **\$25,257**



84 FORD E350 JAMBORIE MOTOR HOME
460 V8, AT, PS, PB, A/C, Real Clean, Must See
\$12,995

Outten Hamburg Rt. 61, Hamburg PA
1-800-451-2333 • 610-562-2216

CHEVROLET GMC

Sutliff

GM PARTS
GENUINE GM PARTS FOR ALL GM VEHICLES
800-932-0284

Free Delivery Routes In 12 Counties In Central PA
Call For Specifics

25 PARTS PROFESSIONALS TO SERVE YOU
ENGINES - TRANSMISSIONS
A.C. DELCO - SHEET METAL
ALL IN STOCK AND PRICED RIGHT
IF YOU NEED GM PARTS
WE'VE GOT WHAT YOU NEED

SUTLIFF GM PARTS

13th & Paxton
Harrisburg, PA



We Want Your Business

A **GM** Goodwrench Service Plus Dealer

The Plus means better.

CHEVY TRUCK

OLDS
BUICK

CADILLAC
PONTIAC