

BEHRENS & KOLLER FORD
 1000 South Centre St. Lancaster, PA 17602

98 F-150 S/Cab 4x4 XLT, 19K Miles.....	\$24,695	95 F-150 4X2, S/CAB, 351, 54K.....	\$15,795
97 Expedition, XLT, F&R A/C, 32K Miles..	\$27,595	95 Dakota King Cab 4x4.....	\$16,295
97 F-150 S/Cab 4x4 XLT, 24K Miles.....	\$23,995	95 Ranger, 6 Cyl., Aut., 22K.....	\$10,595
97 Cherokee Sport 4x4, 23K Miles.....	\$17,595	95 F-350 Crew Cab, Diesel.....	\$15,500
96 Explorer XLT, 36K.....	\$21,295	92 F-250, Tool Bins, Aut.....	\$8,800
96 Explorer XL, 23K.....	\$20,595	91 F-250, Aut.....	\$7,900
96 Explorer, Moon Roof, Leather, 36K.....	\$22,995	86 Aerostar.....	\$2,900

Beshore & Koller Ford

4370 North George St.

5 Miles North of Route 30 - Manchester, PA

Hours: Monday-Thursday 8:00 am - 8:30 pm Friday 8-6, Sat. 8:30-2:00

Woodcrest Motors

SPECIALIZING IN TRUCKS & VANS

1200 North Reading Rd., (Rt. 272) Stevens, (Lancaster Co.) PA 17578
 717-336-3130



92 CHEVY 3500 DUMP
 4x4, 5 Speed, 350 V8



97 FORD F150 EXT. CAB XLT, 4 2. AT,
 Most Options, 3-Door, 8,000 Miles



86 FORD F250 4X4
 V8, 4 Speed, PS, PB



94 CHEV KODIAK DUMP 10 ft
 Dump Body, 3116 CAT, 6-spd, A/C
 25,700 GVW, 41,000 Miles



95 CHEV S-10 LS, 4x4
 4 3 V6, 5-Speed, 50,000 Miles, Red



89 FORD F450 SUPER DUTY ROLL
 BACK 7 3 Diesel, 5-Speed, A/C

ALL STEEL REPLACEMENT TRUCK BED

7'X70"W or 80"W
 8 1/2' Lx80"W or 90"W
 10'Lx8"W, 12'Lx8"W

Also Available in 4'x7' and 4'x8'
5'x8' Starting at \$650

UTILITY (TILT OR GATE MODEL) SIZES:
 5'x8', 5'x10' 2000# GVW - 5'x10'
 6'5"x12', 3000# GVW

UTILITY WITH GATE-SIZES:
 16'x77", 18'x77", 7,000# GVW

ALSO 84" WIDE!

CAR HAULER TRAILER:
 16'x78" & 18'x78" Includes 5' Beavertail
 7,000 lb. GVW 4' self storing ramps

Quality Trailers Built Locally By "PA International"

Car Dollie

Sale \$795

New 1998 Steel **Single axle**
 Call for sizes

Ford Super Duty
 2LT w/Flatbed
 \$14,500

Used 1997 Ford

Over 200 Trailers In Stock
 Starting At \$475.00
 T-Plates
DEALERS WANTED

Highway Hydraulic Dump BRI-MAR

5'x8', 3000# \$2,150
 5'x8', 5000# \$2,495
 6'x10', 7,000# \$3,195
 6'x10', 10,000# \$3,495
 7'x12', 10,000# \$3,995

FREE BATTERY

LOW PROFILE DUMP TRAILERS BRI-MAR

6'x10' GVW low profile dump trailers w/ landscape gate

7,000# \$3,495
 10,000# \$3,895

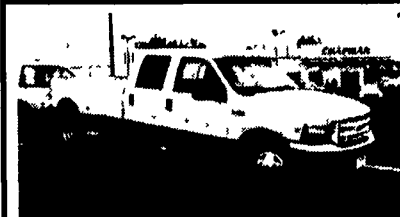
FREE BATTERY

Starting At \$3995 w/4' Adj.

GOOSENECK SIZES: 20'x8' 12,000# or 14,000# GVW, 24'x8' 14,000# GVW

Low Profile construction 16'x77" & 18'x77" 10,000 # GVW

DECK-OVER CONSTRUCTION 14'x7' With Tail, 3000# or 4000# GVW 16'x8' With Tail, 7000# GVW 20'x8' w/Tail 10,000# GVW \$3,295



1999 Ford F350 4x2 Crew Cab Dually, Loaded, Diesel, Automatic Eclipse Conversion.



1999 Ford F250 Super Cab 4x4 XLT, V8, AT, Ready to go.



TRUCKS & MORE TRUCKS

All Ready For Immediate Delivery At Prices That will Make You Smile!

Washes the Chapman Emblem on Your Car or Truck - You Probably Paid Too Much!

FORD MERCURY LINCOLN

CHAPMAN LEBANON

A Division of THE CHAPMAN AUTO GROUP

20th & CUMBERLAND STS. - RT. 422 WEST

9-9 DAILY 9-5 SATURDAY • CHAPMAN HOTLINE (717) 272-7671 OR 533-5293

KUTZ FARM EQUIPMENT, INC.
 Pine Grove, PA (717) 345-4882 FAX (717) 345-2881

8 AM-5 PM Monday To Friday
 8 AM-12 Saturday Or By Appointment

AUTOMATIC TRANS.

1995 FREIGHTLINER, Cummins 5.9 @ 190 HP, Automatic Trans., P/S, A/C, 24' Body \$24,900

DUTCHMAN'S TRUCK SERVICE, INC.
 2355 N. Reading Rd., P.O. Box 325
 Penna. Turnpike Exit 21 Denver, Pennsylvania 17517
PHONE (717) 336-2867 or (800) 769-9887

91 Volvo WG64T Wet Line, All Volvo Components VE12-360CE, VT 1309 Trans, 3.36 Rears, 12FA38RA T-Ride, 11R22 5, Engine Brake, 571,000 Miles On Truck, 525,000 Inframe, Intercooler, Cam Turbo, Heads, Injectors, Oil & Water Pump, \$18,287 Rebuilding Since 12/96 \$19,500 OBO

92 Peerless @ Keith II Floor Slats, Good Can Still Be Flipped, Sliding Tandem, Barn Doors, Good Tarp, Brakes & Drums (80%), 11R24 5 (75%) On Disc, 48'x96" \$22,500 OBO

1994 Freightliner FLD120 Wet Line, Set Back Axle, Cummins N14-430E Electronic Jacobs Brake, Fuller RTX-14609B 9 Speed, 4.10 Rears, 11R24 5 Aluminum Wheels, 215" Wheelbase Sleeper 44" Twin 120 Gal Tanks Split For Hydraulics, Air Ride Suspension And Cab \$37,500

1977 Int C/O Wet Line 13 Spd., Detroit, Great Farm Truck or Yard Truck \$3,000 Firm

1983 380B Case Loader Only 680 Hrs. Like new, Used To Rotary Mow, Rear 540 PTO, Canopy ROPS, Hydraulics, Woods 8' Blade Mower, Will Separate Mower for \$1,300 \$12,500

1988 Barbell Food Grade Insulated, Rear Discharge Pump Extra \$3,000 \$24,000

1979 GMC Big Wheel Flotation sludge truck, 1500 gal, injectors, 13,000 miles, gas, automatic, excel cond \$12,000

ELGIN CARTAGE, INC.

898 Old 22 Lenhartsville, PA 19534 1-800-776-4383 • 610-756-4343