

1 FARM EQUIPMENT

NI 325 2RN w/327 Husking Bed. Field ready. \$3,800. Moses Petersheim, 563 Mt. Pleasant Rd., Honey Brook (610)273-3538

NI 323 Compicker & (2) Gravity Wagons.; IH 500 Dual Wheel Truck. Ralph Burgess (717)746-3177.

NI 323 Picker, real nice, \$1950; NI 323 picker, good, \$1275; Int. 10' transport disc. \$775. 610/562-4464.

NH snapper head 1890EN3 for 1890, 1895 harvester, good condition, \$1200. 315/389-4357.

NH TR85, 4WD combine, nice condition. 908-537-6130

NI 2RW Compicker w/12 Row Husking Bed. (717)658-7493

WANT: Farmall Cubs and lowboys in any condition; also buying Cub attachments. Phone 1(888)496-9120.

West Braunwicz Forklift, Boom Extend-30', Needs Some Motor Work. \$3,500 / o b o . (717)385-4613.

Wick 2800 gallon liquid manure spreader, fair condition. 717-752-3759

WOODS 121 10' pull type mower, one owner, \$2,200. 410-833-9091

Woods 6' finishing mower, model RM306, \$450. 410-398-3733

Lancaster Farming, Saturday, October 24, 1998-C17

WHITE 2-135, CAH, dual hyd., 540/1000, cold air, \$9,500. 410-833-9091

WHITE 2-135, 135 hp, 3,700 original hrs., 1,500 hrs. on OH, exceptional condition, \$11,500. 410-833-9091

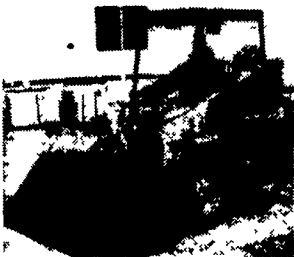
White 6100 No-Till Com-Planter, 1995 Model, 6RN, Deluxe Monitor, Lq. Fer/ Insect. \$11,200. (301)797-1928.

White 2-150, 150hp, cab, air, over under hydraulic transmission, many new parts, \$5500. Lebanon 717-279-7455

Come & Choose A Preowned Skid Loader And Machines At Clearance Pricing - Now Is The Time To Make Your Move! See Binkley & Hurst Bros. Today For Your Choice!

Ask About Elite Credit Financing Plans

Case 1835 B Diesel Uniloader. Was Serviced. Ready To Work!



UT 3923
Almost New 67" High Capacity Bucket with Quick Attach. Lights 90% New 10 00x16 5 Rubber - \$7,950

1996 Case 1840 50 HP Cummins Diesel



UT 4091
Loaded with Fine Features New 73" Wide Utility Bucket, Self-Leveling Loader, Aux Hyd., Very Good - \$12,900

Gehl 4610 Diesel Perkins 44 HP with Self Leveling Loader



UT 3837
65" Material Bucket with Self-Leveling Loader, New 10-00x16.5 Lug Tires, Serviced and Ready to Work. Was \$8,900 Now \$7,950

Excellent Cond. Cat 963 Crawler Loader (Sharp)



1982 3304 Cat 150 HP, Hydrostatic Drive Tested in Very Good Cond., 90% New U C , 72" Gauge, Overall Width 91" Wide, 18" Wide Pads Like New, 92" Wide Bucket, 2 6 Yd with New Teeth, Machine Weight Approx 21 Ton, Good Paint and Sheet Metal. **Ready For Work!** Only \$52,800 - Come & Run Quick Elite Financing Plans

Very Clean Case 1845 Gas with New Engine Overhaul



UT 4042
4 New Tires, Good 73" Utility Large Material Bucket **Only \$6,900**

1988 Case 1835 C Gas Uniloader, Very Clean



UT 4071
Aux Hyd., New 10 00x16 5 Lug Tires, Lights, 60" Material Bucket - \$7,900

Case 1835 B Diesel Uniloader



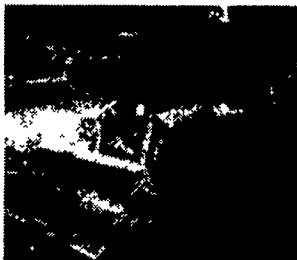
UT 3918
Lowered Cage, 70" Utility Bucket, Good Machine, Was \$8,950 No Reasonable Offer Refused

Don't Miss This Locally Owned 1991 Case IH Magnum 7120



2WD Cab Air Heater, Power Shift with 18.4x42 Radial Rears and 14Lx16.1 Front Tires, Dyno Tested 178 HP, 540-1000 PTO. **Ask About Low Rate Financing!**

1987 Case 1835 B Diesel Uniloader



UT 3997
63" Gravel Bucket, Serviced Including Drive Line No Reasonable Offer Refused.

1986 Case 1840 Diesel Uniloader, 51 HP



UT 4026
72" Bucket, New Tires, Aux Hyd - Only \$12,900 Serviced, Ready To Work

Case 1840 Uniloader



UT 4093
Lowered Cage with Large High Capacity Bucket

"New" Setup Ready To Haul 400 Bushel Gravity Bin



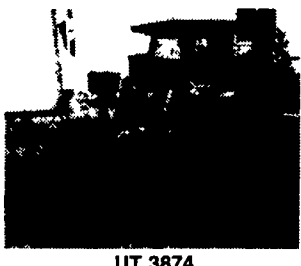
Mounted on 15 Ton Double Coupling Horst Running Gear **Super Deal!**

1994 Gehl SL 5625 SX 52 HP Diesel Skid Loader



UT 4053
Aux. Hyd., Lights, Vinyl Enclosure, New 72" Material Bucket, Complete Service Engine and Drive Line.

1995 Model Case 1845 C Uniloader



UT 3874
Large 80" Snow & Litter Bucket, Aux. Hyd., Engine Block Heater, Halogen Work Lights, Counter Weights, New 12:00x16.5, Low Hours, Good Pricel

Freshly Reconditioned Out of Our Shop! Case IH Maxxum, 100 HP Model 5140



UT 3980
4x4 Cab, Power Shift, Fully Serviced - \$33,500 **Let's Get Together!**

1994 Case 1840 Uniloader



UT 4088
Loaded With Options.

Super Clean, Bright Paint Ford 7740 2WD ROPS SLE w/4 Speed On The Go Power Shift, Rated 80 HP



16 Speed Ford Includes 4 Automatic P Shifts, 540-1000 PTO, Dual Remotes, 18 4x38 Radials, 75% New, Very Clean Original - \$21,500

1995 Case 1840 Uniloader, Loaded With Options



UT 4092
UM 3929
1994 Model Trail King 20 Ton Low Boy Tag-a-long Trailer, 23' Flat and 5' Beaver Tail, Flip Up Ramps, Air Brakes, 215x75R17 5 Radial Tires. Good Condition - \$7,900

Priced Reduced! Check This One Out! 100 HP Maxxum Model 5140 4x4 Cab Air Heater Power Shift & Shuttle Reverser with Late Model 520 HP Loader



UT 3925
Was \$41,500 - NOW \$39,800
Including Heavy Duty Case IH Model 520 Q. Tach Loader with Single Lever Controls. Serviced Thoroughly, Ready For Work!

1980 GMC Top Kick 3208 Cat 210 HP 10 Sp RR Trans, 16' Scott Grain Body w/LL2000 Scott Hoist, 52,000 GVW 10 Wheel Truck



Ready To Haul
Super Deal!
Ask For Deal!

New Carts At Economy Pricing. Choose the Grain Cart of Your Size. Sizes 450, 530, 640. Bushel Carts Ready To Haul.



Check Our Elite Finance Rate Programs.

Two New Machines Available From Binkley & Hurst Bros. Inc.



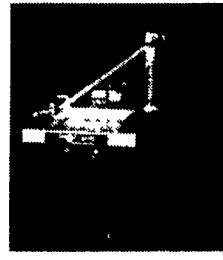
PRO-CHOPPER Straw/Hay Bale Chopping Grass Seed Sowing Machine

This machine is designed to chop and blow a bale of hay or straw to be used as mulch on a freshly prepared seed bed.

The Pro-Chopper can sow up to 40 pounds of grass seed per acre at the same time you are applying the mulch.

The Pro-Chopper will chop and blow a bale in less than a minute, converting 3000 pounds of material into biodegradable mulch in an hour. This will allow two people to sow and mulch an acre of ground in only 90 minutes time.

Savings can reach 1/3rd less staran and half the man hours when compared to shaking the bales by hand.



PRO-CRIMPER Straw/Hay Mulch Crimping Disc

This machine is designed to help anchor straw or hay mulch to the ground in areas where wind or water movement of the mulch are a concern.

Hitching is available in either 3 point, pull type or skid steer, with our Pro Attachment 2

The 3/16" x 22" Blades are spaced 8 inches apart There are 9 blades on the 6 foot unit and 12 blades on the 8 foot Pro-Crimper

The rugged axle shaft constructed of 1-1/2" steel is mounted in greaseable bearings.

BINKLEY & HURST BROS. INC.

133 Rothsville Station Rd.
P.O. Box 0395, Lititz, PA 17543-0395
(717) 626-4705 1-800-414-4705 Fax (717) 626-0996

