



**Duratorque-
Bias Ply Rear Farm Tire**

13.6-28
6 Ply

\$199
\$259

Other Sizes Available

- Excellent roadability provided by the overlapping lugs in the center
- Traction in a wide range of sizes due to the long bar design



- Long wear and durability from the braced lug design
- Easy lug cleanability

**DT710 Radial
Goodyear's Smoothest
Riding Rear Farm Tire**

184R34★

\$499⁰⁰

Other Sizes Available

- Minimum vibration and smooth ride provided by multi element tread
- Excellent traction from the increased lug count
- Unmatched traction performance in dry soil conditions



**Super
Traction
Radial**

16.9 R30

\$649⁰⁰

Other Sizes Available

- Self-cleaning tread action promoted by 45 degree tread lug angles
- Up to 25% deeper than conventional R-1 tires



**Dyna
Torque
Radial -**

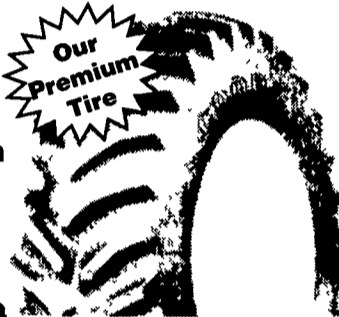
**Major Savings In
Time And Fuel
Costs**

184R38★

\$559⁰⁰

Other Sizes Available

Our
Premium
Tire



- Reduced vibration in field and road service
- Improved traction from the 3 pitch tread design

**Dyna
Torque II
Excellent
Drawbar Pull
For High
Torque
Tractors**

155-38 6 Ply

\$269⁹⁵

Other Sizes Available



- Reduced vibration in field from the long bar/short bar design
- Excellent roadability



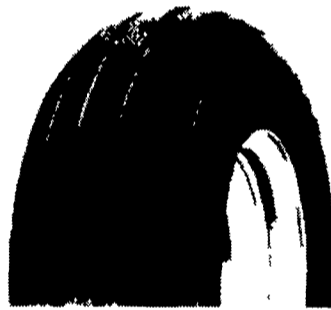
**Triple Rib
HD - Front
Tractor Tire For
Precise
Steering
Stability And
Long Tire Life**

550-16
4 Ply TT

\$43⁹⁵

Other Sizes Available

- Improved steering in loose, cultivated soil provided by the deep, wide center ribs
- 3 rib design provides excellent steering capabilities



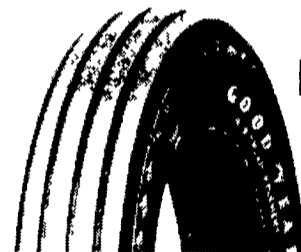
**Farm
Utility**

- Outstanding flotation
- Easy steering from the heavy grooved ribs

\$46⁹⁵

11L15 8 Ply TT

Other Sizes Available



**Rib
Implement
Tire**

**Easy Operation
For Many
Types of Equipment**

670x15 6 Ply TT

\$49⁹⁵

Other Sizes Available

- Easy rolling resistance with the 5-rib design
- Designed for dependable on/off highway service



**IT510
RADIAL**

175 LR 24 8 Ply

\$549⁰⁰

Other Sizes Available

- Maximum traction supplied by additional biting edges from the overlapping lug/block pattern
- Flotation and traction provided by a larger contact patch



**Industrial
Sure
Grip**

149x24 8 Ply

\$279⁰⁰

Other Sizes Available

- Reinforced lugs for industrial use
- Aggressive tread design



**Ultra
Grip
Lug**

10-16.5 6 Ply

\$99⁰⁰

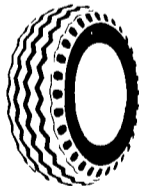
Other Sizes Available

- Premium skid steer tire
- For heavy duty applications

LABORER
Heavy Duty Industrial Tractor Front
Wheels 11L-15 8 Ply

\$89⁹⁵

OTHER SIZES AVAILABLE



**Industrial Tires
IT525 Bias - Improved
Traction And Handling**

175L-24 - 8 Ply

\$269⁰⁰

Other Sizes Available

**Lebanon Valley
Imp. Co.**
700 E. Linden St
Richland, PA
717-866-7518

**Zimmerman Farm
Service**
School Rd
Bethel, PA
717-933-4114

**Donald B. Rice
Tire Co.**
909 East St
Frederick MD 21701
1-800-950-0550

Bastian Tire Sales
R2603 Reach Road
Williamsport PA 17701
1-800-362-5279

Bastian Tire Sales
Rt 11 & 15
Shamokin Dam PA
1-800-326-9465

**Miller &
Sherwood**
153 E Tioga
Tunkhannock PA
717-836-1116

Dices Tire Shop
1421 Lincoln Way
Chambersburg, PA
717-264-9312

**Service Tire Truck
Centers Inc.**
1601 Manheim Pike
Lancaster, PA 17604
717-569-8473

**Service Tire Truck
Centers Inc.**
3403 Concord Road (PIE Building)
York, PA 17402
717-755-8473

**Service Tire Truck
Centers Inc.**
1201 S. Cameron St
Harrisburg, PA
717-238-8473

**Service Tire Truck
Centers Inc.**
25 East Ave
Easton MD
1-800-317-6152

**Service Tire Truck
Centers Inc.**
RD 1 Rt 934 North
Anville PA
717-867-2211

