

Dairy and Livestock Sales

Public Auction Register

Closing Date Monday 5:00 P.M.
of each week's publication
Internet Sale Register will be updated
every Sat. at 2:23 P.M.

FRI DEC 11 - Mules, Dairy Cattle, Farm Machinery Sale by Emanuel & Rebecca Lapp, 3924-B Ridge Rd., Gordonville, PA
Harry H. Bachman, Auct
FRI DEC 11 - 9AM 100 W Jackson St., New Holland, Lanc Co, Pa Tractors, farm equip., & supplies A&C Diffenbach Auction Inc
FRI DEC 11 - 12 Noon Middleburg Livestock Auct Sls, Inc Middleburg, PA Dairy Sale Clarence

Shirk & John Shirk, Owners 717-837-2222

SAT DEC 12 - Lebanon Valley Lst Mkt., 1 mi E of Fredericksburg, PA along Rt. 22 Work, driving & riding horse sale Consign welcome, 717-866-5783 Keith Byers & Gerald Hoover, Aucts

MON DEC 14 - 10AM 100 W Jackson St., New Holland, Lanc Co, Pa Hay, grain & straw auction A & C Diffenbach Auction, Inc.

TUES. DEC 15 - 548 Alexander Spring Rd., Carlisle, PA Fed Cattle Sale Carlisle Livestock Market, Inc. 717-249-4511.

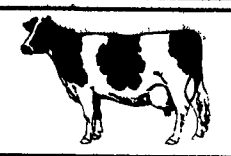
TUES. DEC. 15 - 7PM. 548 Alexander Spring Rd., Carlisle,

PA Christmas Sale, lambs & goats Carlisle Livestock Market, Inc 717-249-4511

TUES DEC 15 - 7:30PM. 548 Alexander Spring Rd., Carlisle, PA Feeder cattle sale Carlisle Livestock Market, Inc., 717-249-4511

WED DEC 16 - 9:30AM 612 Mount Pleasant Rd., Quarryville, PA Mules, farm equip., crops, Hh goods & antiques By Eli K. & Sadie B. Glick, Mel Hoover, Auct., 717-354-8397.

WED. DEC 16 - 10AM Wolgemuth Auction, 109 N. Maple Ave., Leola, Lanc Co., PA Wolgemuth Hay Sale Dennis Wolgemuth, Auct.



NEW HOLLAND SALES STABLES, INC.

New Holland, Pa.
Located 12 Miles East of Lancaster, just off Rt. 23

DAIRY SALE WEDNESDAY, OCT. 21, 1998

10:30 A.M. OPEN & BRED HEIFERS
12:00 NOON BULLS, FRESH COWS, SPRINGERS
Weekly Consignors

- Merle Breneman • Leroy Smucker • Jim Hostetter
- Marvin Eshleman • Dale Hostetter • Daniel Z. Stoltzfus

A Load of Canadian Cattle Selling For Leroy Smucker

- A Special Load Direct From Canada -
Popular Sires - Lindy, Astre, Broker, Parks, Combination Supersire, PLUS Many More -
Special Feature - A Supersire From Three VG Dams With Record To 26,000 Milk - She Is To Be Really Good!

10 Reg. Heifers - Bred 4-5 Months
From 22,000 Herd Average

2 Aerostar Bulls - 1 Yr. Old
Dam VG89 With Records to 24,460 4%

2nd Dam 19,000 Astro Jet
Both Ready For Heifers

Consigner - (Wayne's Granddaughter)

ANNUAL SHOW - SALE

Wednesday, Oct. 28

9:00 AM Show Judging

11:00 AM Sale Time

12:00 Noon Sale - Show Winners

The Show/Sale that many people enjoy watching and buying. Many good cattle exchanged owners at New Holland over the last several years.

We have **Eight Show Classes**

For details call our sales barn office...

Our 1998 Dairy Judge is
James Burdette - Mechanicsburg, PA



Note To Consignors!

Please send all information along with your cattle Tues.
Fresh date, breeding dates, milk weights, TB & blood test charts with your trucker.

Sale Managed By

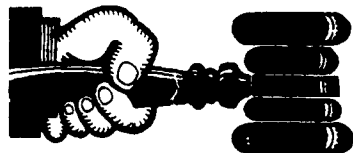
New Holland Sales Stables, Inc.

Barn 717-354-4341 Fax 355-0706 Home 717-397-5538

Norman & David Kolb, Mgrs. 61L

NOTICE!!!

Look For Public Sales
Scheduled Past Deadline
On Second To Last Page
Of Section A



AUCTIONEER'S DIRECTORY

Office:
717/291-1542

Residence:
717/354-9534

JACK DELP

Certified General Appraiser
Specializing in Farms & Land

148 East Broad Street
New Holland, PA 17557



John D. Stauffer

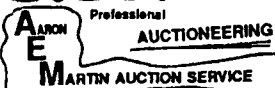
Auctioneers

1484 Mountain Road, Manheim, PA 17545

Fulltime Courteous Professional Auction Service
Since 1976

Real Estate • Farm Equipment • Antiques
Personal Property • Livestock

Phone 717-665-5099



Professional
AUCTIONEERING
MARTIN AUCTION SERVICE

410 W. Church Rd.
Ephrata, PA 17522
(717) 733-3511

Real Estate • Farm Equipment
• Antiques • Household Goods

It doesn't cost to use our Auction Service...It Pays.
CALL TODAY!!



KREIDER, KLINE & GOOD

AUCTIONEERS
COMPLETE PROFESSIONAL AUCTION SERVICE

REAL ESTATE - FARMS & RESIDENTIAL

PERSONAL PROPERTY - ANTIQUES -

FARM STOCK SALES - LIQUIDATIONS

RANDAI V. KLINE LLOYD H. KREIDER

AUCTIONEER-REALTOR AUCTIONEER

717-733-1006 717-786-3394

ROY E. GOOD, JR.
AUCTIONEER

(717) 445-4309



Farm Agency, Inc.

Courteous Real Estate Services

Professional Auctioneers

State Certified Appraisers

Specializing in Farms and Land

Alvin Horning, Broker

Route 23, Morgantown, PA

(610) 286-5183

New Holland Sales Stables, Inc.



Fall Feeder Cattle Sale

October 23, 1998

Friday 6:00 P.M. - Evening Sale

Approx. **750 Head Sell**

If you have feeders to sell, OR if you need cattle - this should be the sale to attend!

NOTE: All cattle will have shipping fever shots, ready to go on pasture and into feed lots.

Sale Managed By:

NEW HOLLAND SALES STABLES, INC.

12 Miles East of Lancaster Off Rte. 23

Mgrs. Norman & David Kolb #61L

Sale Barn Office: 717-354-4341

Res.: 717-397-5538 Fax: 717-355-0706

Selling 90 Registered Guernseys

Brightside Farm

Complete Dispersal Thurs., Oct. 22, 1998

11:00 a.m.

Malvern, PA

Owner:

Ernest Pyle

610-827-7446

Sale Manager:

Guernsey Marketing Service

Reynoldsburg, OH 614-864-2409

and

PA Guernsey Breeders

724-667-0834

Aberdeen Sales Company, Inc.

Certified Livestock Market

Complete Auction & Appraisal Service

P.O. Box 250

Churchville, Maryland 21028-0250

SPECIAL FEEDER CATTLE SALE

450.....HEAD.....450

Saturday, Oct. 31, 1998

12:00 Noon.....Sharp

Steers.....Heifers.....Bulls

Sale to be held at the Aberdeen Sales Co., Inc. Livestock market, located on Md. Route 22 in Churchville, Maryland, Harford County.

Cattle will be sorted and graded and sold in lots to suite all buyers

Cattle weigh 350 lbs. - 950 lbs. No shipped cattle in this sale and sold on out weights

If you have feeders to sell, please give us a call. Feeders are in good demand

We will accept cattle 24 hours prior to the sale. they will be fed and watered.

Trucking And Order Buying Service

Aberdeen Sales Company, Inc.

Livestock Market

P.O. Box 250

Churchville, Maryland 21028

Phone: 410-836-7590

410-734-7596

Night: 410-734-7105

Restaurant Open

11:00 A.M.

HOLSTEIN MILKING HERD

and Bred Heifer Dispersal Saturday, October 24, 11:AM

60 - Grade Holsteins Sell - 60

53 Cows - 7 Real Close Bred Heifers

R.H.A. 20,068 4.1 820 3.3 645; 2¢ milking in 1st or 2nd Lactation;

23 fresh Sept, Oct or Due Nov. - No BST used;

14 milking from 72 lbs to 109 lbs. Per day;

70% of animals selling are Sire ID; Majority Are AI Sires.

These Cows Sell:

#135 - 5-1 365 30,380 3.5 1106 (Fresh Sept); #56 5-0 343 29,710 3.4 1040 (Milking 109 lbs); #360 4-5 365 22,740 4.6 1039 (Sells Fresh); #164 6-0 365 25,300 3.6 917 (sells Fresh); #351 4-11 284 24,420 3.9 950 (Milking 100 lbs);

1st or 2nd Lactation Animals Selling

#416 3-3 365 25,580 4.0 1030 (Due Oct.) #374 3-2 311 20,660 5.0 1028 (Due Dec); #412 3-5 330 22,400 3.8 859 (Milking 84 lbs.); #375 3-2 307 22,890 3.9 897 (Due Oct.); #380 3-3 296 21,010 4.2 875 (Due Nov) #157 2-6 365 21,680 3.7 802 (Due Nov.)

Note: If You Are Interested In Sound Dairy Cows That Will Produce Even Better For You, Come And Take A Look, You Won't Be Sorry.

Sale Location: Near Thurmont in Frederick Co. Maryland. From Rt 15 Take Rt. 550 South Thru Thurmont Approx. 2 1/2 Miles to Stop Sign, Sale On Corner Of Rt. 550 And Hessong Bridge Rd. Barn On The Corner Can't Miss It.

Tested for Interstate Shipment • Catalogs available

Pregnancy Examined • DHIA Transfer Sheets

SCC: On Each Cow Will Be Announced.

Equipment Selling immediately after cattle.

Approx. 110 ft. of catch stalls for 32 cow barn, 600 gal. Girtion milk tank w/double fan compressor, six DeLaval milker units, DeLaval model 76 Vac Pump w/3hp motor, Glass pipeline w/automatic washer and Vac Line for 32 cow barn. 7 ton metal up-right feed tank w/25ft. Augar, Nine 8ft H Feed Troughs, three 12 ft. J feed troughs and 80 free stalls of all kinds.

Sale Manger

Owner: Daniel and

Brenda Nowell



CATTLE CO.

Norman Hill, 15905 Union Chapel Rd.,

Woodbine, Maryland 21797

PH: 410-489-7121

13103 Hessong Bridge Rd.,

Thurmont, Maryland 21788

Ph: 301-271-4214