

Public Auction Register

Closing Date Monday 5:00 P.M.

of each week's publication

Internet Sale Register will be updated

every Sat. at 2:23 P.M.

FRI NOV 13 12 Noon & SAT, NOV 14 - 8 30 AM Real Estate, pers prop antiques, furniture, glassware, toys, car, guns, Winross & Hess trucks, banks 424 Linden St., Terre Hill From Rt 23 take Rt 897 N to Terre Hill, turn left on Main St., turn right on Linden St Charles M & Mildred L Shirk, owners Kline, Kreider & Good, aucts

SAT NOV 14 - 12701 Stonewall Rd., Shippensburg, PA Farm equipment & related items By Ivan & Ellen Leid Nevin & Andrew Martin, Aucts., 717-532-5382

SAT NOV 14 - Salem, NY Car-olay milking herd & bred Heifer dispersal, 145 head By the Family of Rea & Brian Campbell The Cattle Exchange, 607-746-2226

SAT NOV. 14 - Lebanon Valley Lyst. Mkt., 1 mi E of Fredericksburg, PA along Rt. 22. Work, driving & riding horse sale. Consign. welcome, 717-866-5783 Keith Byers & Gerald Hoover, Aucts.

SAT NOV. 14 - 8:30AM Toys and Hh Items, 128 Weaver Rd., Lancaster, PA. By Jay Richard Low Estate Witman Aucts

SAT NOV 14 - 9AM Pequea Battery Going Out Of Business Auction. From Lancaster take 30 E to Ronks turn left on Ronks Rd to sale on right. By Emanuel B & Nancy Fisher Mel Hoover, aucts.

SAT NOV. 14 - 9AM Antique furniture, lamps, glassware & china, general antiques, collectibles. At Springetts Fire Co Social Hall, 3013 E. Market St., York, Pa. For Gerald Warnecke of York, Pa Jacob A Gilbert, Brian L Gilbert, aucts

SAT NOV. 4 - 9 30AM Shop Equip, Hydraulic & Air Tools & all inventory At Fisher Structures RD #2 Box 54, Center Rd., Loysville, Pa By Fisher Structures H&H Auction Co.

SAT NOV. 4 - 9:30AM Public sale of Personal Property and Real Estate Farmette (RE at 12:00 Noon) Located at 163 Mtn. Drive, Fredericksburg, PA, Swatara Twp., For Joseph & Janet Catani Auct. Elvin Ginchich.

SAT NOV 14 - 10AM 104 Acre Dairy Farm Farm Auction for Clyde & Charlotte Miller, Dale & Dorothy Stewart. From Airville York Co S. approx 8 miles to Delta Family Restaurant T/L

Dairy and Livestock Sales

towards Delta, first left on Lay Road, go to Flintville T/R on to Burke Rd turn left, first farm on left, signs posted. Peach Bottom Twp., York Co Bradley K Smith, auct.

modern firearms, rifles, shotguns, hand guns & hunting accessories. At the Horst Auction Cen-

ter, at the corner of Rt. 322 and Durlach Rd., Ephrata, Lanc Co., Pa. Horst Aucts.

32,000 Board Feet Of Lumber White & Red Oak, Pine, Poplar, Ash PUBLIC AUCTION SAT., OCTOBER 31, 1998

Auction Time: 9:00 A.M.

DIRECTIONS: From Rt. 272 at Ephrata take Schoeneck Rd. through Schoeneck, turn left onto Sandy Hill Road to right on Netsley Dr. to 65 Netsley Dr., Denver, PA.

POPLAR LUMBER: Approx. 500 Pcs. 1x8, 10 & 12 various lengths, 180 - 2x8x12, 80 - 2x8x10, 2x6x8' to 16', Kiln Dried Poplar: Approx. 800 Pcs. 1x6, 8, 10 & 12 in various lengths, Approx. 300 Pcs. 2"x6", 8", 10" var. lengths, 132 Pcs. 2"x10" x12" KD Clear. PINE LUMBER: Approx. 350 Pcs. 1"x6", 8", 10" various lengths.

RED OAK: 260 Pcs. Kiln Dried 1"x8" various lengths, 75 Pcs. 6/4 KD FAS OS, 84 Pcs., 2" KD FAS OS, 54 Pcs., 1x8 KD Maple, 48 Pcs. 6/4x6 to 12" Ash, 30 Pcs. 1x4 to 10" Ash, 105 Pcs. 1x8 to 12" White Oak, 40 Pcs. 1x8 to 12" Gum, 56 Pcs. 1x8" to 12"x8" Ash plus other misc. lumber.

MISC. ITEMS: 3 Pt. Blade, 16.9x30 Chains plus some other items.

NOTE: Be prompt, lumber selling at 9:00 A.M. Some items subject to prior sale. No out of state checks.



Auction By
MARTIN'S SAWING SERVICE
733-9136

Public Auto Auction

EVERY MONDAY & THURSDAY
AT 5:00 PM

OVER **1000** CARS & TRUCKS
AUCTIONED WEEKLY

Vehicles From -

Bank Repossessions, Dealer Trades,
Drug Confiscations, and Off Leases



1200 Ridge Pike - Conshohocken, PA

Exit 7B off the Blue Route Just Minutes From Plymouth Meeting Mall

For More Information Dial 215-CAR-SALE

Public Auction Surplus School Supplies North Salem Elementary School (Take West Canal Road 1 mile from square in Dover to North Salem Road and turn right. Watch for Signs).

Fri., Oct. 30, 1998 9:00 AM

A. B. Dick Model 1700 Duplicating Station, A.B. Dick S/204 Duplicator, Model 217 Duplicator, A.B. Dick 156 Platemaker w/Supplies, A.B. Dick 166 Master Conversion Unit w/Supplies, A.B. Dick 675M Platemaker & Conversion Unit (Parts Missing), NuArc Fliptop Platemaker (Carbon Arc), File Cabinets, 10' Projection Screen, 29 Copies of Homes; Today & Tomorrow (2nd Edition), 20 Copies of the Home: Its Furnishings & Equipment (2nd Edition), 3 Kenmore Semi-Auto Sewing Machines in Cabinets, Singer Touch & Sew Sewing Machine, 2 Whirlpool Tubs, 1 Shop Polisher - Electric Motor, Podium, 2 Library Caddys, Metal & Wooden Teachers Desk, 2-5' Wooden Tables, 3 Antique Tables, Plastic Covered Metal Frame Sofa & Chairs, Shelves on Rollers, Kindergarten Wood Kitchen Set, Metal & Library Shelving, 800 Desks & Chairs, 6 Dusk to Dawn Lights, 4' and 8'; Fluorescent Lights, 15 Ceiling Fans, 20 Towel Dispensers, Kitchen Items - Pots, Pans & Etc., Plus Many Other Items of Interest.

Large Ford Van
School Bus Converted To Truck
With Large Door In Rear
Terms: Cash Or Good Check.

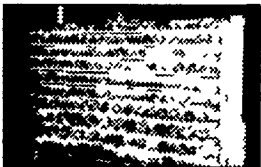
Seller: North Salem Elementary School
5161 North Salem Road, Dover PA
AUCTION CONDUCTED BY:
Renzel's Auction Service
Emigsville, PA 764-6412 PA Lic. #761

AN ON-SITE AUCTION FOR



ON
WEDNESDAY • OCTOBER 21 • 1998 • 9:30 A.M.

NOTICE: Greencastle Metal Works, Inc. is consolidating facilities and will sell the following from their location along Route 16, just West of Greencastle, Pennsylvania;



FABRICATING AND SHOP EQUIPMENT • TOOLS REMAINING INVENTORY • MISCELLANEOUS

Whitney 30 Ton Single Station Hydraulic Punch Complete With Tooling, Uninotch 11 Ga Power Notcher, Thermo Arc Pac 10 Plasma Cutter, Hobart Welder, TRW NS30 Stud Welder; Westinghouse Stick Welders, Peer Spot Welders, (2) Dust-Pak Cartridge Collector Units With Welding Leads; Power Welding Turn Tables and Other Welding and Shop Tables, Roller Conveyors, Carts, E-Z Go 3 Wheel Electric Maintenance Cart With Low Hours, Titan U350 Sand Blasting Unit, Graco Paint Spraying System, Commercial Steam Jenny, Liquid Plush For Use With Steam Jenny, Several 10 and 18 Ft Trolley Systems, Monorail Lifting Segments, All Types of Racks, A Rack Full of Punches and Dies, Pallet Jack, Hand Trucks, Hydraulic Cylinders, Valves and Gauges, Jacks, All Types of Power Tools, Shop Air Compressor, All Types of Pneumatic Tools, All Types of Hand and Metal Working Tools, Bins of Hardware, Wheels, Reels, All Types of Wire, Welding Supplies, Fuel Tanks, Ladders, Paints, Electric Motors, Fans, Regulators, Louvers, Blowers, Electrical Supplies, Various Lubricants, Insulation, Hoppers, Hand Forming Rolls, Sheet Lifting Mechanism, Drag Plate, Forklift Boom and Guard, Supports, Floor Decking, I-Beams, Grating, 4 to 10 in Galvanized Duct Work, New Duct Work Flanges, Thread and Hinges, Chain and Cable, Copper Pipe, Rubber Sheeting, Large Assortment of UHMW Sheeting of Various Sizes, A LARGE INVENTORY OF REMAINING

METALS Including Copper, Stainless, Galvaneal and Perforated Sheet Metal, HR-Steel Including Square Tube, Galv. Round Tube, Galv. Pipe, Round Tube, Blk. Pipe, Flat Bar, Round, Square, Angle, Channel, Rec. Tube and Others; CR-Steel Including Flat Bar, Hex, Round, Square and Others; Brass Including Flat, Round and Tubing; Copper Including Sq. Bar, Flat Bar and Tubing, Aluminum Including Flat Bar, Angle, Channel, Sq. Bar, I-Beam, Round Tube, Pipe, Sq. Tube, Rec Tube, Round and Others, SS Including Flat Bar, Round, Sq Bar, Hex, Pipe and Others, Assortment of OFFICE FURNITURE, Drafting Table and Many Other Related Items Not Listed

• 18 BY 40 FOOT FREE STANDING BUILDING With All Structural I-Beam Joist and Corrugated Tin Roof

• (2) FARM WAGONS

DIRECTIONS: From Interstate I-81 Take Exit 3 Onto Route 16 West, Continuing Thru Greencastle To The Auction Site (Watch For Auction Signage)

TERMS: Include Cash or Approved Check on Day of Auction With Positive Identification Required For Registration. Not Responsible For Accidents On Site

ABSOLUTELY NO BUYERS PREMIUM

James G. Cochran
Auctioneer
PA AU003314



J.G. Cochran



Thomas E. Bikle
Associate

AUCTIONEERS & ASSOCIATES LTD.

Professional Auctioneers & Appraisers Since 1972
Main Office: 7704 Mapleville Rd., P.O. Box 222, Boonsboro, MD 21713-0222
(301) 739-0538 • TOLL FREE (MD) 1-800-310-2844 • FAX (301) 432-2844
PA Lic. #AS000832-L

NATIONALLY RECOGNIZED • AWARD WINNING AUCTIONEERS SINCE 1972

Lots of Milk! Affordable Prices! Quality Cattle!

\$18 Milk Is Here!

East Coast Breeders

80 Invitational 80
Lots Thurs., Oct. 22, Lots

11 AM Lampeter, PA

Sale Barn Phone 717-464-4080

Fresh Cows Milking 100Lbs!

Bred Heifers Due This Fall!

Open Heifers & Calves

From 30,000 To 35,000Lb Dams!

Group Consignments From Well Known Herds: Mar-Bil, Schugs; Glen-Vally; Pinta-Lane; Pyramid; Joy-Wil; Rinehart Farms; Turtle-Rock; Lovdal; Hottensteins; Ransom-Rail; Shadow Wave & More!

*Fresh Inspiration 2Yr Old Sells Milking 75Lbs From Ex Dam w/20,730M 5.0% 1035 & Grdam Ex w/28,177 3.8% 1065F & 3rd Dam w/1098F!

*Fresh Charles Dtr Sells From Ex Dam w/25,270 3.7% 939 & grdam Ex w/28,640 3.5% 1005F!

*VG Tonic Dtr Sells w/30,036 4.0% 1192 3.6% 1077 At 3 Yrs & Will Go Ex!

*Broker Dtr Sells Fresh & She Is Big & Fancy! Dam By Raider w/18,000M & Grdam w/20,000M!

*Fresh 2 Weeks A Supersire Dtr Sells From VG Dam w/22,320 953F & Grdam Ex w/115,000LT! The Right Kind!

*Aerostar Dtr Sells Milking 100 Lbs at 3 Yrs & Made 2 Yrs 305D 23,160 3.6% 834 3.2% 751. Dam GP w/130,000LT & Grdam VG-87 w/145,000LT!

*VG Luke Dtr Sells Fresh Milking 110 Lbs & Made 1-10 365D 27,731 3.5% 972! Dam VG w/31,782 3.9% 1236 & Grdam GP w/123,000LT!

A SPECIAL SELECTION OF HEIFERS

*Charles Dtr Sells Born 10/96 Due 5/28! Dam Ex-90 w/19,000M

*Charles Dtr Sells Born 1/96 Due 5/8! Dam VG-88 w/28,510 4.5% 1269F!

*Clesius Dtr Sells Bred 6/26 To Brock From VG Mascot Dam w/28,690 990F & Grdam VG w/23,840 4.4% 1040F!

*Bellwood Dtr Sells Born 6/97 From VG Dam w/2 Yrs 365D 26,930 1191F!

DIRECTIONS: Sale Held At The Edwin J. Landis Farm, Lampeter, Pa. Located 1 Mile North Of Lampeter On Lampeter Rd., Directly Across From Pioneer Woods Apartments. Watch For Auction Signs.

Sale Managed By:

