

tools By Willard & Jane Tomlinson Kreider, Kline & Good, Aucts.
 SAT OCT. 24 - 9:30 AM Real Estate & Personal property Horse farm, approx 45 acres Off Rt 187, approx 1 mi to Vought Rd., Windham Twp, Bradford Co., Pa 5 mi off Rt 17 Exit 62, Nichols, NY to Rt 282S to Rt 187 in Pa. left off Rt 187 to Vought Rd at cemetery, 13 mi from LeRaysville, Pa off Rt 467 Nickolas Williams, Lois Williams, owners Shamrock Auction Service

Public Auction Register

Closing Date Monday 5:00 P.M.

of each week's publication

Internet Sale Register will be updated

every Sat. at 2:23 P.M.

SAT OCT 24 - 9AM Liquidation of entire contents. Former Derry Twp Middle School East Granada Ave, Hershey, PA across from the Hershey Theatre Ziegler-Valentine, aucts

SAT OCT. 24 - 9:30AM Snowmobile Liquidation auction Car, van classic Mercedes, motorcycle, Schaeffer Enterprise, 21 Washington St, Bernville, Take Rt 183 to Bernville, turn onto Washington St By Gene Schaeffer Richard A Kramer, Rick Kramer, aucts

SAT OCT 24 - 10:30 AM Morgantown, Pa Caemaron Farms Complete Dispersal, 200 head By Andy Stoltzfus, The Cattle Exchange, 607746-2226

SAT OCT 24 - 8AM Shippensburg Fairgrounds, Shippensburg, PA Consign Sale, miniature horses & donkeys For info Joe Hawbaker, 717-328-2213 John D Downin, Auct

SAT OCT 24 - 8:30AM 500 Lots of quality antiques/collectibles At the Lisburn Comm Fire Co pavilion, Lisburn, Pa Little Ike Eichelberger, auct

SAT OCT 24 - 8:30 AM Antiques & Household Goods Estate of Helen W Snyder, 25 Bentz Mill Rd, Kraltown, Pa York Co Rentzel's Auction Service

SAT OCT 24 - 8:30AM Btwn Thomasville & Abbottstown, Beaver Creek Rd, York Co PA Tractor, gas engines, thresher, farm equip, cars, coll & misc By Phyllis A Simpson Rick Foreman & Ralph Brenneman, Aucts., 717-757-5130

SAT OCT 24 - 9AM The International Harvester Dealership of the late Frank Cornelius Tower Street, Waterville, NY Old Time Auction Co

SAT OCT 24 - 9AM Tools, Equipment Rt 74 S Queen St, through Spry, Right on Honey Valley Rd, at Coldwell Banker office, 1/2 mile to left on Franklin St, 1/4 mile to right on Franklin Square Drive Brad Smith, auct.

SAT OCT 24 - 9AM Household Goods, Antiques, Quilts, Old Christmas Items, Coins From Rt 340, 2 miles N of Cambridge Rd to Wanner rd, turn right go 1 mile to sale on left Margaret Lawrence, owner Dale & Ira Stoltzfus, aucts

SAT OCT 24 - 9AM Car & Tractors, Furniture, Antiques & Collectibles Gary Hauseman Auct

SAT OCT 24 - 9AM Sale for Violet Jones, Tremont, Pa Household Dwight D Miller, auct

SAT OCT 24 - 9AM Antiques, collectibles, tools, auto 561 Park Ave Hershey, Pa William W Pitsenberger Estate Kerry Pae, aucts

SAT OCT 24 - 9AM Al Starr Fireman's Bldg, Willow St, PA Antiques, coll, furn, Rr mem, prints, milk bottles, appl, WWII helmets, riding mower w/bagger, gas grill & tools By Ada S Fisher, Emma Beiler & Earl R Baninger Miller & Siegrist, Aucts, 717-687-6857

SAT OCT 24 - 9AM Nice shop power tools, nice carpenter hand tools, misc building supplies 2748 Black Rock Road, Hanover, Pa From Hanover square take Baltimore St to left on Black Rock Road & proceed 4.2 miles to sale site Roy Craumer Jr, owner Dennis J Plunkert, Robert G Fickinger, aucts

SAT OCT 24 - 9AM From Reading, take Rt 422 E to Rt 176S to Rt 724 E thru Gibraltar for 1.3 mi, turn left on Old River Rd to sale on right, Robeson Twp, Berks Co, PA Furniture, antiques, tools, riding mower, etc By Carmen P D'Angelo Homing Farm Agency, 610-286-5183

SAT OCT 24 - 9AM 306 N Star Rd, Strasburg, East Lampeter Twp, Lanc Co, PA Real estate, Hh goods, antiques, coins & car By Anna H Ranck Robert E, Jeffrey R, & Michael L Martin and Randall Ranck, Aucts, 717-656-7770

SAT OCT 24 - 9AM Fall Consignment Auction, Tractors, farm machinery, trucks, lawn & garden, tools Harford Co Equestrian Center, 608 Tollgate Rd, Belair, Md Isenrock Auction

SAT OCT 24 - 9AM Real Estate, Antiques, Collectibles, Primitives, Appliances, Furniture, Misc in Perry Co, Tuscarora Twp, approx 4 miles E of Ickesburg on Rt 17 On the corner of Cherry Valley Rd & Rt 17 Wilmer & Brigitte Shelly owners Fahnestock's Auction Svc

SAT OCT 24 - 9AM Antiques, furniture, collectibles Nippon-Noritake, German & ironstone china pcs, pressed & pattern glass approx 40 bone china cups & saucers, Hh goods Craftsman snowblower, hand & garden tools 1550 Dunmore Drive, Lanc, Pa For Reuben M Miller, Miller & Siegrist aucts

SAT OCT 24 - 9AM 238 Red Hill Rd Pequea, Lanc Co, PA 14 Acre Farmette w/2 bdrm mobile home antiques, Hh goods coins

Lebanon Valley Livestock Mkt.

1 mile east of Fredericksburg, PA, along Rt. 22

Farm Machinery Consignment Sale

November 7, 1998 9:00 AM

FARM MACHINERY, TRACTORS, LAWN & GARDEN, CARS, TRUCKS, RV'S, BUILDING MATERIAL, HOUSEHOLD ITEMS & MISC.

To have your items advertised, please call by Oct. 26th.

We are accepting items Nov. 2 to Nov. 6, 9:00 AM till Dark.

F.M.I. Call: Dave 717-866-5783

Neil 717-933-4865

Brian 717-865-7586

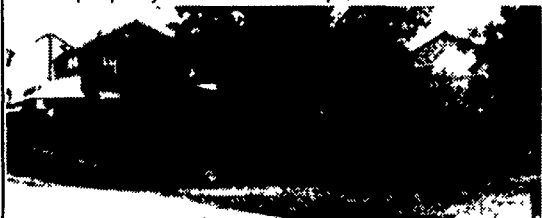
Barn 717-865-2881

Auctioneers: Keith Byers, Eugene Gingrich, & Gerald Hoover

PUBLIC AUCTION VALUABLE REAL ESTATE ANTIQUES - PERSONAL PROPERTY FRI., OCT. 30, 1998

Auction Time 9 AM Real Estate 1 PM

LOCATION: Village of Martindale - 498 Gristmill Rd., Martindale. From Ephrata Rt. 322 East to traffic light in Hinkletown. Turn left onto Martindale Rd. to Martindale. At Eby's Store turn right onto Gristmill Rd. to property on left. Earl Twp., Lanc. Co.



Real Estate consists of 2-1/2-story log & frame house w/1st floor eat-in kitchen, living rm., family rm., 1/2 bath & laundry. 2nd floor has 3 bdrms. & full bath Full bsmt w/cold cellar. Attic storage. Oil forced air heat. Detached 2-sty. frame 3-car garage/shop bldg 30x30. All on large 6/10 acre lot w/large mature shade trees. NOTE: This is a rural (Edge of town) property w/deep country size lot. Early log house w/frame siding ideally located w/easy access to Rt. 322 & Rt. 23. Terms: 10% down, balance 60 days. For plotting of property, details, etc., call Auctioneers at 717-445-4309 or 717-733-1006. Inspection by appointment or open house on Sats., Oct. 10, 17 & 24 from 1-4 PM.

Personal Property - Antiques - Furniture

Frigidaire 17 cu ft Refridge, Chest Freezer, Gas Range, Hotpoint H D Washer, G E H D Dryer, GE Microwave, Pine Ext Table w/11 Boards, 4-pc Cherry Bdrm Suite, Modern 3-pc Bdrm Suite, Decorated Pine Blanket Chest, Cedar Chest, Walnut Drop Leaf Table, Walnut Marble Top Washstand, Jelly Cupboard, Cherry Dry Sink, Oak Bow Front China Closet w/Shelves, Cherry Dropleaf Table, Victorian Marble Top Table, Slant-Top Walnut Desk, Walnut Secretary Desk w/Bookcase, Oak China Closet, Sm Pine Table w/Drawer, 2 Sets - 6 Plank Bottom Chairs - 1 Set Decorated, Boston Rocker, Pressed Back Rocker, 2 Sm Plank Bottom Chairs, Cane Seated Rocker, 2 Arrow-Back Chairs, Youth Chairs; Sm Rockers, Sm Cradles, 2 Sofas, Sofa Bed, Platform Rockers, GLASSWARE: Japan Tea Set, Flow-Blue Plates, Cup & Saucer, Celery Stands, Spoons, Green & Pink Dep Glass including Cookie Jar, Carnival Water Set Margold Pitcher w/6 Glasses & Other Carnival Dishes, Crooksville Dinner Set - Serv for 10 w/Extra Turkey Platter, Homer Laughlin Dishes, Ironstone Platter, P G Wines, Opalescent Glass Basket, Gold Trim Tea Set, 3 Sets Black Handle Knives & Forks, Lots Pressed Glass; Pressed Glass Water Set, Flatware, Pots & Pans, Griswold #10 & Others, GE Canister Vac Cleaner, Table Lamps, Kero Bracket Lights, Kero Finger Lights, Wall Mirror, Sessions Mantel Clock & Others, Decorated Milk Can & Hand Saws, Corn Dryer, New Brighton 4-Gal Jug, Dolls & Doll Cradles, Doll Coach, Horse & Cart Toy, New Holland Toys & Lots of Others, New Holland Innovators Book, NY Times in Book Form, Old German Bibles & Other Old Books, Lap Robe, Quilts, Bedspreads, Crocheted Dollies, Assorted Linens & Tablecloths, Pocket Watches, Pocketknives, Rogers Bros Flatware for 8, New Holland Machine Co & V F Weaver Adv Pcs, Martindale Restaurant Liquor License, Few Garden Tools, 14' Fiberglass Canoe, plus many other items

NOTE: Auction to begin w/sm items & household goods followed by furniture after Real Estate at 1 PM. A lot of nice items to be sold to highest bidder! Food stand

TERMS by ESTATE OF MAGDALENA MITCHELL

Owena Mitchell, Ex., 717-445-4976
 Melvin Mitchell, Ex., 717-859-1258

Auction conducted by Randal V Kline, Lloyd Kreider Roy Good, Jr, Auctioneers Lic #2116 #499 #513 717-445-4309 Linda Kling, Atty



3.2 ACRE M/L COUNTRY PROPERTY VOGANVILLE PUBLIC AUCTION

THURS., NOV. 19, 1998 Auction Time: 5:00 P.M.

DIRECTIONS: From Rt. 322 between Ephrata and Blue Ball, take Railroad Ave. toward New Holland, turn right onto Linden Grove Road and go 1.1 mile to property on right, Earl Township, Lancaster Co., PA.



333 Linden Grove Road, Ephrata 2 1/2 STORY FRAME HOUSE

With large eat-in kitchen with modern cabinets, living room, parlor, family room, laundry room, full bathroom and enclosed porch on 1st floor. UPSTAIRS has 4 bedrooms, attic storage, partial basement, vinyl & aluminum siding, standing seam roof, storm windows, cistern, 550 gal. underground fuel tank.

- 2-car detached garage
- Oil hot water heat
- Well & septic system
- Large garden & yard

2 STORY BARN: Fully scaffolded and horse stalls, and forebay, attached 20'x25' 2-bay garage, attached 15'x28' 1 story block building with dampening cellar. Also a block & frame wash house with attached 1-car garage.

NOTE: a property with many possibilities including horses, extra building lot, produce farming. A good location with lots of space. Check with Earl Township concerning your interests.

OPEN HOUSE: Saturday, October 31, 1:00 to 3:00 P.M.; Saturday, November 5, 1:00 to 3:00 P.M. or by appointment.

Call Auctioneer for appointment or help to obtain bank financing.

TERMS: 10% down payment day of auction, balance at final settlement on or before January 15, 1999.

Attorney: Robert Weaver, 354-4456 Auction By

MELVIN H. RUTT

John S. Kurtz, P.O.A. 354-9178



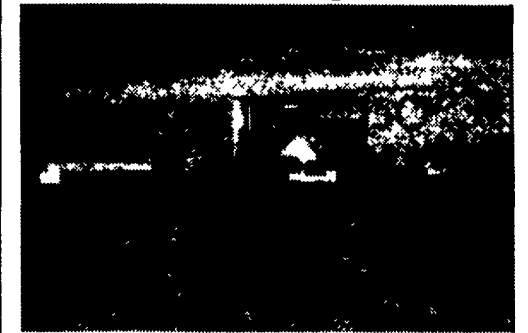
410 West Church Rd Ephrata, PA 17522 (717) 733-3511

Public Auction

(130 Acre Dairy Farm)

Mon., Nov. 9, 1998 at 1:00 P.M.

Located in Lebanon County. Just off Rte 322 between Campbelltown and Fontana, Pa. At the Lebanon Valley Bible Church, take Mt. Pleasant Road to sale site first farm on right.



Situated in Lebanon Township, Lebanon County, Pa.

Real Estate consists of 130 acres M/L. Limestone soil in high state of cultivation. 6 acres pasture with pond.

Thereon erected a 2 1/2 story limestone and frame house. First floor consists of a large eat in kitchen, dining room, family room, living room & bath. Second floor consists of 4 bedrooms and bath. Oil fired hot water heat.

This is an antique limestone house with 2 staircases. Rear of the house is a summer house with fireplace and arch cellar.

Large Bank Barn with limestone gable ends. The barn is equipped with attached milk house. Also attached is a building for dry cows & heifers.

Large feed bunk area.

Large free stall & loose housing facility for 80 +/- cows.

Harvester 45 x 15 Surry tank. 20'x70' and 20'x60' Harvester silos; 20'x80' concrete starve silo; 2- 18'x18' grain bins & 1- 14'x18 grain bin; wet bin.

Equipment Shed. large corn barn & equipment storage area.

Concrete block 2 car garage, & a large shop w/heat.

Terms: 10% down, balance in 45 days. Persons wishing to inspect farm may do so at Open House on Sat. Oct. 17 & Sat. Oct. 31 from 1 to 3 p.m.

For more information call (717) 272-9446 or the auctioneers at (717) 653-8762 or (717) 665-7284.

Sale by: Adella L. Brandt

Auctioneers - AU617L

Raymond Miller - 653-8762

Jim Hershey 665-7284

Attorney - Samuel Weis, Jr.

BANKRUPTCY AUCTION

FARM, CONSTRUCTION & FORESTRY EQUIPMENT

WED. OCT. 21, 10 A.M.

RT 33 Delfaville (Hardyville) VA

Selling The Personal Property belonging to the Bankruptcy

Estate of Thomas Gilbert

Case No. 98-37067-DOT;

Bankruptcy Trustee: Kevin R. Huennekens, Est.

PARTIAL LIST: '91 JD 9600 Combine Grain & Corn Head;

15 FARM TRACTORS: '93 JD 8720 4x4, JD 4640, 92 JD 2155, JD 2950, '88 JD 2150, JD 3020, JD 830, JD 400, JD 430, JD 730, JD 4520, JD 245 w/Loader, and more.

ATTACHMENTS - 2 JD 83CO Seed Drills, JD 230 Disk, 25' Harrow, JD F Harrow, JD 2350 Plow, JD 2800 B Plow, NH 311 Hay Baler, JD 1600 Chisel Plow, JD 7100 Row Planter, JD 709 Cutter, GM 30' Applicator, JD Cultivator, JD 225 Disk & more.

CONSTRUCTION EQUIP: Cat 930 Rt. Loader, JD 655B Crawler Loader, Cat 613 Pan, JD 490 Excavator, Gallion T-500, Grader, Cat D6C Dozer, w/s 900 Excavator, Pile Driving Rig. Lorain 26 Crane.

TRUCKS: 2 IHC S-180 & 750 Lime Spreaders, 3 Grain Body Dumps, 2 Mack

T/A Dumps, 2 IHC 1700 Flat Dumps, Diesel Service Truck & more.

TRAILERS: '93 20 Ton Eager Beaver Trailer, 4 Ton Bulter, 16 Ton General.

FORESTRY: REO K Boom Loader, Frick Edger, JD 640 Skidder, 2 Frick Sawmills "0" & "00". Tyrone Berry Carriage Drive.

MISC.: Grading Boxes, Welders, Buckets, Drag Line, Spreader, Hydro Seeder, Straw Blower, Root Rake, 2 Trenchers, Ferguson Roller JD 712 Mulcher & much more.

CALL FOR DETAILED BROCHURE

INSPECTION: DAY PRIOR TO AUCTION. 8 AM TILL 4 PM & MORNING OF SALE BEGINNING 8 AM.

\$200 refundable deposit to bid. No Children Please.

TERMS \$200 cash deposit required to register for bidding Payment must be made in full sale day by cash. Cashier's check or wire transfer in U S Funds.

EVERY ITEM SOLD "AS-IS", WHERE-IS"



A Division of Motley's Auctions, Inc. 4402 W. BROAD ST. RICHMOND, VA 23230



(804) 355-2100

FAX - 804-359-6954

http://www.motleysgroup.com VAAF #0016 & NCAL #5914