



**S & J Villari Livestock Feeder Pig Sale**

Gumboro, Del.  
October 12, 1998  
Report Supplied by Auction  
596 HEAD.  
UNDER 30 LBS. 25.00-25.00; 30-39 LBS. 25.00-40.00; 40-49 LBS. 33.00-39.00; 50-59 LBS. 38.00-42.00; 60-69 LBS. 33.00-38.00; 70-79 LBS. 35.00-35.00; 80-89 LBS. 33.00-33.00.

**New Holland Hogs**

Monday, Oct. 12, 1998  
Federal holiday, auction not reported. No report from USDA or auction available.

**Indiana Hogs**

Springfield, IL  
Thu Oct 15, 1998  
USDA-IL Dept Ag Market News  
Indiana-Ohio Direct Hog Flash  
Barrows and Gilts: Steady. Demand moderate with a moderate movement.  
Country Plants US 1-2 230-260 LBS. 27.00-28.00 Few 28.50 & 26.50 28.00-29.50, US 2-3 230-260 LBS. 25.00-27.00 Few 27.50 210-230 LBS. 23.00-25.00  
Sows: Steady.  
US 1-3 300-400 LBS. 13.00-15.00 400-500 LBS. 15.00-17.00 500-600 LBS. 17.00-21.00 Few over 600 lbs. 21.00-24.00  
Boars: over 300 lbs. 9.00-11.00 under 300 lbs. 12.00-15.00  
Preliminary estimate: 35,000

**New Holland Feeder Pigs**

NEW HOLLAND, PA  
WED OCTOBER 14, 1998  
USDA-PA Dept Ag Market News  
NEW HOLLAND FEEDER PIG AUCTION FOR WEDNESDAY OCTOBER 14, 1998  
FEEDER PIGS WEDNESDAY 484 LAST WEEK 303 LAST YEAR 264

TREND: There were not enough feeder pigs sold last week for a good market test. However, this week's trading was active and a higher undertone was definitely evident. Buyer participation was good from small producers for the first time in several weeks. Around 55 percent of supply was sold for slaughter. All pigs weighed on arrival and sold by the hundred weight.

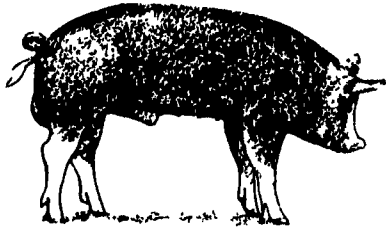
HEAD WEIGHT PRICE US 1-2 29 35-40 lbs 36.00-46.00 50 40-50 lbs 46.00-52.00 28 Pkg 48 lbs 58.00 92 50-60 lbs 46.00-54.00 20 60-70 lbs 38.00-48.00  
US 2 7 25-30 lbs 34.00-44.00 18 35-50 lbs 18.00  
SLAUGHTER 16 14-25 lbs 20.00-30.00 41 30-35 lbs 80.00 (1-2's) 103 30-40 lbs 14.00-22.00 (2-3's) 37 40-45 lbs 32.00-46.00 (1-2's) 44 60-85 lbs 24.00-35.00 As Is 29 10-60 lbs 10.00-12.00  
ALL PIGS CONSIGNED TO WEDNESDAY FEEDER PIG SALE MUST ORIGINATE FROM A QUALIFIED NEGATIVE OR MONITORED HERD.

**State Graded Feeder Pig Sale**

Carlisle Livestock Market, Inc.  
Friday, Oct. 9, 1998

RESULTS ON 1331 PIGS.  
TREND: COMPARED TO FRIDAY SEPTEMBER 25 SALE, DEMAND WAS WEAK, PIGS WERE MOSTLY 4.00 TO 8.00 LOWER. ALL PIGS ARE FROM QUALIFIED OR MONITORED HERDS. THEY WERE WEIGHED ON ARRIVAL AND SOLD BY THE HUNDRED WEIGHT.

US#1&2: 1040 HEAD. 81 HEAD 35-39 LBS. 40.00-42.00; 310 HEAD 40-50.5 LBS. 40.00-42.00; 289 HEAD 51-59 LBS. 39.00-42.00; 292 HEAD 60-69 LBS. 36.00-44.00; 68 HEAD 72-83 LBS. 39.00-40.00.  
US#2: 189 HEAD. 4 HEAD 24 LBS. 42.00; 56 HEAD 30-40 LBS. 32.00-40.00; 51 HEAD 44-49 LBS. 28.00-30.00; 48 HEAD 50-58 LBS. 25.00-30.00; 20 HEAD 63 LBS. 30.00; 10 HEAD 70.5 LBS. 30.00.  
US#2-3: 62 HEAD. 11 HEAD 24.5 LBS. 15.00; 12 HEAD 34 LBS. 17.00; 16 HEAD 44-49 LBS. 19.00-20.00; 23 HEAD 55-89 LBS. 19.00-34.00.  
ASIS: 40 HEAD. 3 HEAD 15 LBS. 5.00; 28 HEAD 35-48 LBS. 9.00-20.00; 9 HEAD 63-69 LBS. 18.00.  
NEXT STATE GRADED FEEDER PIG SALES WILL BE OCTOBER 23. RECEIVING FROM 6:00 A.M.-10:30 A.M. SALE 1:00 P.M.



**Diffenbach Auction Center**

New Holland, Pa.  
Monday, Oct. 12, 1998  
Report Supplied by Auction  
TOTAL LOADS: 130.  
ALFALFA: 120.00-170.00.  
MIXED HAY: 45.00-200.00.  
TIMOTHY: 67.00-167.00.  
ORCHARDGRASS: 60.00-165.00.  
BROMEGRASS: 107.00.  
STRAW: 50.00-135.00.  
EAR CORN: 50.00-95.00.  
OATS: .75-2.50.  
RYE: 3.95-4.60.

**Morrison's Cove Auction Hay**

Morrison's Cove  
Report Supplied by Auction  
Oct. 12  
ALFALFA: 127.50-137.50 PER TON.  
GRASS: 120.00-145.00 PER TON.  
TIMOTHY: 85.00-140.00 PER TON.  
MIXED HAY: 72.00-130.00 PER TON.  
CORN: 60.00 PER TON.  
HAY ALE: 25.00 PER TON.  
AUCTION HELD MONDAY AT 12:30 P.M.

**Wolgemuth Hay**

Leola, Pa.  
Wed., Oct. 14, 1998  
Report Supplied by Auction  
TOTAL LOADS: 36.  
ALFALFA: 97.00.  
ALFALFA BALES: 45.00.  
CORN: 50.00-85.00.  
GRASS: 60.00-122.00.  
MIXED HAY: 112.00-140.00.  
OATS: 2.35-2.40.  
STRAW: 90.00-122.00.  
RYE: 4.00-5.30.  
TIMOTHY: 90.00-170.00.

**Green Dragon**

October 9  
Hay, Straw & Grain  
Report Supplied by Auction  
TOTAL LOADS: 61.  
MIXED HAY: 23 LOTS, 45.00-160.00.  
ALFALFA: 4 LOTS, 35.00-132.00.  
TIMOTHY: 8 LOTS, 45.00-130.00;  
106.00 BY LOAD: 27.00 BIG BALES.  
STRAW: 10 LOTS, 69.00-140.00; BY LOAD 102.00-117.00.  
EAR CORN: 8 LOTS, 64.00-84.00.  
ORCHARD GRASS: 6 LOTS, 50.00-175.00; 17.00 PER ROUND BALE.  
RYE: 2 LOTS, 3.00 BU.

**Westminster Hay Sale**

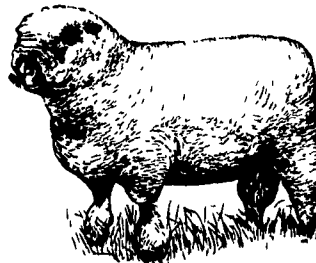
110 LOTS.  
ALFALFA: 2.20-3.40/B.  
ALFALFA MIXED 2.00-3.00/B.  
TIMOTHY: 1.10-3.80/B.  
MIXED: .85-3.65/B; 23.00-25.00 LG RD.  
GRASS MIXED: 1.25-2.80/B  
15.00-18.00 LG. RD.  
CLOVER .95-2.80/B  
STRAW: 1.45-3.00/B.  
RYE: 3.75-5.10/B.

**North Jersey Market**

Hackettstown, N.J.  
Report Supplied by Auction  
Tuesday, October 13, 1998  
Hay-Straw & Grain Report  
ALFALFA 1 LOT, 3.80.  
MIXED HAY: 5 LOTS, 2.40-2.80 BALE.  
TIMOTHY: 8 LOTS, 2.30-3.20 BALE.  
GRASS: 6 LOTS, 2.10-2.60 BALE.  
RYE STRAW: 2 LOTS, 1.80-2.50.  
FIREWOOD: 1 LOT, 30.00 LOAD.  
23 LOADS TOTAL.

**Vintage Hay**

Paradise, PA  
Thurs., October 15, 1998  
Report Supplied by Auction  
ALFALFA 90.00.  
MIXED: 70.00.  
RYE STRAW: 85.00.  
TIMOTHY: 90.00.  
GRASS HAY: 42.00-100.00.  
SALE TIME 12 NOON.



**Carlisle Livestock Market Inc.**

announces  
Taylor Packing will be receiving cows (all types), bulls, and fed cattle and Good Inc. will be receiving all types of calves beginning FRIDAY, OCTOBER 23rd, 11 AM - 3 PM at the Carlisle Livestock Market.  
for more info call Jim (717) 249-4511 or 2359

**CARLISLE LIVESTOCK MARKET, INC.**  
FED and FEEDER CATTLE SALE  
TUES. OCT. 20, 1998 7:00 PM  
20 Angus X Steers and Heifers 500-700 Lbs.  
Early Bird Pens Close 2 PM Turn South Off I-81 Exit 12  
Evenings Jim (717) 249-2359 Market (717) 249-4511

**Carlisle Livestock Market, Inc.**

announces  
Taylor Packing will be receiving cows (all types), bulls and fed cattle and Good Inc., Atlantic, and Nicholas Packing will be receiving all types of calves every Monday 11 AM until 3 PM at Carlisle Livestock Market. Cattle will be weighed at CLM and paid by Taylor's on a Grade and Yield basis. Cost \$10.00 per head  
No additional tracking fee to Packing Plant  
Calves will be weighed and paid for immediately.  
Cost \$4.00 per head.  
For more information contact Jim DeGaetano at (717) 249-4511 Mkt. or 249-2359 home

**PIGS**  
STATE GRADED SALE  
RECEIVING 6-10:30 AM  
FRIDAY  
Oct. 23rd  
1 P.M.  
AT  
**Carlisle**  
LIVESTOCK MARKET, INC.  
Exit 12 Off I-81 turn South  
(717) 249-4511 or  
Evenings Jim, 249-2359

**\$36<sup>34</sup>\*** 50 Lb. BAG  
New New  
**EXCEL 20-20**  
All Milk Replacer  
(Medicated Neo-Terramycin)  
• EXCEL Mixing  
• EXCEL Growth  
• EXCEL Quality  
\* Price Includes 4% Cash Discount Paid 10 Days.

**PENNFIELD GRAIN BANK**

Prices Week Of 10/19/98

Corn	\$2.49 Bu
Soybeans	\$5.50 Bu
Barley	\$1.55 Bu

• Use Grain "Same As Cash"  
• Prices Updated Weekly  
• Grain Back-Hauling  
• No Storage Charges When Applied To Feed Purchases  
• Yearly Statement of Grain Transactions Available

CUSTOMER SERVICE DEPT  
OPEN 24 HOURS  
1-800-995-0333  
pennfield feeds

**Lancaster Farming**

INDEX  
Four Sections

COLUMNS	FEATURES
Now is the Time..... A 10	Bloomsburg Fair..... A 11
Ida's Notebook..... B 4	China's A.I..... A 20
On Being A Farm Wife..... B 5	Lawrence Dairy Show..... A 25
All Gardens..... B 7	Chester Roundup..... A 30
Family Living Focus..... B 9	Manheim Sale..... A 32
Consuming Thoughts..... B 11	KILE Jr. Beef..... A 37
Classified Ads..... C 5, D 2	Frederick Show..... A 39
	Poultry Ambassador..... B 6
	Lebanon Li'l Miss..... B 10
	Manheim Lead Line..... B 14
	Angus Show..... B 16
	Blair Co. Show..... B 18
	Waterford Fair..... B 19
	Crawford Show..... C 4
DEPARTMENTS	HOME AND YOUTH
Editorial..... A 10	Home On The Range..... B 2
Farm Calendar..... A 10	FFA Happenings..... B 5
Futures..... A 16	Homestead Notes..... B 6
Sale Reports..... A 32	Cook's Question Corner..... B 8
Mailbox Markets..... B 19	Kids Corner..... B 10
Public Auction Register..... B 24	You Ask, You Answer..... B 26
Business News..... C 2	

**DAIRY**  
DHIA Focus..... A 29  
Dairy Farm Basics..... A 31  
Dairymen's Newsletter..... A 36  
Top Lancaster Cows..... A 38

**HERE TODAY • HERE TO STAY**  
For Buying or Selling Livestock  
Call Dunlaps at (717) 397-5136

**SPECIAL FEEDER CATTLE SALES**

Slaughter Cattle  
Every Monday 9:30 AM

Feeder Cattle  
Sold in Conjunction with  
Monday Receipts

Receiving  
Market Hogs  
Wednesday  
6:30 AM To 11:30 AM

Sheep & Goats  
Auction Back  
By Popular Demand  
call Jim Hunsicker



Oct. 23 & 30  
Sales Start  
at 12 NOON  
Consignments welcome  
Call Butch Brown  
or Leon Hoover

**Walter M. Dunlap and Sons**  
LANCASTER STOCKYARDS  
An Old Line Commission Firm Dedicated to  
Livestock Marketing for the 21st Century!