

GRABER SUPPLY

491 Gap Newport Pike
Atglen, Pa. 19310

800-964-1550
610-593-3500

... LOCATION...

20 miles East of Lancaster, PA on Hwy 41
or 27 miles North of Wilmington, Delaware

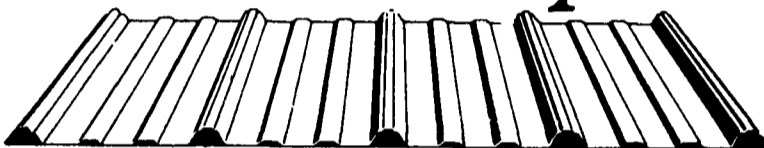
Post & Frame Building Materials Metal Roofing Sale

- Painted Galvanized 29 GA. #2.....\$40.43 sq.
- Prime Painted Galvanized 29 GA.....\$43.59 sq.
- Premium Painted Galvalume 29 GA.....\$46.75 sq.

- 26 & 29 Gauge
- Window Doors
- Insulation
- Overhead Garage Doors
- Electric Openers
- Trusses



Rural Economy



Cost-efficient Centurydrain® roofing and siding is on some of the best looking buildings in the country.

Build with Centurydrain roofing and siding and you've built a money-wise structure. Full-hard, high tensile galvanized steel, and an exclusive drain channel for a dry interior give you a building that'll handle years of hard duty and hard weather. Good looking, too. Crisp lines and plenty of bright, long-lasting colors make Wheeling Centurydrain as handsome as it is economical.

★ ★ Manufacturing Custom Trim ★ ★

MARTIN'S ROOFING
(717) 532-3460

258 Walnut Bottom Rd.
Shippensburg, PA 17257
Rt. 81, Exit 10

KW Pole Buildings



- Horsebarns • Riding Arenas • Livestock Facilities
- Implement Sheds • Storage Buildings • Garages

- ★ Quality Built, Custom Engineered; Agricultural, Commercial and Residential Buildings.
- ★ 20 Yr. Painted Steel Siding & Trims With A Large Selection Of Colors.
- ★ Tl-II, Cedar Board & Batten And Vinyl Siding Also Available.
- ★ Custom Designed Dutch Doors & Horse Stalls.

Call Us For A Free Estimate - Fully Insured

KW Construction

Bethel, PA 19507
(717) 865-0825
1-800-664-3154



For over 30 years...Telmark

Lease financing for the farm and rural marketplace

- New Buildings
- New & used Equipment
- Vehicles



800-451-3322
http://www.telmark.com

\$ WHOLESALE \$

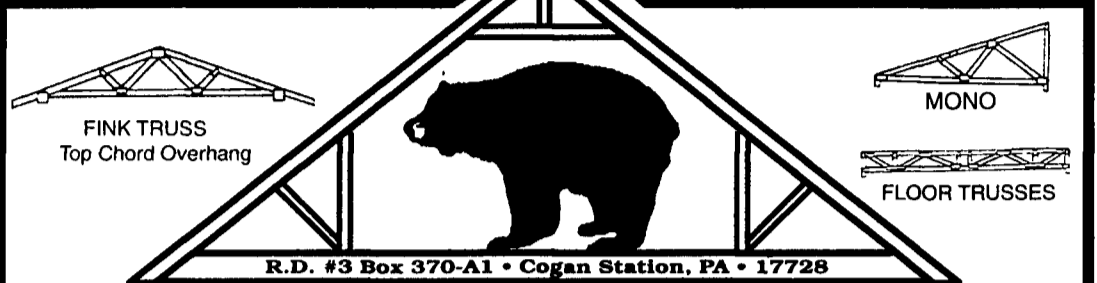
1/2" to 8" PIPE 1/2" to 8"

Prime, secondary, structure pipe
Farmers, Manufacturers, Fabrication
— Will Cut To Your Size Needs —

STEEL TUBING
1 1/2" Sq 3 1/2" Sq 2"x2" Sq 2"x4" Rect
2 1/2" Sq 4"x4" Sq 3"x3" Sq 3"x2" Rect
20' to 24' Lengths 3/16" to 1/4" Thick

BRICKER'S PIPE YARD

1970 Frank Road
Chambersburg, PA 17201
717-261-0095



BLACK BEAR TRUSS CORP.

"OUR TRUSSES BEAR UP"

"Prompt Delivery"



S66 - DOUBLE HOWE SCISSORS



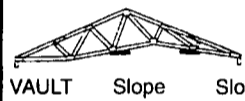
DUAL SLOPE (DOUBLE PITCH)



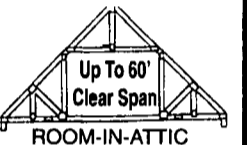
DOUBLE CANTILEVER Bottom Chord Overhang



Up To 60' Clear Span GAMBREL ATTIC



VAULT Slope Slope



Up To 60' Clear Span ROOM-IN-ATTIC



STUDIO WITH TWO BEARING POINTS



UP TO 80' CLEAR SPAN

For Horse Barns • Riding Arenas • Commercial • Residential

Hrs: M-F 6am-6pm; Sat. by appt.



RAISED CENTER BAY

For a FREE Quote Call (717) 998-2391 or 1-800-326-9689

RAKE IN YOUR FALL SAVINGS NOW!



Garage
24 x 24 x 8
\$5,000

Horse Barn/
Equipment Shed
36 x 60 x 10
\$11,950



- Free Brochures
- Free Estimates
- Financing Available



CONESTOGA Buildings

1-800-544-9464

These specials offered for a limited time only. Call us today for details!