

# Bloomsburg Fair Features Shows, Livestock Sale & Governor's Visit

**JUDITH PATTON**  
 Union Co. Correspondent  
**BLOOMSBURG** (Columbia Co.) — Bloomsburg Fair Holstein show winner Melvin Peifer of Lititz got the usual trophies and ribbons plus an unexpected prize — a

chance to meet Governor Tom Ridge. Walking amidst a crowd of fair-goers at the dairy barn, who were given campaign buttons saying "Agriculture for Ridge and Schweiker," Gov. Ridge stopped to meet the grand champion Hol-

stein, East-Knoll Holly Charles Jo, a Junior 3-Year-Old.

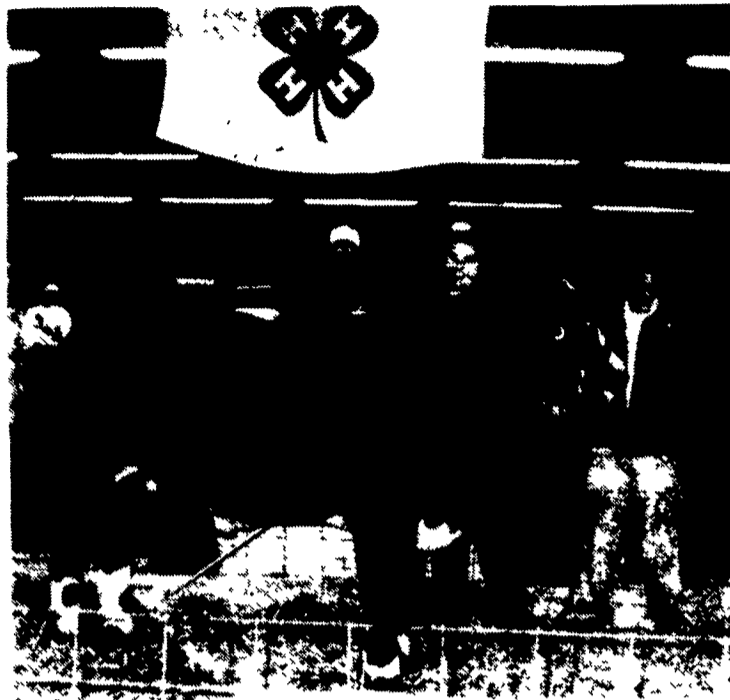
In his speech to the show crowd Gov. Ridge said that small farmers need support from state and federal governments in their struggle to stay in this "tough, competitive business," which he acknowledged is the state's top industry. On the issue of curbing urban sprawl in rural areas, Ridge stated, "We need to have a public debate about where we want land use to go in the next century."

State ag secretary, Samuel Hayes, who was with the governor, said that advances in ag finances and biotechnology are necessary to keep Pennsylvania farmers competitive in a changing economy. "We have to protect the farmers' right to farm," he said.

### Holstein Results

Winning grand champion honors had special significance for Mel Peifer this year, as his mentor, Ralph Sands, marked his 50th year of participation in the show.

Judge Tom Boyer, a dairy farmer and American Breeders Service representative from York, selected these champions from 135 entries shown by 55 exhibitors: grand champion and best udder, East-Knoll Holly Charles Jo, shown by Melvin Peifer, Lititz; reserve grand champion - Elites-JSJ Fac



Janice Bower holds the halter of her grand champion market steer of the Bloomsburg Fair and is joined by Lynn Hummel, representing buyer Hoss's Steak and Sea House.



Lynn Hummel, representing buyer Hoss's Steak and Sea House, congratulates Steve Smith for exhibiting the grand champion market hog of the Bloomsburg Fair.

Feebe, shown by Bryan Hook, Millville; junior champion - Sandsdale Charles Valecia, shown by Harriet Sands, West Wyoming; and reserve junior champion - East-Knoll Charles Jan, shown by Melvin Peifer. The champion bull among five entries was Sandsdale Charles Vidal, shown by Harriet Sands, and reserve went to Rob-Run Storm Macho, shown by Robert Bronson, Bloomsburg.

The top placings were:  
 SPRING CALF 1 Daniel Kenamond 2 Ray and Dawn Wolfe 3 Daniel Kenamond  
 WINTER CALF 1. John and Mary Ann Bonavita 2 Melvin Peifer 3 Janelle Herr 3 Andrew Heebner  
 FALL CALF 1. Harriet Sands 2 Robert Bronson 3 Delaware Valley College  
 SUMMER YEARLING 1 Mary and James Millnon. 2. Randy Wolfe 3 John and Mary Ann Bonavita.  
 SPRING YEARLING 1 Melvin Peifer 2 Daniel Kenamond 3 Randall and Patricia Kitchen

(Turn to Page A34)

## The Building you want. The Lease you need.

Telmark has been leasing equipment for over 30 years. Did you know that we've been leasing new buildings for that long too? Consider:

- **Tax deductibility and accelerated write-offs:** Lease payments are income tax deductible over the term of the lease compared to 20-year depreciation of farm buildings and 39-year depreciation of commercial buildings. **Could reduce tax liability this year.**
- **Low upfront costs:** Beginning costs as little as one monthly lease payment.
- **Flexible lease term:** Building lease terms start aggressively at five years but may be as long as ten, twelve, or fifteen years.
- **Customized payment schedules:** Lease payment schedules are specially designed to match your cash flow.

**First:** Talk with a qualified builder to determine your needs and building cost.  
**Then:** Call your Telmark representative for your financing.

<b>Ken Darlington</b> PA,NJ,MD,VA,WV 610-793-0150	<b>Michele Bogucki</b> PA,MD,VA,WV 717-244-3665	<b>Sue Beshore</b> PA,MD 717-932-1715	<b>Doug Snee</b> Southwest PA,WV 724-627-5941	<b>Andrew McLean</b> Delmarva 410-827-5052	<b>Elizabeth Anderson</b> Delmarva 410-651-4128
<b>Mike Dixon</b> Southeast PA,MD 814-684-5707	<b>Fred Dixon</b> Northwest PA 724-346-3455	<b>Mike Fullam</b> Central PA 717-966-9202	<b>Frank Hunter</b> Northwest PA 716-595-3954	<b>Lisa Francisco Sonnen</b> Northeast PA, North NJ 717-866-9217	

**TELMARK**  
 www.telmark.com  
 800-451-3322

### Mahoning Outdoor Furnaces

Cut Your Heating Costs With Our Outdoor Furnace

- Standard Model Burns Wood, Coal or Wood by-products
- Multi-Fuel Model Burns Wood Coal, Oil or Gas

Adapts to any existing heat system Installation & Accessories Available

**DOUGLAS FISHEL**  
 Gettysburg-New Oxford  
 (717)624-3639 (717)624-4188

**LEBANON VALLEY ENTERPRISES, INC.**  
 Manufacturing • Powder Coating • Precast

- X Adjustable neck opening for calf to cow
- X Auto Release for downed cows
- X Baked on high gloss, high impact and acid resistant TGIC polyester powder coating
- X No springs to rust or wear over time
- X High Quality
- X Affordable Prices
- X 1 9" OD top and bottom rail 1" sch 40 uprights
- X 20 year rust thru guarantee



## HEAD LOCK

P.O. Box 187, Myerstown, PA 17067 • (717) 866-2030

Call us for your nearest Dealer!