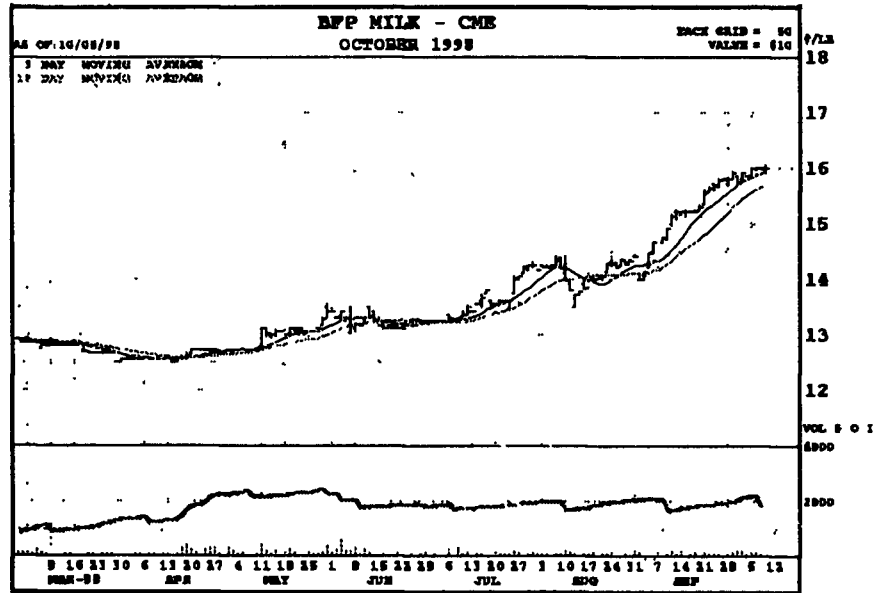
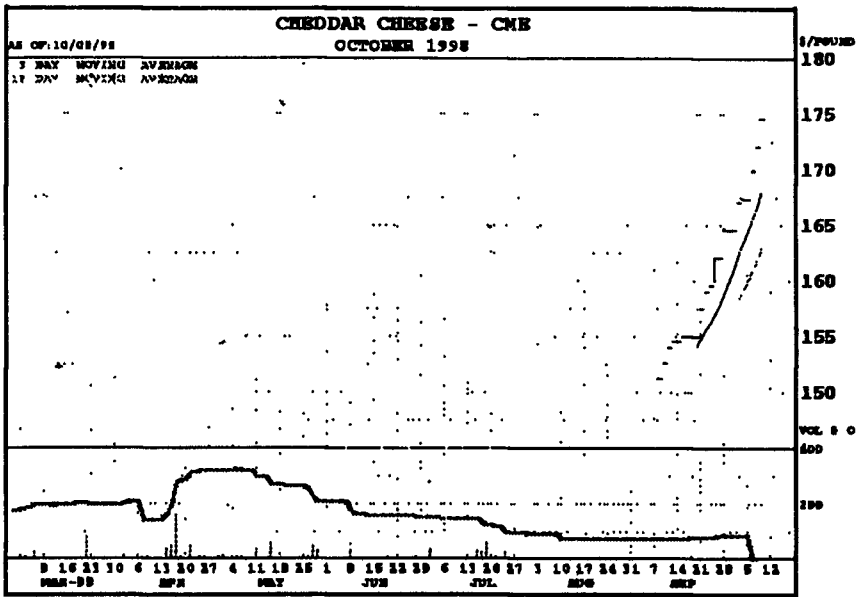


# FUTURES MARKETS

(Continued from Page A16)



Symbol Open High Low Last Chge  
CFV8 - 10/08/98 174500 174500 174500 174500 +2500

Symbol Open High Low Last Chge  
BKVB - 10/08/98 1595 1603 1594 1599 unch

Moving Average Momentum  
Day 09 18 40 Day 09 18 40  
1591 1569 1496 +20 +79 +228

## THANK YOU TO THE 1998 SOLANCO FAIR LIVESTOCK BUYERS

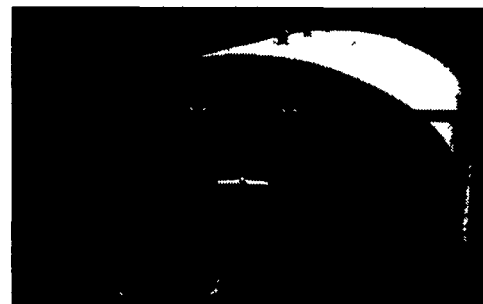
Grand Champion Steer: Ferguson and Hassler  
Reserve Champion Steer: Shady Birch Farms  
Grand Champion Lamb: First Union National Bank  
Reserve Champion Lamb: Richard T. Witmer Inc.  
Grand Champion Hog: Farmers First Bank  
Reserve Champion Hog: Hostetter Grain

Powl's Feed Service  
Musser's Market  
Herr Hope Farm  
White Oak Farm  
New Holland Sales Stables  
Bank of Lancaster County  
Deer Creek Equipment  
Jerome H. Rhoades, Inc  
Keystone Farm Credit  
State Representative John Barley  
Star Rock Farms  
Blue Ball National Bank  
Groff and Groff Lumber  
Strickler's Barber Shop  
Lancaster Ford Tractor  
Nostalgia Oak Warehouse  
Central Manor Bakery and Grille  
Mainline Photography  
Duncan Remodeling and Restoration  
Welk's Custom Butchering  
Walnut Hollow Custom Farming  
Prange's 222 Service Center  
Quarryville Herd Health Associates  
Stoltzfus Feed and Supply  
Quarryville Family Dentistry  
Two Cousin's Pizza  
Champion Leasing  
Maplehoof Dairy Store

Weaver Insurance  
Herr and Leaman  
C B Hooper Inc  
Hatfield Packing  
James Hostetter CPA  
Rye Ridge Farm  
Paul Risk Associates  
Larry Housekeeper  
Creek Cattle Co  
Welk-Crest Holsteins  
Sunrise Deli  
Triple H Equipment  
Fulton Bank  
Prevent Distributors  
Edgefield Farms  
Edgar M. Herr Inc  
Hess Mills  
Huber Builder's  
Agway Inc  
Risser Grain  
James G Kreider  
Paul H Campbell  
Ag Industrial Inc  
Curt and Ruth Akers  
Roy Stoner  
Bob Kauffman  
Linda Pyle  
Earl Strawser

Lloyd Kreider, Larry Whyte, Randy Ranck Auctioneers

## GIANT FACTORY SALE HEAVY DUTY STEEL BUILDINGS



SAVE UP TO 50%



- Equipment storage
- Workshops
- Hay and animal shelter

Available models:  
25 x 32 (2 left) 45 x 90 (1 left)  
30 x 44 (3 left) 50 x 100 (2 left)  
40 x 62 (4 left) 55 x 150 (2 left)



Factory Direct 800/825-5059

BUY, SELL, TRADE OR RENT THROUGH THE CLASSIFIED ADS IN Lancaster Farming

PHONE 717-626-1164 OR 717-394-3047 FAX 717-733-6058

Mon., Tues., Wed., Fri. 8 AM to 5 PM Thurs. 7 AM to 5 PM

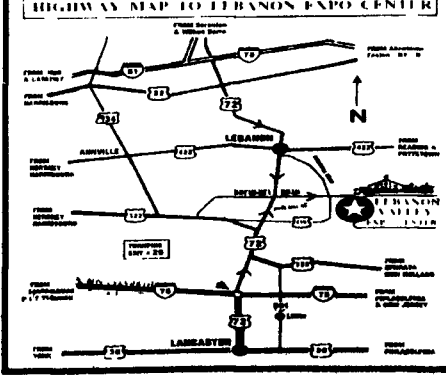
## DO YOU?

MAKE THINGS WITH LEATHER SUCH AS...  
WALLETS - ENGLISH & WESTERN SADDLES - HARNESS  
PICTURES - BOOTS - GARMENTS - PURSES - BELTS  
REINS - HEADSTALLS - HOLSTERS - LUGGAGE  
BRIEF CASES - FINE ART - GLOVES - ETC...

YOU ARE CORDIALLY INVITED TO THE  
**EASTERN LEATHERWORKERS TRADE MARKET**  
Lebanon, Pennsylvania October 16 - 17 - 18  
Lebanon Valley Expo Center  
*Everything for your leather shop under one roof*

All kinds of leather,  
Leather Machinery - New and Used Leather Hand Tools  
Custom made Stamping Tools - Head Knives - Edgers - Creasers  
Bevelers - Leather Care Products & Conditioners - Dies  
Clickers - Sewing and Stitching Machinery - Saddle Schools - Hardware  
Buckskin - Sharpening Equipment - Buckles - Saddle Trees - Exotic Leathers  
Boot Lasts - Tanneries Reps - Swivel Knives - Silver

PLUS SEMINARS & WORKSHOPS  
CALL OR SEND FOR FREE INFORMATION PACKET  
Bring the Entire Family



Sponsored by  
**THE LEATHER CRAFTERS**  
SADDLERS JOURNAL  
331 Annette Court  
Rhinelander, WI 54501  
**(715) 362 5393**

## Sell your beans?

**"It just doesn't make sense"**

1. Why lose the 18% high energy oil in your own beans?
2. Why let the soybean processor take the valuable lechicin?
3. Why forfeit 50% of the metabolizable energy over SBM?
4. Why pay storage, trucking and shrink?

**Be sensible!  
Let SCHNUPP'S custom roast your Soybeans**

Receive the value of added fat in your ration - MORE MILK  
Get the most By-Pass Protein available in your beans - MORE PROTEIN UPTAKE  
Keep all the nutritional components originally in the soybean. - MORE FLEXIBILITY  
Soybeans are valuable, keep profits at home! - MORE FARM INCOME

David N. Groff  
RD 3, Lewisburg, PA (717) 568-1420