

THE OPPORTUNITIES ARE

HIS DEALER GOES THE EXTRA 112 MILES - DOES YOURS?



"What really impresses me is that if I have a problem, it doesn't take Hooper long to fix it. Hooper mechanics are specialized, so no matter what machine it is, there isn't a problem they haven't seen. Plus they care about getting you up and running fast. That's important."

Richard Beachel, August 1998

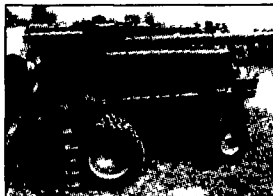
Richard Beachel's luck wasn't running real high. It was harvest and he found himself stuck in the field with a combine that was inoperable because of a blown hydraulic hose. Richard called Hooper's McAlisterville dealership, but they didn't have the part in stock.

However, Hooper's parts manager at McAlisterville called the Intercourse location and discovered they did have the hose in stock. Because it was in

the middle of harvest, Hooper knew Richard needed the part today, not tomorrow. So Hooper's airplane delivered the hose to Richard in less than two hours from the initial call. The hose was replaced and Richard was harvesting again.



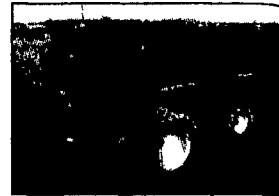
USED COMBINES



B 15468 CIH 2188 4WD Combine, 1997, 929 Hours, 18.4x38 Drive Tires, 18.4x26 Steer Tires, Spec Rotor, Rock Trap, Chopper, Field Tracker, Chaff sprdr



A 21374 CIH 1660 2WD, 1989, 2078 Hrs, 2 Speed Hydro, Rock Trap, A6 Leader Monitor



B 15636 CIH 1660 2WD Combine 1991, 1500 Hours, 18.4x38 Drive Tires, 14.9x24 Steer Tires, Spec Rotor, Chopper, Deluxe Seat, Incl bin auger



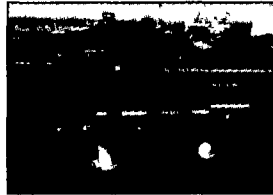
A 20240 IH 1480 2WD Combine, 1984, 3587 Hours, 30.5x32 Drive Tires, 18.4x16.1 Steer Tires, Spec Rotor, FDR Rev, Auto hdr ctl, Accumulator



A U1001 IH 1480 2WD Combine, 1983, 5127 Hours, 30.5x32 Drive Tires, 18.4x16.1 Steer Tires, Spec Rotor, Auto hdr ctl, Accumulator



B 15098 IH 1460 2WD Combine 1984, 2191 Hours, 30.5x32 Drive Tires, 18.4x16.1 Steer Tires, STD Rotor, Chopper, Rock Trap, GLM Auto hdr ctl



B 15501 JD 9600 4WD Combine, 1992, 2200 Hours, 18.4x38 Drive Tires, 18.4x26 Steer Tires, Hydro, Rock Trap, Chopper, Chaff Sprdr, Rotary Air Screen



B 15624 JD 9500 4WD Combine, 1991, 1535 Hours, 30.5x32 Drive Tires, 18.4x26 Steer Tires, Hydro, Rock Trap, Chopper, Chaff Sprdr, Rotary Air Screen



A 15295 JD 9500 2WD Combine 1991, 1495 Hours, 30.5x32 Drive Tires, 14.9x24 Steer Tires, Hydro, Rock Trap, Chopper, Chaff Sprdr, Rotary Air Screen

ADDITIONAL USED COMBINES

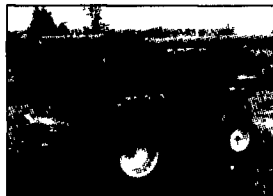
- JD COMBINES**
- B 16367 JD
- B 15655 JD
- A U9841 JD
- B 13422 JD
- A U9639 JD
- A U9764 JD
- A U9922 JD
- B 15158 JD
- OTHER COMBINES**
- A U9184 MF
- A 21439 AC
- A U1043 AC
- B 16591 AC



THE 1680 IS THE HEAVYWEIGHT BARGAIN

40% MORE PRODUCTIVITY, 5% MORE MONEY

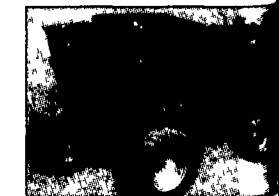
- Productivity In All Conditions At A Great Price
- Perfect For Any Size Operation
- Wider Feeder, Bigger Rotor, Larger Cleaning & Separating Area Makes It Better On Hillsides
- Wider Wheel-Base For Stability
- Better In Wet Conditions Than Combines With Cylinder & Concaves
- More Horse Power Drives A Larger Rotor & Provides High Capacity & Efficient Operation
- Larger Rotor & Feeder Lets You Harvest 40% Faster Than With A Smaller Rotor Combine With The Same Size Head
- Larger Grain Tank Means You Can Run Longer



B 13922 CIH 1680 4WD, 1991, 2850 Hours



B 16083 CIH 1680 4WD, 1992, 1700 Hours



A 20963 CIH 1680 2WD, 1992, 2975 Hours



FARM MACHINERY RUNS BETTER WITH



Authorized UPS Station

All New & Used Products Backed By Hooper Parts & Service

VISIT OUR WEBSITE: www.hooper.com