

**Duratorque-  
Bias Ply Rear Farm Tire**

13.6-28  
6 Ply

**\$199**

14.9x28  
6 Ply

**\$259**

Other Sizes



- Long wear and durability from the braced lug design
- Easy lug cleanability

- Excellent roadability provided by the overlapping lugs in the center
- Traction in a wide range of sizes due to the long bar design

**DT710 Radial  
Goodyear's Smoothest  
Riding Rear Farm Tire**

184R34★

**\$499<sup>00</sup>**

Other Sizes Available



- Minimum vibration and smooth ride provided by multi element tread
- Excellent traction from the increased lug count
- Unmatched traction performance in dry soil conditions

**Super  
Traction  
Radial**

16.9 R30

**\$649<sup>00</sup>**

Other Sizes Available



- Self-cleaning tread action promoted by 45 degree tread lug angles
- Up to 25% deeper than conventional R-1 tires

**Dyna  
Torque  
Radial -  
Major Savings In  
Time And Fuel  
Costs**

184R38★

**\$559<sup>00</sup>**

Other Sizes Available



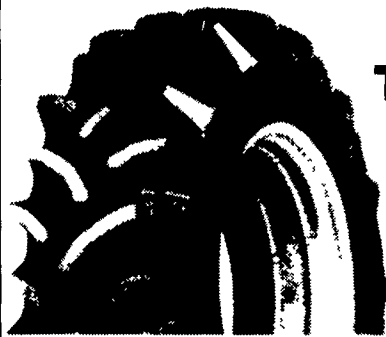
- Reduced vibration in field and road service
- Improved traction from the 3 pitch tread design

**Dyna  
Torque II  
Excellent  
Drawbar Pull  
For High  
Torque  
Tractors**

155-38 6 Ply

**\$269<sup>95</sup>**

Other Sizes Available



- Reduced vibration in field from the long bar/short bar design
- Excellent roadability



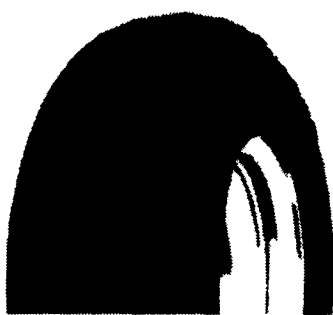
**Triple Rib  
HD - Front  
Tractor Tire For  
Precise  
Steering  
Stability And  
Long Tire Life**

550-16  
4 Ply TT

**\$43<sup>95</sup>**

Other Sizes Available

- Improved steering in loose, cultivated soil provided by the deep, wide center ribs
- 3 rib design provides excellent steering capabilities



**Farm  
Utility**

- Outstanding flotation
- Easy steering from the heavy grooved ribs

**\$46<sup>95</sup>**

11L15 8 Ply TT

Other Sizes Available



**Rib  
Implement  
Tire**

Easy Operation  
For Many  
Types of Equipment

670x15 6 Ply TT  
**\$49<sup>95</sup>**

Other Sizes Available

- Easy rolling resistance with the 5-rib design
- Designed for dependable on/off highway service



**IT510  
RADIAL**

175 LR 24 8 Ply

**\$549<sup>00</sup>**

- Maximum traction supplied by additional biting edges from the overlapping lug/block pattern
- Flotation and traction provided by a larger contact patch



**Industrial  
Sure  
Grip**

149x24 8 Ply

**\$279<sup>00</sup>**

Other Sizes Available

- Reinforced lugs for industrial use
- Aggressive tread design



**Ultra  
Grip  
Lug**

10-16.5 8 Ply

**\$95<sup>00</sup>**

Other Sizes Available

- Premium skid steer tire
- For heavy duty applications

**LABORER**

Heavy Duty Industrial Tractor Front  
Wheels 11L-15 8 Ply

**\$89<sup>95</sup>**

OTHER SIZES AVAILABLE



**Industrial Tires  
IT525 Bias - Improved  
Traction And Handling  
175L-24 - 8 Ply**

**\$269<sup>00</sup>**

Other Sizes Available

Zimmerman Farm  
Service  
School Rd  
Bethel, PA  
717-933-4114

Donald B. Rice  
Tire Co.  
909 East St  
Frederick, MD 21701  
1-800-950-0550

Bastian Tire Sales  
R2603 Reach Road  
Williamsport, PA 17701  
1-800-362-5279

Bastian Tire Sales  
Rt 11 & 15  
Shamokin Dam, PA  
1-800-326-9465

Horlacher &  
Sherwood  
153 E Tioga  
Tunkhannock, PA  
717-836-1116

BHM Farm  
Equipment  
RD 1 Rt 934 North  
Annville, PA  
717-867-2211

Service Tire Truck  
Centers, Inc.  
1601 Manheim Pike  
Lancaster, PA 17604  
717-569-8473

Service Tire Truck  
Centers, Inc  
3403 Concord Road (PIE Building)  
York, PA 17402  
717-755-8473

Service Tire Truck  
Centers, Inc.  
1201 S. Cameron St  
Harrisburg, PA  
717-238-8473

Neatons Tire  
25 East Ave  
Easton, MD  
1-800-317-6152

Lebanon Valley  
Imp. Co.  
700 E. Linden St  
Richland, PA  
717-866-7518

Dices Tire Shop  
1421 Lincoln Way  
Chambersburg, PA  
717-264-9312

THE BEST TIRES IN THE WORLD HAVE **GOODYEAR** WRITTEN ALL OVER THEM

