

Public Auction Register

Closing Date Monday 5:00 P.M.

of each week's publication

Internet Sale Register will be updated every Sat. at 2:23 P.M.

FRI OCT 30 - 9AM, Real Estate at 2PM Household Goods & Antiques At 1615 Magnolia Dr. turn off Rt 462 E in Bridgeport on

Lampeter Rd 1 mile to Magnolia Dr, turn left, West Lampeter Twp, Lanc Co, Pa by Anna E Foutz Estate Robert E. Jeffery R & Michael L Martin, aucts

FRI OCT 30 - 9AM A & C Diffenbach Auct, Inc, 100 W Jackson St, New Holland, Lanc Co, PA Ann Fall Auction of Trucks, Trailers & Construction Witman, Aucts

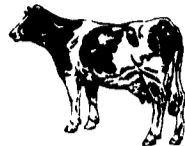
FRI OCT 30 - 130 PM Valuable Personal Property & Antiques At 26 S Spruce St, Lititz, PA For Hennessey Stoner Elmer Murry Auctions Inc

FRI OCT 30 - 530 PM Real Estate, household items & collectibles 45 miles NW of Harrisburg, Pa. 8 miles E of Mifflintown, Pa in the village of McAlisterville, PA H Irene Kennedy, owner Robert L Leitzel, Tim Kline aucts

Special Dairy Sale

Tues., Oct. 20, 1998 - 12:30 PM

Herd Consigned From Leroy Freed Sunbury., Pa.



Reason for selling wants to semi-retire after 40 years in the dairy business. Herd consists of 51 cows, including 6 Red Holsteins in various stages of lactation. Also 10 Bred heifers - 1st calves due No. and Dec. All home raised with DHIA records.

Herd Avg. 17720 lbs.

Tested Aug. 30, 1998 for Brucellosis and TB. This is a certified and accredited herd. Plan to attend this sale.

Information call Middleburg Livestock Auction 717-837-2222

MIDDLEBURG LIVESTOCK AUCTION, INC.
RR #3, PO BOX 185 Middleburg, PA
17842(717) 837-2222 (717) 837-2512

FREDER FARMS DISPERSAL FRED AND DEAN STRUSSENBERG FARM MACHINERY AND DAIRY EQUIPMENT SAT. OCT. 24, 10:30 A.M. "1626 Walker-Lake Ontario Road" HILTON (MONROE CO.) NEW YORK (20 Miles west of Rochester)

The farm is located on State Route 260, in the Township of Hamlin, 1/2 mile north of State Rte. 18 or 4 miles south of the Lake Ontario State Parkway. FROM THE SOUTH: Take I-390 north to 490 west to 531 west to 31 west to 260 north.

Having recently sold the dairy and taken off farm employment selling will be:

1995 Case I.H. 7210 Magnum, MFWD, 18.4X42 rear tires, 2 p.t.o.s., 3 hyd. Remotes, app 1800 hrs.; Case 1840 diesel skid steer, 2 buckets, pallet forks, 4 1/2 ft manure forks, and 6 ft. snow bucket, 5100 hrs.; White 2-135 tractor, cab, MFWD, (red stripe) 2 remotes, 21.8xR38 rubber, app. 10,000 hrs.; White 2-60 diesel tractor; Two (2) Ford 5000 diesel tractors 1 with 16.9x38 rubber, 1 with 18.4x30 rubber; Deutz 100-06 4x4 tractor with 2 remotes and Oliver loader; Deutz DX 110 tractor, MFWD, 2 remotes, 2 p.t.o.s., 18.4xR38 rubber; Oliver Super 77 gas tractor wide front, 12 volt, 13.6x38 rear tires and N.I. 504 all hyd. Loader with bucket; Set of 18.4x38 snap on duals with hardware; Set of 23.1x30 duals; 1-18.4x38 dual; Set of 30 in. 4 roller combine tracks with sub frame (currently set for 801 Uni-Combine) will work on other combines; 1973 I.H. 2010 ten wheel truck, gas engine, air brakes, 21 ft. dump body; 1974 Chevy C60 truck with 17ft dump body; 1975 Dodge 600 truck (not running) with 16 ft. dump box; 1972 Ford flat bed truck; Unverferth 6-row zone till cart (like new) with 750 gal. Fert. Tank and pump; J.D. 1018 10 ft. offset rotary mower; Killbros 500 bu. Gravity (box only); Hesston 5530 round baler; N.H. 326 baler with 72 thrower; J.D. 672 hyd. drive rake; N.H. 56 rake; N.H. 55 rake (bad gear box); N.H. 415 discbine (rough); N.H. 469 haybine for parts; Smalley 36 ft. bale-grain elevator; 36 ft. skeleton elevator; Feterl 12 in. rotary grain cleaner; N.I. 729 sheller unit; (3) N.I. 818 combine units for parts; 2400 gal. And 1000 gal. poly tanks; 200 gal. Fert. Tank, front mt.; Lightfoot app. 1000 lb. Tow behind fert. Spreader; 3 pt. Fert. Spreader; Killbros 6 in. x 12 ft. hyd. auger; Westfield 8 in. x 61 ft. grain auger; Westfield 7 in. x 51 ft. grain auger; J.D. 785 hydra-push manure spreader; White 549 6x18 plow with spring coulter; Brillion 20 ft. danish tooth field cultivator; McConnell 3 pt. 12 row cultivator with 2 squeeze pumps; I.H. 470 14 ft. transport disk; Jawn 3 pt. V-ditcher; Gehl 1580 (1000 rpm) blower; N.H. 892 chopper (bad drive line) with 2-row corn and grass heads; H & S 7-4 16 ft. forage box on tandem gear; N.H. 716 16 ft. forage box on tandem gear; (2) Farmhand dump boxes; 2-Farmhead axles; (2) old forage boxes; 2 wheel trailer; Gravity box wagon (4) running gear wagons; Hardi 300 gal. Sprayer (as is); White 5100 6-row planter (seed boxes only); Century 250 AC-DC welder; Campbell Housfield 6 h.p. verticle air comp; 42 ft. Storage van;

DAIRY/BARN EQUIPMENT/BINS: Delaval 2000 ga. Bulk tank with sight gauge, (calculates to 17,700 lbs.) with 2-5 h.p. compressors (tank serial #82836); 3 in. glass "highline" parlor with 12 auto takeoff arms; Westfalla 12 DeLaval Flo-Vu double pulsation units; 12 DeLaval weigh jars; (2) Boumatic 5 h.p. vacuum pumps; 120 ft. heifer headlocks in 10 ft. sections 10 locks/section; 140 ft. cow headlocks in 10 ft. sections, 5 locks/section; Butler 230 TMR (Stationary) unit with scale; Storagemore "Ezee Dry" 1.p. ton tape bottom bin; Rotofeeder for 18 ft. silo (goes around the silo); Jamesway 40 ft. single chain feed elevator; Jamesway 24 ft. nng dr. silo unloader; 8000 gal. Tank; portable fuel tank; parts washer, 3 h.p. roller mill; 48 ft. belt conveyor, 80 gal. Water heater; (25) freestall loops, (15) calf TEL hutches; AgroPlus 3 pt. Bedding chopper; Lancaster silage distributor; 4 box fans; Misc. gates; Agway breeding wheel;

NOTE: 400 acre farm for sale private treaty, will divide! Something here for every kind of farmer! See you at Strussenberg's on the 24th! Lunch and comfort facility on site

Terms: CASH or honorable check day of auction! Out of state persons not known to auction company must present proper bank letter for immediate removal privileges. nothing to be removed until settled for in full.

OWNED BY FREDAR FARMS

For Info. Contact Dean Strussenburg 716-964-2676

Auction Conducted By
James P. Pirrung and Associates
PIRRUNG AUCTIONEERS, INC.
Wayland, New York 14572
Phone 716-728-2520 Fax 716-728-3378

Exceptional Public Sale

(500) Lots of Quality Antiques/Collectables

Antiques-Civil War Items-Military & Political items-Windup Toy Collection-Vintage Baseball Cards-Crocks-Coins-Stamps-Postcards-Autographed items-Advertising Items-Hummel Figurines-Nazi Uniforms & Dagger Collection-Slot Machines-Coin Operated Machines-Lionel Trains-Kentucky Rifle-Elvis & Beatles org. Items-Furniture-Animal Mounts-Limoges Collection-Oak Telephone-Zepplin Items-Juke Box-Ivory Collection

Sat., October 24th, 1998
Time: 8:30 A.M.

Sale to be held at the Lisburn Comm. Fire Co. pavilion Lisburn, Pa. If traveling on I-83 use exit 18, take Rt. 114 west for 5 miles or traveling on Rt. 15 use the Bowmansdale exit, take Rt. 114 east of 6 miles to sale. Sign posted.

Antique/Collectables/Slot Machines/Juke Box /1 of a kind '30's Ganster Slot Machine (hand carved wood) etc.; Trade simulator, vintage \$.05 Weight scale; 2000 lb Water Buffalo mount; beautiful Oak claw foot table, RCA Victrola (work perfectly); 6 older Hummel figurines; beautiful "One More Time" 1015 Juke Box (Look & sound great); Oak telephone (mint); nice collection of Limoges porcelain from the turn of Century (perfect cond) 1940's & '50's Lionel trains, various crocks & jugs (decorated); beautiful hand carved Ivory figure, nice Dresden porcelain candle holder; Civil War Items/Guns, Kentucky Rifle (percussion), 1816 Harper Ferry Flintlock musket, 1864 Parker Snow & Co musket, Colt navy revolver, Foot Officer's sword, Cavalry Saber, GAR items, beautiful GAF flag professionally framed, swords, approx 100 lots of quality Civil War items. Political items; 1960 autographed JF Kennedy letter, approx 50 lots of quality Political items; Nazi/Military items; German helmets, Officer's visor, medal, Luftwaffen daggers, RAD officer's dagger, Glider Troop poster, U.S WWII complete combat uniform, approx 100 lots of quality militaria. Vintage Baseball cards/Collectables; 100's of 1950's & 60's Baseball & Football cards (Topps-Bowman) Plenty of Hall of Famer's, 1951 autographed Yankee Jersey (Mickey mantle). Auto. Litho; M Schmidt auto. Litho. Hank Aaron & Pete Rose autographed jerseys (framed), plus other items. Postcards-Coins-Stamps & Autographs: 100's of postcards (old) Harrisburg, Local, Santa Claus etc.; over 80 silver dollars, 3 Zepplin covers, 50 lots of small collectables. TOYS: JD 4430 pedal tractor, 1940's & '50's Lionel trains sets, Charles Lindbergh Spirit of St Louis airplane, nice 1920's Arcade cast iron truck. (Marx: Honeymoon Express, Roy Rogers tin toy, Donald Duck tin toy, race car, tractor, Roll-over-Pluto tin toy. PLEASE NOTE: All vintage toys look & work perfectly, 1050's & '60's org Elvis records, Org Beatle Mags records This in only a very small list of items

Auctioneer note: Lots of nice items on this sale preview of items morning of sale only. Doors open at 7:00 A.M. Terms of sale: Cash or good personal Pa checks w/proper ID. No out of state checks

Refreshments by Fire co Ladies Auxiliary Not responsible for accidents Private Collection.

Little IKE Eichelberger Auctioneer
Pa. Lic. #Au. 1954-L

Now booking all types of public sales.
Ph. Dillsburg 717-432-0006

PUBLIC AUCTION

Antiques, Furniture, Court Cupboard, Collectibles, Elliot Grandfathers Clock, Radio's, Glassware

Wed. Oct. 14 3:00 PM

Held at TYLERSPORT FIRE HOUSE, RT 563, Tylersport, Pa.

DIRECTIONS: From Rt. 309, take Perkasio exit to Rt. 563 (Ridge Rd.), go South 3 miles to Fire House. From Lansdale exit of Pa. Turnpike, go West on Rt. 63 approx. 6 miles to Rt. 563 North go 4 miles to Fire House.

FURNITURE: Walnut Court Cupboard, ELLIOT Grandfather's Clock, grain ptd. dry sink & blanket chest, Vict. side chairs, platform rocker & jelly cupboard; slant front desk, Marble top Wal. bureau & wash stand, candle stand, wall cupboard, blanket chest, (2) bowfront china closets, washstand, farm table, (2) birdcage tables, high chair, iron floor & table lamps, PB chairs, wall tables, Mahg. BR suite, drum table, school desk, CI patio set, pictures & frames, rockers, wool area & american oriental rugs, drop leaf table, vanity, (3) mantle clocks, oyster shell table lamp, Miller pump organ, C.B. & flat trunks, ETC.:

ANTIQUES & COLLECTIBLES: (6) stoneware milk pitchers, Flow blue pcs., Meissian meat platter & covered tureen, art deco brass vase w/sterling inlay, blue decor. crock, other crocks & jugs, (2) Hummels, redware, I. Stahl pottery, cut glass, art pottery, kero lamps, sterling silverware set, sterling candle holders, Sheffield tea set. CI door stop, teapots, Pink Rose tea set, Rockwell stemware, 200 pc. Pink Rose china, J.E. Caldwell & Co. china, Haviland Limoges China ser/12, German spice set CI frogs, mixing bowls, sad irons, Chapman Rail Road sign, MANY kitchen utensils, brass bells, Walham & Elgin pocket watches, Imens & lace, coverlet, quilt, early SAMPLER, beaded purses, wdn. bowls & baskets, Rayo lamp, coo coo clock, transfer ware, B & G plates, local advertising material, ad tins, postcard album & postcards, Picture album, balance scale, over 35 RADIO'S from 1930's to 1960's including Airline #93, Crosley, Emerson, Atwater-Kent, G.G., jewel, R.C., CALL for complete list; Griswold fry pans, spear head, st. razors, pocket knives, oyster shell grinder, brass bells, Violin, candy containers; FURNISHINGS, ETC.; modern Grandfather's clock, BR suites, bureaus, high boys, plant stands, coffee tables, desks, mag. racks, cedar chests & wardrobe, kitchen table & chairs, sewing machines, gone-w-the wind lamp, hutch, CI repro. banks, ERTAL & HESS TRUCKS, throw rugs, (3) CI stoves.; Uprt. freezer, Hot Point side by side refrig. other refrig., G.E. washer & Maytag dryer, microwave,

H.H. ITEMS: White riding mower (like new), Dynmark & Alis Chalmers riding mowers, VCR, Stereo sets, ETC.

INSPECTION after 1:30 day of auction.

TERMS: CASH OR PA CHECK.

FOOD AVAILABLE

RALPH D. FREED, AUCTIONEER
AU000294-L

215-822-2826 OR 610-287-8901

ZV ZIEGLER-VALENTINE COMPLETE AUCTION SERVICE PUBLIC AUCTION

Saturday, October 24, 1998 - 9 a.m.

Doors open at 7 a.m.

East Granada Ave., Hershey, PA - across from the Hershey Theatre

LIQUIDATION OF ENTIRE CONTENTS FORMER DERRY TOWNSHIP MIDDLE SCHOOL

TABLES Wooden; Metal; Long; Round; Corner; Adjustable; Small; Square; Typing; Art; Art/angled; Half moon; Science; Single pedestal; Computer; Folding; Kitchen; Octagon; Library; Drafting; Projector; TV

OFFICE EQUIP Typewriters - some IBM electric; Overhead projector; IBM Dummy Computer; terminal; Computers; Okidata Printers; Epson Printer; copy machine; Microfiche machine; Various Printers; Computer Monitor; Answering machine; Telephones; Office Dividers.

CHAIRS Wooden; Metal; Leather/Plastic; Stools; Teachers; Students; Rolling; Folding.

STORAGE Wooden; Metal; Credenzas; Filing cabinets; Book shelves - some w/glass; Sectional shelving; Cabinets; Student Lockers; Hanging cabinets- some with glass; Acid cabinet; Medicine cabinet; Book cube; Hutches; Boxes on Wheels.

DESKS Wooden; Metal; Sgl/Dbl. Pedestal; Teachers; Student; Combo; Privacy.

WOOD SHOP Elec. hacksaw; Oak/Cedar wood; Paper cutter; Work benches; Misc. Hardware; Table saw; Lg. sander; Planer; Combo Lathe/drill press; Metal lathe; Jigsaws; 3 phase drill press; Construction books and tapes; Various paints and tools; Elec. lamp switches; Angle iron; Gas cabinet; Stretcher back brds; Sheet metal; Masonite sheets; Paper press; Pipe bender

MISC Pianos; Podiums; Braille Books; Power strips; Wooden beads; Learning Materials; Hearing test machine; Maps; Globes; Movie Screens; Chalkboards; Refrigerators; Kilns; Sewing machines; Old Nat'l Geo. Mags; Encyclopedias; Band Uniforms; Tripod; Mail Rm Shelf; Candy machine; Disc files; Serving carts; Stoves; Washer/Dryer; Omni Scorer; Microscopes.

Terms: Cash, PA check, Visa, Mastercard, Out of state checks accompanied by bank letter. No buyers premium. Food by Derry Township PTO.
AND MUCH MORE!!!!

Auction Conducted By
ZIEGLER-VALENTINE
COMPLETE AUCTION SERVICE

Jesse D. Ziegler
Lic. #AU-002771-L
610-488-7372
610-488-9990

Christine Valentine Savage
Lic. #AA-02561-L
717-534-2484