

# Sale Reports

## SINGER SALE

A Public Auction of real estate and personal property was held Saturday for Florence Singer, 5965 Pine St., East Petersburg.

A 2 1/2 -story brick house w/one-car detached garage sold for \$96,000 to Matt and Andrea Hartzler of East Petersburg.

Personal property sold included: Lehn water bucket \$5300, Lehn egg cup \$1400, squeak-toy sitting cat \$1000, butter print \$275, 13 sheets cigar labels, ranging in price from \$175 to \$350, Jacob Mantel drawing \$1500, 1833 fraktur \$200, navy check linen towel \$700, quilted wall hanging \$1600 and child's rocking horse \$200.

Also sold were a large amount of textiles and linens, ranging from \$50 to \$125, large selection of pull-out Valentines \$25 to \$35, photo album \$270, large number of post-cards \$35 to \$75, cut-out bench \$1600, Majolica china pitchers, ranging from \$150 to \$200, rice pocketbook \$200, Fulton shot glass \$100, Hull flower planter \$109, Aurora teapot \$250, Roseville pottery

\$170 to \$275, 1841 show towel \$130, early green blown-glass bottle \$400, Sunshine biscuit jar \$200, Flow Blue plates \$200, Corinthia plates \$80, rabbit candy container \$90.

Furniture sold included: porch rocker \$140, decorated rocker \$340, six decorated chairs \$285, walnut drop leaf table \$300, 1868 blanket chest \$250 and red stained blanket chest \$700.

There were 242 registered bidders.

The auction was conducted by J.M. and Luke R. Witman of Witman Auctioneers Inc. of Manheim.

## YODER SALE

A Public Sale of real estate, antiques and personal property was held Saturday for Mary K. Yoder, 3448 Old Philadelphia Pike, Intercourse.

The real estate consisted of 2 1/2 -story brick house w/detached two-car garage, located in a commercial zone in the village of Intercourse. It sold for \$170,000 to Raymond King, Ronks.

Other items sold included: wood box \$675, scroll oak bed \$550, oak dresser \$375, li-

brary table \$240, six pressed-back chairs \$450, cane-seated rocker \$100, wicker rocker \$120, trunk \$120, milk stool \$120, marble roller \$65, checkerboard \$100, tobacco spear \$300, Winchester 22 bolt-action rifle \$320, 7-pc. water set \$195, Flow Blue bowl \$120, ABC plate \$130, eyeglasses \$100, doll cradle w/quilt and cushion \$425, child's quilt \$160, child's table and chairs \$150, IH belt

bucle \$115, hooked rugs \$130 and \$120, 200-year Intercourse Anniversary book \$160, scrapbook \$80 and quilting frame \$120, 1986 Buick Century \$1200.

There were 307 registered bidders at the sale. Auctioneers were Robert E. Martin, Leola; Jeffrey R. Martin, New Holland; and Randall L. Ranck, Lancaster.

## FELKER SALE

A Public Sale of personal property was held

October 3 by Alice Felker, at the Memorial Building on the Beaver Fair Grounds, Beaver Springs, Pa. off Rt. 235.

Some prices were: bow front & bow side

china closet \$1600, oak 5-drawer chest of drawers \$300, oak washstand \$200, hanging kerosene lamp \$510, reverse painted lamp \$220, pressed card-

board Santa \$90, bamboo bookshelf \$250, bamboo plant stands \$60 each and Sponge-ware bowl \$90.

Kenneth E. Hassinger and Neil A. Courtney were the auctioneers.

## PUBLIC SALE

### REAL ESTATE

(To Be Sold At 1:00 P.M.)

### 56.1 ACRE FARM

Wed., Nov. 11, 1998, 12:00 Noon

Located At 550 Stackstown Rd. between Marietta & Bainbridge Pa. Take Rt. 441 to Engle rd. Proceed 1 mi. on Engle to Stackstown Rd, then left.

2 1/2 story framed-log house, w/kitchen, dining room, living room, 4 bedrooms, bath, basement, well and septic. Large barn with hip roof and attached corn barn and tobacco shed. Property has an agricultural conservation easement.

Terms: 10% day of sale, settlement on or before Jan. 11, 1999. To inspect property, call 426-3736 or 653-5678.

Open House Dates: Oct. 17, 24, 31, and Nov. 7, 1-3 p.m.

### Elizabeth Grove Estate

Scott Albert, Attorney

Harold "Abe" Shaffner's Auction Service

Auctioneers:

Harold "Abe" Shaffner 829-L (717) 653-5689

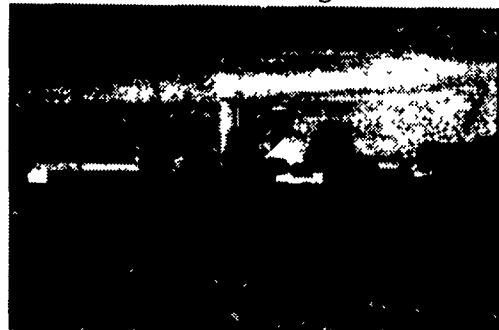
Marty Fleck, Apprentice (717) 367-9672

## Public Auction

(130 Acre Dairy Farm)

Mon., Nov. 9, 1998 at 1:00 P.M.

Located in Lebanon County. Just off off Rte 322 between Campbelltown and Fontana, Pa. At the Lebanon Valley Bible Church, take Mt. Pleasant Road to sale site first farm on right.



Situated in Lebanon Township, Lebanon County, Pa.

Real Estate consists of 130 acres M/L. Limestone soil in high state of cultivation. 6 acres pasture with pond.

Thereon erected a 2 1/2 story limestone and frame house. First floor consists of a large eat in kitchen, dining room, family room, living room & bath. Second floor consists of 4 bedrooms and bath. Oil fired hot water heat.

This is an antique limestone house with 2 staircases. Rear of the house is a summer house with fireplace and arch cellar.

Large Bank Barn with limestone gable ends. The barn is equipped with attached milk house. Also attached is a building for dry cows & heifers.

Large feed bunk area.

Large free stall & loose housing facility for 80 +/- cows.

Harvester 45 x 15 Surry tank. 20'x70' and 20'x60' Harvester silos; 20'x80' concrete starve silo; 2- 18'x18' grain bins & 1- 14x18 grain bin; wet bin.

Equipment Shed. large corn barn & equipment storage area.

Concrete block 2 car garage, & a large shop w/heat.

Terms: 10% down, balance in 45 days. Persons wishing to inspect farm may do so at Open House on Sat. Oct. 17 & Sat. Oct. 31 from 1 to 3 p.m.

For more information call (717) 272-9446 or the auctioneers at (717) 653-8762 or (717) 665-7284.

Sale by: Adella L. Brandt

Auctioneers - AU617L

Raymond Miller - 653-8762

Jim Hershey 665-7284

Attorney - Samuel Weis, Jr.



## PUBLIC AUCTION

of

Antiques, Furniture, Collectibles, Original Painting & Prints, Craft Items, Showcases

Sat., October 17, 1998 • 9:30 AM

Showcases: 1 PM

3460 Old Phila. Pike, Intercourse, PA

Dir: From Lanc. take Rt. 340 East approx, 8 miles to village of Intercourse. Sale next to C.B. Hoover.

Large 8'x6' Lighted Wood & Glass Showcase, 8' Glass Top Showcase Counter, 16 Quilt Hanging Display Rack, Amish Dec. Plank Bottom Chairs, Victorian Tables & What-Not Shelves, Spool Shelf, Easels, Plant Stands, Old Crates, Trunks, Wooden Boxes.

Original Painting & Prints: Many By Local Artists, Framed & Unframed, Pencil Drawings, Scherenschnitte, Original Photographs, Tapestries, Post Cards, Woodcarvings, Whirl-A-Gigs, Wireware, Lacework, Walking Sticks, Tin Ware, Paper Goods, Jewelry By Local Artists, Lamps & Lamp Shades, Wax Ornament & Butter Molds, Books, Garden Ornaments.

Many Antique Items Inc. Estate Jewelry, Quilts, Linens, Doilies, Dolls, Antique Homespun Fabric, Gingham & Cocalicos, Feed Bags, Braided & Hooked Rugs, Red Ware, China, Oil Lamps & Old Lighting, Hog Scrapers, Toys, Baskets, Old Books, Antique Christmas Ornaments, Picture Frames, Antique Clothing, Local Arrow Heads & Fossils, Flower Stands, Old Picture Frames, Tramp Art.

Craft Items Inc. Antique Ribbons, Silk & Dried Flowers, Silk & Feather Birds, Etc., Grapevine Frames & Hangers, Lace, Artist Materials & Paints, New Picture Frames, Craft Tools.

~ Many collectibles too numerous to mention ~ Some items subject to prior sale

No Out-of-State Checks • Not Responsible for Accidents

Not Responsible for Typographical Errors.

Sale For: Intercourse Village Gallery

MILLER & SIEGRIST AUCTIONEERS  
(717) 687-6857 AU-1723L

## PUBLIC AUCTION

SATURDAY, OCTOBER 17, 1998

Time- 9 AM

Located in Perry Co., Centre Twp, Box 269, Mansville Rd., Newport. Just south of Newport & the village of Everhartville on Rt. 34, turn onto Little Buffalo Park State Rd. & go approx. 4 miles to stop sign (Cold Storage Rd.) Turn right. Go approx. 100 yds. & turn left onto Mansville Rd. Go 1/2 mi. From New Bloomfield, take Cold Storage Rd. (3-4 mi.) to Mansville Rd. Watch for signs.

### ANTIQUES - COLLECTIBLES - EARLY FURNITURE

Victorian walnut Rococo Revival 3 pc. BR suite to incl. highback bed, dropfront marble top dresser, & marble top washstand; Johnson parlor organ, c. 1881; lg. 2-dwr, hand dovetailed Dower style blanket chest w/paint removed; blanket chests; dome & flat trunks; 2 Empire chest-of-dwrs; early driesink; 3 work tables; 2 dropleaf tables; 1 w/gatelegs; early 1 dwr nightstand; plank bottom arm rocker & various side chairs; oak furniture includes bed, 2-dressers w/mirrors; sideboard, bookcase/desk, chairs, square top stands, LR suite (table, chairs, buffet, china closet); modern furniture - kneehole desk & wingback sofa; Brunswick BR-100 console radio & recorder player; Atwater Kent 70 console radio; primitives- (12) comforters & quilts; table linens & doilies; braided rugs; Aladdin kero lamp; Sears & Roebuck wooden iron board; buttons & material; kitchen collectibles - graniteware to incl 5-blue & green swirled pcs.; roasters & canners; early utensils; tin dough riser bowl; 6-gal. crock; spice shakers; lg. qty. of salt & peppers; cookbooks; 2-still banks; castiron squirrel door stop; advert tins & wooden boxes; Ironstone pitcher; wash bowl; & soap dish; misc. glassware & china; early X-mas decorations; toys- ABC blocks; child's rocking duck; few marbles; 1917 Submarine Drag game & other games; puzzles (bldg. & lion); Music-Gretsch acoustical guitar; fiddle & Dabro mandolin (both need repair); chromatic pitch instrument; Books- Pa. @ Gettysburg Vol. 2; McKinley's Life History; Johnstown Flood told by Rev. David Beale, survivor, 1890; Chandler's Perry Co. Railroads; Hain's Perry Co. History; 8 Mahonian yearbooks, 1950, 51, 57, 60-64 & New Bloomfield HS pennant; paper collectibles- early 1900 postcards; pop-out valentines; old photos & photo albums; early Perry Co. Fair picture; water color signed Rudolph Gifford; oval bowed glass pic frame; Coins- Buffalo nickels, dimes, quarters, halves & sil. dollars.

### APPLIANCES - TRACTOR - MISC.

Simplicity 5212, 5-spd, 12 hp garden tractor, GE upright freezer & elect. stove; Barton wringer washer; sewing machine; galvanized tubs & buckets.

Auctioneer notes; This auction offers some good old country furniture & plenty of small items, many not mentioned. Parking available. Tent provided if raining.

Terms: Cash or approved Pa. Check only.

MINNIE HUMMEL,

Owner

Nevin AU 2553-L  
**FAHNESTOCK'S**  
582- 8565 Auction Service 245- 2727

D. Magee, AA-2387-L