

Public Auction Register

Closing Date Monday 5:00 P.M.

of each week's publication

Internet Sale Register will be updated every Sat. at 2:23 P.M.

AUCTION

brick rancher & contents of home

1690 Stone Mill Road, Manor Twp;

from Lancaster west on route 462, (Columbia Ave.), Left at Boas fruit market, sale 1 mi. on left.

Sat., Oct. 17, 1998 at 9 AM

Real Estate sells at Noon

Featuring all brick ranch home • 1 car attached garage • 3 bedrooms • 1 bath • modern kitchen with built in gas range & oven • dining room • living room • full basement with outside entrance • updated economical gas furnace & central air conditioned • lot size 96'x108' M/L • public water & sewer • total taxes \$1768

Terms: 10% down day of auction complete settlement on or before Dec. 4, 1998.

Open House Fri. Oct. 2nd (6-8 PM) or call (717) 397-9240.

Real Estate broker participation, call Auctioneers.

Many more useful items will be sold!

Sale For: Arline S. Muehling

John Thomas Muehling POA



Bechtold
AUCTIONEERS

Claude F. Bechtold
1928 Creek Hill Road
Lancaster, PA 17601
717-397-9240
AU2176-L

SAT OCT 3 - 9AM Dry Hollow Rd. btwn Bernville & Strausstown, Berks Co., PA Antiques, collectibles, furn, lawn & garden, billy goat, etc By Galen & Donna Stauffer Les Longenecker, Auct., 610-488-6575

SAT OCT 3 - 9AM 253 Maric Heights Dr, Maric Twp., Lanc Co., PA Furniture, clocks, clock pts, tools, furniture pks, old hardware, old tools & lumber By Hazel

S Wesley Howard E Shaub, Aucts, 717-464-3541

SAT OCT 3 - 9AM 2 mi south of East Waterford & 4 mi north of Concord along Horse Valley Rd, off Rt 75, Perr Co., PA Automobiles, tools, guns, antiques & coll By Rick & Betty Shearer, 717-734-3728 Bryan D Imes, Auct

SAT OCT 3 - 9AM 997 Reading Rd, East Earl, close to Bowmansville, Brecknock Twp., Lanc Co

PA Real estate, custom brick 3 bdrm rancher, 1 acre lot, personal prop, furniture, antiques & 1974 Chrysler New Yorker By Harvey B & Alice H Zimmerman, 717-445-5028 Kline, Kreider & Good, Aucts

SAT OCT 3 - 9AM Approx 5 mi south of Red Lion along Rt 74, at Ureys Garage turn left on Bacon Rd, 1st farm on left, York Co., PA Farm Machinery Auction - By Richard & Dean Warner, 717-244-4269 Bradley K Smith, Auct

SAT OCT 3 - 9AM Lettich's Radiator Repair & Mower Sales & Service Business, Take Rt 25 to Village of Gratz, PA, directly across from Gratz Fairgrounds \$80,000 parts inventory & access, cabinets of parts, auto parts & acc, misc lawn & garden parts & acc, Craftsman radial arm saw, office equip & Hh goods By Ruth Lettich 717-362-9626 David Deibler & Ed Shoop, Aucts

Lancaster Farming, Saturday, October 3, 1998-B31

SAT OCT 3 - 9 30AM Building Materials Auction, Fred Siegfried Auction Service

SAT OCT 3 - 9 30AM Farm equip, lumber, antiques, collectibles Approx 2 miles N of New Tnpoli, turn E off Rt 309 onto Mountain Rd go 1-1/2 miles to Hawk View Rd turn R onto Matz Rd then R onto 6111 Mantz Rd, Lehigh Co., PA For Leon Turner Ralph W Zettlemoyer Auction Co

SAT OCT 3 - 9 30AM Just north of Birdsboro along Rt 82 From Reading, Rt 422E to Rt 82S to sale on left Antiques, Hh goods, classic car, etc By Hannah Livngood Estate Horning Farm Agency, Inc., 610-286-5183

SAT OCT 3 - 9 30AM Complete Liquidation Contractor Auction Sale, J H Shipley Contracting, HavreDe Grace, Maryland Vilsmeier Auction Co

SAT OCT 3 - 9 30AM 11804 Oak Hill Rd, north of Woodsboro Frederick Co., MD Real estate farm mach, antiques & Hh goods By Donald & Dulcie Biser Trout Aucts, 301-898-9899

SAT OCT 3 - 10AM Wood's Fall Consignment Sale At The Gordon Wood Farm Rt 15 across from Fred's Woodshed Rest 2 miles from Triega, 5 miles from Lawrenceville, 10 miles from Mansfield, Pa Wood's Auction Service

SAT OCT 3 - 10AM 50 Tractors farm implements, construction equip Newark Valley, NY Goodrich Auction Serv Inc Rt 38 & 38B Newark Valley, NY

SAT OCT 3 - 10AM Trains Trains Along Rt 23, between Phoenixville, Pa and Rt 100 Ted Maurer auct

SAT OCT 3 - 10AM Alternative Livestock and Bird Sale Harker's Auction Co Inc, 391 Medford Lakes Road, Tabernacle NJ 08088

SAT OCT 3 - 10AM 80 N Dickinson School Rd, Carlisle PA Farm equipment, 1966 pick-up & more By Sam Hoover, 717-243-5049 Kevin M Wickard, Auct

SAT OCT 3 - 10AM New Holland Sales Stables, Inc., 101 W Fulton St., New Holland, Lanc Co., PA Dairy Heifer Sale 717-354-4341

SAT OCT 3 - 10AM Klecknersville Fire Co., Klecknersville PA Guns, swords, pair English Mortimer dueling pistols By Mr Donald Huber Hahn Auct Co 610-837-7140

SAT OCT 3 - 10AM Locust Rd approx 3 mi west of Gillett Wells Twp Bradford Co PA Real estate 71 acre farmette 2 sty home pasture pond, stream buildings manure tank, barn farm machinery gran & hog equip & more By Paul & Susan Schmelzer Shaylor Aucts 717-297-2513

SAT OCT 3 10AM Antiques Shotguns Primitives & tools On Rt 209 2 miles from Sciota Saylorburg Brodheadsville old Rt 209 & 115 intersection Dick & Dan Seidol aucts

SAT OCT 3 10AM 39 N Main St Shrewsbury York Co PA Real estate currently used as a retail shop By Thomas & Linda Welles Sechrist Aucts 717 741 4489

PUBLIC REAL ESTATE AUCTION

WED Oct. 14, 5:30 PM SHARP

70 + ACRES

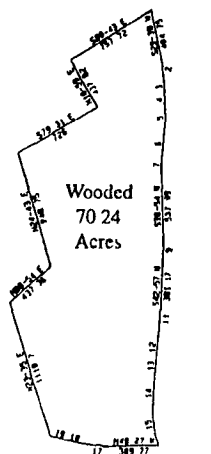
Woodland

Marketable Timber

Location: 3.6 miles North of Rt 220 on Rt 3013, on left corner of Queneshukney Rd & Jobs Run Rd, just 10 min from Williamsport

Frontage 4350 ft. ± on Queneshukney Rd and Jobs Run Rd The ground is wooded, with substantial timber value For single home or great development potential

Southern Exposure, Great View Don't Miss This One



TERMS: \$15,000 deposit at the time of the auction. Settlement and balance of cash in 30 days. 7% BUYERS PREMIUM CHARGED, to be paid by the purchaser as part of the purchase price. The property will be offered to the HIGHEST BIDDER, subject to buyers approval and sellers acceptance of the Sales Contract. Statements by Auctioneer on auction day take precedence over printed matter. See your favorite lender right away - get your loan commitment so you will be ready to buy at your price... the Seller is highly motivated to sell and expects to accept the top bid at the auction.

For Information Packet on this property call

Reil AUCTION REALTY APPRAISERS
717-398-7316

252 Allegheny Street
Jersey Shore PA 17740
AU001844L

TWO DAY COUNTRY AUCTION

Fri., Oct. 9 1998 8:00 A.M.

Sat., Oct. 10, 1998 8:00 A.M.

Located at 1061 Compass road (along Rt. 10), Honey Brook, Chester Co., Pa. (at intersection of Rt. 322 & Rt. 10, turn South on Rt. 10 approx. 1 mile to sale). Watch for sale arrows.

FRIDAY, OCTOBER 9-8:00 A.M.

HOUSEHOLD GOODS, ANTIQUES & TOOLS

Walnut Dropleaf Table, Cupboard Top, Victorian Platoon Rocker & Chair, Oak Rocker & Chairs, Old Kitchen Table, Round Top Trunk, Round Victorian Table, Butter Churn, Wooden Express Wagon, Wooden Adv. Boxes, Shelf Clocks, Olds Sleds, Early TV, Wildbriar Farm Downingtown, Birch Mar & Westwood Farms Milk Bottles, Coal Oil Lights, Depression Glass, gold China Tea Set, Stoneware Bowls, Bottles, Crocks, Jugs, Adv. Cans, Agate, Lanterns, Old Tin Toys, Old Tinware, Apple Peeler, Old books, Iron Butchering Kettle, 2 Discs, Potato Planter with Steel Wheels, Gram Drill, Potato Plow, 2 Bottom Plow, Bale Box, Oyster Shell Grinder, Grain Cradle, Large Wooden Water Storage Tub, Platform Scale, Endless Belts, 2-Man Saw, Hog Troughs, Loads Early Tools, Broad Ax, Milk Cans, Chicken Crate, 4 Steel Wheels, Large Amount Weathered Boards, Early Chestnut Beams, Lot Cut Firewood, loads Of Other Items Bring Your Lawn Chairs, Good Food Available.

SATURDAY, OCTOBER 10-8:00 A.M.

At Same Location

ANTIQUES, POST CARDS & HOUSEHOLD GOODS
EARLY HIGH TOP DRY SINK

With 10 Drawers, Low Dry Sink, Large Grained Wardrobe, Oak Bedroom Suite With High Bed, Dresser & Washstand, Walnut Vict. Bed, Marble Top Dresser, Marble Top Washstand, Oak High Chest, Oak Dresser With Mirror, Pie Safe, Oak Washstands, Cedar Chest, Vict Drop Lid Desk, Oak Dropleaf Ext. Table, Brass Bed, Milk Cupboard, Wooden Wash Machine, Dec Plank Seat Chairs, Early Radio with Outside Speaker, Farm Dinner Bell, Coca-Cola Chest Cooler, Deep & Oval Walnut Picture Frames, Prizer Range Stove, Glen Oak parlor Stove, Roseville Bowl, Leed's Platter, Tulip & Sawtooth Celery Stands, Pattern Glass, Depression Glass, Milk Bottles Inc JH White Honey Brook, Frankhouse Honey Brook, Highland Dairy, Miley Bros Ephrata, Etc., Blue Ironstone Pitcher, Pottery Crocks, Peanut Butter Tumblers, Dated Jars, Early Soda Bottles, Lot of Early Books Inc Early Local One Room School Records, 1874 Chester co Atlas, Loads of Post Cards Inc Honey Brook, Coatesville, Lancaster, Reading, Christmas, Halloween, Black, Etc., Old Valentines, Name Card Sample Book & Cards, Blue Dec. Crock, 30 Crocks & Jugs, 11 Daguerreotypes, Early License Plates In 1913, 1914, 1915; Cream Separator match Safe, iron Bank, milk Cans, Gypsy Kettle, Store Adv. Boxes, Stereoscope & Cards, Quilt Top, Lace Tablecloths, Old Fabric Balls, Early Baskets, Small Lancaster Hammer Mill, Buch 2 Hole Corn Sheller, Bring Your Lawn Chairs, Good Food Available. Don't miss this outstanding country auction. There was no sale for several generations.

Terms by: The Estate Of
CHARLES E. PLANK

DALE L. PUTT, AUCTIONEER

AU-000733-L

Phone Akron (717) 859-1430

PUBLIC AUCTION

OCT. 10, 1998 • 10:00 AM

FALL INVENTORY REDUCTION

MEADOW GARDENS OF MORGANTOWN, PA

DIRECTIONS: From Reading, take Rt 176 south to the end, sale on left From turnpike exit #22, Rt. 10 south to Rt. 23, turn right 1/2 mile on right Across from Pizza Hut

Trees (over 100) Dogwood, Weeping willow, Yoshino cherry, Crab apple, October glory maple, Flower pear and plum, Red maple, River birch, Colorado blue spruce, Fruit trees, 4'-5' Dwarf Alberta spruce

SHRUBS (over 850) Yews, Boxwood, Euonymous, Pyracantha, Burning Bush, Etc

ARBORVITAE: Emerald green, Hetz's midget, Pyramidal, Holmstrupper, Rheingold, Sherwood forest.

JUNIPERS: Youngstown, Tams, Wichita blue, Sky rocket, Blue rug, Nana

CYPRESS: Hinoki, False, Gold tread

HOLLY: Japanese, Inkberry, Blue Prince/Princess, Southern gentleman

Flowering Shrubs: Spirea, Lilac, Crepe myrtle, Butterfly bushes, Pussy willow, Sand cherry

AZALEAS: (225) 2 and 3 Gal Large bushes

RHODODENDRON: 20 Regular, 30 P.J.M

ROSES: (90) Jackson + Perkins 2 and 3 Gal

Perennials: 1000 2-gal., 500 1-gal., 2000-qt assorted varieties, including Cone flower, Black-eyed Susan, Hosta, Astilbe, daylilies, plus much more

VINES: (50) Wistena, Ivy, Clematis, Silver fleece, Honeysuckle, Trumpet

MISC.: Assorted grasses, Iris Yucca, Fruit bushes

SPECIALTY ITEMS

10 - Pee Gee Hydrangea in tree form

5 - Hibiscus in tree form

10 - Assorted Evergreen Topiaris in Poodle and Pom Pom Form

6 - 15 gal Dwarf white pine and Tanyosho pine

10 - Nandina Bamboo

80 - Trophy taker Daylilies

PREFORMED WATER GARDENS, WATER GARDEN SUPPLIES, PARK BENCHES, TRELLIS

ALL ITEMS SUBJECT TO PRIOR SALE

NO OUT OF STATE CHECK

NOT RESPONSIBLE FOR ACCIDENTS

Terms By:

MEADOW GARDENS

JERRY & JANET OBERHOLTZER

610-286-2062

Gingrich & Hoover
Auctioneering

AU-2794-L 717-933-5610

PUBLIC AUCTION

Eighty-One Acres of Farm Land

In Salisbury Township, Lancaster County, PA

NOVEMBER 7, 1998

1:00 P.M.

Auction held for the
Slaymaker Family

Eighty-one acres just west of Gap. All in cultivation land has frontage on both sides of Rt. 772 and along Rt. 30.

For information call Petersheim auctioneers 610-583-2828

Terms 10% down sale day

Final Settlement by January 1999

Announcements sale day take precedence over public adv. this includes settlement date.

Auctioneer:
Petersheim Auction Service
Steve, Steve Jr., Orpha Rose
610-593-2828
AU 001349L



Pennypacker-Andrews



AUCTIONEERS - APPRAISERS - LIQUIDATORS

ABSOLUTE INVENTORY REDUCTION

AUCTION OF DRUMM LANDSCAPING

"Everything Sells To The Highest Bidder Regardless of Price"

• Vehicles • Shade & Flowering Trees • Shrubbery

Saturday, October 10, 1998 9:00 A.M.

"Inspection Of Items Auction Day Only"

Located At: 95 Leisey Road, Denver, PA (Rt. 272 To Denver/Reamstown Traffic Light. Go Toward Denver On Church Street Through Denver Out West Main Street In Denver Go Past Memorial Park 200 Yards Turn Right Onto Leisey Road. Nursery Is On Left.)

VEHICLES & PARTS 1979 C-20 Chevrolet Pickup Truck, 1987 Dodge Artes Station Wagon (Inspected Until April 1999), 1988 MGS 3000 Lb 14'8" x 5' Trailer 14' Flat Bed For Truck With Bulkhead and Roof Cover, 6 Cylinder Chevrolet Motor (Runs), 6 Cylinder Chevrolet Head, Miscellaneous Chevrolet Truck parts, Chevrolet Truck 5 Speed Transmission, Dump Scissors For 8 Ton Dump Truck

SMALL EQUIPMENT 399/22 Solo Sprayer-Back Pack Sprayer With Mist Kit Two 2-Cycle API25 Pumps 25CC, Hard Helmets, Lawn Roller, Agway 10 HP Riding Tractor With 38" Deck, Toro 11 HP Rear Engine Riding Tractor, Simplicity 12.5 HP Riding Tractor With 38" deck, Simplicity 8 HP Riding Tractor With 36" Deck, Front Tine Hahn Tiller, Ten (10) Walk Behind Mowers, Homehite String Trimmer, Chain Saws, Snow Blowers

TREES & SHRUBBERY Balled & Burlapped Shade Trees: (All 10 to 18 Feet) 23 Red and Sugar Maple Trees, 15 Red-White and Pin Oak Trees, 20 Ash Trees, 8 Zelkova Trees, 20 Locust Trees, 10 Armstrong Maple Trees, 8 Willow Trees, 8 Yellowwood Trees, 15 Katsura Trees, 5 Beech and Several Others

Balled & Burlapped Flowering Trees: 35 Crabapple Trees, 15 Cherry Trees, 5 Pear Trees, 3 White Fringe, 75 White Pine (4 to 6 Feet), 30 Norway and White Spruce (3 to 5 Feet), Several Odds and Ends Of Pine Etc

50 Holly: Several Varieties Yellow Berry American, Fosters Golden Girl China Girl Dragon Lady Nellie Stevens, Blue Maid and Others

Miscellaneous Shrubbery: 10 Pyramidal Yew (4 to 6 Feet) 5 Dwarf Kinok Cypress-40 Burning Bush (18 to 30 Inches) 35 Arborvitae (4 to 7 Feet) 5 Buckeye (7 to 10 Feet) 5 Japanese Snowbell Tree (6 to 8 Feet) 5 Fothergilla (2-4 to 30 Inches) 5 Magnolia 20 Upright Yew 20 Densa Yew, 3 Weeping Norway Spruce (4 to 5 Feet), 10 Butterfly Bush (30 to 35 Inches) 10 Lilac 25 Viburnum (2 to 4 Feet), 100 Sweet Gum 1 Gallon (3 Feet), 15 Cottoncaneer Apiculata - 2 Gallon 20 White Birch - 3 Gallon (4 to 5 Feet) 30 Spirea Dwarf Varieties - 2 & 3 Gallon, 50 Azaleas-3 Gallon (18 To 30 Inches), 150 To 200 Juniper- 1.2 & 3 Gallon Gold Coast - Sargeant - Blue Rug-Parsons, 50 Limrope Variegata and Big Blue - 1 Gallon 30 Miscanthus Several Varieties 3 Gallon 20 Forsythia, 10 Cottoncaneer Salicifolia - 2 Gallon, 100 Cottoncaneer Coral Beauty - 1 Gallon, 50 Miscellaneous Hosta - 1 Gallon, 100 Various Lilly Tuli - 1 Gallon, 150 Kousa Dogwood - 1 Gallon, 15 West Grove Japanese Maple-Gallon, 10 Winterberry - 3Gallon (3 to 4 Feet), 15 Crepe Myrtle (5 to 7 Feet), 20 Plus Odds and Ends Specialty Plants 50 Arborvitae - 2 Gallon (24 to 30 Inches)

** MISCELLANEOUS** A Large Amount of Bulk Wood Chips (To Be Sold By The Truck Load) Approximately 80 Locust Fence Posts, Old Lot Of Lumber, Several Damaged Bales, Peat Moss, 700 Feet Of Drip Irrigation Tubing, Miscellaneous Fence-Vinyl & Wood, Etc

TERMS: Complete Payment Day Of Auction. Cash Or Approved Check With Bank Letter Of Credit.

AUCTION FOR: DRUMM LANDSCAPING, INC.

AUCTION BY: Pennypacker-Andrews Auction Centre, Inc.

Cathy M. Pennypacker-Andrews Lic. #AU-001254-L

Luke R. Witman Lic. #AU-002191-L

P.O. Box 558, Shillington, PA 19607-0558 (610) 777-6121 or 777-5890

This Information is Believed To Be Accurate. But Is Not Guaranteed. We Assume No Liability For Errors.