

(Continued from Page A2)

1-3 30.00-40.00, few fleshy 2-3 20.00-30.00.

GOATS: All goats sold by the head. Billies: Large 75.00-100.00, few to 120.00. Medium 50.00-60.00. Mutton: Choice and Prime 60.00-90.00. Nannies: Medium and Large 35.00-60.00. Yearlings: Choice and Prime 50.00-75.00. Kids: Choice and Prime 30.00-50.00. Good 20.00-30.00.

Lancaster Co. Weekly

NEW HOLLAND, PA
FRI OCTOBER 2, 1998

	CATTLE	CALVES
THIS WEEK	2748	1751
LAST WEEK	3545	1659
LAST YEAR	2443	1529

CATTLE: Compared to last week's closing prices; slaughter steers closed 2.00-2.50 lower, instances 3.00 lower on the highest quality cattle. Demand was fairly light this past week for all classes of cattle with increased pressure from lower boxed beef and futures prices. Major cattle feeding areas continue to struggle with large front-end supplies and heavy carcass weights. Western feedlots sold cattle late in the week for 57.00 live and 91.00 dressed. Holstein steer prices finished weak to 1.00 lower and this week's light run of slaughter heifers sold mostly 2.00 lower. Slaughter cow and bull prices plunged again this week in slow trading. Slaughter cows closed 1.50-2.50 lower and bulls ended 2.00-3.00 lower. This week's supply was made up of around 45 percent slaughter steers, 5 percent slaughter heifers, 36 percent slaughter cows, 4 percent bulls and the balance were feeder cattle.

SLAUGHTER STEERS: High Choice and Prime 2-4 1115-1490 lbs 57.75-63.25, late mostly 57.75-60.75. Choice 2-3 1045-1525 lbs 56.50-60.50, few high dressing 1-2 up to 63.00 and low dressing 4-5 down to 55.75. Select and low Choice 2-3 1010-1550 lbs 51.75-58.25. Select 1-3 960-1545 lbs 50.00-57.00. Standard 905-1345 lbs 40.50-48.50.

HOLSTEIN STEERS: Package High Choice and Prime 2-3 1555 lbs 54.10. Choice 2-3 1215-1570 lbs 51.00-53.25. Select and low Choice 2-3 1220-1695 lbs 48.85-51.35. Select 1-2 1135-1600 lbs 46.10-49.00, package 1758 lbs 40.00. Few Standard 1-2 1555-1655 lbs 42.75-43.60.

SLAUGHTER HEIFERS: Choice, few Prime 2-4 1025-1240 lbs 56.00-59.10, few high dressing 1-2 up to 62.00 and several

low dressing 3-5 down to 50.75. Select and low Choice 2-3 1015-1340 lbs 49.25-56.00.

SLAUGHTER COWS: PERCENT LEAN WEIGHT BULK LOW DRESSING Breakers 75-80 pct lean over-1400 lbs 33.75-38.00 30.00-35.25 Boners 80-85 pct lean over-1200 lbs 31.50-36.25 28.00-34.00 Lean (Hi-Yield) 85-88 pct lean over-1200 lbs 29.25-33.00 27.00-31.50 Lean 88-90 pct lean over-1000 lbs 27.00-31.25 25.50-29.25 Lean (Light-Wt) 85-90 pct lean 750-1000 lbs 25.00-30.00 23.50-27.25

SLAUGHTER BULLS: Yield Grade 1 1390-1880 lbs 42.00-52.00, couple Limousin X 1605-1870 lbs 53.25-56.25. Yield Grade 2 1195-2085 lbs 35.75-44.00. Bulls: Few Choice 2-3 1150-1305 lbs 56.00-56.50. Select 1-3 855-1370 lbs 44.50-52.00.

CALVES: Compared to last week's close, vealers sold mostly steady with a fewer percentage of calves going direct to slaughter than last week. Larger slaughter calves closed fully steady. Trade turned active late in the week for Holstein bull calves returning to feed and prices closed 10.00-20.00 higher. Holstein heifer demand remains very good and prices were fully steady.

VEALERS: Good and Choice 70-110 lbs 15.00-27.00. Standard and low Good 60-90 lbs 11.00-18.00.

SLAUGHTER CALVES: Good and Choice 250-350 lbs 55.00-70.00; 350-500 lbs 55.00-65.00. Standard 300-500 lbs 50.00-60.00.

RETURNED TO FARM: Holstein bulls 90-125 lbs 50.00-102.00, late mostly 65.00-100.00. Plainer-type bulls 80-115 lbs 26.00-65.00. Holstein heifers 80-115 lbs 130.00-225.00, mostly 150.00-200.00. Plainer heifers 70-100 lbs 60.00-145.00.



ANNUAL FALL CONSIGNMENT AUCTION SAT., OCT. 10, 8:30 am FARM MACHINERY, TOOLS, LAWN & GARDEN EQUIP., VEHICLES, COINS, ETC.

The Auction will be held at 1434-E. Deep Run Rd., Westminster, MD. From Manchester, take MD Rt. 30-N. approx. 3 miles, turn left onto Deep Run & go 2 miles to Auction. Or From Union Mills, at Rt. 97-N. take Old Hanover approx. 1/4 mile, turn rt. onto Deep Run & go 5 miles to Auction

FARM MACHINERY: Ford 801 power-master WF, 3-pt. cab; MF 85-gas PS, 3-pt. WF; Nuffield 460-D. WF; Ford 3000-D. (new paint); JD 1050 4x4 w/loader, ps.; IH 3288-D. w/cab, 16-spd.; Kewanee 10' roller harrow; NI 311 2-row picker; NI 323 1-row picker; 3-btm. trip plow; dump, bale & flat wagons; plows; disk harrows; cultivators; 3-pt. equip.; Fairbanks Morse FM engine; IHC type L gas engine; 1-cyl. Maytag engine; 4, 8, 12, 15 & 16' sq. tube, pipe & wooden gates; flat & other steel; oak lumber; plus much more.

LAWN & GARDEN: Cub Cadet 1450 w/44" deck & 42" blade; Wards 16-hp. Hydro w/snow blower; JD S-92; Cub Cadet 80, Hydro. w/blade; Bolens 110 w/new deck; Snapper rider; Sears 12-38; Sears ST-12; Sears Suburban 12 garden tractor; Hechinger 16-hp., Ford 145 Hydro; Ford LGT-17 hp. w/hydro; Ransomes Commercial walk behind mower; plus many other riders & push mowers; AC225-S elec. welder; Atlas wood & metal lathe; electric hack saw; Dunlop table top saw; C & wood clamps; old Superior 1-row planter; copper kettle; lots of hand & garden tools; anvil; plus more.

VEHICLES: 1964 Imperial LeBaron (very original & nice); 1989 Ford Astro van, V-6 auto.; 1967 Mustang; 1972 GMC 6500 V-8, auto, 10,000 miles on new engine & trans., 18' bed, 2-tanks, new tires; 1978 Chevy 1/2-ton p.u. 6-cyl. 3-spd.; Ford 900 - gas cab & chassis, air brakes; 1981 F-150 4x4; tandem axle trailer w/hyd. tilt; 1965 Chevy Nova.

GUNS & COINS: Rem. model 35 pump rifle; Westernfield 20-ga. bolt; Iver Johnson 12 ga. single; Moauser 6.5; German WWII bayonette; SHARP 4570 (like new); Silver - dollars, halves, quarters, buff. nickels, IH pennies, lg. cents, etc. plus many other items.

SALE ORDER: Sell small all day, guns & coins approx. 10:00 a.m., Vehicles approx. 11:00 a.m. start Farm Machinery approx. 12:00 noon, Tractors approx. 2:00 p.m.

TERMS: CASH OR GOOD CHECK ON DAY OF AUCTION Not responsible for accidents or theft on property

NEVIN E. TASTO, Auctioneer
410-374-4067

Public Auction Register

WED OCT 7 - 5PM Exceptional Lot Dried Hardware & Other Lumber, complete woodworking shop, nice lot furniture, antiques, household, glassware Held at Redding Auction Service take Rt 34, 1/2 mile N of Gettysburg, bear right at Y & continue 2 miles on Table Rock Rd to auction site G Gene Dolly Estate Redding Auction Service

THURS OCT 8 - 9:30AM Dutch Pantry Restaurant, 153 N DuPont Hwy, Rt 13, New Castle, DE Next to Wilmington Airport John J. McGrellis III, Auct

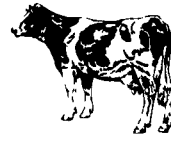
FRI OCT 9 - 8PM Registered Holstein Dispensary, Walter & Peter Kennett, Quarryville, Pa Kennett Stock Farm At the New Vintage Sales Dairy Facility, Route 30, Paradise, PA Willier, Inc

SAT OCT 10 - 8:30AM Farm Machinery, Tools, Lawn & Garden Equip., Vehicles, Cons, etc Held at 1434-E Deep Run Rd., Westminster, Md Nevin E Tasto, auct

SAT OCT 10 - 9:30 AM 1 mile East of Frederick, Md off Rt 70 E to Rt 144 E one mile (exit 56E or 59W from Rt 70) at our auction complex american auction Jacobs Auctioneers

MIDDLEBURG LIVESTOCK AUCTION, SIS, INC.
RR #3, PO BOX 185 Middleburg, PA 17842

(717) 837-2222 (717) 837-2512



Middleburg Livestock Dairy Sale

Fri., October 9, 1998 - 7PM

53 Cows Free Stall Herd From Honesdale
20 Hand Picked Fresh Cows Out Of One Herd, Milking 70-100 lbs.
Jim Hostetter Load Of Fresh Cows Milking Well, Have Shipping Fever Shots

Char-Lene Load Of Fresh Cows And Springers

Plus Spring Heifers

Open Heifers

Bulls

For Information Call:

Clarence Shirk - 717-656-8793
or 717-837-2222

Lic. #000357

Public Auction Thursday, October 8, 1998, 9:30 am

Dutch Pantry Restaurant

153 N. Dupont Hwy., Rt. 13, New Castle, DE

Next to Wilmington Airport

Restaurant Equipment, Furniture, Bar, Etc.

20 qt Hobart industrial mixer, 20' salad bar one side hot w/sneeze shield, Hussman double glass door refrigerator, 6 sided 3 level pie case w/light & refrigerator, 3 bus stations, Bunn Omatic ice tea brewer, Hobart model C-64 dishwasher station w/counter, Hetco conveyor toaster, utility carts, 6' stainless counter food prep table, 5 Litton comm microwaves, Hobart model 1612 food slicer w/sharper, stainless double wide reach in refrigerator, dish and glass racks, silverware trays, cooking sheets, Hussman 6 burner gas stove w/oven, mobile hot box, Hussman gas broiler, electric 4' grill, Garland 4' gas grill, Hobart deep fryer, Pitco deep fryer, 7' cold Bain Marie, 7' Bain Marie w/food warmer, trash cans, Hussman double door gas steamer, 5' stainless food prep table, 5' butcher block prep table, Hussman stainless single door refrigerator, Raeton freezer, Beverage Air Bain Marie w/food warmer, stainless 3 bowl sink, Beverage Air keg cooler, track lighting, Honeywell air cleaners, pots, pans, bowls, baskets, trays, can openers, chafing stands, lettuce cutter, Arco food prep machine, Hamilton Beach comm milk shake mixer, Ind crock pot food warmers, two burner Bunn coffee warmer, high chairs, booster chairs, coffee dispensers, Hamilton Beach blenders, silverware, tea pots, ice bucket w/stand, Cambro ice carrier, 3 Bunn Omatic 5 burner coffee makers, Cecilware coffee urn, towel and soap dispensers, 15' stainless counter w/3 door cooler sink, 12' stainless counter w/bun warmer two soup warmers ice holder and water, 15' stainless counter w/ice holder and water, 20' counter, guest check holder, 4 sink stainless counter, beer cooler, small stainless sink, brass glass rack over bar, wok, white china, ash tray, glasses, mugs, goblets, rustic booths, 22 checkered top tables, silverware hutch, bakers rack, 27 oak booths, 27 tables for four, 27 tables, 37 oak chairs, stacking chairs, framed prints, clock, artificial plants, fruits, and vegetables, time clocks, Marantz piano and stool, lamps, chandeliers, 17 Hunt Country bar stools, 10'x18' walk-in refrigerator, Manitowoc 1200 ice machine, Blodgett convection oven, memorabilia games, wall of old barn boards around bar Closed last Friday everything in very good condition Many other items too tedious to mention

JOHN J. MCGRELLIS III, AUCTIONEER

P.O. Box 217, Hockessin, DE 19707

(302) 239-7244, FAX (302) 239-1649

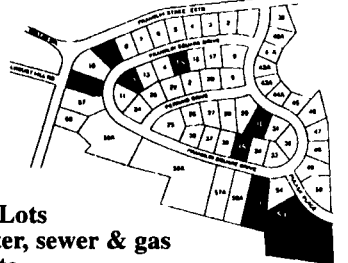
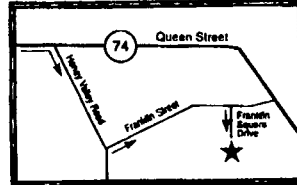
ABSOLUTE AUCTION BUILDING LOTS, EQUIPMENT & TOOLS

Sat., Oct. 24th, 9 a.m.

starting with tools

York Township, Dallastown Schools

Directions: Rt. 74 (South Queen Street), through Spry, Right on Honey Valley Road (at Coldwell Banker office), 1/2 Mile to Left on Franklin Street, 1/4 Mile to Right on Franklin Square Drive. Lots are marked - open anytime for inspection.



10 Approved Building Lots
Ready to build on with public water, sewer & gas
3 To Be Sold Absolute

Lot Terms: 10% down the day of sale, balance due in 45 days.
All Equipment and Tools Sold to the highest bidder.
Equipment Inspection: Thursday, Oct. 22 and Friday, October 23.

Equipment & Tools:

1980 Mack Dump Truck, 35,000 G.V.W.; 855 Case Truck Loader - 4700 +/- Hours, Complete Service Records Available; 1978 General Lowboy 10 Ton Trailer; Two Ton Bomag Paving Roller - New Motor & Chain; 1969 Three Ton Trailer (Used w/Roller), Makita Generator 5700 - Electric Start, On Wheels; Coleman Generator - Honda Motor; Honda WD20X Water Pump & Hoses; Troy Built "Trail Blazer" Sickle Mower (Just Serviced) New Blade, Etc., Karcher Power Washer - Electric; Three Kerosene Torpedo Heaters - 100,000 BTU; 32' Magnesium Extension Ladder; Several Aluminum Extension Ladders; Several Woodland Fiberglass Step Ladders.

Tools:

Laser Plane 200 - Laser Level and Accessories; Stihl Concrete Saw; Wacker Plate Wacker - new Motor; Makita Cut-Off Saw, Two Kero Sun Radiant Kerosene Heaters; 28' Construction Trailer - Converted From Tractor Trailer, All Metal, Separate Office Area, Tripod Stand; Blacktop Paving Tools; Rakes, Shovels, Picks, Post Hole Diggers, Tampers, etc.; Water Curb Box Wrench.

Misc:

Several Concrete Blankets, Misc. Lock Sets, Temp Electric Pole; Portable Lights; Nails, PVC Fittings; Wheelbarrows; Several Igloo Job Site Water Containers; Vinyl Siding and Accessories; Interior Door Sets and Blanks; Interior Trim Material.

Office Equipment:

GE "Pro Series" 4 Line Telephone System, Epson FX 1050 Printer w/Manuals; Smith Corona Electric Typewriter; Metal Office Desks, Electric "Disk" Heater - Still in Box
Equipment Terms: Cash or Approved Check the day of Sale.
Auction to be held on Lots 51 & 52
Auctioneer: Brad Smith Lic #860L - 717-927-6949

PUBLIC AUCTION ANTIQUES-COLLECTIBLES-HOUSEHOLD GOODS MON., OCT. 26, 1998 9:00 A.M.

601 Mundis Mill Road, York, PA

(Between North Sherman Street & Emig Road)

Softwood Jelly Cupboard, Hoosier Cabinet, Several Blanket Chests, Old Wicker Furniture, Oak Table, 1940's sofa, Cabinets, Dough Tray, 1800's Oak Bed, Pr. Matching Rockers, Rope Bed, Maple Bedroom Suite/Twin Beds, Claw Foot Table, Drop-Leaf Table, Pedestal Stand, End Stands, Press Back Rockers, Oak Hall Stand w/Mirror, Pr. Twin Poster Beds, Duncan Phyfe Tier Stand, Oak Dressers, Oak Chest Of Drawers, 2 Cedar Lined Wardrobes, Wooden Buckets, Doll Cradle, Sofa & Matching Chair, Air Conditioner, Recliners, Pr. Duncan Phyfe Drop-Leaf Stands, Sausage Stuffer, Slaw Board, Grain Cradle, Wooden Rake, Wash Boards, Wooden Measures, Gypsy Pot, Candle Mold, Oak Basket And Many Other Baskets, Iron Wheel Wagon, Wooden Wheelbarrow, Humpty Dumpty Egg Carton, Ammo Box, Wrought Iron Breakfast Set w/6 Chairs, Rayo Lamp, Other Quality Lighting, Cowden Crock, Blue Slip Jugs, Cream Separator, Cherry Boy, Carnival Glass, Westmorland Milk & Hobnail Glass, Italian Pcs., Germany Pcs., Shirley Temple Cup, Wall Pockets, Moustache Cup, Nippon, Haeger, Copper Coffee Pot, RS Prussia Sugar, Selesia Type Water Pitcher, Hand Painted Japan, Transfer Pcs., Depression Glass, Hall Serving Pcs., Fiesta Ware, Beer Steins, Teamster Dual Spout, McCoy, Noritake Azalea Pattern, Figurines, Griswald Square Egg Skillet, Wagner #9, Canners, Roasters, Grain Scale, 1800's Almanacs, Old Childrens Books, Cookbooks, Christmas Items, Household Items, Many More Items Of Interest

20 Gauge Shotgun - Air Rifle

Terms: Cash Or Good Check

Seller: HOWARD SHENBERGER

AUCTION CONDUCTED BY:
RENTZEL'S AUCTION SERVICE
EMIGSVILLE, PA
717-764-6412 PA Lic. #761