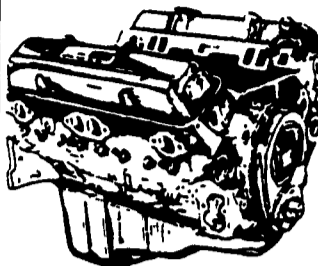


JONES



We want your business.



GM GOODWRENCH
350 V8 1973-85
Part Number
10067353
New Engine - Not Rebuilt
36 Month or 50,000 Mile
Warranty

New Engine - No Core Fee **\$1199.00**

WE'LL MATCH ANY COMPETITOR'S PRICE!

6.5L GOODWRENCH DIESELS
From **\$3,175**

Call 394-0711 for prices on other New or Remanufactured Goodwrench Engines. 2.5 Liter thru 454 cid. Gas and Diesel

Chevrolet - Pontiac - Olds - Buick - Cadillac - GMC

JONES GM PARTS CENTER

1335 Manheim Pike, Lancaster, PA 17604
Easily Located on Rt. 72 Just off of Rts. 283 & 30
Hours: Mon-Fri 7:30 a.m. - 9 p.m. Sat 7:30-3
(717) 394-0711



LEED TRUCK CENTER

402 South Chiques Rd. Salunga Exit, Route 283 **717-898-1200**



89 FORD F800
7.8 Liter, 210 HP, 6 Spd., P/S, AC, Hyd Brakes, 33,000 GVW, 18" C&C, Clean
\$8,500
Reduced to **\$8,900**

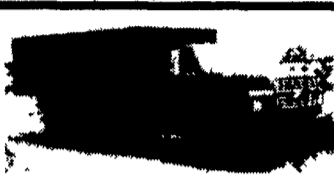
90 FORD F350
V8, A/T, P/S, Dual Wheel, 11,000 GVW, 12' Heavy Alum Dump Body & Winch
Priced To Sell



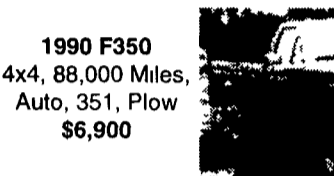
77 IHC 1850
Cargo Star, DT466, 5 & 2 Spd., A/B, P/S, 30,000 GVW, 16", C&C, 100,000 Miles, New Paint & Insp
\$4,900



91 PETERBILT 224
210 HP, Turbo Cummins, 6 Spd., P/S, A/B, AC, 29,700 GVW, 18" Morgan Reeler, Flat Floor, CSD, & MD-II & Elect Stoby
Call For Details



1987 F800
50,000 Miles, 26,000 GVW, 5+2, Air Brakes, 16' Dump
\$19,700



1990 F350
4x4, 88,000 Miles, Auto, 351, Plow
\$6,900



1983 D250
4x4, 130,000 Miles, New Plow Never Used
\$5,800

Londonderry Nurseries
610-857-1816

FOR SALE: Series 400 1970 Dodge Cargo Truck, 12ft. box overhead door. Good tires, dual wheels, 48,583 orig. miles. \$1,800. Sch. Co. (717)739-2864. No Sunday Calls, please.

1964 FORD 350
Flatbed Dually, Inspected, Runs Great, New Tires
(717)529-2330

74 Ford 50,000 GVW, 13 Spd., 534 Gas, New Tires, Floater Tires Front and Rear, Garage Kept Since New, 24,000 Mi., \$6,200 Or Best Offer
717-382-4811 or 717-382-4881

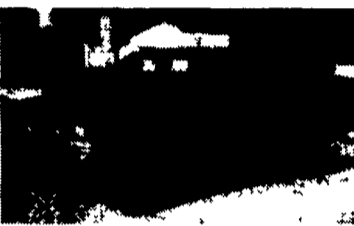
USED TRUCKS



97 Ford F-350, XL
4x4 7.3 Powerstroke Diesel 5 Speed AC AM FM Sliding Rear Window Dual Tanks 9000 GVW 1.55 Rear Dk Green, 32,000 Miles
\$24,700



97 Dodge 2500 SLT
4x4 5.9 Cummins Diesel AT A/C Loaded 8800 GVW 3.5 Ld Slip Rear PA 1 Owner 12,000 Mi Dark Green
\$26,500



94 Chevy 2500 Cheyenne 4x4,
350 Fuel Injected 5 Sp A/C AM/FM Sliding Rear Window 8600 GVW 1.73 Ld Slip Rear Maroon 43,000 Mi
\$15,900



93 Chevy K3500 Cheyenne Crew Cab
Durally 454FI Engine 5 Sp AM/FM A/C 10,000 GVW 4.10 rear Red & Silver 61,000 Mi
\$17,500

MARTIN'S AUTO SALES
1025 W. Main St. New Holland, PA 17557
(717) 656-6621



96 FORD F350 CREW CAB 4X4 XLT
Power Stroke Diesel, AT, A/C, 4.10 Rear, Most Options 55,000 Miles Black/Silver #F764



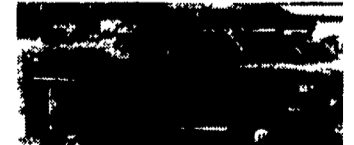
97 FORD F350 4X4, Power Stroke Diesel, XL Trim, 5-Speed, AM/FM, A/C, 9,000 GVW Bedliner, Dual Tanks, 17,500 Miles, Fact. Warranty, Red, #F747



99 FORD F350 CREW CAB DUALY
4x4 Power Stroke Diesel AT A/C XLT Lanat, Most Options Alloy Wheels, CD Player, 4.10 LS Rear 700 Miles, Black #F760



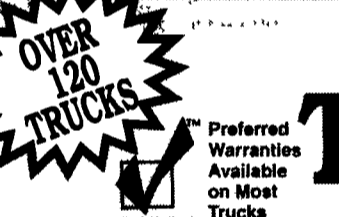
97 DODGE 350 CLUB CAB, DUALY 4X4
Cummins Turbo Diesel AT, A/C PS PB PW, PL, C T LE pkg, 5,000 mi Driftwood/blk #D226



97 FORD F350 4x4 DUMP TRUCK
Power Stroke Diesel, 5-Spd., PS, PB, 52,000 Miles, Red



94 CHEV. 3500 10FT. FLATBED
6.5 Turbo Diesel, 5-speed, A/C, 85,000 Miles, Tool Box, #C473



95 CHEV K3500 CREW CAB DUALY
4x4, 6.5 Turbo Diesel, AT, A/C, PW, PL & Lots More, Silverado Pkg, 70,000 Miles, Black



97 CHEV K3500 CREW CAB DUALY
4x4, 454 Vortec Engine, Silverado, AT, A/C, Full Power, CD Player, Hitch, Black, 27,000 Miles #C481



96 DODGE RAM 3500 CLUB CAB DUALY 4X4
Cummins Turbo Diesel, AT, Laramie SLT, A/C, Most Options, 4.10 LS, 60,000 Miles, Black, #D240



95 GMC K3500 EXT. CAB UTILITY BODY 4X4
6.5 Turbo Diesel 5-Spd A/C, C, T, 55,000 Miles



95 DODGE 3500 DUALY UTILITY BODY
Cummins Turbo Diesel, AT, AM/FM, Western Plow, 72,000 Miles, Red #D244



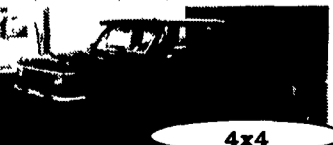
97 FORD F350 CREW CAB DUALY
Power Stroke Diesel, XLT, AT, A/C, PW, PL, C.T., Alloy Wheels, CD Player, 23,000 Miles, Elect. Red/White #F759



89 CHEVY 3500 EXT. CAB DUALY
350 EFI, AT, A/C, AM/FM, 51,000 Miles, Red



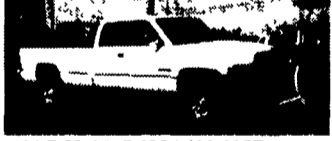
95 FORD F350 CREW CAB 4X4
Power Stroke Diesel, Roll-A-Long Conversion, AT, A/C, PW, PL, & more, 37,000 Miles, Blue, Fact. Warr #F765



89 FORD F350 CREW CAB 4x4
AT, A/C 460 V8 GT, High Miles, Looks & Runs Good Black #F750



94 FORD F350 CREW CAB 4x4
XLT, 460 V8, AT, A/C, PW, PL, 50,000 Miles, Dk. Green #F743



96 DODGE RAM 2500 CLUB CAB
4x4, Cummins Turbo Diesel, P/A Plow, Laramie SLT, AT, A/C, Most Options, 43,000 Miles, 4.10 Limited Slip Rear



96 FORD F250 SUPER CAB 4x4
Power Stroke Turbo Diesel, Short Bed, XL Trim, 5-Speed, AC, C.T. Dual Tanks, Only 23,000 Miles, Black #F651



93 CHEV 3500 CREW CAB DUALY
Silverado, 454 V8, AT, A/C, T, C, PW, PL, Red, 70,000 Miles, #C485



90 FORD F450 SUPER DUTY
12 Ft. Stake Body w/Lift Gate 7.3 Diesel AT, AM/FM 132,000 Miles White Looks & Runs Good



96 FORD F250 CREW CAB 4X4, Short Bed 7.3 Power Stroke Diesel XLT AT A/C Most Options 49,000 Miles Alloy Wheels Dk Red & White



94 DODGE RAM 2500 4X4
Cummins Turbo Diesel, 5 Spd., A/C, Cass., 104,000 Miles, Blue, #D245



89 FORD F350 SUPER CAB DUALY
7.3 Diesel, AT w/Gear Vender, XLT, A/C, Most Options, 5th Wheel Hitch, Extra Fuel Tank, 90,000 Miles, Tan



94 CHEV. 3500 DUALY 4X4
6.5 Turbo Diesel, AT A/C PS PB, 32,000 miles Blue #C392



94 GMC 3500 EXT. CAB DUALY
4x4, 6.5 Turbo Diesel AT A/C PW, PL Sierra Pkg 85,000 Miles Red #G195



96 DODGE RAM 2500 CLUB CAB
4x4 Cummins Turbo Diesel Laramie SLT AT A/C All Power Infrntv Stereo Tow Pkg 33,000 Miles, Pewter #D243

OVER 120 TRUCKS
Preferred Warranties Available on Most Trucks
Check Us Out!

Bobby Gerhart's Truck World

2400 E. Cumberland St. Rt. 422 Lebanon, PA 17042
717-273-7995

Mon. - Fri. 9-8, Sat. 9-3