

Grantsville Livestock

Grantsville, Maryland
Report Supplied by Auction
Sat., Sept. 26, 1998
STOCK BULLS AND STEERS 200-500 LBS. 50.00-72.00.
STOCK HEIFERS 50.00-63.00.
SLAUGHTER STEERS GOOD TO CHOICE UP TO 57.00; MEDIUM TO GOOD 45.00-53.00.
HOLSTEIN STEERS GOOD 41.50-47.50; LIGHT 40.00-47.00.
SLAUGHTER HEIFERS GOOD TO CHOICE UP TO 57.00; MEDIUM TO GOOD 42.00-51.00.
BULLS: HEAVY 38.00-43.00, LIGHT 40.00-45.00.
COWS: UTILITY HOLSTEINS 32.50-39.25, CANNERS 28.00-32.00, CULLS 27.00 AND DOWN.
VEALS GOOD TO CHOICE UP TO 85.00, MEDIUM TO GOOD 35.00-55.00.
BOB CALVES: 25.00 AND DOWN.
HOLSTEIN BULL CALVES RETURN TO FARM: 90-120 LBS. UP TO 55.00.
HOLSTEIN HEIFER CALVES RETURN TO FARM, NONE AVAILABLE.
BEEF X CALVES RETURN TO FARM, UP TO 55.00.
HOGS: TOP QUALITY 20.00-36.00, HEAVY 28.00-34.00, LIGHT 28.00-32.50, FEEDER PIGS BY THE HEAD, UP TO 19.00.
SOWS: UP TO 25.00.
MALE HOGS: UP TO 15.00.
LAMBS: 70-85 LBS. UP TO 78.00; 85-125 LBS. UP TO 68.00; 30-60 NONE AVAILABLE; CULLS 60.00 AND DOWN.
SHEEP: UP TO 40.00.
GOATS: ALL BY THE HEAD, LARGE 40.00-85.00; MEDIUM 20.00-50.00; SMALL 10.00-35.00.

Friend's Stockyard Inc.

Accident, Md. 21520
Report Supplied by Auction
Sept. 28, 1998
STOCK BULLS AND STEERS (200-500 LBS.) 52.00-77.00.
STOCK HEIFERS: 36.00-63.00.
SLAUGHTER STEERS: GOOD TO

CHOICE 55.00-60.00; MEDIUM TO GOOD 47.00-54.50, HEAVY CHOICE OVER 1450 LB. 50.00-55.00.
HOLSTEIN STEERS: HEAVY CHOICE 39.00-50.00, LIGHT 35.00-44.00.
SLAUGHTER HEIFERS: GOOD TO CHOICE 54.00-59.00; MEDIUM TO GOOD 45.00-52.50.
BULLS: HEAVY 37.50-46.50, LIGHT 35.00-44.00.
COWS: UTILITY (HOLSTEIN) 33.00-37.00, COMMERCIAL TO GOOD 30.00-34.25, CULL COWS 29.00 AND DOWN.
VEALS: GOOD TO CHOICE 50.00-68.00, MEDIUM TO GOOD 20.00-47.00.
BOB CALVES: 26.00 AND DOWN.
HOLSTEIN BULL CALVES — RETURN TO FARM (90 TO 120 LB.)-UP TO 72.00.
HOLSTEIN HEIFER CALVES — RETURN TO FARM (90 TO 120 LB.)-UP TO 160.00.
BEEF CROSS CALVES — RETURN TO FARM UP TO 55.00.
HOGS: TOP QUALITY UP TO 34.50, HEAVY UP TO 29.00, LIGHT UP TO 27.50.
SOWS: 20.00-28.00.
MALE HOGS: 12.00-24.25.
LAMBS, LIGHT 60.00-68.00, FEEDER 55.00-65.00.
SHEEP: 20.00-32.00.
LIVESTOCK PRICES ARE ALL GIVEN PER HUNDRED WEIGHT!
ANNUAL FALL FEEDER CATTLE SALES OCT. 10 AND 24, AT 7:00.

New Holland Horses

New Holland Sales Stables
New Holland, PA
Monday, Sept. 28, 1998
Report Supplied by Auction
224 HEAD. MARKET STEADY.
WORK HORSES 885.00-1300.00.
DRIVING HORSES 435.00-1550.00.
RIDING HORSES 410.00-925.00, BETTER 1010-1250.
REGISTERED RIDING 810.00-2300.00.
KILLERS, HEAVYWEIGHTS, 585.00-775.00; LIGHTWEIGHTS, 310.00-475.00.
PONIES 150.00-410.00.
LARGE PONIES 500.00-550.00.
COLTS 165.00-245.00.

New Holland Dairy

New Holland Sales Stables
Wednesday, September 30, 1998
Report supplied by auction
76 DAIRY COWS, 68 HEIFERS, 10 BULLS. MARKET STEADY.
LOCAL FRESH COWS 410.00-1225.00.
FRESH HEIFERS 625.00-1260.00.
LOCAL SPRINGERS 585.00-1275.00.
UPSTATE LOADS FRESH 1025.00-1375.00.
BETTER FRESH COWS 1460.00-1500.00.
SPRINGING HEIFERS LARGE 1035.00-1135.00, SMALL 525.00-895.00.
SHORTBRED HEIFERS 650.00-810.00. REGISTERED HEIFERS 975.00-1585.00.
OPEN BREEDING AGE HEIFERS 525.00-585.00.
SMALL OPEN HEIFERS 285.00-410.00.
BULLS 350.00-585.00, PUREBREDS 550.00-700.00.

North Jersey Livestock

Hackettstown, NJ
Report Supplied by Auction
Tuesday, September 29, 1998
CALVES .02-2.05.
COWS .17-.38.
EASY COWS .12% -33% .
FEEDERS 300-600 LBS. .25-.69.
HEIFERS .26-.51.
BULLS .25-.58.
STEERS .33% -.56.
HOGS .20-.33.
ROASTING PIGS: EACH 19.00-26.00.
BOARS .07% .
SOWS .07% -.20.
SHEEP .01-.62.
LAMBS EACH 4.00-71.00.
LAMBS PER LB. .30-1.02.
GOATS EACH 30.00-127.50.
KIDS EACH 2.00-85.00.
TOTAL 947.

Mercer Livestock Auction

Mercer, Pa.
September 29, 1998
Report Supplied By PDA
CATTLE 322 [PDA] Compared with last week's sale sl steers lower, sl cows 75 to 200 lower
SLAUGHTER STEERS few High Choice and Prime 2-4 1315-1350 lbs 58 00-60 00, Choice 2-3 1125-1375 bs 55 00-58 25, Select 1-3 51 25-55 75, one at 59 00. Standard 1-2 10 00-50 00 HOLSTEIN STEERS High Choice and Prime 2-3 1125-1500 lbs 52 75-55 00, Choice 2-3 1150-1425 bs 50 00-53 00, few Select 1-2 45 00-41 00, few Standard 1-2 41 50-46 75
HEIFERS few Choice 2-4 1050-1250 bs 53 50-56 00, few Select 1-3 50 00-41 75, few Standard 1-2 42 00-50 00
COWS Breakers 75-80% lean 29 75-42 25 Premium 35 00-37 75, 70-75% 1 50-28 00, Boners 80-85% lean 7 25-32 75, Lean 85-90% lean 22 00-7 75 Shells down to 17 00
BULLOCKS Select 1-3 1150-1310 lbs 45 00-47 50
BULLS Yield Grade 1 1175-1550 lbs 50 50-45 00, one 53 50, Yield Grade 2 920-1530 lbs 33 75-40 00
FEEDER CATTLE STEERS Medium and Large 1 250-550 lbs 54 00-67 50, Medium 2 290-600 lbs 45 00-54 50, HEIFERS Large 1 500-650 lbs 53 50-59 00, Medium 1 350-550 lbs 53 50-62 00, Medium 2 275-675 lbs 42 50-52 00, BULLS Medium 1 275-675 lbs 50 00-61 00, some to 68 00, few Large 2 360-1000 lbs 40 00-44 50, Medium 2 300-725 lbs 43 00-51 50
CALVES 76 VEALERS Standard and Good 80-115 lbs 26 00-30 00, Utility 55-75 lbs 5 00-24 00
FARM CALVES few No 1 Holstein bulls 120-130 lbs 60 00-70 00, 90-115 lbs 70 00-95 00 mostly 80 00-85 00, No 2 85-130 lbs 30 00-70 00, one No 1 Holstein heifer 105 lbs 200 00, few No 2 80-130 lbs 60 00-100 00 Few beef type bulls and heifers 85-110 lbs 62 50-70 00
HOGS 33 BARROWS AND GILTS small lot 45-50% lean 205 lbs at 26 00
SOWS one US 1-3 380 lbs 25 00
BOARS couple 215 & 465 lbs 10 00 & 18 00
FEEDER PIGS 17 US 1-3 20-40 lbs 5 00-8 00, small lot 45 lbs 16 00 --- per head

SHEEP 0 NO MARKET TEST!
GOATS 4. Few Small 16.00-29 00 - per head

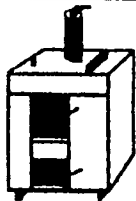
New Wilmington Livestock Auction

New Wilmington, Pa.
September 28, 1998
Report Supplied By PDA
CATTLE 126. [PDA] Compared with last week's sale sl cows 200 to 400 lower
COWS Breakers 75-80% lean 28 00-34 50, few 70-75% 26 00-28 00, Boners 80-85% lean 25 00-31 00, Lean 85-90% lean 20 00-25 25 Shells down to 17 50
BULLS few Yield Grade 2 1385-1520 lbs 34 00-37 25
FEEDER CATTLE STEERS few Medium 1 265-400 lbs 57 50-71.00, few Large 2 270-625 lbs 47 00-48 50, HEIFERS Medium and Large 1 350-500 lbs 40 00-56 00, Medium and Large 2 300-605 lbs 37 00-51 00, BULLS few Large 1 560-710 lbs 52 50-57 00, Medium 1-2 365-760 lbs 35 00-48 00
CALVES 157 VEALERS Standard and Good 75-110 lbs 25 00-32 00, Utility 50-75 lbs 5 00-23 00 FARM CALVES No 1 Holstein bulls 100-135 lbs 81 00-85 00, 90-95 lbs 65 00-70 00, 80-85 lbs 25 00-30 00, No 2 100-115 lbs 73 00-76 00, 90-95 lbs 35 00-58 00, couple No 1 Holstein heifers 105 lbs 195 00, few No 2 75-130 lbs 125 00-140 00 Beef type bulls and heifers 85-120 lbs 40 00-90 00
HOGS 145 BARROWS and gilts 1 25 to 3 00 higher BARROWS AND GILTS 49-54% lean 225-270 lbs 28 50-33 00 extremes to 36 50, 45-50% lean 220 280 lbs 27 00-28 50, 40-45% lean 240 280 lbs 26 35-27 00 SOWS US 1-3 300-620 lbs 21 50-27 00 BOARS few 255-950 lbs 9 00-12 25
FEEDER PIGS 24 US 1-3 15-20 lbs 10 00, 25-45 lbs 14 00-15 00 --- per head
SHEEP 101 SLAUGHTER LAMBS Choice 100-150 lbs 47 50-57 50, 75-100 lbs 57 50-73 00, 45-75 lbs 80 00-82 50 SLAUGHTER SHEEP 18 00-30 00
GOATS 20 One Large Billy 65 00, Medium Nannies 20 00-36 00, Small 12 50-20 00, few Large Kids 6 00-10 00 --- per head

Mahoning Outdoor Furnaces

Cut Your Heating Costs With Our Outdoor Furnace

- Standard Model Burns Wood, Coal or Wood by-products
- Multi-Fuel Model Burns Wood, Coal, Oil or Gas



Adapts to any existing heat system Installation & Accessories Available

DOUGLAS FISHEL
Gettysburg-New Oxford
(717)624-3639 (717)624-4188

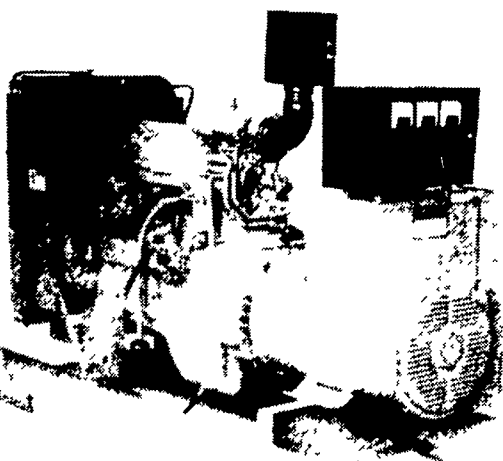
HAY, STRAW & GRAIN SALE

Every Thursday at 12 NOON

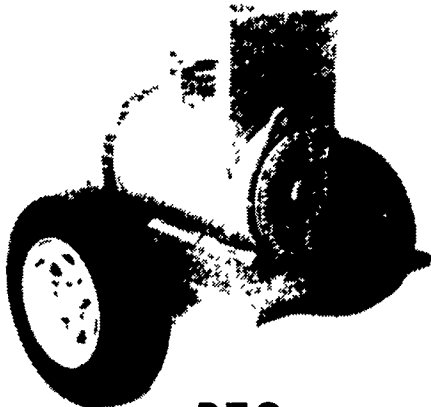
Vintage Sales Stables, Inc.
(Rt. 30, 10 miles east of Lancaster in Paradise, PA)

For info.
(717) 442-4181 bus.
(610) 458-8518 home

Agricultural Generators



Automatic
L.P. Gas, Diesel, Natural
Gas Generators
5 to 2,000 KW



P.T.O.
Generators
25 to 100 KW

Service - Rental - New - Used

PENN POWER SYSTEMS

Power Generation Systems Specialists

Call Leonard Martin **717-273-4544**
Fax 717-273-5186



A LEGACY OF PRIDE

From a proud neighborhood dairy in the 1910's to a modern manufacturing company of the 1990's, the Dietrich family-owned business continues to move forward. With the dedication of three generations and a heritage rich in experience and innovation, Dietrich's Milk Products faces the future with confidence.

As in the past, our future success depends upon fine quality products made from quality milk.

We need more good dairy farm families from your area to assure a continued bright future together.

OUR BENEFITS

- Strong Market Premiums
- Extra Pay For High Solids Milk
- A Field Staff That Knows The "Cow Business" And Is Here To Help You!
- High Quality Milk Premiums
- Sensible Hauling Rates
- A Local, Family-owned Dairy - Large enough to Serve your Milk Marketing Needs - Small enough to Know You!

SERVING LANCASTER, CHESTER, BERKS COUNTIES AND THE SURROUNDING AREA

dmp DIETRICH'S MILK PRODUCTS, INC.
100 McKinley Avenue
Reading, PA 19605-2117
READING OFFICE:
800-526-6455
DANIEL VOSBURG:
717-354-5562
JEFF JOHNS:
610-323-4630

