

1988 Aluminum Body Delivery Van, Roll-Up Rear Door, Dual rear Wheels, 10,000 GVW, 350 Chevy Engine, Auto-Trans, Engine Has Blown Head Gasket, \$1,000 717/834-3148

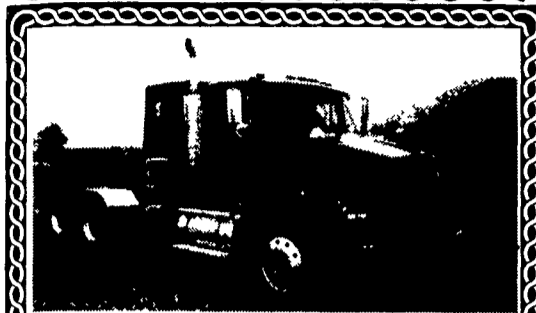
'97 F250, 4x4, power stroke diesel, w/winter cooler, ext. cab, 5 speed, XLT, all options, dark green, 66,000 miles, excellent condition, (717)539-8721.

WINROSS TRUCKS! Special limited editions, Penna. Quality Eggs Ford Conventional/Tanker or Big Dutchman, cabover/dry van. \$43/ea. postpaid. Mastercard or Visa. 717-393-5807

'95 Ford E150 Club Wagon, 8 passenger, 300 EFI, auto, PS, PB, AM-FM, 62,000 miles, dark blue, excellent condition, \$8,975. 717-733-2873

'94 Dodge 1500, HD, 1/2 ton, 3.9 V6 Magnum, 5 spd, PS, PB, AM-FM, 6,400 GVW, new radials, excellent condition, \$8,900. 717-733-2873

Wooden truck bed, shed kept, 8'x17', w/2' racks & headboard, \$250. 410/357-4073 after 7pm or leave message.



89 Kenworth T-800, Cat 3406 350hp, 9-spd, Airride, wet line, aluminum Budds, \$16,500

'79 Ford L8000 Tri-Axle Aluminum Dump, 3406 Cat, Good Rubber \$11,500

Weaver's Truck & Equipment Sales 717/523-9598

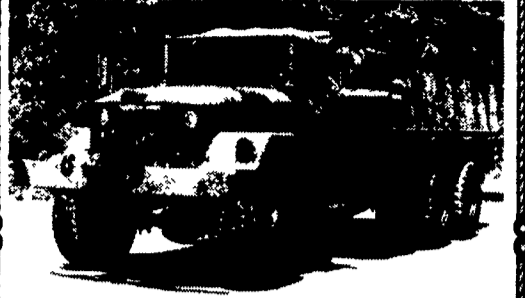
KLOPPY'S TRUCK PAINTING

Trucks, Autos, Machinery, Race Cars, Etc. 717 274-1666 Rt. 72 Lebanon/Manheim, Pa.



Collision Repair Sandblasting Painting

6x6 INTERNATIONAL BRIDGE TRUCKS



All wheel drive 6 cyl. engine 5 speed transmission 2 speed transfer case double frame, 1400/20 flotation tires, hard top cab, heater, front winch. P.S. air brakes. 20 ft bed. Fully reconditioned. \$14,850 PA 814-834-1018

ULTIMATE spray-on linings

PROTECT YOUR INVESTMENT

- Spray-on up to 1/4" thick
- Durable! Anti-chip truck bed liner
- Chemical Resistant
- Lifetime Warranty
- Multiple Colors
- Rust/Corrosion resistant

Rohrer Bus Service
1515 State Road, P.O. Box 100
Duncannon, PA 17020
1-800-735-2400 Fax: (717) 957-4884
Visit Us At: www.rohrerbus.com



All Wheel Drive, M35A2 Cargo Trucks, turbo diesel engines, excellent running condition, low miles, some with winches, excellent tires, great for logging, farming, collectors, convert to log loader, tanker or dump, priced to sell, \$3,500 and up.

Philadelphia, PA • (215) 598-8227

Dodge 1991 W150 4X4 Truck, V-8, Auto, new tires, 64,000mi, \$8,000 neg. (717)938-4743

Snow Plows (3), 8' Fisher w/minute mount. 410/531-0197.

Super HD '98 8x24 Goose-Neck, 14,000 GVWR, Pop-Up Dove-Tail. Main Frame 12" I-Beam. Rub Rail w/ Stake Pockets (2)7K, 8-LUG, Electric Brakes, EZ-Lube Axels, (4)750-16 8PLY Tires. 2" PT Deck, 5'3" Channel Fold-Over Spring-Assist Ramps. \$3,995. MANY OTHER MODELS AVAILABLE (609)965-4527.

PRESSURE WASHER
very low (22) hours self contained hot water 4000 PSI 4gpm \$5,000

1985 Dodge Caravan
2.6L mitsu 130k a/c/pw/pl/cruise/tilt/good transportation \$900

1986 Dodge 12 pass Van
Loaded lots of new parts /pw/pl/at/cass/dual a/c great Amish hauler \$3,200

1986 Dodge Convertible
Dodge 600 Turbo a/c cass new rubber 4 year old top (white) best offer \$1,800

1987 Dodge Van
work Truck, Trans Problems, Manual, First \$500 takes it!

610-384-9255 Leave Message

EBY USED EQUIPMENT

BODY
16' Aluminum Eby Flatbed Body

LIVESTOCK BODIES

- 10'X92X6" Eby
- (1) 9'x92"x6" Eby
- (1) 9'x82"x6" Eby
- (1) 9'x94"x6'9" Eby
- (1) 12'x92"x6'6" Eby with double deck - like new
- (1) 18'x96"x6'3" Eby
- 19'x96" Eby w/Deck Rail

GOOSENECK

- 1998 20'x7'x6'9" 4-Star
- 1996 20'x8'x7'6" Eby
- 1981 22'x8'x6'6" Eby
- (1) 1997 24'x8'x6'9" Eby Ruffnecks

M.H. EBY, INC.
1194 Main St. (Route 23)
Blue Ball, PA 17506
(717) 354-4971
(800) 292-4752
4435 State Route 29
West Jefferson, OH 43162
(614) 879-6901
(800) 752-0507

Huntingdon Equipment Rentals Available **GOOD USED EQUIPMENT**

Huntingdon Valley, PA • 215-672-9667 • 1-800-543-3833 • Eddie

FINAL DAYS - EVERYTHING MUST GO!

- 1980 International Tandem Axle wet line, 290 Cummins, 7 speed, inspected & ready to work, \$5,000.00
- We have Line Trucks - 10 of Them
- Gas or diesel
- Can dig a hole from 8" to 36" diameter
- 11000 lbs. to 16,000 lbs. boom capacity
- Boom height 32 feet to 42 feet
- Prices start at \$3,500.00 MUST GO



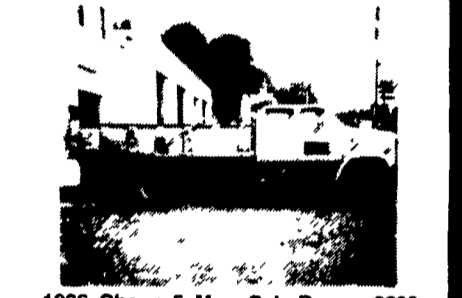
Material Handler Bucket Truck - 42 Bucket with Jib 1981 and 1982 Diesel Engine - Auto or Stick - Special \$9,995



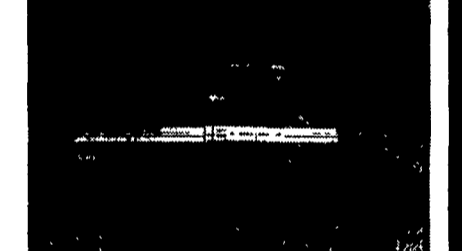
Rope For Sale by the Reel or Cut to Length - 3/4" to 2" diameter.



Aluminum & Steel Poles for Lights or Flag Poles. We have used lights Call for Information.



1986 Chevy 5 Man Cab Dump, 3208 Cat - 5/2, Air Brakes Dump with Lift Gate Dump 14' Long, GVW 34,000 pounds



Barber Greene SA-41 Paver/Finisher Diesel - Ready to Work

Tank Trailers:
Heil - Aluminum 7,500 Gallon - 1980
Fruehauf - Aluminum 8,250 Gallon, 1957

DIGGER DERRICKS/AERIAL BUCKETS/UTILITY EQUIPMENT

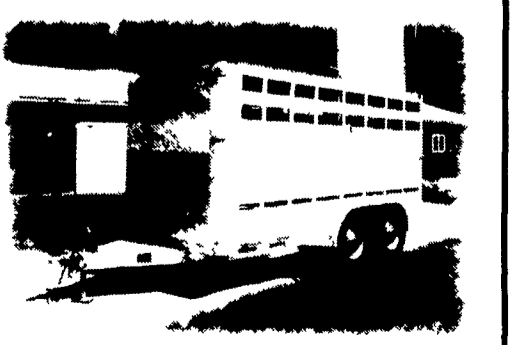
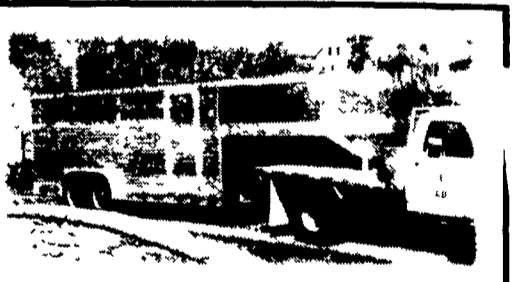
When agriculture is your life, the equipment choice is Eby.

EBY is the leading manufacturer of aluminum bodies and trailers for agri-transportation. Our products are designed for superior strength, reduced weight for greater payload capacity, minimum maintenance and higher resale value. In addition to premium standard features, we offer full custom options built to your specs.

- EBY's complete line includes models for every requirement:
- Gooseneck Trailers- lengths 14' - 32'; widths 7', 7'6", 8' and 8'6"
 - Bumper Hitch Trailers- lengths 12' - 18'
 - Grain Bodies- lengths to 24', plus landscape and general purpose dumps to 12'
 - Flatbed Bodies- lengths to 32' in 5 widths
 - Landscape Bodies- lengths to 12'

For quality equipment and customer service that works as hard as you do, nobody offers more than EBY.

EBY Blue Ball, PA (800) 292-4752



Call for FREE color literature.