

34 AUTOS



1961 T-Bird
Garage Kept, Excellent Condition



1929 Nash
32,000 Original Miles, Wood Spoke Wheels, 2 Door Coupe, All Original

610/775-9744

35 TRUCKS & TRAILERS

1939 International Pickup, runs, \$1500 OBO. Northampton Co. 610/252-7292.

1970 International 2110 single axl dump truck, 33,000 GVW, 549 eng., 5+2 trans. Cinder spreader. Dump Body. Runs good! \$3,200. (717)927-6967

1972 Waid LaFrance fire truck and equipment. 717-279-0756

1973 C-65 Chevy truck w/14' hydraulic grain body, canopy over cab, recent inspection, 366 plus 5x2, 30,000 GVW, air brakes, good rubber, 12,300 miles since complete overhaul, \$3000 firm. 717-889-3032 6pm-8pm

1975 Mack Tri-Axle Dump, 237 Engine, 6 spd Trans. 17' Steel Body \$8,500 (717)739-9999.

1976 Mack U model, needs minor work, \$2500. 717/336-7375 No Sunday Calls.

1976 Shoo horse trailer, 2-axle, 2 stalls, fair condition, \$500. 814/942-3821.

1978 IH 1800 gas, 33,000 GVW, 65K, 16' Park Hurst bed, very good condition, heavy dump. 717-259-0677 Adams

1979 Chevy pickup truck, 305, automatic, inspected, runs good, \$500 or best offer. Would make a good farm truck. 717-445-5273

1982 MAC R Model TT, 5 speed, PF, Jake brake & tandem \$7500, 1976 Chevy C65 18' Omaha Grain box w/cattle racks, 5 + 2, new paint, inspected, ready for harvest \$7500 717-784-0111 evenings 717-784-6359.

1984 GMC 7000, 24' flatbed, overcab rack, 28,000 GVW, 8.2L diesel \$4495 717-523-8693.

1985 Toyota 4WD PU, BF Goodrich AT tires & wheels, good running gear, \$850. 717-367-7403

1986 C30 Chevy, flat dump, \$5995. York Co. 717-292-5696

1986 Chevy Scottsdale C30, 350 auto, PS, PB, AC, AM/FM cassette, dual wheels, long flatbed, \$3500. 814/942-3821.

1986 IH 52500 300HP Cummins 9spd. RoadRanger. 22' Flatbed, 32,000 GVW. Good Condition. \$13,500/obo.; 1998 Pequea 22' Flatbed Trailer, Torflex Axles, 14,000 GVW. Good Condition \$3,450/obo. NO SUNDAY CALLS (814)473-8231.

1987 Ford F-150, 4x4, 300 EFI, 4 spd, overhauled engine transmission, new clutch and radiator, body good shape, \$6,500. Evenings. 814-735-4554

1987 Volvo, 26' flatbed w/ power liftgate, 32,900 GVW, 6-speed, AC, AM/FM radio, good condition, \$9500. 717-484-0720

1965 Ford F750 dump, good condition, \$2000 OBO. '76 GMC cab & chassis, 48,000 GVW, 8V-71 Detroit, runs good, \$1800 OBO. '91 18' construction trailer, \$900 OBO. 717/739-4650 Sch. Co.

1969 Int truck, 16 1/2' good flatbed w/4' grain sides, \$600. (410)771-4425.

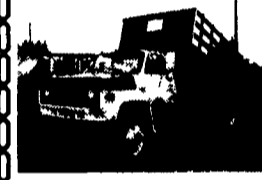
1969 Trailco aluminum dump trailer, 28' frame, 26' box, 11Rxx22 tubeless tires, \$5000 OBO. 717-438-3205



1990 Ford L8000 78 Diesel, 210 HP, 6 Speed Trans, New Paint & Tires. (Recaps on Rear) 83,499 Miles



1994 Peterbilt 200-30 Cab Over, 5.9 Cummins Diesel, 210 HP, PS, AC, New Tires, Brakes & Paint, 6 Speed Trans. 226,519 Miles



1985 GMC C-70 16 Flat Bed Dump, 366 V8 Gas, 28,000 GVCV 5 Speed 120,800 Mileage



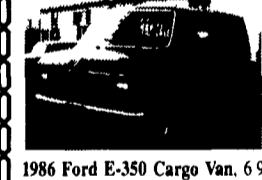
1990 Ford F450 Super Duty 460 Gas Eng. 5 Speed, Hyd Brakes, 14,500 GVW 155,600 Miles



1991 IHC 4900, GVW 32,500, Budd Wheels, DT 466, Eng 210 HP, 6 Speed Trans Air brakes, New Paint - White



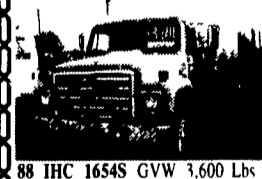
1981 GMC 7000, 4 Cyl DT Diesel w/Blower & Turbo, 5 Speed, Trans 2 Speed Rear, 33,000 GVW 20' Flat Bed Body, 51,000 mi, Hyd Brakes



1986 Ford E-350 Cargo Van, 6.9 Diesel Engine, Automatic, 9,300 lb GVW Excellent for Carpenter, Painter or Plumber Color Blue PA State Insp



1981 IHC 1654S 9 Liter Diesel, 5 sp Trans, 190 HP PS, No A/C, New Paint, Cab & Chassis, 20,500 GVW, 157,597 Original Miles Color, White PA State Insp



88 IHC 1654S GVW 3,600 Lbs Mileage 146,000, Gray, Metallic Cab, 6.9L Diesel Eng, 545T Automatic Allison Trans, Hydraulic Brakes, PS, No AC, Has 14 Ft Duralite Body, White, Rollup Rear Door, No Side Door Has 2,500 Lb Liftgate



1984 GMC 7000 366 V-8 Gas 5+2 spd Trans, Hyd Brakes, New Paint Color, Red 28,000 GVW, 108,184 Original Miles, New Tuneup New Service, New Tires, New Brakes PA State Insp



1995 IHC 4700 27,500 GVW, 81,176 Miles, Red, DT-466 210 HP Eng. 5 Spd Manual Trans Hydraulic Brakes, PS, No AC



I'm Completely refurbished from front to rear! The one way you can replace me is to buy new! 1986 GMC w/Thiele 8 1/2' Dump Bed

Excellent Trucks Ready To Go To Work For You. Must See To Appreciate.

Phone 717-898-0683
CHARTER ENTERPRISES, LTD.
270 Hostetter Road, Manheim, PA

1989 F-150 XLT Extended Cab, 4x4, V-8 302, 4spd w/Overdrive. \$6,500/obo. (717)241-2566.

1989 Freightliner COE, 11.1L, 60 series Detroit diesel, 9-spd trans, 886,000 miles, good shape, \$4200. 610-286-7953

1989 GMC 1/2 ton pickup, runs good, needs paint, \$1800. 1986 Int crew cab, C&C diesel, runs good, \$2500. 610-944-9871 evenings.

1989 Iveco Diesel Dump Truck w/Pintle Hook, Runs Good, Low Miles 23,000/GVW \$8,000 (717)244-1185.

1992 SLE Dodge 250 Cummins diesel, tow hitch and brakes, \$9,000. (908)996-6565.

1993 Dodge 250 Ext'd. Cab, Turbo Diesel 4X4, AT LE loaded, exceptional cond. 110,000mi. Everything works! Best offer. (717)362-8337 after 7pm.

1994 Dodge Diesel 4x4, Ram 2500 SLT, 5spd. A/C w/Matching Cap, 90,000/Miles. Has "R" on Title. \$13,900. (724)785-2667.

1995 Dodge Diesel 4x4, Ram 2500 SLT, 5spd. A/C 45,000/Miles. Has "R" on Title. \$16,900. (724)785-2667.

1995 GMC hot shot 215 Cat 6-speed, 12,000 miles, excellent condition, 84' sleeper, loaded track lighting, wood accents, TV, VCR, CB, AC, & much more! The ultimate show hauler, \$52,000. 724-586-7109

1996 Ford F-250, 4x4, powerstroke turbo diesel, XLT, auto, AC, 46K, \$21,500. Excellent 610-562-8945

1998 Chevy 1-ton, 4x4, dual wheel, flatbed, 454, 5-speed, 7K, AC, tilt wheel, CC trailer setup, \$21,500. 301-271-2365

1998 Ford L 9000, Tri-Axle Dump Truck, 300 Cummins, 8spd Lo-Lo Trans. 44,000lbs, Suspension, 15 1/2' Steel Body. Excellent Condition \$22,500. (717)739-4830.

1998 Super HD, 8-24 Pintle Hitch, Triple-Axle, 9/Ton, 12" I-Beam Main Frame, Rub-Rail w/Stake Pockets, 3-Axle Electric Brakes, 750-16 8Ply Tires. 5' Fold-Over Spring-Assist Ramps \$3,865. MANY OTHER MODELS AVAILABLE (609)965-4527.

1986 Red & Black GMC 3500 Dually, 4X2, 454 Gas Engine, fully equip, Gooseneck or tag along package, 65,000 original miles, excellent condition must see. 717-259-6549.

(2) 1987 Volvo F615 33,000 GVW, 20' reefer bodies w/Silver Hawk units. 1986 Volvo F7 33,000 GVW, 20' reefer body w/ Thermo King unit. 1990 Mack R-model 300 10-spd engine. 40' Great Dane reefer trailer. 717/587-2659.

22' steel cattle trailer w/3-way gate, new floor, 5th wheel, best offer. 410/557-6483.

26' Parker aluminum dump trailer, good condition, w/ tight gate, coal chute, tarp, 10x20, \$5500 OBO. 717-683-6004

'67 Int. 10-wheel dump truck, good condition, \$4500. 215-646-6873

81 IH 10-wheeler, 50,000 GVW, DT466, new 20' body, MD inspected. \$16,500. 410/556-6215.

'88 Ford Ranger XLT, long bed, 4 cylinder, 5 spd, PS, PB, air, AM-FM cassette, new radials, burgundy w/ matching fiberglass cap, 57,000 miles, excellent condition, \$3,975. 717-733-2873

89 Ford F-450, Super-Duty, Dually, 460 5spd, 10' Rack Body, Pintle Hook, Dual Gas Tanks 14,500 GVW. \$5,800.; 85 Encoline 9/Ton, 3-Axle Trailer, DOW 19' Flat, 4' Beaver Tail, Excellent Condition \$2,400. (717)836-2609.

'90 Ford F150, 4x4, 300 EFI, 5 spd, PS, PB, AM-FM, dual tanks, 66,000 one owner miles, 2 tone blue, new radials, excellent condition, \$8,300. 717-733-2873

90 Wilkins 42' walking floor trailer, 90 cu.yds, airride, good condition, \$26,500. 610/383-6818.

'91 Ford XL F150, 4x4, 300 EFI, 5 spd, PS, PB, AM-FM cassette, 47,000 original miles, 2 tone red, new radials, like new, \$9,950. 717-733-2873

'92 Ford Custom F150, 300 EFI, 5 spd, PS, PB, AM-FM cassette, dual tanks, new radials, dark blue, one owner, excellent condition, \$6,700. 717-733-2873

'92 Ford F250 Super cab, 4WD, 7.3L diesel, Centurian package, gooseneck bumper pull, 71K, garage kept! 717-369-2755

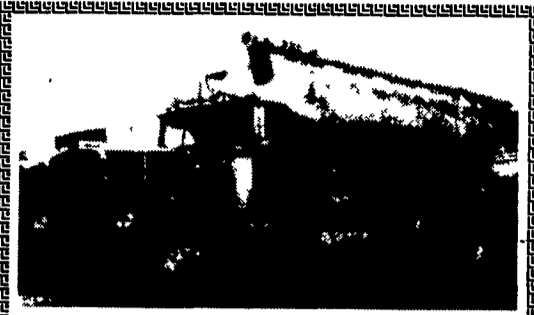
'92 Ford XL F150 super cab, 300 EFI, 5 spd, PS, PB, AM-FM, dual tanks, 50,000 one owner miles, burgundy, \$8,600. 717-733-2873

'93 Chevy S10 Tahoe extended cab, V6, 5 spd, PS, PB, AM-FM cassette, 39,000 one owner miles, excellent condition, \$7,950. 717-733-2873

Chevrolet #30 cube van with Morgan body, market or farm truck. York 717-741-3039

Coal Truck, High Lift, Chutes & Stands. 2 Bodies, Gas Engine. \$4,500. (610)759-9411.

Construction flat bed trailer used for backhoe, 19'6" dual axle, needs work, \$800. 717-653-5552



1974 KW 400 with Jake \$8,500
610-844-9871



1976 MACK DM685S Tri-Axle
237 Mack, 6 Speed Trans., 18,000 lb. Front, 44,000 Lb. Rears, Double Frame **\$9,500**
Curry Supply Co., Curryville, PA
1-800-345-2829



'96 GMC Top Kick
3116 Cat 250 hp 5+2 speed, 33,000 GVW, air brakes, trailer hook up, 10' dump w/tarp, high roof cab, 14,000 orig. miles.
717-354-3199

OUTTEN
TOTAL TRANSPORTATION CENTER

<p>96 GMC K1500 EXT. CAB 4x4, SLE Pkg, AT, A/C, V8, Nicely Equipped, 11,500 Miles GM Certified - Ask For Details \$26,995</p>	<p>97 CHEVY K1500 EXT. CAB 4x4, Silverado, 350 V8, Flexsteel Seats, Waldco Conversion, AT, A/C, Nicely Equipped, Only 700 Miles \$28,995</p>	<p>95 CHEVY K1500 EXT. CAB Silverado, 350, V8, AT, A/C, Nicely Equipped Leather, Only 24,000 Miles "Immaculate" \$22,995</p>
<p>98 CHEV K2500 PLOW TRUCK 4x4, 350 Vortec, A/C MSRP \$28,961 Sale Price \$25,700</p>	<p>98 CHEV K3500 STAKE BODY TRUCK 4x4, 350 V8, AT, MSRP \$30,521 Sale Price \$25,257</p>	<p>84 FORD E350 JAMBORIE MOTOR HOME 460 V8, AT, PS, PB, A/C, Real Clean, Must See \$12,995</p>

Outten Hamburg Rt. 61, Hamburg PA
1-800-451-2333 • 610-562-2216