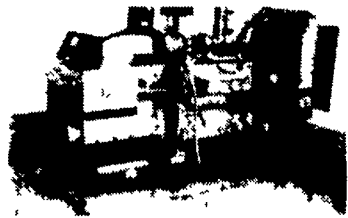


**POWER SYSTEMS ELECTRIC, INC.**



SPECIALIZING IN GENERATOR SALES,  
SERVICE AND RENTALS  
**(717) 933-5617 (800) 875-6964**

(2) 75 KW AC Diesel  
(1) 65 KW Ford L-P-G  
35 KW Chrysler L-P-G

New PTO Generators in Stock

*New & Used Transfer Switches*

**BUSH HOG SALTZGIVERS  
TRACTOR REPAIR**

1757 Baltimore Pike, Hanover, PA 17331

**NEW & USED TRACTORS  
AND EQUIPMENT**

**BUSH HOG MOWERS & LOADERS**

**NEW INLAND SNOWBLOWERS**

**717-632-9119**

**Late Model Used Equipment**

Ford 655E 4WD, Cab, Ext. Hoe, 750 Hrs.  
Ford 675E, 780 hrs., 4WD, Cab, Ext. Hoe  
JD 310 A TLB

8N Ford

Heister Forklift, 3500 Lb Lift

2120 Ford 4 WD w/ 7109 Loader, Turf  
Tires

4000 Ford SU Diesel P.S., I.P.T.O. - Cab

2 Ford 1953 Jubilee

2110 Ford Gas L.P.T.O. - P.S.

Ford Jubilee 1953 - New Paint

**Excellent Ford Tractors**

- 8870, cab, air, 4WD, super steer, weights, 4 remotes, 1,000 hrs
- TW25, cab, air, 4WD, 20.8x38, 1,900 hrs
- 7740 SLE, cab, air, 4WD, 18.4x34, 2,600 hrs.
- 7710, cab, air, DP, 18 4x34, weights, 4,000 hrs
- 7710, 4WD, roll bar, 18 4x34, triple remotes, 400 hrs.
- 7700, DP, dual remotes, 18 4x34, 5,800 hrs
- 7600, DP, 1 remote, 16.9x38, weights, local trade
- 6610 II, rollbar, DP, 18.4x34, 1,800 hrs.
- 6610, rollbar, DP, dual remotes, 16.9x30, 3,400 hrs.
- 6600, DP, dual remotes, 540/1000, 15.5x38, 3,100 hrs
- 5600, DP, dual remotes, 18.4x34, weights, 4,000 hrs.
- 5030, 4WD, canopy, shuttle w/Ford ldr., 250 hrs.
- 4610 II, 4WD, dual deluxe remotes, Ford QT ldr, 950 hrs.
- 4610 II SU, 8 spd, dual deluxe remotes, 14 9x28, 1,300 hrs.
- 4610 SU, 14 9x28, 1 remote, 2,100 hrs
- 4100, diesel, 8 spd, 16.9x24, 1 remote, 3,700 hrs.
- 4000, gas, 8 spd., PS, 13.6x38, 1975 model, 5,400 hrs.
- 3910 II, 4WD, 1989 w/Ford ldr, **SOLD**
- 3910 II, rollbar, 8x4 syncro, 14.9x28, 350 hrs.
- 3910, diesel, 14.9x28 w/Ford QT ldr, 1,400 hrs.
- 3000, diesel, 8 spd., 13.6x28, 5,000 hrs
- 2120, 4WD, shuttle, Ford ldr, 1,000 hrs
- 2110, 4WD, shuttle, Ford ldr., 950 hrs.
- JD 2955, cab, air, hi-low, 18.4x38, 1,900 hrs.
- JD 2755, roll bar, hi-low, 1991 model, 2,200 hrs.
- JD 2555, 4WD, canopy, hi-low, dual remotes, 1,200 hrs.
- JD 2040, canopy w/JD 145 ldr., 2,300 hrs.

**Equipment**

Ford 151 plow, 4x18 btms, auto reset  
Sauder 7' snow blade  
Sims cab w/enclosure  
18.4x38 Ford Axle Duals  
Weights to fit most Ford tractors

**Ford Loaders**

777D fits 6700 thru 7710 2WD  
DuAL 210 fits 7700 & 7710, 2WD & 4WD  
JD 145 w/valve, off JD 2030

*All Tractors Tested On Our Farms.  
Tractors Stored inside  
-Please Call For Appointment-*

**Burkholder Bros.**

Lebanon, PA 17042

(2 miles West of Schaefferstown)  
2 Locations

**717-272-2352**

**717-949-2123**

Lloyd  
330 Crest Rd.  
Lebanon, Pa.

Leon  
400 Flintville Rd.  
Lebanon, Pa.

**GET PRECISE  
APPLICATION  
CONTROL**

New Holland side-delivery spreaders provide the most material control. Whether you're light top dressing, laying down a heavy layer, or anything in between, the Model 3110 puts the right amount of material right where you need it.

- Handles a wide variety of material - slurry, gutter material, cow manure, even poultry litter
- V-tank design delivers material to the auger fast
- Heavy -duty round-core auger produces less drag
- Double-acting hydraulic cylinder moves auger up and down to keep material flowing
- Hydraulic gate and specially designed expeller give precise application control
- Backed by a 10-year warranty against tank rust-through



NEW HOLLAND

See us for all your spreader needs.



**QUALITY USED EQUIPMENT FOR SALE**

- IH 584 Tractor
- NH L553 Skid Load **SOLD**
- MF 520 12 ft. Disc Harrow
- Century 200 Gal. 3 Pt. Sprayer
- Gleaner "K" Combine w/Grain Platform
- NH 890 Harvester w/Heads
- NH 782 Harvester w/Heads
- NH 27 Blower
- NH 28 Blower
- NH 717 Harvester

**HAY EQUIPMENT**

- NH 488 Haybine
- (2) NH 489 Haybines
- (2) NH 492 Haybine
- NH 499 Haybine
- NH 1495 Haybine
- NH 412 Discbine
- NH 256 Rake
- JD 894A Hay Rake
- Zimmerman 7 1/2 Ft. Hay Tedder
- IH 430 Baler w/thrower
- NH 310 Baler w/Thrower
- Hesston 555T Round Baler
- JD 27 14 ft. Flail Shredder
- Bush Hog 6' Flail Mower

**TOUGHER THAN  
THE REST**



The New Holland Model Lx565 Super Boom™ skid-steer loader is tougher, more durable and more reliable than ever.

The "Lx565" offers a 40 horsepower diesel engine with an SAE load rating of a powerful 1,500 pounds.

The Pick Up 'n Go™ universal attachment system makes it compatible with New Holland and competitive attachments. The strong boom design and massive loader pins make it more reliable.

And the quick engine access makes it easier to service

See what makes the Super Boom so tough.



NEW HOLLAND

**BHM FARM & LAWN EQUIP.**

SALES - PARTS - SERVICE  
Route 934 - 2 Miles North of Anville, PA  
Telephone 717-867-2211

**NICARRY TRACTOR**

PO Box 399 Rt. 22 West, Fredericksburg, PA 17026

Hours: Mon.-Fri. 8-5; Sat. 8-12;

Closed Sundays

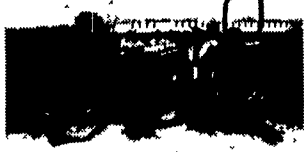
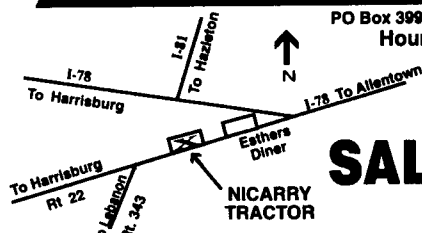
**717-865-7575**

Fax 717-865-7676

Specializing in Quality Used Compacts

**SALES-SERVICE - RENTALS**

We Are 1/2 Hour From Harrisburg / 1/2 Hour From Reading  
45 Min. From Allentown



Kubota L2900 GST 4x4  
w/Loader,  
(Very Sharp)



Kubota L245 4x4 w/Loader &  
Backhoe



Kubota B8200 4x4 w/Loader &  
Backhoe



NH Lx565 Skid Loader  
Low Hrs., Excellent Cond.



Farmall H, Nice Condition  
\$1500



Kubota B7100 Hydro  
w/Belly Mower



Honda 4514 w/48" Mower,  
Rear Bagger & Front Blade  
\$1,800



Kubota B8200 4x4  
w/Loader (Looks Dull -  
Runs Great) \$6,900



Kubota F2400 4x4 w/60"  
Front Mower & Vac System



10 & 12 Ft. 5-Ton  
Dump Trailer



Kubota B8200 4x4 w/Loader &  
60" Belly Mower



Starting At \$1,500  
Large Inventory of Trailers  
Pequea 1018 18 ft. Deck Overs  
Livestock Trailers,  
Dump Trailers

\* All Financing with approved credit and 25% down