

J.L. HOLLINGER & SONS INC.

RT 72N, Manheim, PA

717-664-2444 8 AM To 6 PM

717-665-2354 After 6 PM

NEW & USED Farm & Construction Equip.

FAX 717-664-2835

BACKHOES

- '97 JCB 2145 Series II, 4WD, Cab., Ext. Hoe, Forks, Boom.....**\$45,500**
- Case 580C, 2WD, Cab, Ext. Hoe 4N1.....**\$10,500**
- Case 580 Super, 2WD, Cab, Ext. Hoe.....**\$14,500**
- '90 Ford 655C, 4WD Cab, Ext. Hoe.....**\$27,000**
- '94 Ford 655D, 4WD Cab, Ext. Hoe.....**\$35,000**
- '91 Case 480F LL, w/Broom.....**\$17,000**

WHEEL LOADERS

- Cat 930 EROPS, Cab, GP Bucket.....**CALL**
- '85 JD 544C, EROPS, Forks w/Clamps.....**\$25,000**
- '96 Case 621B, EROPS, GP Bucket.....**\$75,500**
- '90 JD 544E, EROPS, GP, Very Good.....**\$47,500**
- '88 Cat IT 18B, EROPS, Air, w/Forks, Bucket.....**\$49,000**
- '90 JD 444E, EROPS, GP Bucket.....**\$39,000**
- '93 Cat 918F, EROPS, GP Bucket.....**\$48,500**

SKID LOADERS

- '87 Case 1845C Dsl., Hi Flow Hyd.....**\$9,000**
- '94 Bobcat 853 Dsl., Aux. Hyd.....**\$8,500**
- '96 Case 1840, Dsl, GP Bucket.....**\$15,000**
- '92 Case 1845C, Dsl, Aux Hyd.....**\$12,500**
- Ford N.H. L-785, Dsl.....**\$8,900**

TRUCKS/TRAILERS

- '81 IH S-1700 Dsl, w/Dump.....**\$4,500**

FARM TRACTORS

- White 2-70, 4WD EROPS, w/Loader.....**\$11,900**
- Case IH 485 w/Mower.....**\$9,000**

EXCAVATORS

- '94 JD 790 E LC, Long Stick.....**\$85,000**
- '90 JD 290D LC w/Coupler.....**\$35,000**
- '90 Hitachi Ex 100 LC Long Stick.....**\$29,000**
- '89 Case 170C LC, Long Stick.....**\$27,500**

- '90 Case 688, Long Stick.....**\$22,500**
- Case 9030.....**\$65,500**
- '95 Case 9010B, Excl. Cond.....**\$69,500**
- '89 Hitachi EX200 LC, w/Air.....**\$46,000**

CRAWLER DOZERS

- Cat D-3B Long Track w/Winch.....**\$20,000**
- '86 Case 1450B Outside Angle, Very Good.....**\$20,000**
- '89 Case 1550 S/T, Hyd. Static, Very Good.....**\$49,500**
- '88 Cat D6H LP ROPS S/T.....**\$59,000**
- '90 Dresser TD-25G EROPS w/Air S/T.....**\$55,000**
- '94 Cat D-5C 6 way w/Cab.....**\$50,000**

CRAWLER LOADERS

- '86 Case 8550 4N1, ROPS w/Sweeps.....**\$29,500**
- '89 Case 455C, 4N1, ROPS.....**\$19,000**
- '89 JD 655B OROPS, GP Bucket, V. Good, 1-Owner.....**\$35,500**
- JD 555G, GP Bucket, OROPS.....**\$39,000**

FORKLIFTS

- '90 Case 585E, 2WD, 21' Mast, Dsl.....**\$19,500**
- '94 JCB 506B, 36' Shooting Boom, Excl. Cond.....**\$37,500**
- '85 Lull 644T, Highlander, Deutz Dsl., V.G. Cond.....**\$23,000**
- '96 Case 586E, 4WD, 21' ROPS.....**\$28,500**
- Hyster H-200, 20,000 Lb. Lift.....**\$9,500**
- Clark 12,000 Lbs, ROPS, Propane.....**\$4,750**

MISCELLANEOUS

- Ravo 4000 Street Sweeper Dsl.....**\$6,500**

GRADERS

- '84 Gallion A550 EROPS Diesel, Power Shift.....**\$24,500**

Daily — Weekly — Monthly Rentals

SALES • SERVICE • RENTAL

"No-Jumpin"



Farmers! Check out this new hitch pin. Fast, Easy, Secure 7/8" diameter \$12.00 each + \$3.99 UPS 3 for \$35 Free UPS

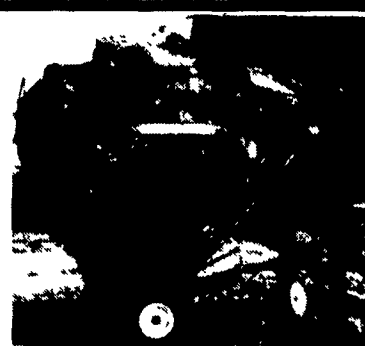
Weaver Distributing 1-800-Weaver-D

\$6,800

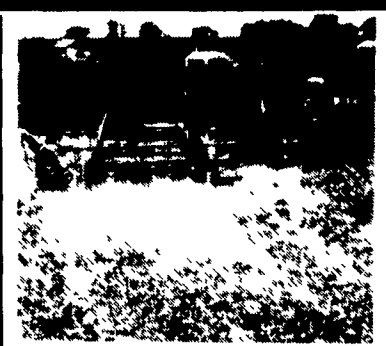


IH 786, 8 h.p. Not Fancy But Runs Good

Madey Farms 814-467-8839



Hay Basket



Tandem Hay Rake Hitch



Round Bale Carrier Can Load w/ 3 PT. Spear



Running Gear

Mfg. By: AGRI-LINK

144 Fairmount, Ephrata, PA 17522

(717) 354-0282 Fax (717) 335-9260

FORKLIFTS & MACHINERY

MOVING - MUST SELL

CLOSING OUR 10,000 SQ. FT. WAREHOUSE PRICES SLASHED - ALL EQUIPMENT LISTED ON WEBSITE

www.HymanEquipment.com

1995 Kobelco Mini Excavator Hyd. Hammer. Very Good Condition **\$18,000**

12,000 Lb. Cap 4WD & Steer, Detroit diesel **\$12,500**

6000# CAT V60B Pneumatic, Smokes **\$1,800**

10,000# Towmotor Light Smoke ~~\$6,000~~ **\$4,500**

2,000# Yale Complete Truck ~~\$1,500~~ **\$600**

MECHANICS SPECIALS
6,000 LB. CLARK Dual tire smokes **\$1,500**

- 6,000 lb Cat, air tire, smokes **\$1,800**
- 5,000 lb Yale, needs P/S pump **\$1,500**
- 2,000 LB Clark, solid, smokes **\$800**

20+ PNEUMATIC FORKLIFTS
2,500 lb, Hyster, 3 wheel **\$3,500**
4,000 lb, AC dual tired, diesel **\$4,500**
5,000 lb AC, 10' LPG, auto, 2 spd **\$4,500**
8,000 lb Hyster, 13' lift, SS, diesel **\$7,500**
11,000 lb Hyster, H110F, 6' Forks, Dsl **\$14,000**
12,000 lb Hyster, H120C 15' lift **\$8,500**
15,000 lb Hyster, 18' lift, gas **\$12,000**

20+ SOLID TIRE FORKLIFTS
3,000 lb AC, 9' lift, LPG.. **\$2,300**
4,000 lb AC LPG 3 stage **\$3,000**
4,000 lb, Clark, old, very good, LPG **\$1,800**
5,000 lb Yale, 1980, 3 stage, LPG **\$2,500**
10,000lb Yale, 9' lift, LPG **\$6,500**
15,000 lb. Hyster, LPG, auto, vg **\$19,000**

25+ ELECTRIC FORKLIFTS
2,500 lb Yale, walkie, 2 stg 71" x 96" **\$2,500**
3,000 lb, BT reach truck, 3-stage to 23' **\$5,000**
3,000 lb Yale, 2-Stage, SS **\$3,000**
6,000 lb Hyster, 4-stage to 20', SS, vg **\$5,000**
6,000 lb Pettibone, 15' **\$6,000**

250+ MACHINES
Aerial platform lifts, 20', air tire... **\$2,000**
AC unit mobile diesel, 300,000 BTU... **\$5,000**
Milling & drilling machine, Enco #30 **\$1,000**
L-Sealers & shrink tunnels **\$2,500+**
Strapping machines **\$3,500+**
Fire water pumps (2) 4" pumps, 500 GPM, 2 Diesel Eng, in 40' container... **\$15,000**

SELLING SHOP EQUIPMENT
Tires Press, Service Lift For Forklifts, Hose Crimping Machine, Parts Washing Machine

ALL ELECTRIC FORKLIFTS AND CHARGERS MUST SELL

Complete Forklifts w/masts & forks, not running **\$500 each** Many to choose from!

5000# Hyster Light Smoke ~~\$2,000~~ **\$1,800**

(2) 10KW Generator Sets On Trailer ~~\$2,000-~~ **\$500 for Both**

6000# Toyota, 3 Stage, LPG, Starter Ring Gear Bad ~~\$3,000~~ **\$1,500**

4000# Hyster, Runs, Starter Ring Gear Bad ~~\$1,500~~ **\$700**

Sprayer, Duster, Berry Sprays Liquid or Powder ~~\$7,500~~ **\$4,900**

Aerial Platform Lifts, (MEC) Air Tire, 20' Lift ~~\$4,900~~ **\$2,000**

7000# Hyster S/D, Light Smoke ~~\$4,500~~ **\$3,000**

3000# Yale Electric, Good Truck w/Battery & Charger ~~\$3,900~~ **\$2,000**

5000# Yale Runs, Needs A Little Work ~~\$2,500~~ **\$1,500**

TANEYTOWN FARM EQUIPMENT

Route 194 and Brown Road 410-751-1500

Bush Hog® King Cutter Toll Free 877/751-1500

Int. 1456 **\$5,900**

JD 720, 3 Pt, PS **\$4,000**

Bush Hog 2615 Flex Wing Mowers Prices starting at \$7,995

Consignment Auction **October 26**

TRACTORS	LAWN & GARDEN
Case 580C TLB \$11,500	Snapper Comet 30 SOLD \$450
Farmall A \$500	Ingersoll 3118 PS, 50 Hrs \$3,995
Farmall H w/ Side Sickle \$1,750	Ariens 11 HP \$495
Farmall M, w/3 pt CSOLD \$1,750	MANURE SPREADERS
Farmall Cub w/Mower, Nice \$2,495	Ni 224 Tandem Spreader \$1,995
Farmall 504 Gas 3 Pt \$2,950	NH 791 Tandem Spreader, 360 Bushel, Extra Clean \$3,495
Ferguson TO 30 \$1,950	Ni 353 320 Bushel \$2,750
Ford 4500 TLB \$4,000	NH 676 275 Bushel \$2,500
Ford 3910 Dsl, PS \$6,995	Gehl 250, 250 Bushel \$1,750
Ford 3500 TLB w/Cab, Good Condition \$5,495	MISC.
Ford 8' 1, PS, Live SOLD \$3,995	Danuser Post Hole Digger \$595
Ford NAA \$2,900 \$2,600	Shaver HD8 All Hyd Post Driver \$1,500
Int 2400 w/Loader \$3,495	80 Chevy 1-Ton Dually, 454 Auto, AC, 79,000 Org Miles \$4,900 \$3,500
Int 404, 3 Pt, Cleat SOLD \$3,500	NH 850 Round Baler \$1,995
JD 1050 4x4, PS \$7,495	NH 273 Baler w/Thrower \$1,950
JD 520 3 pt \$2,900	BH 120 HP Hyd Rear Blade \$2,495
Long 360 w/Loader, 400 Hrs \$8,300 \$7,995	Blade York 7' HD \$595
MF 204 Forklift \$2,000	Gehl Blower #99 \$395
COMPACT TRACTORS	Disc Chisel Int 5 Shank \$1,800
Case IH 275 4x4 w/Loader \$7,495	Oliver One Row Picker \$495
MF 1030 Dsl, 25 HP, 4x4 Loader, 1600 Hrs \$7,900 \$9,300	White 5400 No Till Planter \$595
MF 1010 4x4, 600 Hrs \$5,495	White 12' Transport Disc \$795
MF 1010 Hydro \$3,995	Disbine Krone 9 \$3,995
Power King, 14HP, 3 Pt \$1,795	Hesston 12 Haybine \$2,995
Kubota B6100 4x4 \$3,995	Ni #314 Sheller w/#325 2RN Picker \$1,500
Ford 1310 4x4 Loader \$8,000	JD 8300 Drill, 21x7 DD Grass, Nice SOLD \$2,995
MOWERS	JD 8300 Drill, 16x9 DD, Press wheels, Clean \$2,495
Woods 214 14' Pull \$1,750	Haybine JD 1209 \$2,995
Bush Hog 406 6' 3 pt \$2,995	
Bush Hog 2615 Batwing \$1,495	
Woods L59 Belly Mower \$800	
MF Balanced Head, Nice Rhino 6' Pull \$995	
Woods C80, 3 Pt \$595	
Woods Cadet 72 \$750	
Int 6' Pull \$495	
	Weaver Post Drivers;
	HD8 - \$1,250
	HD 10 - \$1,950
	We Can Deliver Anywhere!

Baltimore, MD Call Alan day or night

410-337-3570