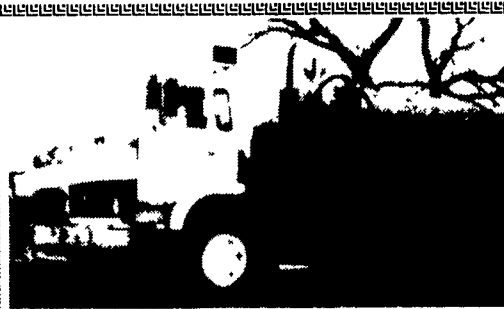




1994 Peterbilt 377SBA, 425 CAT, 10 spd, 230" WB, 3.55 RRS, 490,000 miles, \$45,000 OBO, work available to qualified buyer 717-354-5583 leave message



1996 GMC Sierra SLE, 6.5 Turbo Diesel, AT, PS, PB, PW, PL, A/C, 8600 GVW, 46,000 Miles \$11,800 717-355-0644



Volvo Vacuum Truck, 1983, 3000 Gal, Good Condition \$15,000

Giant Vacuum Truck, 4000 Gal. Perfect Condition, Deutz Air Cooled Motor, 1987 \$20,000 215-855-2946

1964 FORD 350 Flatbed Dually, Inspected, Runs Great, New Tires (717)529-2330

16' Steel Trailer Tandem Axle, Hydraulic Brakes, New Tires, Wooden Racks (717) 529-2330

PRE-OWNED CARS

PRE-OWNED TRUCKS

PRE-OWNED MPV'S

| | | |
|---|---|--|
| '94 PONTIAC FIREBIRD AM/FM Cassette, A/C, Auto, Very Sharp Looking Vehicle | '89 FORD FC-250 XLT 8600 GVW, Light Duty 8 Cyl, 5 Spd, AM/FM, Super Clean | '96 CHEVY BLAZER LS A/C, Auto, AM/FM Cass, Local Trade, Sharp! |
| '98 LINCOLN MARK VIII A/C, A/OC, AM/FM Cass, Fully Loaded Luxury Vehicle | '96 FORD RANGER XLT 6 Cyl, Auto, AM/FM Cass, One Owner, Priced To Sell | '95 FORD WINDSTAR GL 2-A/C, Auto, AM/FM Cass, Super Family Vehicle |
| '96 FORD CONTOUR GL Sdn, A/C, A/OD, AM/FM Cass, "3" to Choose From - Must See | '93 CHEVY S-10 S/C A/C 5 Spd, AM/FM Stereo, Super Nice | '93 FORD EXPLORER SPORT A/C, A/OD, AM/FM CASS, Must See, Super Clean |
| '96 LINCOLN TOWN CAR Fully Loaded with Luxury, "2" to Choose From | '94 FORD RANGER S/CAB XLT 4x4 A/C, 5 Spd, AM/FM Cass, Super Nice | '95 FORD BRONCO EB AC, Auto, AM/FM Cass, Fully Loaded |
| '93 MERCURY SABLE GS SW -AC, A/OD, AM/FM A MUST SEE!!! | '97 FORD F150 4X4 DIESEL DUMP A/OD, Super Nice Truck, A Must See!!! | '97 FORD EXPEDITION XLT A/C, A/OD, Fully Loaded, One Owner, Super Clean |
| '96 LINCOLN CONTINENTAL Fully Loaded Luxury 8 Cyl, Fun to Drive | '97 FORD F-150 S/C XL A/C, A/OD, AM/FM, One Owner, Very Nice | '95 JEEP WRANGLER 5 Spd, AM/FM Cass, 4 WD, Hard Top, Super Clean, Fun To Drive |
| '95 FORD TAURUS GL SDN A/C, A/OD, AM/FM Cass, One Owner, Super Clean!! | '95 FORD RANGER XL 5 Spd, AM/FM, Low Miles | '95 JEEP CHEROKEE COUNTRY A/C, Auto, AM/FM Cass A Must See |
| '95 FORD ESCORT LX SW A/C, A/OD, AM/FM, Low Miles | '94 FORD RANGER S/C SPLASH 4x4, A/C, A/OD, Very Nice, Fun To Drive | '96 MERCURY VILLAGER LS A/OD, A/C, AM/FM, Real Family Vehicle |

ENGLE-RISSINGER AUTO GROUP

Midway Between Halifax And Millersburg • 717-896-3421 • 1-800-242-8075
HOURS: Monday-Friday 8:30 AM - 8:30 PM; Saturday 8:30 AM - 3:00 PM

Woodcrest Motors

SPECIALIZING IN TRUCKS & VANS
1200 North Reading Rd., (Rt. 272) Stevens, (Lancaster Co) PA 17578
717-336-3130

96 CHEV K2500 EXT. CAB
4x4, 5 Spd, A/C, 350 Vortex, Long Bed w/Ltner, AM/FM Cass., 33,000 Miles

95 DODGE RAM 1500 4x4 SLT LARAMIE, V8, AT, A/C, 59,000 Miles, Most Options, Green

94 CHEV KODIAK DUMP 10 ft Dump Body, 3116 CAT, 6-spd, A/C, 25,700 GVW, 41,000 Miles

92 DODGE DAKOTA EXT CAB V6, AT, A/C, 83,000 Miles \$6,995

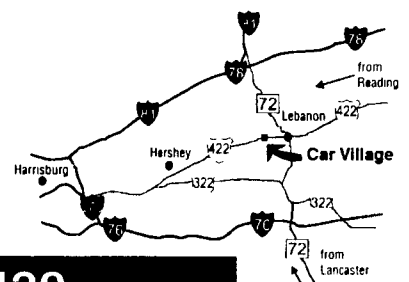
(2) **92 GMC TOP KICK** Lo Pro 366 V8 Gas, AT, PS, PB, 79,000 Miles

95 FORD F250 EXT CAB 4x4 XL V8, AT, A/C, Dk Green, 70,000 Miles

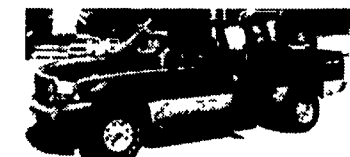
Business Hours:
Mon.-Fri. 9 to 9;
Sat. 9-4

RTE. 422 WEST LEBANON, PA
(Across From Lebanon Valley Mall)

CAR VILLAGE
HEAVY DUTY TRUCKS



PHONE 717-274-2000 Toll Free 1-800-650-1420



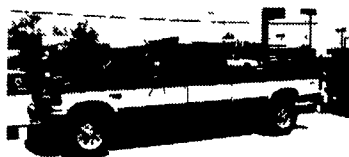
4x4 QUAD CAB
99 FORD F350 SUPER DUTY SUPER CAB 6-1/2' Box, Nice to Drive Easy to Park, Powerstroke Turbo Diesel, Auto, A/C, CD Player & Plenty More



GREAT TOW MACHINE
93 DODGE CLUB CAB DUALLY Cimmins Turbo Diesel 5 Spc, Factory Trailer Pkg, A/C, Chrome Simulators, Very Nice, Only 65,000 Mi \$17,900



RACK BODY DUMP
94 CHEVY H.D. 3500 Heavy 15,000 GVW High Output 6.5 Turbo Diesel, H.D. 5 Sp., A/C, 14 ft. Body, Only 26,000 Clean Miles. Will Sell As Chassis



BEAUTIFUL CREW CAB
97 FORD F350 4 DOOR 4X4 Like New, Only 6,000 Miles, All New Tk Warranty, Powerstroke, AT, A/C, 40/20/40 Sent Trailer Tow Pkg, Limited Slip Axle



5 SP DIESEL SUPER CAB
97 FORD F250 4x4 HEAVY DUTY It's Perfect - Like New But Lots Cheaper Only 15,000 Miles, Powerstroke 5 Sp A/C, New Tk Warranty



1 TON DIESEL AWD 95 FORD F350 XLT Powerstroke turbo diesel, AF, A/C, Dual Tanks, Tow Pkg., Limited Slip 4:10 Gears



94 DODGE 2500 4X4 HEAVY DUTY 1/4 TON Cummins Turbo Diesel Auto, A/C, Loaded Fact. Trailer Pkg., Chrome Wheels, Good Looker \$2,000 Mi. \$19,900



CUMMINS DIESEL
97 DODGE 2500 4X4 A Must See, Very Clean, Only 31,000 Miles, Auto, A/C, CD Player, Trailer Tow Pkg, New Tk. Warranty



DIESEL CLUB CAB 97 DODGE 2500 4x4 Great Looks & A Strong Truck, Cummins Auto, A/C, H.D. Trailering Pkg., Only 22,000 Miles, New Tk Warranty



5 SP DIESEL 4x4
92 FORD F250 Heavy Duty 3/4 Ton 7.3 Diesel, 5 Sp, A/C, Only 79,000 Miles



1 TON DIESEL 97 FORD F350 XLT Powerstroke Diesel, AT, A/C, Dual Tanks, Aluminum Wheels, Solid Front Axle, Only 17,000 Miles, Very Clean



4x4 CREW CAB DUALLY
99 FORD F350 SUPER DUTY Hard To Find, But Good To Own, Powerstroke Diesel, AT, A/C, H.D. Tow Pkg, 40/20/40 Sent



OLDIE BUT GOODIE
87 FORD F250 4x4 Diesel Power, 4 Sp Trans, Gooseneck & Class 3 Hitches, Vinyl Floor, Great Farm Tk. \$7,900



90 IH DUMP TRUCK
7.3 Diesel, 5Spd Trans, Central Hydraulics, Snow Plow & Salt Spreader, 10R22 5 Tires, Real Clean



4x4 4-DOOR
99 FORD F350 SUPER DUTY It's A Beauty, Loaded XLT Captain Chairs Console Powerstroke Turbo Diesel, AT, A/C, CD Player Trailer Tow Pkg., New Tk Warranty



MECHANIC'S TRUCK
95 DODGE 3500 Omaha Utility Boxes, 360 Magnum V8, Auto, Very Clean, 32,000 Miles, New Tk Warr \$17,900



6 SP 99 FORD F350 SUPER DUTY
4x4 CREW CAB Rare 6 Speed Powerstroke, Turbo Diesel, Capt Chairs, Console, All Options, H D Trailer Pkg



4 x 4 FARM TRUCK 81 CHEVY V8, 4 Sp., Dual Rear Wheels \$5,500



53,900 75 CHEVY C-60
366 Gas V8, 4 Sp Trans, 2 Spd Axle, 8 25 x 20 Rubber, 21,000 GVW, No CDL Required



4x4 SUPER CAB 99 FORD F350 SUPER DUTY XLT, Powerstroke Diesel, AT A/C, Power Everything 4 Door Opening, CD Player



FARM TRUCK 92 GMC 2500 2 Wheel Drive Heavy Duty 8600 GVW, 350 f.i. V8, 5 Spd., A/C, Vinyl Floor, Runs Strong \$8,900



WORK TRUCK 97 FORD F350 XL 4 Wheel Drive, Not Fancy Just Pure Truck, 7.3 Powerstroke Diesel, Auto, Solid Front Axle H.D. Suspension 22,000 Real Clean Miles



4X4 MECHANICS TRUCK
97 FORD F250 XL Like New, Only 100 Miles, 351 V8, Auto A/C, Stahl Body, New Tk Warranty. Only \$23,900



RARE FIND 4X4 DIESEL TAHOE
6.5 Turbo Diesel, Auto, A/C, TR, Cruise, Power Everything, Leather Seats, Aluminum Wheels, Only 41,000 Miles



5 SP DIESEL 96 DODGE 2500 4X4 Heavy Duty 3/4 Ton, Cummins Turbo Diesel, 5 Sp, A/C, Trailer Tow Pkg, Vinyl Floor Mat, Only 19,000 Miles, Real Clean