

73 Chevy C60, Rollback, 2-Car Carrier w/Cheveron 20' Steel Bed, Hyd Tow-Bar, B&B, 5&2 Trans. 59000/Orig. Miles, Rusty Cab, \$4,500/obo. (732)591-2726.

'78 Chevy Blazer, 4WD, 350, auto, runs, \$700 OBO. Call 410-287-6882

'78 Ford cattle truck, good tires, \$2,500. Franklin County, (717)597-7295.

'79 White Road Boss dump truck, new motor, 230 Cummins, new rear & trans, S/A \$8500. '79 General trailer, 17' flat deck, 5' Beavertail, \$3000. 717-354-3163

81 IH 10-wheeler, 50,000 GVW, DT466, new 20' body, MD inspected. \$16,500. 410/556-6215.

85 Ford F250 4x4, 120,000 miles, good tires, good inspection, mechanically good, cosmetically fair, \$2900. 717/336-7375 No Sunday Calls.

'88 Ford Ranger XLT, long bed, 4 cylinder, 5 spd, PS, PB, air, AM-FM cassette, new radials, burgundy w/ matching fiberglass cap, 57,000 miles, excellent condition, \$3,975. 717-733-2873

'90 Ford F150, 4x4, 300 EFI, 5 spd, PS, PB, AM-FM, dual tanks, 66,000 one owner miles, 2 tone blue, new radials, excellent condition, \$8,300. 717-733-2873

90 Wilkns 42' walking floor trailer, 90 cu yds, airride, good condition, \$26,500 610/383-6818.

'91 Ford XL F150, 4x4, 300 EFI, 5 spd, PS, PB, AM-FM cassette, 47,000 original miles, 2 tone red, new radials, like new, \$9,950 717-733-2873

'92 Ford Custom F150, 300 EFI, 5 spd, PS, PB, AM-FM cassette, dual tanks, new radials, dark blue, one owner, excellent condition, \$6,700 717-733-2873

'92 Ford F250 Super cab, 4WD, 7.3L diesel, Centurian package, gooseneck bumper pull, 71K, garage kept! 717-369-2755

'92 Ford XL F150 super cab, 300 EFI, 5 spd, PS, PB, AM-FM, dual tanks, 50,000 one owner miles, burgundy, \$8,600 717-733-2873

Ford F600 w/new grain body & lift, excellent condition. Body 16'x40" high Must see to appreciate \$9900 304/725-6174.

IH Load Star w/16' Bed., 16' Flatbed Trailer. (717)362-8597.

RIVER'S TRUCK CENTER

ROUTE 24 - CAPE HORN RD
RED LION, PA 17356
(717) 244-4903
Now Providers of New Western Star Trucks, Slots Available



1993 GMC W-4
14' Flatbed w/Sides,
Diesel, Automatic, 11,050
GVW, Clean
\$11,900



1998 MITSUBISHI FG 4X4
14' Cab and Chassis,
Diesel, 5 Speed,
12,000 GVW
Call For Details



1992 IHC 4700
14' Flatbed Dump, DT
360, 5 Speed, PS, 130K,
25,500 GVW, No CDL
\$18,900



1990 Ford Super Duty
7.3L Diesel, 5 Speed,
A/C, 12' Flatbed, 14,500
GVW
\$7,900



1995 Ford E350 14 ft
Reefer Van-CB10 -
Thermo King Unit, A/C
Auto, 11,000 GVW,
Like New Condition



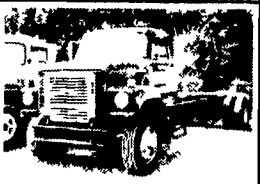
1989 IH DT466, 6 Spd,
33,000 GVW, A/B, 136"
C to A - 135,000 Miles,
Ex Cond



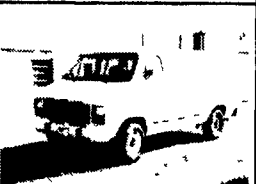
1994 GMC W4 Diesel,
5 Spd, A/C, 14,250
GVW, w/12 Ft Van, Ex.
Cond Off Lease
\$11,900



1979 F-800 Ford V8
5+2 Spd, 33,000 GVW,
9 Ft Dump, 90,000 Mi.,
Ex Cond \$4,900



1978 IH DT466 5+2
Spd, 34,000 GVW,
Double Frame 175" C
to A - Low Mileage -
NEW - 11 225 Tires
\$4,900



1993 G30 Chev One
Ton Van, 350 Auto,
82,000 Miles
\$5,900



1984 Chev P-30 12 Ft
Alum Step Van Diesel,
Auto, 12,000 GVW,
80,000 Miles, Clean
\$4,900



1981 CO8000 Ford
3208 Cat, 5+2 Spd,
38,000 GVW A/B 136"
C to A \$4,800



1980 GMC S/A
Tractor 3208 Cat, 250
HP 9 Spd, Air Ride,
Very Clean \$4,800



1975 Mack T/A (1983
300 HP Motor) 5 Spd
Double Frame Heavy
Truck, 56,000 GVW
\$4,900

MARTIN'S USED TRUCKS & EQUIPMENT INC.

560 Lampeter Rd
Lancaster, Pa 17602
Robert Martin (717) 392-6266
(717) 299-6200

Reefers • Vans • Flatbeds • Used Parts

WE SERVICE WHAT WE SELL

E-TOWN DODGE

'94 Chevy K2500
Super Cab
4x4 Silverado
(47) New quad cabs
available.

(8) Used New Style
Pickups mostly SLT's

(12) 1998 24 Valve
New Style Diesel
Quad & Reg. Cab
In Stock

'97 Tahoe LT
w/Leather very nice

(15) Durangos in stock

ASK FOR
MILTON HESS
Certified Truck Specialist

717-367-6644
717-653-6667

Elizabethtown, PA

TRUCKERS
27' RATCHETS.....\$15.95
WINCH STRAPS.....\$12.95
RUBBER T. STRAPS...54¢
COMPLETE ROLL TARP SYSTEMS
TIRONIE TARPS
(800) 874-2928 • FAX: (717) 584-3127

FOR SALE

Mr. Contractor-
Reading Space Utility Cap Like New,
Excellent Condition, Ladder Rack
CAR VILLAGE, Lebanon
717-274-2000

ALUM-LINE, INC.

The Leader In Heavy Duty Construction

"More Trailer - Less Money"

All-Aluminum Livestock Trailers, Bumpers & Goosenecks • 8' to 39' Lengths • Double Deck Package Available

"The Finest Truck Bed You'll Own"

All-Aluminum Stake Body Beds • 6' To 24' Lengths • Many Standard & Optional Features • All Types of Tool Boxes

Also from Alum - Line, a complete line of aluminum pickup boxes and truck tool boxes

Wolfe Auction
9801 Hansonville Rd.
Frederick, MD 21702
800-443-9580

ALL STEEL REPLACEMENT TRUCK BED

7'X70" W or 80" W
8 1/2' Lx80" W or 90" W
10' Lx8" W, 12' Lx8" W

Also Available In 4'x7' and 4'x8'

5'x8' Starting at \$650

UTILITY (TILT OR GATE MODEL) SIZES
5 x8 5'x10 2000# GVW 5 x10
6.5 x12, 3000# GVW

UTILITY WITH GATE-SIZES:
16 x77", 18'x77", 7,000# GVW

ALSO 84" WIDE!

CAR HAULER TRAILER:
16'x78" & 18'x78" Includes 5' Beavertail
7,000 lb GVW 4' self storing ramps

Quality Trailers Built Locally By "PA International"

Car Dollie

Sale \$795

24' 10 Ton Dually Trailer w/Air Brakes \$7,500

'92 Ford Super Duty XLT w/12' Flatbed \$14,900

Used 19' 15 Ton Tri-Axle Trailer \$1,995

Over 200 Trailers In Stock
Starting At \$475.00
T-Plates
DEALERS WANTED

Highway Hydraulic Dump

BRI-MAR

5'x8', 3000# \$2,150
5'x8', 5000# \$2,495
6'x10', 7,000# \$3,195
6'x10', 10,000# \$3,495
7'x12', 10,000# \$3,995

FREE BATTERY

LOW PROFILE DUMP TRAILERS

BRI-MAR

6'x10' GVW low profile dump trailers w/ landscape gate

7,000# \$3,495
10,000# \$3,895

FREE BATTERY

Starting At \$3995 w/4 Adj Tail

GOOSENECK SIZES- 20'x8' 12,000# or 14,000# GVW, 24'x8' 14,000# GVW

Low Profile construction
16'x77" & 18'x77"
10,000 # GVW

DECK-OVER CONSTRUCTION
14'x7' With Tail, 3000# or 4000# GVW
16'x8' With Tail, 7000# GVW
20'x8' w/Tail 10,000# GVW **\$3,295**

KUTZ FARM EQUIPMENT, INC.
Pine Grove, PA (717) 345-4882 FAX 717-345-2884
8 AM-5 PM Monday To Friday
8 AM-12 Saturday Or By Appointment

USED TRU-HITCH!

GET MORE TRUCK FOR YOUR BUCK AT BERGEY'S!

ONLY MINUTES FROM EXIT 31 OF PA TURNPIKE I-476!

'93 Tru-Hitch, Model 250, Gross Lift Capacity 25,000 lbs, Trailering Capacity 80,000 lb G C W, Yellow Emergency Lights, Hook-up Lights, Honda Motor, Two Tool Boxes Attaches to Fifth Wheel & Converts It To An Underlift, Can Transport Any Truck As A Semi-Trailer, Optimum Weight Distribution

\$16,995
PRICED TO SELL!

**** CALL TOLL FREE 1-877-BERGEY3 ****

24 HR PARTS & SERVICE

Bergey's

EXCELLENCE SINCE 1924

Truck Center

SHOWROOM HRS
M-F 9A to 9P
Sat 9A to 4P
CLOSED SUNDAY

ROUTE 113, SOUDERTON, PA. • LOCAL CALL (215) 721-3400
- Just off Exit 31 of I-476, Rt. 63 West to Rt. 113 North.
- Souderton Exit of Route 309, Rt. 113 South, only 3 miles.

GMC COMMERCIAL VOLVO