

1976 Shoo horse trailer, 2-axle, 2 stalls, fair condition, \$500. 814/942-3821.

1982 MAC R Model TT, 5 speed, PF, Jake brake & tandem \$7500, 1976 Chevy C65 18' Omaha Grain box w/cattle racks, 5 + 2, new paint, inspected, ready for harvest \$7500 717-784-0111 evenings 717-784-6359.

1984 GMC 7000, 24' flatbed, overcab rack, 28,000 GVW, 8.2L diesel \$4495 717-523-8693.

1985 Toyota 4WD PU, BF Goodrich AT tires & wheels, good running gear, \$850. 717-367-7403

1986 C30 Chevy, flat dump, \$5995. York Co. 717-292-5696

1986 Chevy Scottsdale C30, 350 auto, PS, PB, AC, AM/FM cassette, dual wheels, long flatbed, \$3500. 814/942-3821.

1986 IH 52500 300HP Cummins 9spd. Road Ranger. 22' Flatbed, 32,000 GVW. Good Condition. \$13,500/obo.; 1998 Pequea 22' Flatbed Trailer, Torflex Axles, 14,000 GVW, Good Condition \$3,450/obo. NO SUNDAY CALLS (814)473-8231.

1986 Volvo (White) w/3406 Cat Engine. 285,000/Miles on Major Overhaul. Excellent Condition w/Wetline. **READY TO GO TO WORK!** \$6,000 (610)488-7400.

1987 Ford F-150, 4x4, 300 EFI, 4 spd, overhauled engine transmission, new clutch and radiator, body good shape, \$6,500. Evenings. 814-735-4554

1987 GM Chevy, 1/2 ton chassis, 8' rear body, 4.3 motor. Call 610-756-6071

1987 Volvo, 26' flatbed w/ power liftgate, 32,900 GVW, 6-speed, AC, AM/FM radio, good condition, \$9500. 717-484-0720

1989 Freightliner COE, 11.1L, 60 series Detroit diesel, 9-spd trans, 886,000 miles, good shape, \$4200. 610-286-7953

1989 GMC 1/2 ton pickup, runs good, needs paint, \$1800. 1986 Int. crew cab, C&C diesel, runs good, \$2500. 610-944-9871 evenings.

1989 GMC C70 427, 5-2 sp, tilt hood, 90% tires, 50K miles, 28K GVW, 22' van body, \$8800. 978/462-1000.

1989 Iveco Diesel Dump Truck w/Pintle Hook, Runs Good, Low Miles 23,000/GVW \$8,000 (717)244-1185.

1990 Ford, F-350 Cattle Truck. 7.3 Diesel, Auto Trans. 12' Eby Body, Deck Rail, Side/Rear Roll-up & Ramp. Box Mounted 8,000lb Winch. \$6,500/obo. (610)383-0591.

1991 Glick 16' stock trailer, includes extras, great condition, \$3500. 215-679-2868

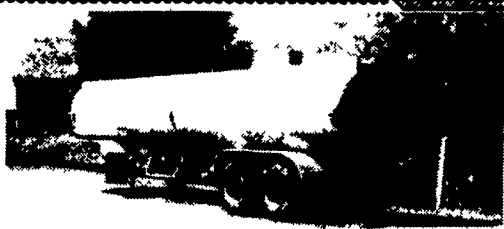
1992 Ford F450 Super Duty newer 429, auto, AC, 95K miles, 90% tires, 10' refrigerated body, Thermo King CB1 w/stand-by, nice condition, \$12,500 or \$3800 for body. 978/462-1000.

1992 SLE Dodge 250 Cummins diesel, tow hitch and brakes, \$9,000. (908)996-6565.

1996 Ford F350 flat bed, 4sp., good engine 11,000 GVW \$950 will sell hoist and bed for \$500 OBO Dau.Co. 717-365-3733.

1998 Ford L 9000, Tri-Axle Dump Truck, 300 Cummins, 8spd Lo-Lo Trans. 44,000lbs, Suspension, 15 1/2" Steel Body. Excellent Condition \$22,500. (717)739-4830.

26' Parker aluminum dump trailer, good condition, w/ tilt gate, coal chute, tarp, 10x20, \$5500 OBO. 717-683-6604



(2) 6800 Gal. Trailers, Aluminum 4" Discharge, Used for Water Storage, One Insulated \$3,000/Each 215-855-2946

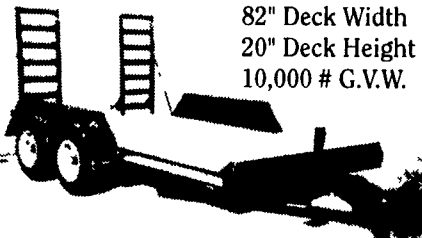


'96 GMC Top Kick 3126
Cat 250 hp 5+2 speed, 33,000 GVW, air brakes, trailer hook up, 10' dump w/tarp, high roof cab, 14,000 orig. miles.
717-354-3199

OVER 12 IN STOCK IN VARIOUS COLORS

BEST BUY ON THE MARKET

16 ft. \$2,595



82" Deck Width
20" Deck Height
10,000 # G.V.W.

6" Channel Tongue and Main Frame Choice of 2 5/16" Coupler or Pintle Ring 7000# Drop Leg Jack Treated Yellow Pine Floor Stake Pockets fits standard 2x4's heavy Tie Rail with Reflective Tape

(14" - \$2,495) (18" - \$2,760) (20" - \$2,960)
Gooseneck - Add \$300

Hostetler Truck Bodies & Trailers
Phone: 717-667-3921

LESHER Mack SALES & SERVICE

2700 Cumberland Sts. (Route 422 West) Lebanon, Pa. 17042

NEED A SLEEPER OR DAYCAB?
Sleeper boxes can be removed - plenty to choose from

1994's - 1995's
Nice - Clean Trucks

E7-350 RTLO14610B
10 Spds., DS404 - 3.90R
on Air, Steel Disc Hub Pilot,
295/75R 22.5 192 WB,
42" Highrise, 440,000
Miles & Under



1993 Mack MS250
190 HP, 6 Spd.,
228" WB, A/C, PS,
Cab & Chassis,
Rebuilt Trans. with
New Clutch

LEASE IT!

1999 Isuzu NPR 14 Ft. Supreme Van Body, Call For Details Ask For Leasing Dept.



717-273-4535

1988 Aluminum Body Delivery Van, Roll-Up Rear Door, Dual rear Wheels, 10,000 GVW, 350 Chevy Engine, Auto-Trans, Engine Has Blown Head Gasket, \$1,000 717/834-3148

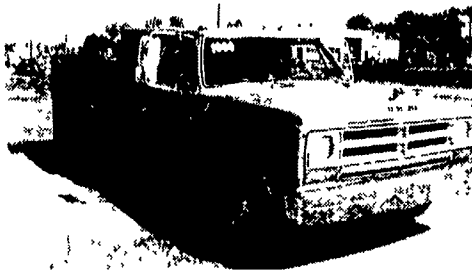
HARD TO FIND TRUCKS!

88 Chevy C-30 Dump Truck



350 V8, 4 Speed, 10,000 GVW, 42,000 Miles **\$10,990**

89 Dodge D350 8' Dump Truck



360 V8, 4 Speed 16,000 GVW, 72,000 Miles **\$10,500**

"THE TRUCK PEOPLE"

Over 30 Pre-owned Trucks In Stock!

BOYER MOTOR CO.

1065 S. State Street Ephrata, PA 17522
717-738-1885 1-800-786-1835



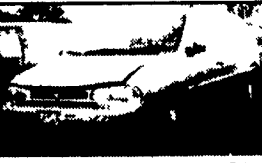
1995 Ford Windstar GL
3.8L, V6, AT, AC, Loaded, 72,379 mi., Needs Front, **\$3,900**



1995 Toyota P/U, 4x4
60,117 mi. Rolled. Runs & Drives **\$4,500**



1997 Ford Ranger Super Cab
4x4, 4.0L, V6, AT, AC, Cruise, Tilt, Cass. 28,448 mi. Rolled, Runs. **\$5,500**



1995 Ford Windstar GL
3.8L V6 AT, AC, Loaded. 58,029 Miles, Hit in rear and needs minor front end repair. **\$4,900**

Other Rebuildables

1998 Chrysler Town & Country Minivan, 3.8L, V6, AT, AC, Loaded, 949 miles, hit low in front, \$6,900

1994 Ford Aerostar Extended, 3.0L, V6, AT, AC, Most Options, 69,319 mi., hit in left rear and has right side swiped. Some parts available. \$2,300

1992 Chevy Astro EXT, 4.3L, V6, AT, AC, Most Options, 121,770 Mi., Needs Front, \$2,900

1992 Ford Ranger XLT, 3.0L, V6, 5 Spd., AC, 74,459 Mi., Needs Front, \$1,750

1990 Dodge Grand Caravan LE, 3.3L, V6, AT, AC, Loaded, 125,565, needs cosmetic work, runs & drives \$1,500

1990 Dodge Grand Caravan LE, 3.3L, V6, AT, AC, Loaded, 80,549 Mi., Hit in left rear, some parts available \$1,350

Road Ready Vehicles

1992 Dodge V-150 van, 3.9L, V6, AT, AC, PW, PL, PM, Tilt, Cruise, Cassette, 9-passenger, excel cond \$6,300

1984 Chrysler LeBaron, 2.2 AT, AC, Brand New Engine Put in 8,000 Mi Ago, Runs Excellent, \$1,595 OBO

1987 Ford F-350 Utility Bed 460 Engine, 4 Spd Trans Excellent Condition Ready For Work \$6,500 OBO.

1979 Mack U-Model Single Axle Dump Truck, 237 Maxidyne, 5 Spd Almost New Tires New Floor In Bed New Tailgate New Paint Excellent Condition Ready to Run for a Long Time \$6,900 OBO

John E. Kreider 717-361-9296

Sheets TRUCK CENTER, INC.

Hanover, PA
Route 94 - 5 Mile
South Off Rt. 30 & 94
Intersection
717-637-2108
PA Toll Free
1-800-762-1503

York, PA
(Route 462)
2818 W. Market St.
717-792-2277
PA Toll Free
1-800-475-3900

95 VOLVO WIA 64TTES



430/470 Detroit Diesel, 10 Speed Trans., Air Ride Susp, Jake Brake, Alu. Wheels, LPP 22.5 Rubber, 265,000 Miles, Self Contain Heater/AC/Generator

4 ROLLBACKS IN STOCK

98 INTERNATIONAL 4700 ROLLBACK



23,440 GVW DT444E 190 HP, 4 Speed Allison Auto, AC, 19' Danco Steel Body w/Wheel Lift **\$41,100**

98 INTERNATIONAL 4700 ROLLBACK



25,200 GVW DT466 190 HP, 7 Speed Trans., AC, 22' Danco Steel Body w/Wheel Lift **\$45,500**

BOWERS USED CARS INC.
Route 30 West of Abbottstown, PA
7015 York Rd. 717-624-7072



93 FORD F250 XL 4X4
8600 GVW Meyer Power Angle Snow Plow 351 V-8 Auto PS PB AC 99,000 Miles **\$11,900**



93 FORD PICKUP F150 EX. CAB, 4x4 351 V8 Auto Loaded 12 Mo/12,000 Miles Warranty **\$11,900**



88 GMC 3500 DUALY 454, V-8 Auto PS PB PW&L AC **\$8,995**



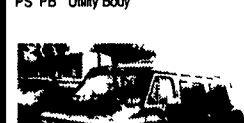
87 FORD F600 ROLLBACK 6 Cyl Turbo Diesel 5+2 Speed One Owner 73,000 Miles **\$23,000**



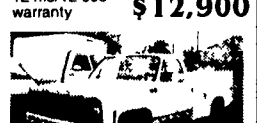
92 Dodge Ram 350 Dually V8 Auto PS PB Utility Body **\$10,900**



95 CHEVY S-10 BLAZER, 4 dr loaded 12 mo/12,000 warranty **\$12,900**



89 CHEVY 20 SERIES Conversion Van Loaded **\$5,990**



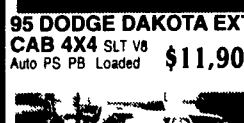
80 CHEVY CUSTOM DELUXE 20 SERIES V8 Auto PS PB **\$2,495**



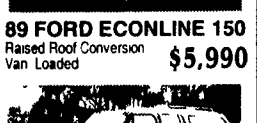
95 DODGE DAKOTA EXT CAB 4X4 SLT V8 Auto PS PB Loaded **\$11,900**



89 FORD ECONLINE 150 Raised Roof Conversion Van Loaded **\$5,990**



94 CHEVY S-10 PICK-UP, V-6 Auto PS PB AC **\$6,995**



86 CHEVY SUBURBAN SILVERADO 4x4 New 358 V8 Eng Loaded Barn Doors **\$6,595**