

## Pa. Weekly Livestock Summary

SEPTEMBER 11, 1998

### 8 LIVESTOCK AUCTIONS

**CATTLE** 3602 Compared with 4681 head last week and 6162 head a year ago Compared with last Friday's summary slaughter steers mostly steady, sl cows and bulls about steady, sl heifers steady to weak

**SLAUGHTER STEERS** few High Choice & Prime 2-4 60 00-63 75, Choice 1-3 56 00-61 50, Select and Low Choice 2-3 55 00-59 50 Select 1-3 52 00 56 00, few Standard 1-2 42 00-47 50

**HOLSTEINS** few High Choice and Prime 52 50-53 75, Choice 2-3 49 75-53 50 Select 1-2 46 00-50 75, few Standard 1-2 43 50-46 75

**HEIFERS** few Choice 2-4 54 00-59 00, few Select 1-3 51 00-56 00, few Standard 1-2 44 50-50 00

**COWS** Breakers 75-80% lean 35 25-41 75 Boners 80-85% lean 32 00-39 00 Lean 85-90% lean 27 00-34 00, few to 25 00 Shells down to 19 50

**BULLS** Yield Grade 1 1000-2400 lbs 44 00-53 50, Yield Grade 2 900-2000 lbs 41 00-45 25

**FEEDER CATTLE STEERS** few Large 2 540 1000 lbs 40 00-48 50, few Medium 1-2 450-800 lbs 51 00-61 50, **HEIFERS** few Medium and Large 1 350-600 lbs 50 00-66 50, few Medium 1-2 560-950 lbs 36 00-48 50, **BULLS** few Medium and Large 1 300-500 lbs 64 00-80 00 few Medium 1 300-670 lbs 41 00-45 50

**CALVES** 2119 Compared with 3492 head last week and 3231 head a year ago

**VEALERS** steady few Choice 145-250 lbs 75 00 88 00, few Good 135-150 lbs 35 00-65 00, Standard and Good 70 115 lbs 20 00-30 00, Utility 55-100 lbs 10 00-22 00, few to 5 00

**FARM CALVES** Holstein bull calves steady to 5 00 higher Holstein heifers steady to weak No 1 Holstein bulls 90-125 lbs 55 00-97 00 No 2 85-125 lbs 30 00 60 00, No 1 Holstein heifers 80-125 lbs 180 00-224 00 few No 2 75-

120 lbs 60 00-130 00

**HOGS** 456 Compared with 2040 head last week and 3161 head a year ago Barrows and gilts uneven, mostly steady to 3 00 lower, sows 3 00 to 5 00 lower **BARROWS AND GILTS** 49-54% lean 220-265 lbs 27 50-28 00, 45-50% 210-280 lbs 24 00-26 50, few 40-45% 220-320 lbs 18 00-21 00 **SOWS** US 1-3 300-500 lbs 12 00-14 50 500-700 lbs 15 00-17 00 **BOARS** few 5 00 9 50

**FEEDER PIGS** 240 Compared with 597 head last week and 234 head a year ago Feeder pigs Few US 1-3 25 45 lbs 8 00-18 00, 40-75 lbs 15 00-25 00 --- per head

**SHEEP** 1250 Compared with 2310 head last week and 2093 head a year ago Slaughter lambs steady to weak **SLAUGHTER LAMBS** High Choice and Prime 50-80 lbs 70 00-86 00, Choice 50-80 lbs 70 00-86 00, 75-120 lbs 60 00-80 00, 80-85 lbs 73 00-70 00 **SLAUGHTER SHEEP** 20 00-46 00

**TWO GRADED FEEDER PIG SALES** 1417 Compared 1458 last week and 1371 head a year ago Feeder pigs 5 00 to 20 00 lower US 1-2 30-40 lbs 25 00-57 50, 40-50 lbs 30 00-42 50, 50-60 lbs 35 00-42 00, 60-70 lbs 35 00-37 00, few to 25 00, Slaughter 25-30 lbs 30 00-36 00, 30-40 lbs 26 00-33 00, few to 90 00, 40 70 lbs 27 00-52 00 --- per hundred weight

## Eighty-Four Livestock Sales, Inc.

EIGHTY-FOUR, PA  
SEPTEMBER 14, 1998

**CATTLE** 161 [PDA]

**SLAUGHTER STEERS** few Select 1-3 50 00-50 75, Standard 1-2 42 50-48 50

**HEIFERS** Standard 1-2 40 00 47 00 **COWS** Breakers 75-80% lean 37 00-37 50, Yield Grade 4 5 30 75-34 75, Boners 80-85% lean 32 00-35 50 Lean 85-90% lean 25 00-32 25 Shells 18 00-24 00

**BULLS** Yield Grade 1 1020-1890 lbs 43 50-47 50, Yield Grade 2 1050 1999 lbs 36 50-44 00, few to 34 00

**FEEDER CATTLE STEERS** Medium and Large 1 365-500 lbs 60 00-62 00, 510-865 lbs 57 50-63 00, Medium and Large 2 325-500 lbs 45 50-57 00, 530-990 lbs

41 00-55 50, **HEIFERS** Medium and Large 1 340-450 lbs 55 00-66 00, Medium and Large 2 300-500 lbs 47 00-58 00, 515-885 lbs 44 00-56 00, **BULLS** Medium and Large 1 325-650 lbs 54 00-64 00, Medium and Large 2 325-475 lbs 53 50-55 00 500-895 lbs, 43 00-54 00

**CALVES** 193 [All calves sold per cwt]

**VEALERS** couple Choice 130-210 lbs 72 50-78 00, few Good 130-140 lbs 50 00-62 50, Standard and Good 90-115 lbs 28 00-37 50, 70 85 lbs 22 00 30 00, Utility 50-75 lbs 10 00-22 00

**FARM CALVES** No 1 Holstein bulls 90-125 lbs 65 00-87 50 mostly 72 50-80 00, No 2 85-120 lbs 40 00-67 50 No 1 Holstein heifers 85-110 lbs 130 00-210 00, few No 2 75-90 lbs 40 00-100 00 Beef type bulls and heifers 85 90 lbs 50 00 92 50, 180-290 lbs 52 00-65 00

**HOGS** 23 **BARROWS AND GILTS** 49-54% lean 230 260 lbs 32 50-35 00 45-50% lean 235-290 lbs 26 50-31 00 one 33 50

**SOWS** couple US 1-3 360-630 lbs 21 00-21 50

**BOARS** few 175 & 215 lbs 15 50

**FEEDER PIGS** 0 **NO MARKET TEST** **SHEEP** 203 **SLAUGHTER LAMBS** High Choice and Prime 105 125 lbs 65 00-75 00, Choice 40-55 lbs 85 00 94 00, 60-75 lbs 68 50-75 50, one 88 00, 80 100 lbs 65 00-78 00, Good and Choice 95 120 lbs 50 00-61 00

Lancaster Farming, Saturday, September 19, 1998-A7

**FEEDER LAMBS** Good and Choice 65-80 lbs 38 00-50 00

**SLAUGHTER SHEEP** 28 00-44 00

**GOATS** 20 Couple Large Billies 70 00 & 76 00, Medium 42 00-45 00 Large Nannies 42 50-66 00, Medium 32 00-39 00 Large Kids 20 00-35 00 per head

## Middleburg Livestock Auction

MIDDLEBURG, PA

SEPTEMBER 15, 1998

**CATTLE** 348 [PDA] sl steers uneven steady to strong

**SLAUGHTER STEERS** High Choice and Prime 2-4 1140-1400 lbs 62 00 63 75, Choice

2 3 1060-1430 lbs 58 00-61 25, Select 1-3 54 00-59 75, few Standard 1-2 41 50-51 75

**HOLSTEINS STEERS** High Choice and Prime 2-3 1100-1525 lbs 53 25-56 00, Choice 2-3 1105-1540 lbs 48 00-53 25, Select 1-2 46 50 50 50, few Standard 1-2 41 50-46 25

**HEIFERS** Choice 1120-1400 lbs 58 00-61 50, Select 1-3 54 00-58 50, Standard 1-2 43 25-51 75

**COWS** Breakers 75-80% lean 36 25 40 25, low dressing 34 00-35 75 Boners 80-85% lean 31 00-35 75, Lean 85-90% lean 26 50-33 00 Shells down to 22 00

**BULLS** few Yield Grade 1 1185-2075 lbs 44 00-50 25, Yield Grade 2 1100-1895 lbs 38 00 42 25

**FEEDER CATTLE STEERS** Medium and Large 1 245-455 lbs 58 50-68 00 500-650 lbs 54 00 64 00 730-1025 lbs 47 50-59 00, Medium and Large 2 330-765 lbs 40 00-48 00 **HEIFERS** Medium and Large 1 200-355 lbs 54 00-63 00, 445 555 lbs 55 50-58 50, Me-

dium and Large 2 640-830 lbs 30 50-40 50, **BULLS** few Medium and Large 1 400-440 lbs 51 00-61 00, Medium and Large 2 335-710 lbs 38 00-47 00

**CALVES** 276 **VEALERS** Good and Choice 130-200 lbs 60 00-80 00, Standard and Good 75-105 lbs 22 00-28 00, Utility 60-80 lbs 10 00-21 00 **FARM CALVES** No 1 Holstein bulls 90-125 lbs 50 00-80 00 bulks of sales 60 00-77 00, No 2 90-105 lbs 28 00-55 00 No 1 Holstein heifers 80-115 lbs 120 00-197 00, No 2 75-100 lbs 40 00-85 00 Beef type bulls and heifers 75-120 lbs 52 00-100 00

**HOGS** 133 (9/14 & 15/98) Bulk of supply sold on Monday and supplied by the auction

**BARROWS AND GILTS** 49-54% lean 220 265 lbs 27 75-28 50, 45-50% lean 225-270

lbs 26 75-27 50, one lot 40-45% lean 290 lbs 26 50 **SOWS** US 1-3 270-455 lbs 13 75 18 00, one lot 22 00 few 515-690 lbs 14 50 17 50

**FEEDER PIGS** 130 US 1 3 35 55 lbs 8 00 15 00, 60 75 lbs 12 00 18 00 per head

**SHEEP** 34 **SLAUGHTER LAMBS** few High Choice and Prime 50 lbs 100 00, Choice 55-80 lbs 69 00-77 00 few 90-110 lbs 70 00-75 00 **SLAUGHTER SHEEP** one Yearlings 52 00

**GOATS** 28 Few Large Billies 52 00 62 00, Medium 41 00-58 00 few Large Nannies 35 00-47 00 Large Kids 24 00-32 00, Small 16 00-20 00 per head

## EXTENDED PARTS DEPT. HOURS EFFECTIVE SEPT. 1 THRU OCT. 30

To Better Serve You During  
The Busy Harvest Season

MON. ★ TUES. ★ THURS. ★ FRI. 7:00 AM-8:00 PM  
WED. 7:00 AM - 5:00 PM; SAT. 7:00 AM - 12 Noon

**BINKLEY-HURST  
BROS. INC.**

Fax 717-626-0996

133 Rothsville Station Rd.  
P.O. Box 0395, Lititz, PA 17543-0395  
(717) 626-4705 1-800-414-4705

Farm Plan  
A Service of FPC Financial

Master Card

DISCOVER

**DIETRICH'S  
MILK  
PRODUCTS  
INC.**

*Ready for  
Tomorrow*

## A LEGACY OF PRIDE

From a proud neighborhood dairy in the 1910's to a modern manufacturing company of the 1990's, the Dietrich family-owned business continues to move forward. With the dedication of three generations and a heritage rich in experience and innovation, Dietrich's Milk Products faces the future with confidence.

As in the past, our future success depends upon fine quality products made from quality milk.

We need more good dairy farm families from your area to assure a continued bright future together.

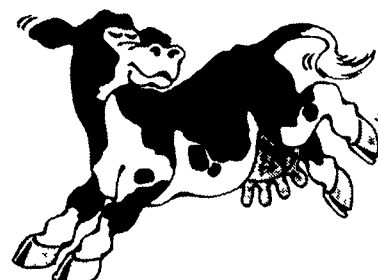
## OUR BENEFITS

- Strong Market Premiums
- Extra Pay For High Solids Milk
- A Field Staff That Knows The "Cow Business" And Is Here To Help You!
- High Quality Milk Premiums
- Sensible Hauling Rates
- A Local, Family-owned Dairy - Large enough to Serve your Milk Marketing Needs - Small enough to Know You!

SERVING LANCASTER, CHESTER, BERKS COUNTIES  
AND THE SURROUNDING AREA

**dmp DIETRICH'S  
MILK PRODUCTS, INC.**  
100 McKinley Avenue  
Reading, PA 19605-2117

READING OFFICE:  
800-526-6455  
DANIEL VOSBURG:  
717-354-5562  
JEFF JOHNS:  
610-323-4630



**Martin's**  
AG. SERVICE

New Holland, PA  
(717) 354-4996 (717) 445-7561



Hi Mag (Ag Lime Spreading) Hi-Cal  
Also in bags, pulverized, pelletized  
and feed grade

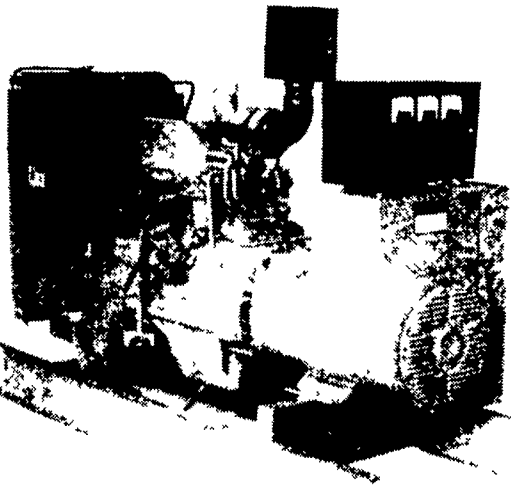
**Float - a - Cow**  
**LEE-MAR FARM**  
2724 Conestoga Creek Rd  
Morgantown PA



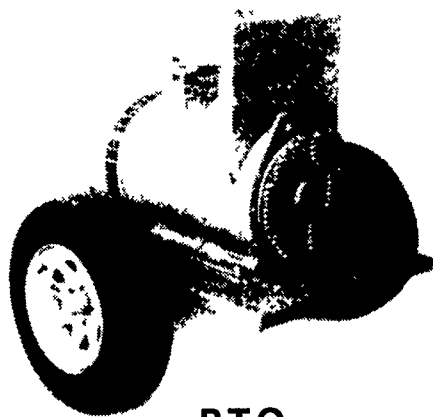
610-286-9052  
Sales & Rentals

Give Your Down Cow Her Best Chance

## Agricultural Generators



Automatic  
L.P. Gas, Diesel, Natural  
Gas Generators  
5 to 2,000 KW



P.T.O.  
Generators  
25 to 100 KW

Service - Rental - New - Used

**PENN POWER  
SYSTEMS**

Power Generation Systems Specialists

Call Leonard Martin

717-273-4544  
Fax 717-273-5186