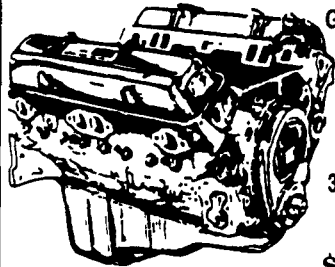


JONES



We want your business.



GM GOODWRENCH
350 V8 1973-85
Part Number
10067353
New Engine - Not
Rebuilt
36 Month or 50,000
Mile
Warranty.

New Engine - No Core Fee **\$1199⁰⁰**

**WE'LL
MATCH ANY
COMPETITOR'S
PRICE!**

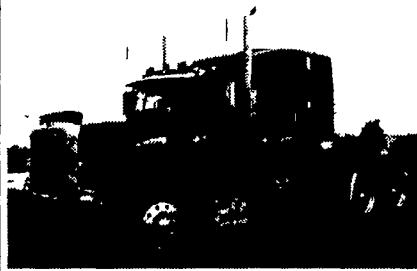
**6.5L
GOODWRENCH
DIESELS
From
\$3,175**

Call 394-0711 for prices on other New or
Remanufactured
Goodwrench Engines. 2.5 Liter thru
454 cid. Gas and Diesel

Chevrolet - Pontiac - Olds - Buick - Cadillac - GMC

JONES GM PARTS CENTER

1335 Manheim Pike, Lancaster, PA 17604
Easily Located on Rt. 72 Just off of Rts. 283 & 30
Hours: Mon-Fri 7:30 a.m. - 9 p.m. Sat 7:30-3
(717) 394-0711



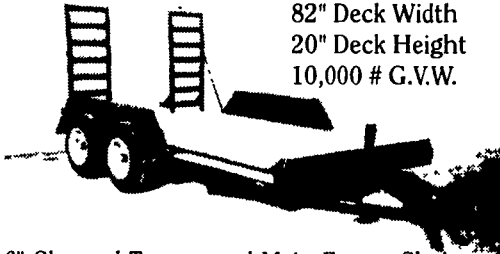
1994 Peterbilt 377SBA, 425 CAT, 10 spd, 230" WB, 3 55 RRS, 490,000 miles, \$45,000 OBO, work available to qualified buyer. 717-354-5583 leave message

**OVER 12 IN STOCK
IN VARIOUS COLORS**

BEST BUY ON THE MARKET

16 ft. \$2,595

82" Deck Width
20" Deck Height
10,000 # G.V.W.



6" Channel Tongue and Main Frame Choice of
2 5/16" Coupler or Pintle Ring 7000# Drop
Leg Jack Treated Yellow Pine Floor Stake
Pockets fits standard 2x4's heavy Tie Rail with
Reflective Tape

(14" - \$2,495) (18" - \$2,760) (20" - \$2,960)
Gooseneck - Add \$300

**Hostetler Truck Bodies & Trailers
Phone: 717-667-3921**

USED TRUCKS



95 Chevy 2500 Cheyenne 350 V8 AT A/C AM/FM Cassette
Cruise Tilt, 8600 GVW 4 10 Ltd Slip Rear
PA 1 Owner Truck, 15,000 Mi Lt Blue
\$15,900



97 Dodge 2500 SLT 4x4 5.9 Cummins Diesel AT A/C
Loaded 8800 GVW 3.5 Ltd Slip Rear PA 1 Owner
12,000 Mi Dark Green
\$26,500



97 Ford F 350, XL 4x4 7.3 Powerstroke Diesel, 5 Speed
AC AM FM, Sliding Rear Window Dual Tanks 9000
GVW 3.55 Rear Dk Green 32,000 Miles
\$24,700



96 Chevrolet 2500 Silverado Fxt Cab 4x4 350 Vortec Eng
At AC Loaded 8600 GVW 4 10 Limited Slip Rear Dk
Blue 34,000 Miles
\$21,900



96 Chev Cheyenne 2500, Ext Cab 4x4, 6.5 Turbo Diesel
5 Spd, AC AM-FM, Sliding Rear Window 8600 GVW
3 73 Limited Slip Rear, 50,000 Miles Teal Green
\$21,700



93 Chevy K3500 Cheyenne Crew Cab Dually 454FI
Engine 5 Sp AM/FM A/C 10,000 GVW 4 10 rear Red
& Silver 61,000 Mi
\$17,500

MARTIN'S AUTO SALES

1025 W. Main St. New Holland, PA 17557
(717) 656-6621

JONES BEST BUY 4X4'S TRUCKS

**Largest Stocking
& Selling Extended
Cab GMC Dealer
in 7 States**

**PONTIAC • HONDA
GMC TRUCK**
1335 Manheim Pike, Lancaster

Prices based on straight sale, Tax & Tags
extra. Trades accepted at actual cash
value. Must present this ad at time of
purchase for sale price.

JONES
717-394-0711



**'97 DODGE XCAB
4X4 SLT**
AT, AC, V8, 14,000 Miles,
#8125 Was \$25,900
SALE \$24,000



**'97 CHEV
SUBURBAN 4x4**
Diesel, AT, AC, 3/4 Silverado,
18K Miles
#8087 Was \$37,400
SALE \$34,400



**'95 CHEV
SUBURBAN 4x4**
AT, AC, Silverado, 350 3/4
#8099 Was \$22,300
SALE \$19,900



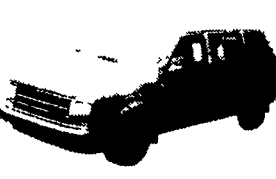
**'93 GMC
JIMMY 4X4**
AT, AC, V6, SLS,
#8120, Was \$12,700
SALE \$9,750



**'94 GMC
YUKON 4x4**
AT, AC, 350, SLE
#8083 Was \$18,880
SALE \$16,475



**'95 GMC G25
CARGO VAN**
AT, AC, 29,000 Miles,
#8130 Was \$17,500
SALE \$15,988



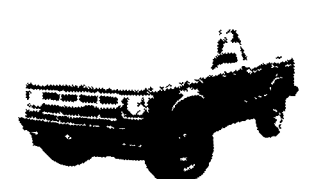
**'90 PLYMOUTH
VOYAGER**
AT, AC, 7 Pass, 75,000 Miles
#8058 Was \$6,900
SALE \$4,750



**'89 CHEV
SUBURBAN 4x4**
AT, AC, 350, Silverado
#8050, Was \$10,900
SALE \$8,900



**'96 PLYMOUTH
VOYAGER**
AT, AC, 35,000 Miles
#8115 Was \$15,995
SALE \$14,500



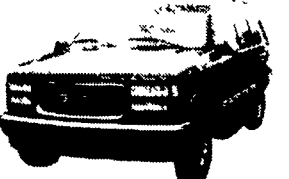
**'94 CHEV
S10 BLAZER 4x4**
AT, AC, V6, Tahoe, Very Clean!
#8061 Was \$15,900
SALE \$13,800



**'97 CHEVY
TAHOE 4X4**
2 Door, LT, AC, AT, 21,000 Miles,
#8129 Was \$29,995
SALE \$28,000



**'95 DODGE
CARAVAN**
AT, AC, 7 Pass.,
#8042, Was \$11,400
SALE \$9,900



**'97 GMC YUKON
4X4 4 DOOR SLE**
AT, AC, 19,000 Miles
#8128 Was \$30,500
SALE \$28,950



**'95 GMC
SUBURBAN**
Conversion 4x4, AT, AC,
Silverado, V8, TV, VCR
#8038 Was \$28,700
SALE \$26,350



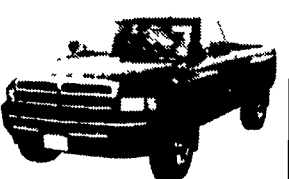
**'91 CHEVY
SUBURBAN 4X4
SILVERADO**
V8, AT, AC, #8077 Was \$12,000
SALE \$10,995



**'97 CHEV
ASTRO AWD**
AT, AC, V6, 7 Pass.,
#8104 Was \$18,900
SALE \$17,000



**'95 GMC
JIMMY 4X4**
AT, AC, V6, SLS
#8117, WAS \$17,700
SALE \$15,400



**'95 DODGE
150 4X4**
AT, AC, V8, SLT
#8078, WAS \$18,900
SALE \$17,388



**'89 CHEVY S10
BLAZER 4X4**
5 Spd, V6, AC
#8122 Was \$6,995
SALE \$4,995



**'97 CHEVY S10
XCAB 4X4**
AT, AC, V6, 3rd Door,
#8102, Was \$18,885
SALE \$17,350