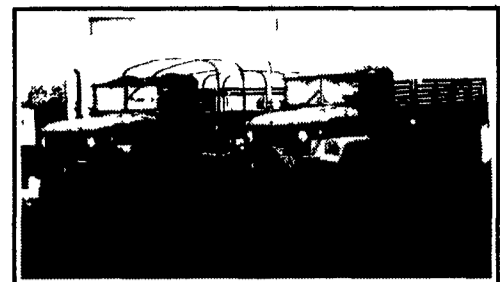


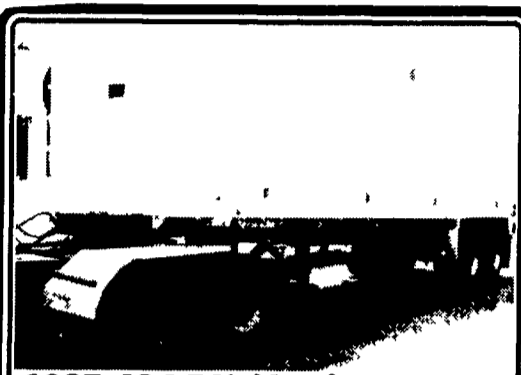
'88 Ford Ranger XLT, long bed, 4 cylinder, 5 spd, PS, PB, air, AM-FM cassette, new radials, burgundy w/ matching fiberglass cap, 57,000 miles, excellent condition, \$3,975. 717-733-2873

E-TOWN DODGE

'94 Chevy K2500 Super Cab 4x4 Silverado
 (47) New quad cabs available.
 (8) Used New Style Pickups mostly SLT's
 (12) 1998 24 Valve New Style Diesel Quad & Reg. Cab In Stock
 '97 Tahoe LT w/Leather very nice
 (15) Durangos in stock
 ASK FOR MILTON HESS
 Certified Truck Specialist
 717-367-6644
 717-653-6667
 Elizabethtown, PA



All Wheel Drive, M35A2 Cargo Trucks, turbo diesel engines, excellent running condition, low miles, some with winches, excellent tires, great for logging, farming, collectors, convert to log loader, tanker or dump, priced to sell, \$3,500 and up.
 Philadelphia, PA • (215) 598-8227



1987 J&J 34' Aluminum Dump Trailer, 35' Steel Frame, 54" Sides, Roll-Over Tarp, Floor Liner
\$19,500
 Curry Supply Co., Curryville, PA
 1-800-345-2829

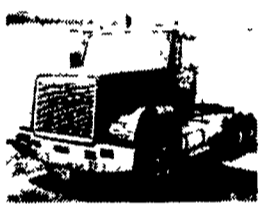
'88 Ford F-700
 Cab & Chassis, 6.6L Diesel, 5+2 Trans., PTO and Pump, 22,800 GVW, Good Condition **\$8,500**
610/383-7710

1972 Binkley 48' Drop Deck Trailer, Excellent Condition, 10.5' Upper Deck, 37.5' Lower Deck. Clean, Well Maintained Trailer Holds approx 685 bales of Hay/Straw
Asking \$5,900
410-635-3179

1981 Freightliner Conv. Double Bunk 400 Cummins, 15 spd. Overdrive, 411 Rears, 230 in. Wheel Base \$6,000 OBO
610/927-2118

88 IH 10' Dump
 DT 466 5+2 Trans., 32,000 GVW Pintel Hitch, Good Condition
\$16,500
610/383-7710

TANDEM AXLE TRACTORS WITH WET LINES



'86 Freightliner, 350 Cummins, 8 Spd w/lo & Lo Lo 38,000 Lb Rears, 12000 Lb Front 208" WB, Hendrickson Suspension - PTO & Wet Line - Jake Brake - Cold A/C Lots Of Extras - One Owner, Fleet Maintained Ready to Roll

'86 Mack R686ST - Mack 350, 9 Spd, Mack Spring Suspension, 12,000 lb Fronts, 38,000 Rears, PTO & WETLINE, 206" WB, Clean, Road Ready, Fleet Maintained, 1 Owner Tractors

\$14,500

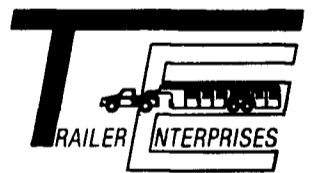
\$17,000

Lester R. Summers Trucking

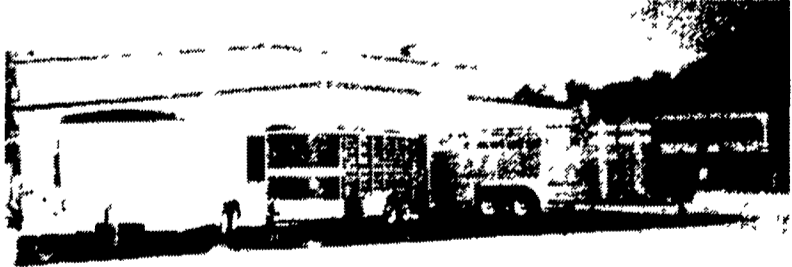
Ephrata, PA
 Call David Yerger 717/733-6556

TOOL SHED OF AMERICA SAND BLASTERS & BLAST CABINETS
 4294 E. HARRISBURG PIKE DEPARTMENT LF CATALOG MIDDLETOWN, PA 17057 (717) 944-0318 Route 230 Between Elizabethtown & Middletown
NEW GAS TANKS, RADIATORS, TOOLS AND EQUIPMENT
SAVE \$\$\$
FREE CATALOG CALL OR WRITE NOW!!
AUTOBODY PARTS, PAINTS & SUPPLIES
BUILD OR REPAIR YOUR TRAILER. WE HAVE PARTS.
MOST CLASS III HITCHES \$79⁹⁹ to \$89⁹⁹
USED 4x4's Pickup's, Bronco's & Blazer - Call For Our Low Prices
NEW UTILITY TRAILERS 3,000 GVW, Extra Heavy Frames w/Treated Lumber Deck Lights Chains Etc Included!!!
 5'x10' Deck.....\$750
 6'4"x12' Deck.....\$875
 Add-On Landscape Ramp/Gate.....\$145
WE BUILD OUR OWN TRAILERS
"NEW" 16' Deck Car Hauler
 Has Two 24" Wide Diamond Steel Runners Tube Steel Frame 4-Wheel Brakes Safety Breakaway Kit & Full Lighting Beavertail & Ramps Removable Left Fender & More For **\$1,799**
 Hours: Tues.-Fri. 9 AM - 6 PM Saturday 9 AM - 2 PM Closed: Sunday & Monday

"Revvin' to take care of ALL your trailer needs."



HAS BUILT A REPUTATION



United Expressline 8x16 Cargo Bison 616HPT **EBY** Aluminum 7x20 Gooseneck

NEW & USED: STOCK - HORSE - CARGO - INDUSTRIAL - UTILITY - CAR HAULERS

Trailer Enterprises is here to serve you. We are a full service facility providing YOU with the very best service available in the industry!

TRAILER ENTERPRISES, INC.
 13121 MAUGANSVILLE ROAD
 HAGERSTOWN, MD 21740

Just give us a call at (301) 791-5343.

Hours: 8AM-5PM Monday-Friday
 9AM-12 Noon - Saturday

HUNTER KEYSTONE PETERBILT LP
 1467 Manheim Pike • Lancaster, PA 17604
 717 299-6630 • 800 243-2458



80 IHC 2275S Tractor, Cummins 350, 10-Speed, 148" WB, Spring Suspension, 11/22 5 Rubber, Very Clean



93 Mack CH613; E7-350 Eng., 9 Speed, 4:11 Rears, 196" Wheel Base, 12/38 Axles, 36" Sleeper, Air Susps.



1993 Mack RD690, 216" W.B.; EM7 300; Mack 7 Spd.; D/F; 44K Rears; Less Than 200,000 Miles.



87 Kenworth T600, Cumm-400, 9 Spd. Trans., 4.44 Ratio, 210" WB, Air Ride