

# TIMBERLINE

## POLE BUILDINGS

Since 1968

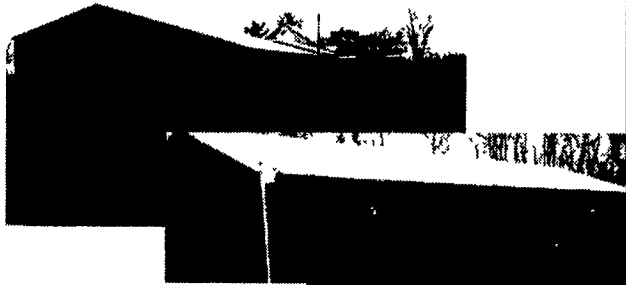
Garages - Workshops - Pavilions  
Equipment Storage - Horse Barns  
Commercial Buildings

FREE ESTIMATES

800/842-0276



### POLE BUILDINGS



We specialize in  
• Horse Barns & Arenas  
• Garages  
• Equipment Sheds

#### TALBOTVILLE CONSTRUCTION

RD #1, Box 679, Honey Brook, PA 19344  
610-273-2870

### S.M.S BUILDERS

762 Maple Grove Road • New Holland, PA 17557  
717-354-8755

Riding Arenas

Storage Sheds

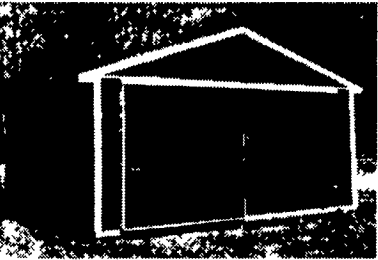


Call For Free Estimates  
Financing Available

**We Build The Size For Your Needs**

Horse Barns

Stall Kits



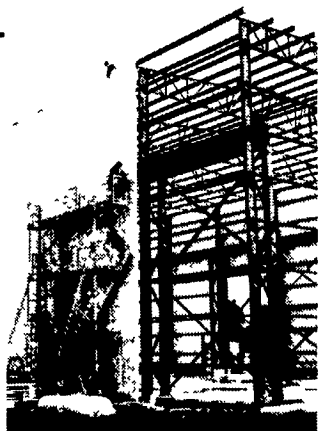
609-702-0550

Fax: 609-702-0440

FALL BLOWOUT SALE  
CALL NOW!

### Steel Top®

- ✓ PRE-ENGINEERED BUILDINGS
- ✓ DESIGN BUILT PROJECTS
- ✓ STRUCTURAL STEEL
- ✓ SELF-STORAGE FACILITIES
- ✓ DROP SHIP ONLY



Agricultural, Industrial, or Commercial, Steel Top® has the product.  
CALL NOW FOR FREE CONSULTATIONS AND QUOTATIONS!

Tel: 609-702-0550 Fax: 609-702-0440  
223 Warner Rd • Columbus, NJ 08022

Steel Top® is a registered trade mark of Steel Top Building Systems, Inc.

## W&J WALTER & JACKSON, INC.

"SERVING THE  
AREA'S BUILDING  
NEEDS SINCE 1872"

Complete Source of Building Materials for Agricultural, Residential & Commercial



Materials To Build A  
32 x 24

### HORSE BARN

\$7995<sup>00</sup> +Tax

Cash & Carry  
Special Good through 9/30/98

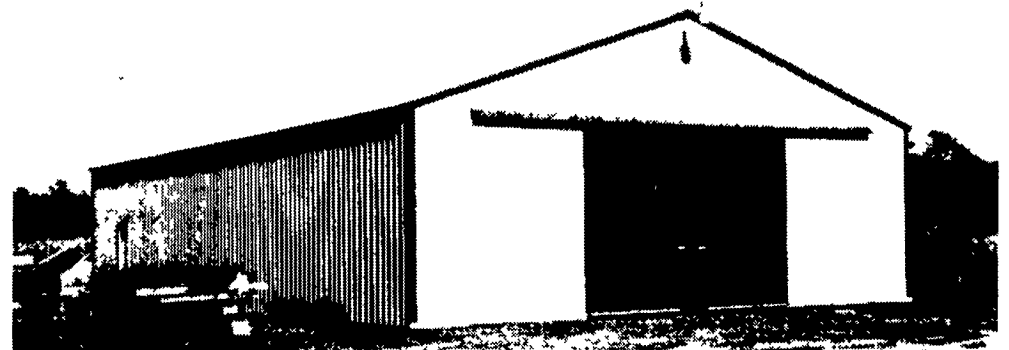
QUARRYVILLE (18 N. Hess St.) - 717-786-2171  
CHRISTIANA (44 E. Gay St.) - 610-593-5195  
HINKLETOWN (Farmersville Rd.) - 717-354-4911

FREE ESTIMATES - WE DELIVER  
Other Sizes and Options Available

All locations  
Open Mon-Fri 6:30-5  
Sat 6:30-12 noon

## PPB, Inc.

Pioneer Pole Buildings, Inc.  
Pottsville, PA 888-448-2505 Toll Free



24X40X10	1 Entry Door 2 9w8h Overhead Doors	\$7,600.00
	Special Erected Price	
30X40X10	1 Entry Door 1 10w10h Sliding Door	\$7,600.00
	Galvalume Roof	
	Special Erected Price	
40X80X14	1 Entry Door 1 14w14h Sliding Door	\$18,900.00
	Choice of solid or laminated posts	
	Special Erected Price	



## GLENWOOD METALS LLC

### CUSTOM CUT METAL ROOFING & SIDING

29 gauge -- 15 colors Painted, Galvanize & Galvalume

26 gauge commercial -- 12 colors Painted & Galvalume

26 Ga. & 24 Ga. Standing Seam Panels

.018 Mill Finish & White Alum.

trims - screws - nails to match colors

#### STOCK REDUCTION SPECIALS

Pcs.	Length	Description	Price
20	8'	Dark Red	\$8.40
47	10'	Dark Red	10.50
36	10'6"	Lt. Stone	9.50
40	11'-19"	Lt. Stone	.95 per ft.
34	8'	Blue	8.40
8	7'4"	Blue	7.70
25	8'	Forrest Green	8.40
12	19'6"	Forrest Green	20.50
13	13'7"	Forrest Green	14.25
18	8'	Brown	8.40
10	9'	Brown	9.45
31	8'	White	8.40
37	6'8"	Ash Gray	7.00
12	7'	Ash Gray	7.25
10	12'	Ash Gray	12.50
13	14'	Black	14.70

Only a partial list - Call  
4 Color Special: \$1.20-\$1.26 per foot  
White - Red - Green - Brown

265 E. Meadow Valley Rd., Lititz, PA 17543

717-626-9674 • 800-582-9956

717-627-6892 - Fax