

Additional State 4-H Achievement Day Winners

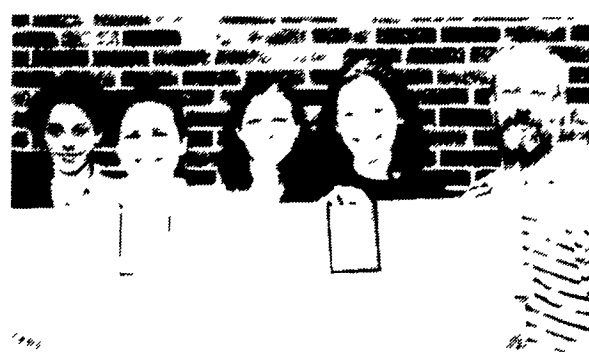
(Continued from Page B16)



Meats judging senior, high place individual, Benjamin Weist, Berks County.



Food and nutrition judging, high individual, Melinda Hill, Columbia County.



Food and nutrition judging, first place team from Columbia County: Jennifer Abraczinskas, Melinda Hill, Leigh Ann Yocum, Deb Lease, and extension agent Chuck Gale.

Build Strong Families

SUMMERDALE (Dauphin Co.) — "Families Making Choices" is the theme for the eighth annual Building Strong Families Conference to be held on Wednesday, October 7, from 8:30 a.m. until 2 p.m. at the Capital Area Intermedicate Unit in Summerdale. The conference is designed to serve as a catalyst for people working with families and include lectures, workshops, networking, and exhibits.

Dr. Donald Murk from Messiah College will present the opening address "Brain Development and How It Influences a Lifetime of Decisions." Dr. Murk will discuss how an infant's brain development during the first few months sets the pattern for decisions later in life.

Keynote speaker for the luncheon is Dr. Brenda Hayes Johnson of Lifespan Associates in Philadelphia. In her address, "Increasing Awareness of Our Anger: A Focus for Constructive Change," Dr. Johnson will review the change process and assist participants in reviewing methods to assist families with constructive changes.

In addition, conference participants can choose from concurrent workshops scheduled throughout the day. Workshops include: Brain Development, Welfare Reform, Women in Transition, Single Mothers Following Separation and Divorce, and Working with Families in Dispute.

The conference is sponsored by Penn State Cooperative Extension, RADAR of Dauphin County, Tri-County Alliance for Youth, and Bethany Children's Home and Counseling Ministries.

Early registration fee is \$30 (\$20 for students). Professional credits are additional \$5 each. Registration deadline is September 30. For more information or to receive a registration packet, contact the Penn State Cooperative Extension office in Dauphin County at (717) 921-8803 or in Cumberland County at (717) 240-6500.

Farmers Union Computer Game Wins Design Award

DENVER, Colo. — *Farm Fun CD*, National Farmers Union's (NFU) educational computer game, has been selected a winner in the 1998 American Graphic Design Awards competition. The award recognizes both NFU and Alpha Dog, Inc., of Delaware, Ohio, the game developer.

A panel of nine judges made the selection in one of the nation's most prestigious competitions. Sponsored by Graphic Design: USA, the 22-year-old contest had some 10,000 entries in 1998. Less than seven percent of all entries were named winners.

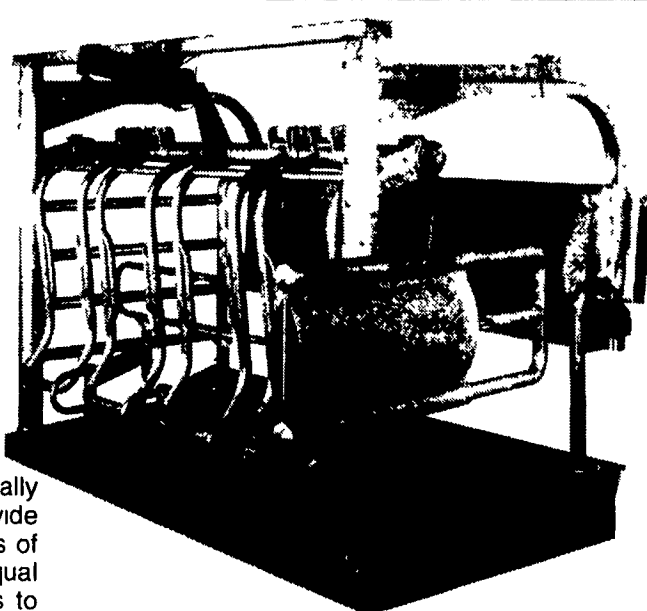
Farm Fun CD, which is aimed at children in kindergarten through third grade, features a win-some foursome of a raccoon, kitten, mouse and frog, which guide players through the game. Players learn about how the foods they eat are raised, processed, packaged and transported. Certain components of the game also are designed to teach children memory and motor skills. The game features original animation and actual video clips of on-farm production and food processing.

The game was developed with funding from Archer Daniels Midland Company in Peoria, Ill., and is currently being sold exclusively through local FFA chapters. For more information on the game, contact Leesa Christensen at 800-347-1961, extension 2527.

National Farmers Union is a general farm organization representing nearly 300,000 family farmers and ranchers nationwide. NFU serves its membership by assisting with education, by providing stimulus and know-how for farmer-owned cooperatives, and by presenting the organizations' policies to lawmakers at the local, state and national levels.

SURGE Magnum 90i

Herringbone Stall



The **MAGNUM SERIES** of parlor stalls are internationally designed, engineered and manufactured to provide maximum longevity with minimal maintenance, regardless of herd size. We at Babson Bros. Co. know, that of equal importance to equipment durability, are four other points to focus on: **Cow Comfort; Cow Positioning; Operator Safety and Throughput Capabilities...**



MOUNTAIN VIEW SUPPLY, INC.
Rd 1, Box 1392
Hamburg, PA
610-488-1025

BRANDT'S FARM SUPPLY
Elizabethtown, PA
1-800-872-7478
717-367-1221

LONGACRE ELECTRICAL SERVICE, INC.
Bally, PA
215-845-2261

HOSTETTER SURGE
Rd 2, Box 749
Annville, PA
717-867-2896

FORSHEY'S, INC.
110 Forshey St
Martinsburg, PA
814-793-3791

JIM'S SURGE SALES & SERVICE
215 Oak Bottom Rd
Quarryville, PA
717-786-1533

No other milking equipment and supply company has more experience, expertise and commitment in its ability to deliver service, knowledge and merchandise.
All of this contributes to the well-being of cows and the profitability of your dairy.