

# 49th SOLANCO Fair Welcomes All

## SOLANCO FAIR HIGHLIGHTS

### September 16

10 a.m. .... Judging Dairy Cattle  
 and various exhibit judging

2 p.m. .... Sheep judging

6:30 p.m. .... Parade

8:30 p.m. .... Tug-Of-War

7 p.m. Tractor square dance

8 p.m. Obstacle course

### September 17

10 a.m. .... Judging dairy cattle

3 p.m. .... Judging swine

7 p.m. .... Judging beef

8:15 p.m. .... Iron Man Contest

### September 18

10 a.m. .... Tractor driving contest  
 .... FFA, 4-H and Open contest

5 p.m. .... Celebrity invitational milking contest

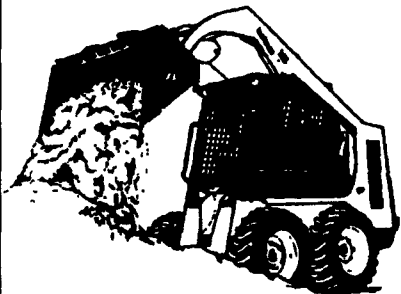
6 p.m. Market livestock sale  
 .... (Youth participation awards will be  
 awarded before steer sale.)

6:30 p.m. .... Peanut and candy scramble



Jessica Schmidt is champion fitter at the Solanco Fair.

**SEE US AT THE FAIRS:**  
**SOLANCO - SEPT. 16, 17, 18**  
**WEST LAMPETER - SEPT. 23, 24, 25**



**BOBCAT**  
**SKID LOADERS**  
 and a variety of Lawn  
 and Garden Equip.

*We'll Be On Hand To  
 Answer Your Questions!*

### GRUMELLI'S FARM SERVICE INC.

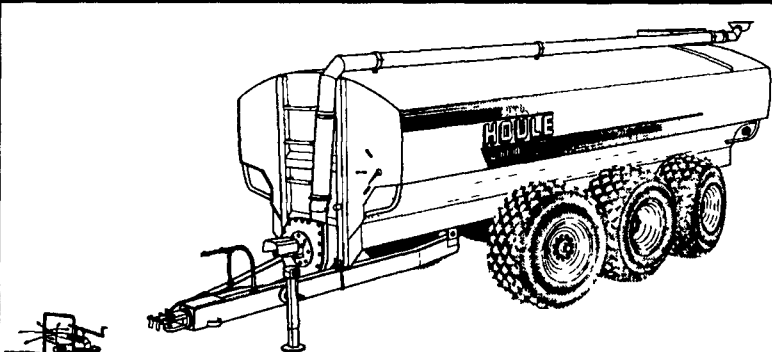
929 ROBERT FULTON HWY.  
 QUARRYVILLE, PA 17566  
**717-786-7318**



bobcat

1.5 Mile South Of Quarryville On 222  
 See Salesmen : Tony Grumelli, Don Fichtner

## YOUR MANURE IS OUR BREAD & BUTTER



**See Us At The  
 SOLANCO  
 AND  
 WEST  
 LAMPETER  
 FAIRS**

### USED/RENTAL LIQUID MANURE EQUIPMENT

#### September Special

1980 Mack R-Model w/3,900 Gal. Tank ..... \$16,000

#### Spreaders

1998 Houle 3850 Gal. Spreader w/23LX26 Tires,  
 Brakes ..... CALL

1978 IH Paystar w/4,500 Gallon Tank ..... \$15,000

Houle 6,000 gal. 28Lx26 tires, brakes and  
 lights ..... \$20,400

(2) Houle 3600 gal w/23.1x26 tires ..... CALL

1992 Houle 4,250 gal., w/ 23.1x26  
 tires ..... \$11,800

1997 Balzer 3,350 vacuum 23.1x26  
 rental ..... \$15,900

1992 Calumet 3750, 1992 w/50x21-20  
 used ..... \$7,000

1997 Houle 4800 Gal. w/28Lx26 Tires, No Brakes, Ex.  
 Cond. .... \$15,500

Butler 3300 Gal. Tank ..... CALL

#### Pumps

Houle 28" Maxi-Pump ..... CALL

1997 Houle 42' Lagoon SUPER PUMP, excellent for  
 thick manure w/sand ..... \$8,150

Houle pto irrigation pumps, rental  
 unit ..... CALL

Houle 42' and 32' Agl Pumps ..... CALL

Butler Lagoon Pump Working Condition ..... \$2,000

2 Cadman 3250 Hard Hose Reels ..... CALL

**See Us For Your Alley Scraper Needs**

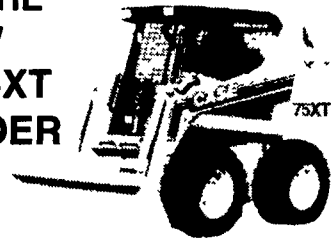
Alley Scrapers • Barn Cleaners • Piston Pumps • Separators • Lagoon and Pit Pumps • Tank Spreaders • Transfer Pumps • Irrigation Pumps • Agitators • Flush Valves • Flush Pumps



Kyle Zerbe of Womelsdorf is the Solanco Fair senior beef showman, and his steer is grand champion.

### Come To The Solanco Fair

**SEE THE  
 NEW  
 CASE 75XT  
 UNI-LOADER**



### FAIR TIME SPECIALS



GEHL 180 Bu. Box  
 Spreader \$4,795

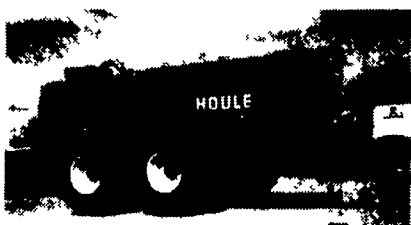


CASE IH Disk Harrows,  
 Cushion Gang 12' or 14'  
 \$6,900



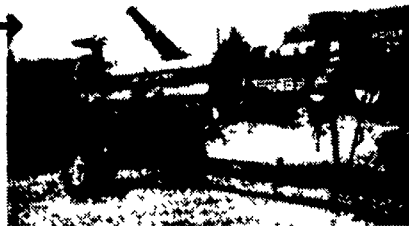
GEHL 6635 80 HP  
 Skid Steer, 2300 lb. Lift,  
 Demonstrator  
 \$25,500

**ALSO...**  
 GEHL 1315 Scavenger  
 \$11,900  
 Gehl 980 Forage Box  
 \$6,900



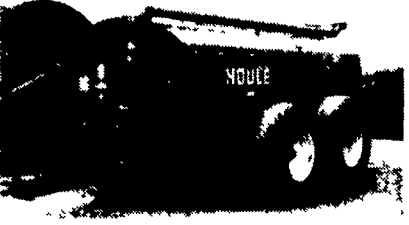
← 1998 Houle  
 4050 Gal.  
 23.1x26  
 Tires,  
 Lights &  
 Brakes, Call

Houle 8'-12'  
 Double  
 Gearbox  
 Pump on  
 Trailer \$4,000



← 1998 Houle  
 3,850 Gal.  
 w/23.1x26  
 Tires, Brakes  
 and Lights.  
 Call.

1992 Houle  
 4,250 gal.  
 w/23.1x26  
 ...\$11,250



Top Volume



Dealer

## Mid-Atlantic AgriSystems

4019 Ashville Rd., Quarryville, Pa. 17566

**800-222-2948**

**717-529-2782**



### A. L. HERR & BRO

Established 1890  
 Park Ave., Quarryville, PA 17566  
 (717) 786-3521

We Ship  
 Parts  
 UPS