

FARM CALENDAR

(Continued from Page A10)

Wacohu Grange Community Show, Wacohu Grange Hall, Huyetts Crossroads, thru Sept. 19.
 Great Frederick Fair, Frederick Fairgrounds, Frederick, thru Sept. 26.
 N.Y. Beef Expo, New York State Fairgrounds, Syracuse, N.Y., thru Sept. 20.
Saturday, September 19
 Phila. Harvest Show, Pa. Horticultural Society Hort Center, Fairmount Park, thru Sept. 20.
 National Eastern Regional Plowing Match, Harlow Smith Farm, Canastota, N.Y., thru Sept. 20.
Sunday, September 20
 Pa. All American, Farm Show Complex, Harrisburg, thru Sept. 24.
 Gratz Fair, Gratz, thru Sept. 26.
 Beaver Community Fair, Beaver

Springs, thru Sept. 26.
 Sheep Skill-a-Thon, Reading Fair, 3 p.m.
Monday, September 21
 Reading Fair, Kutztown Fairgrounds, thru Sept. 27.
Tuesday, September 22
 Pa. Holstein Fall Championship Show, Farm Show Complex, Harrisburg, 9 a.m.
 Harmony Grange Fair, Westover, thru Sept. 26.
 Ephrata Fair, Ephrata, thru Sept. 26.
 Farm Science Review, Ohio State University, Molly Caren Ag Center, near London, thru Sept. 24.
 Food For Profit Seminar, Convention Hall, Pittston, also Sept. 29.
Wednesday, September 23
 15th International Lettuce Conference and Leafy Vegetable Crops Workshop, Atlantic City,

N.J., thru Sept. 26.
 Eastern National Holstein Sale, Farm Show Complex, Harrisburg, 7 p.m.
 West Lampeter Community Fair, Lampeter, thru Sept. 25.
Thursday, September 24
 St. Mary's County Fair, Leonardtown, thru Sept. 27.
 Eastern National Holstein Show, Farm Show Complex, Harrisburg, 8 a.m.
 Eastern National Livestock Show, Maryland State Fairgrounds, Timonium, Md., thru Sept. 27.
 Pumpkin Twilight Meeting, WREC, Queenstown, 4:30 p.m.-7 p.m.
Friday, September 25
 Penn State Alumni Association 2nd Annual Golf Tournament, Toftrees Country Club, State College, tee-off 1 p.m.
Saturday, September 26
 7th Annual Harvest Sheep and Wool Festival, Salem County Fairgrounds, Woodstown, N.J., thru Sept. 27.
 World Beef Expo, Wisconsin State Fairgrounds, Milwaukee.
 Eastern National Livestock Show, Maryland State Fairgrounds, Timonium.
 Capitol Area Beekeepers Association Banquet, Summerdale Fire

Hall, 6 p.m.
 Bloomsburg Fair, Bloomsburg, thru Oct. 3.
 Pa. Avicultural Society Third Annual Tailgate, Lake Tobias, Halifax, 9 a.m.-4 p.m.
 Native American Festival, Indian Steps Museum, Airville, thru Sept. 27.
Sunday, September 27
 Schuylkill County Therapeutic Riding Program Benefit Horse

Show, Schuylkill County Fairgrounds, Summit Station, 9 a.m.
 Adams County Ag Center Campaign Kickoff, site is located off Old Harrisburg Road across from the Adams County National Bank Branch office, 2 p.m.-5 p.m.
 Swine Skill-a-Thon, Berks County Ag Center, 3 p.m.

Average Farm Feed Costs For Handy Reference

To help farmers across the state to have handy reference of commodity input costs in their feeding operations for DHIA record sheets or to develop livestock feed cost data, here's last week's average costs of various ingredients as compiled from regional reports across the state of Pennsylvania. Remember, these are averages, so you will need to adjust your figures up or down according to your location and the quality of your crop.

Corn, No.2y — 2.35 bu., 4.21 cwt.
 Wheat, No. 2 — 2.22 bu., 3.71 cwt.
 Barley, No. 3 — 1.34 bu., 2.87 cwt.
 Oats, No. 2 — 1.28 bu., 3.99 cwt.
 Soybeans, No. 1 — 4.98 bu., 8.32 cwt.
 Ear Corn — 82.82 ton, 4.14 cwt.
 Alfalfa Hay — 110.50 ton, 5.53 cwt.
 Mixed Hay — 115.50 ton, 5.78 cwt.
 Timothy Hay — 113.50 ton, 5.68 cwt.



Continue Building Your Future!

The symbol of excellence since 1903.

Discover "The Distinct Advantage" of Owning a Morton Building!

The family farm and Morton Buildings have been symbols of hard work and dedication for generations. Morton Buildings understands how important your farm is to you. That is why Morton Buildings will provide you with only superior quality materials.

Morton Buildings uses those materials to offer the small farmer a variety of structures to choose from — such as: suburban garages and hobby facilities, machine storage structures, equestrian and livestock facilities, and farm shops. Morton Buildings will create the structure you desire.

You can create a unique building or match the style of your existing structures.

Your local Morton Buildings sales consultant — along with a team of design and construction estimators, engineers, and architects — will work closely with you to design a building that reflects your individual needs. Your new structure will operate efficiently with minimum maintenance year after year. Best of all, your Morton building will be backed by the best warranties in the building business.

Don't wait until your future becomes your past. Choose the company that has been investing in rural America for the past 94 years. Contact your local Morton Buildings construction center today.

800-447-7436
ask for extension 212



MORTON BUILDINGS

P.O. Box 399, Morton, IL 61550
www.mortonbuildings.com
© 1997 Morton Buildings, Inc

CONTACT:

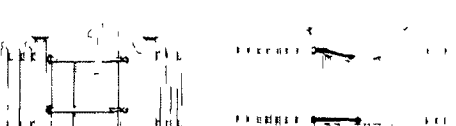
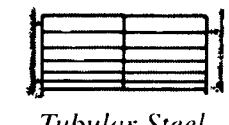
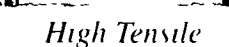
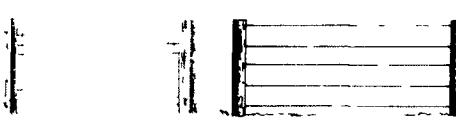
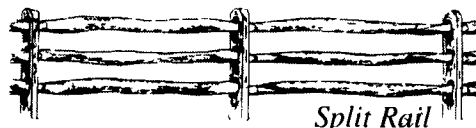
717/624-3331
3368 York Rd.
Gettysburg, PA 17325

908/454-7900
P.O. Box 126,
Phillipsburg, NJ 08865

STOCKTON FENCE & LUMBER

Suppliers of Traditional and Custom Fencing for Farms, Homes, and Estates across America

"The destruction of morality renders the power of the government invalid."
Supreme Court of Pennsylvania
1815 Justice Yeates



For Experienced Information & Free Brochure

1-800-441-5832

P.O. Box 718 • 1297 Kelsall Road • Unionville, PA 19375
(610) 347-1730 Mon - Fri 8 - 4:30 Sat 8 - 12

"Trust in the Lord with all your heart and He will make your path straight" PROVERBS 3:5