

'94 Dodge 1500, HD, 1/2 ton, 3.9 V6 Magnum, 5 spd, PS, PB, AM-FM, 6,400 GVW, new radials, excellent condition, \$8,900. 717-733-2873

'93 Chevy S10 Tahoe extended cab, V6, 5 spd, PS, PB, AM-FM cassette, 39,000 one owner miles, excellent condition, \$7,950. 717-733-2873

WINROSS TRUCKS! Special limited editions, Penna. Quality Eggs Ford Conventional/Tanker or Big Dutchman, cabover/dry van. \$43/ea. postpaid. Mastercard or Visa. 717-393-5807

## LESHER *Mack* SALES & SERVICE

2700 Cumberland Sts.  
(Route 422 West)

Lebanon, Pa.  
17042



1993 Mack MS250  
190 HP, 6 Spd.,  
228" WB, A/C, PS,  
Cab & Chassis,  
Rebuilt Trans with  
New Clutch

### LEASE IT!

1999 Isuzu NPR 14 Ft.  
Supreme Van Body.  
Call For Details  
Ask For Leasing Dept



## NEED A SLEEPER OR DAYCAB?

Sleeper boxes can be removed -  
plenty to choose from  
1994's - 1995's

Nice - Clean Trucks

E7-350 RTLO14610B

10 Spds, DS404 - 3 90R on  
Air Steel Disc Hub Pilot  
295/75R 22.5 192 WB  
42" Highrise 440 000 Miles  
& Under



717-273-4535

## E-TOWN DODGE

'94 Chevy K2500  
Super Cab  
4x4 Silverado

(47) New quad cabs  
available.

(8) Used New Style  
Pickups mostly SLT's

(12) 1998 24 Valve  
New Style Diesel  
Quad & Reg. Cab  
In Stock

'97 Tahoe LT  
w/Leather very nice

(15) Durangos in stock

ASK FOR  
MILTON HESS

Certified Truck Specialist

717-367-6644

717-653-6667

Elizabethtown, PA

## TANDEM AXLE TRACTORS WITH WET LINES



86 Freightliner, 350 Cummins, 8 Spd  
w/o & Lo Lo 38,000 Lb Rears, 12000  
Lb Front 208" WB, Hendrickson  
Suspension - PTO & Wet Line - Jake  
Brake - Cold A/C Lots Of Extras -  
One Owner, Fleet Maintained Ready  
to Roll

\$14,500



'86 Mack R686ST - Mack 350, 9 Spd,  
Mack Spring Suspension 12,000 lb  
Fronts, 38,000 Rears, PTO &  
WETLINE, 206" WB, Clean, Road  
Ready, Fleet Maintained, 1 Owner  
Tractors

\$17,000

Lester R. Summers Trucking

Ephrata, PA

Call David Yerger 717/733-6556

## WE HAVE GAS AND DIESEL NOW!!! Call Keith For Yours!



99 NPR DIESELS

12,000 & 14,500 GVW, Manual or Auto,  
A/C, AM/FM/Cass, Most Wheelbases in  
Stock



(2) 98 ISUZU FTR

25,950 GVW, (1) 6-Spd., (1) Auto,  
A/C, Will Take 24' Body or  
We'll Size To Your Needs



98 & 99 NPR GAS

11050 & 14050 GVW, Auto, A/C,  
AM/FM/Cass, Most Wheel Bases In Stock



99 NQR

Manual; A/C, AM/FM/Cass; 16,500  
GVW. Last One Till Next Shipment



92 MACK CH613

60' Double Bunk, E7350 VMAC, Fuller  
9-spd, Lo Pro 22.5 on Disc (Alum Front),  
Air Ride Nice Truck



89 MACK R688ST

E6350, T2090 Trans., 12FA & 38RA,  
187" WB, Jake, 11R22.5  
on Spokes, A/C, White

Berks, Lebanon & Schuylkill  
Counties **ONLY AUTHORIZED**  
Isuzu Dealer

"0" DOWN LEASE PROGRAM  
CONTINUES THROUGH 12/31/98

ISUZU TRUCK OF READING

READING MACK DIST.

800-485-2556

4226 Pottsville Pike, Reading, PA



## PRE-OWNED CARS

'94 PONTIAC FIREBIRD  
AM/FM Cassette, A/C, Auto,  
Very Sharp Looking Vehicle

'98 LINCOLN MARK VIII  
A/C, A/OC, AM/FM Cass, Fully Loaded  
Luxury Vehicle

'96 FORD CONTOUR GL  
Sdn, A/C, A/OD, AM/FM Cass,  
"3" to Choose From - Must See

'96 LINCOLN TOWN CAR  
Fully Loaded with Luxury,  
"2" to Choose From

'93 MERCURY SABLE GS  
SW  
AC, A/OD, AM/FM A MUST SEE!!!

'96 LINCOLN  
CONTINENTAL  
Fully Loaded Luxury 8 Cyl, Fun to Drive

'95 FORD TAURUS GL SDN  
A/C, A/OD, AM/FM Cass, One Owner,  
Super Clean!!

'95 FORD ESCORT LX SW  
A/C, A/OD, AM/FM, Low Miles

## PRE-OWNED TRUCKS

'89 FORD FC-250 XLT  
8600 GVW, Light Duty 8 Cyl, 5 Spd,  
AM/FM, Super Clean

'96 FORD RANGER XLT  
6 Cyl, Auto, AM/FM Cass,  
One Owner, Priced To Sell

'93 CHEVY S-10 S/C  
A/C 5 Spd, AM/FM Stereo, Super Nice

'94 FORD RANGER S/CAB  
XLT 4x4  
A/C, 5 Spd, AM/FM Cass, Super Nice

'97 FORD F150 4X4  
DIESEL DUMP  
A/OD, Super Nice Truck, A Must See!!!

'97 FORD F-150 S/C XL  
A/C, A/OD, AM/FM,  
One Owner, Very Nice

'95 FORD RANGER XL  
5 Spd, AM/FM, Low Miles

'94 FORD RANGER S/C SPLASH  
4x4, A/C, A/OD, Very Nice, Fun To Drive

## PRE-OWNED MPV'S

'96 CHEVY BLAZER LS  
A/C, Auto, AM/FM Cass,  
Local Trade, Sharp!

'95 FORD WINDSTAR GL  
2-A/C, Auto, AM/FM Cass,  
Super Family Vehicle

'93 FORD EXPLORER SPORT  
A/C, A/OD, AM/FM CASS,  
Must See, Super Clean

'95 FORD BRONCO EB  
AC, Auto, AM/FM Cass,  
Fully Loaded

'97 FORD EXPEDITION XLT  
A/C, A/OD, Fully Loaded,  
One Owner, Super Clean

'95 JEEP WRANGLER  
5 Spd, AM/FM Cass, 4 WD, Hard Top,  
Super Clean, Fun To Drive

'95 JEEP CHEROKEE  
COUNTRY  
A/C, Auto, AM/FM Cass A Must See

'96 MERCURY VILLAGER LS  
A/OD, A/C, AM/FM, Real Family Vehicle

# ENGLE-RISSINGER Auto Group

Midway Between Halifax And Millersburg • 717-896-3421 • 1-800-242-8075

HOURS: Monday-Friday 8:30 AM - 8:30 PM; Saturday 8:30 AM - 3:00 PM

FORD FORD FORD FORD FORD FORD FORD

# KELLER BROS.

(Buffalo Springs) Lebanon, PA

717-949-2000 or 1-800-363-2767

## HEAVY DUTY & LIGHT TRUCK CENTER

END-OF-SEASON  
SPECIAL  
94 MUSTANG GT  
CONVERTIBLE  
Special \$16,735



1997 FORD  
F250  
XL, AT, V8, A/C,  
13,000 Miles



1997 FORD F350  
STAKE BODY  
1999 F450  
STAKE BODY  
IN STOCK



1997 CHEV 2500  
SUPER CAB  
AT, V8, Low Miles,  
White



1995 FORD  
EXPLORER  
SPORT  
4x2, Loaded, Red



1997 NISSAN  
4X4 SUPER CAB  
5 Speed, AC, Cass.,  
9,400 Miles, Bal.  
Factory Warranty, Red



1995 FORD F150  
SUPERCAB XLT  
4x2, AT, V8, Nice Truck



1992 PLYMOUTH  
GAND VOYAGER  
Loaded, 7-Passenger



1999 FORD F550  
DUMP TRUCK  
Power Stroke Diesel,  
4x4, AT, A/C, 12 Ft.  
Dump Box



1998 FORD  
RANGER  
SUPERCAB 4X4  
XLT, 4L, AT, 5,000 Miles



WINDSTARS  
2 - 1996 w/Quad  
Captains Seats  
2 - Used 1998s



1995 FORD F250  
SUPERCAB 4X4  
Power Stroke Diesel,  
XLT Trim, Low Miles



1989 LINCOLN  
TOWN CAR  
Loaded, Leather  
\$6,900



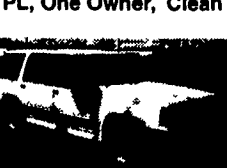
1990 FORD  
BRONCO II  
XLT, 4x4, Just Traded,  
Red & Gray



1996 FORD  
EXPLORER  
XLT, 4x4, Low Miles, 1  
Owner, Just Traded



1994 FORD  
EXPLORER XLT  
4X4, V6, AT, A/C, PW,  
PL, One Owner, Clean



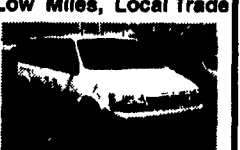
1996 GMC JIMMY  
4-Dr, Black, Loaded,  
SLE, Pkg.  
Alum. Wheels



1993 GMC  
SONOMA  
Super Cab, 4x2, AT  
SLE Pkg, Low Mile



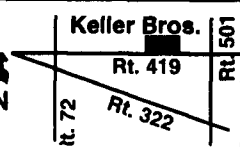
1994 DODGE  
GRAND  
CARAVAN Loaded,  
Low Miles, Local Trade



1994 FORD  
F150  
4x4, XLT, AT, V8



86 F350 DUALY  
XL, Diesel, AT, A/C,  
Very Clean



KELLER BROS. FORD HAS  
SERVED CENTRAL  
PENNA. AREA FOR MORE  
THAN 75 YEARS.

FORD FORD FORD FORD FORD FORD FORD