



SEPTEMBER 7-13, 1998

MOON AT PERIGEE, SEPT. 8.

LABOR DAY

With the Industrial Revolution came working days of up to 16 hours, as capitalism raged. In America, a movement for an 8-hour day caused widespread strikes and violence as early as 1860, and child labor problems became acute after the Civil War. The Fair Labor Standards Act of 1938 marked the beginning of improved labor conditions. The United States, Canada, and Puerto Rico all celebrate the first Monday in September as Labor Day. The tradition began in the United States in 1884, with a day set aside to honor all working people.



In my apron, I carry nails, pliers, a heavy hammer, and pride.

- Moira Bachman

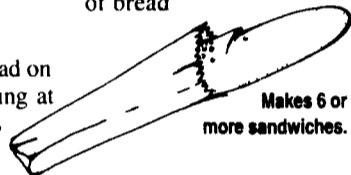
TIP OF THE WEEK

For exercise and a fresh outlook, take a noontime walk during part of your lunch break.

TOMATO, BASIL & MOZZARELLA SANDWICHES

- 1 small loaf French bread (or foccacia)
- 6 tablespoons basil pesto (or substitute olive oil)
- 6 large ripe tomatoes, sliced
- salt and pepper, to taste
- 1 pound fresh mozzarella, thickly sliced
- fresh basil leaves (about 24)

split in half and slice into wedges) Coat one side of each slice of bread with pesto or olive oil. Layer on the tomato slices, season with salt and pepper, add the mozzarella slices and fresh basil leaves, and top with a second piece of bread



Makes 6 or more sandwiches.

Slice the French bread on the diagonal, making at least a dozen slices. (If using foccacia,

www.almanac.com

THE OLD FARMER'S WEATHER PROVERBS



When a cold spell occurs in September and passes without a frost, a frost will not occur until the same time in October.

A wet September, next summer drought.

If your sleep is imperfect and your dreams are of hurrying or are frightful, it may indicate a change in the weather.

Frederick Livestock Auction

Frederick, Md. August 31, 1998

Report Supplied by Auction

SLAUGHTER COWS: 95 HEAD, STEADY SPOTS 1.00 LOWER. UTILITY 35.00-39.00; LOW DRESSING 33.00-35.00; CANNERS 31.00-34.50; SHELLY 30.00 DOWN.

BULLS: 2 HEAD. YG#2 1900-2250 LBS. TO 45.00.

VEAL CALVES: 248 HEAD. GOOD TO LOW CHOICE 200-325 LBS. 55.00-66.00; CULLS 85-110 LBS. 22.00-28.00, FEW TO 32.00, 60-85 LBS. 16.00 DOWN.

FARM CALVES: HOLSTEIN BULLS STEADY TO #1 CALVES. #1 95-120 LBS. 70.00-85.00; 90 LBS. 30.00-50.00; 80-85 LBS. 25.00-30.00; HOLSTEIN HEIFERS #1 90-120 LBS. 150.00-200.00; #2 80-110 LBS. 65.00-130.00; BEEF X BULLS TO 80.00; HEIFERS TO 50.00.

BUTCHER HOGS: 48 HEAD, 4.00-5.00 LOWER. #1&2 230-260 LBS. 31.00; #1&3 230-260 LBS. 30.00; 270-280 LBS. 28.00-30.00; 210-220 LBS. 28.00-29.00.

SOWS: 1 430 LB. AT 18.00. BOARS: 1 235 LB. AT 21.00.

STOCK CATTLE: 14 HEAD. STEERS 400-550 LBS. 61.00-65.00; 1 625 LB. AT 56.50; 1 990 LB. AT 48.00.

HEIFERS: 400-600 LBS. 53.00-59.00. BULLS: 300-400 LBS. 64.00-70.00.

DAIRY REPLACEMENTS: 1 FANCY HOLSTEIN SPRINGER AT 1135.00; SHORTBRED HOLSTEIN COWS SOLD

BY THE LB., 1000-1400 LBS. 53.00-80.00.

LAMBS: CHOICE 55-75 LBS. 69.00-75.00.

GOATS: 1 SMALL AT 20.00.

Westminster Livestock Auction

Hagerstown, Md. September 1, 1998

Report supplied by auction

100 HEAD, 1.00 LOWER ON UTILITY. UTILITY 35.00-38.25; CANNERS 31.00-35.00; SHELLY 30.00 DOWN.

BULLS: 6 HEAD, 1.00 LOWER. HIGH DRESSING YG#1 1600 LBS. 58.50; YG#1 1200-1500 LBS. 45.00-46.00; YG#2 1300-1800 LBS. 41.00-44.00.

FED STEERS: NO BEEF BREEDS. CHOICE HOLSTEINS 1100-1450 LBS. 51.00-52.50; LOW CHOICE 46.00-50.00; SELECT 44.00-46.00.

FED HEIFERS: CHOICE 1100-1200 LBS. 56.00-58.25; LOW CHOICE HOLSTEINS 45.00-46.00.

VEAL CALVES: 151 HEAD. LOW CHOICE 200-300 LBS. 63.00-70.00; CULLS 85-110 LBS. 24.00-28.00; 110-130 LBS. 28.00-33.00; 60-85 LBS. 17.00-26.00.

FARM CALVES: HOLSTEIN BULLS STEADY TO 5.00 LOWER. #1 95-120 LBS. 70.00-89.00; #2 35.00-65.00; 85-95 LBS. 30.00-50.00; HOLSTEIN HEIFERS #1 90-120 LBS. TO 190.00; #2 80-100 LBS. 65.00-80.00; BEEF X BULLS 140 LBS. 79.00-90.00; BEEF X HEIFERS 35.00-75.00.

BUTCHER HOGS: 50 HEAD. #1&2 235-265 LBS. 27.25-27.75; #1&3 220-275 LBS. 25.50-26.75; 280-300 LBS.

24.00-25.00; 320-375 LBS. 15.00-18.00. SOWS: 23 HEAD, 3.00 LOWER. 400-500 LBS. 14.00-15.00; 500-600 LBS. 17.00-19.50.

STOCK CATTLE: 81 HEAD. STEERS MED. ADN LARGE FRAME 200-400 LBS. 76.00; 400-500 LBS. 78.00; 500-750 LBS. 55.00-65.00; 750-950 LBS. 49.00-58.00.

HEIFERS: MED. AND LARGE FRAME 300-500 LBS. 58.00-60.00.

BULLS: MED. AND LARGE FRAME 200-400 LBS. 69.00-77.00, 1 AT 83.00; 400-600 LBS. 57.00-62.00; 600-800 LBS. 50.00-57.00; 2 ANGUS 950 LBS. 50.00-56.50.

SHEEP: 35 HEAD 32.00-45.00.

LAMBS: 60 HEAD. CHOICE 90-110 LBS. 65.00-76.00, 60-90 LBS. 68.00-76.00, FEW 30-50 LBS. 76.00-77.00; 6 YEARLING EWES 168 LBS. AT 45.00.

GOATS: 20 HEAD. 1 LARGE BILLY AT 155.00; 1 AT 100.00; MED. 38.00-60.00; SMALL 20.00-30.00.

PIGS AND SHOATS: 292 HEAD; WEAK DEMAND, PRICES LOWER. BY THE HEAD, 37 HEAD 5-20 LBS. 3.00-10.00; BY THE LB. #1&2 PIGS, 42 HEAD 25-35 LBS. 28.00-40.00; 62 HEAD 38-50 LBS. 28.00-38.00; 42 HEAD 50-60 LBS. 30.00-38.00; 32 HEAD 65-80 LBS. 30.00-38.00; 20 HEAD 80-100 LBS. 30.00-32.00; #2&3 PIGS 32 HEAD 28-63 LBS. 16.00-26.00.

BOARS: 6 HEAD. 400-700 LBS. 10.50, 1 AT 14.25; 1 770 LB. AT 9.75.

NEXT TUES., SEPT. 8, SPECIAL FALL FEEDER CATTLE SALE, APPROX. 7:15 P.M.

EXTENDED PARTS DEPT. HOURS EFFECTIVE SEPT. 1 THRU OCT. 30 To Better Serve You During The Busy Harvest Season

MON. ★ TUES. ★ THURS. ★ FRI. 7:00 AM-8:00 PM
WED. 7:00 AM - 5:00 PM; SAT. 7:00 AM - 12 Noon

BINKLEY-HURST BROS. INC.

Fax 717-626-0996

133 Rothsville Station Rd. P.O. Box 0395, Lititz, PA 17543-0395 (717) 626-4705 1-800-414-4705



United Feature Syndicate

(Printed in the U S A)

200 Madison Ave. N Y , NY 10016 (212-293-8500)



Needed for population this fall through Spring of 99

Hog Finishing Barns 1000-4000 Head Capacity

No experience necessary

We Provide:

- Single source of pigs
- High Health pigs
- Fixed contract payment
- Assistance in obtaining financing
- Successful record in industry
- Long term contracts

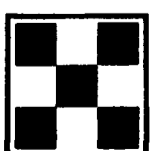
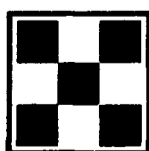
Finishing Barn Ownership Benefits:

- Steady, positive cash flow
- Building equity in facilities
- Excellent Part-time income

Contact

Purina Mills, Inc.

1-800-873-5300



WANTED Hog Fattening Facilities

300 Head Groups Or Less
Lebanon County
(717) 272-9531

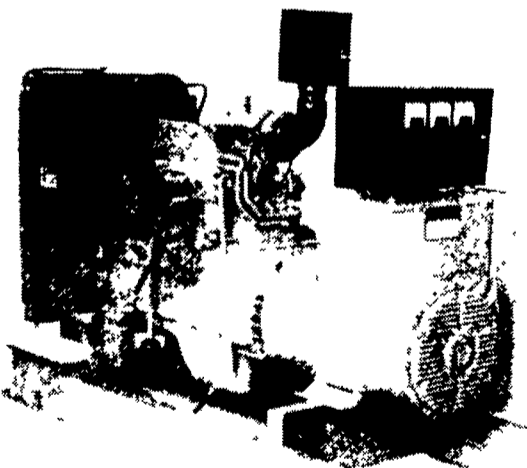
Forney Longenecker
1st Vice President/Financial Consultant
Commodities Only

SMITH BARNEY

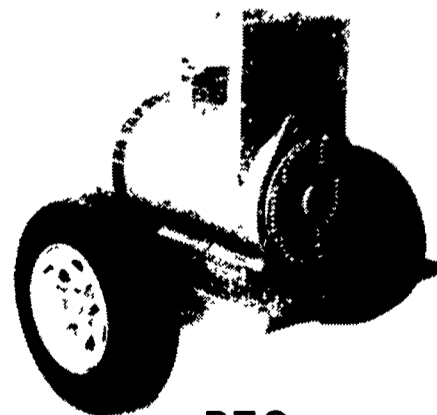
717-295-8914 • 800-441-1997

A Member of TravelersGroup SMITH BARNEY INC
150 North Queen Street
Suite 100
Lancaster, PA 17603

Agricultural Generators



Automatic
L.P. Gas, Diesel, Natural
Gas Generators
5 to 2,000 KW



P.T.O.
Generators
25 to 100 KW

Service - Rental - New - Used

PENN POWER SYSTEMS

Power Generation Systems Specialists

Call Leonard Martin

717-273-4544

Fax 717-273-5186